

11 Appendix E: Climate Figures

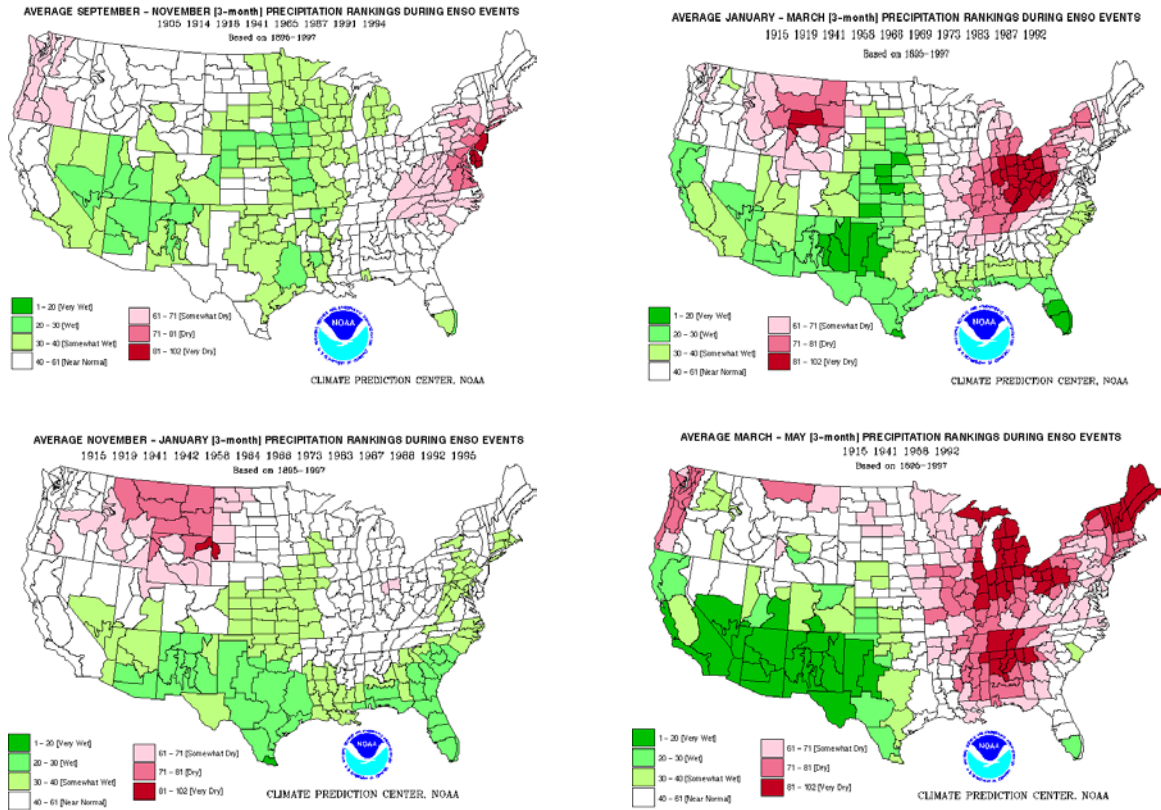


Figure E-3.1: Precipitation rankings for strong ENSO events using mean precipitation for four different time periods (NOAA, CPC)

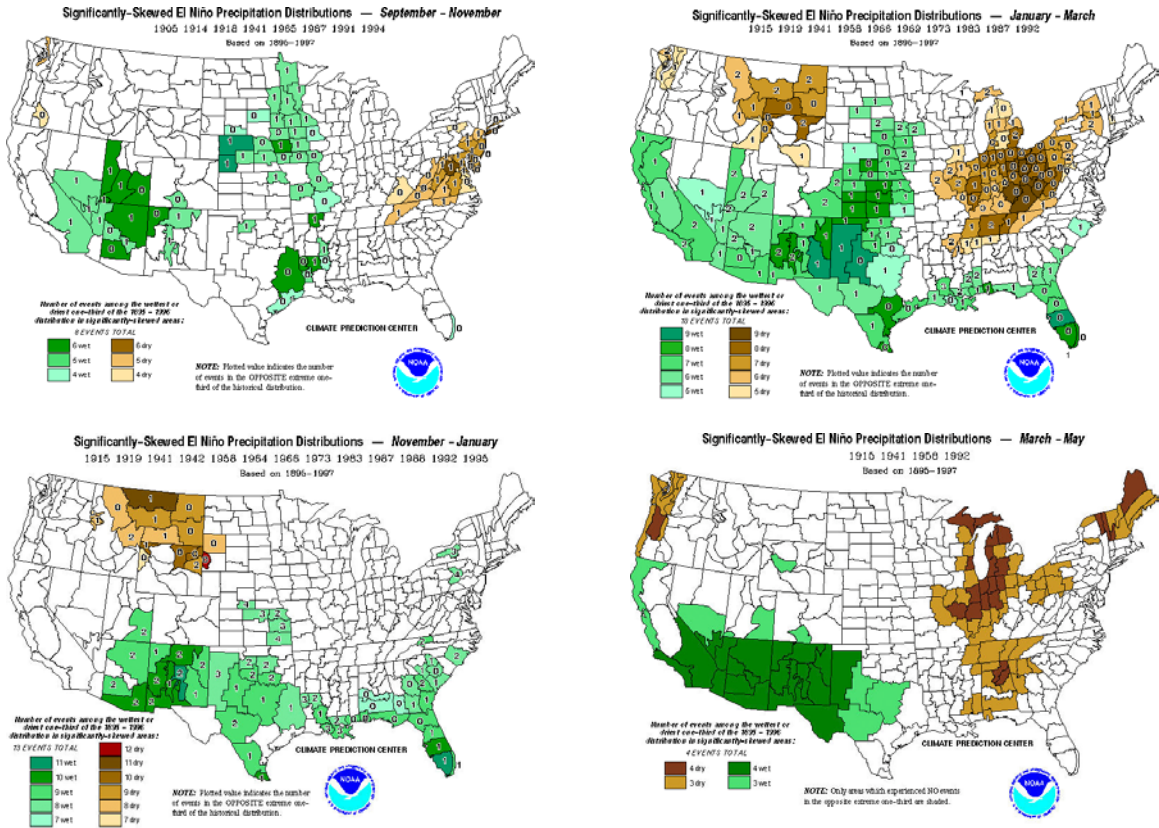
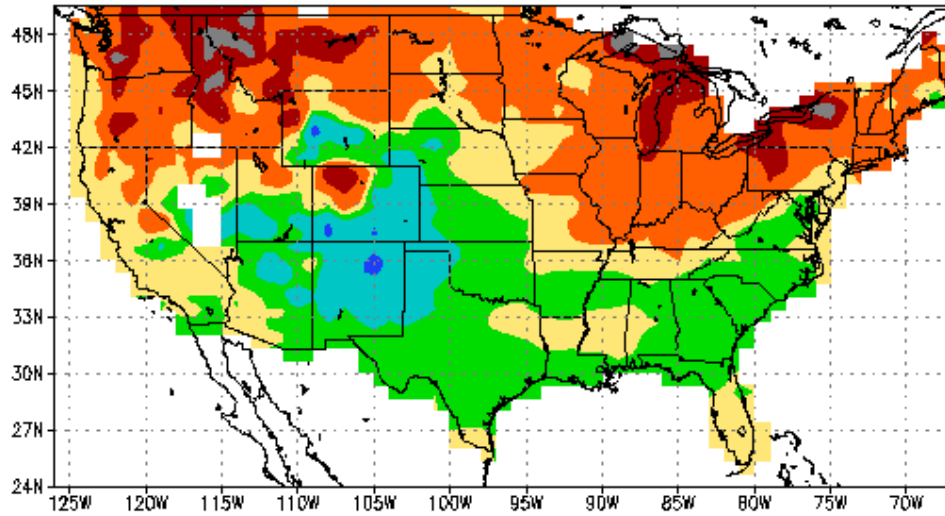


Figure E-3.2: Number of times that the mean precipitation for strong ENSO events ranked among the wettest or driest third of the record using four different time periods (NOAA, CPC).

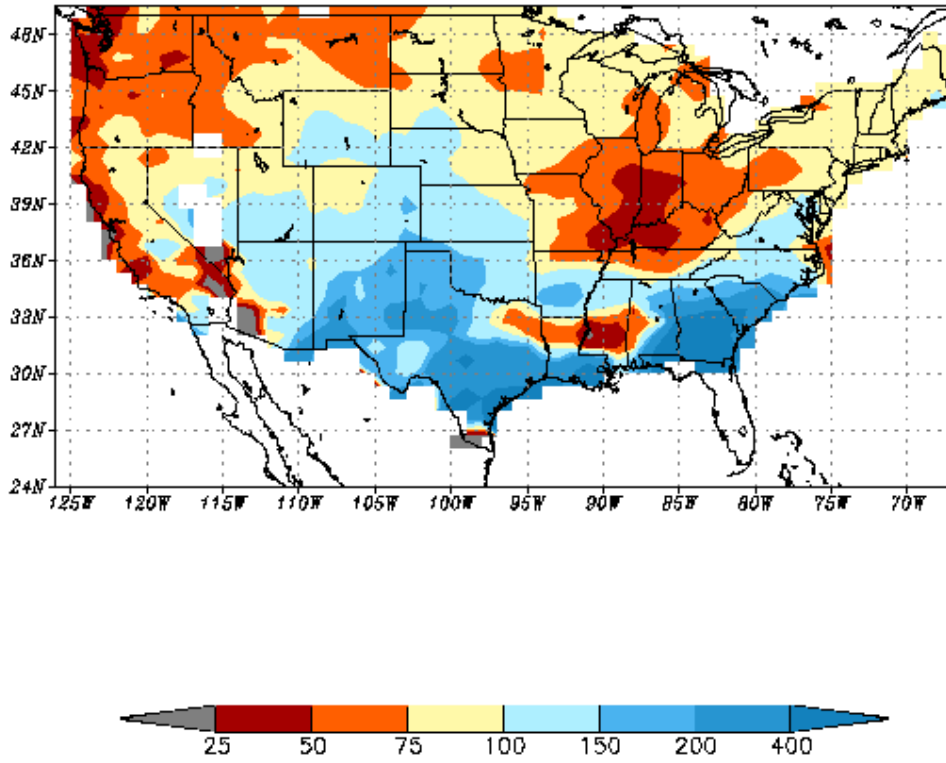
Snowfall(inches)
El Nino Winters minus All Others
Period 1951-1997



*Midwestern Climate Center
Illinois State Water Survey*

Figure E-3.3: Annual Snowfall: average of 8 El Niño winters minus average of all other winters during 1951-1997 (Midwestern Climate Center).

Snowfall Ratio(%)
El Nino Winters/All Other Winters
Period 1951-1997



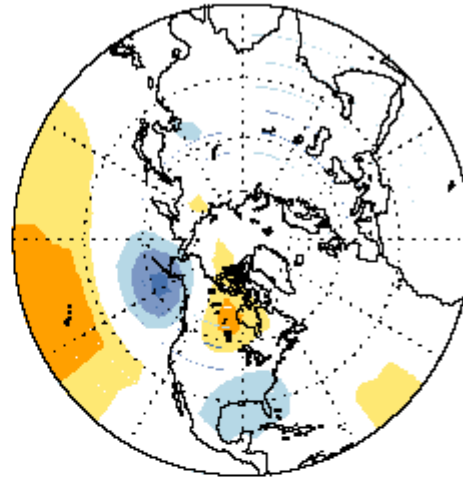
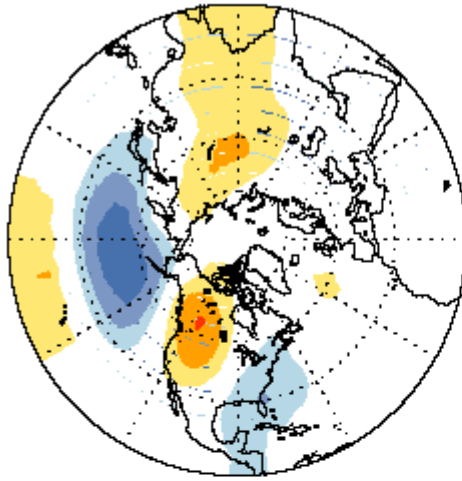
*Midwestern Climate Center
Illinois State Water Survey*

Figure E-3.4: Annual Snowfall: ratio of 8 El Niño winters to all other winters during 1951-1997 (Midwestern Climate Center).

PACIFIC/NORTH AMERICAN PATTERN (PNA)

January

April



October

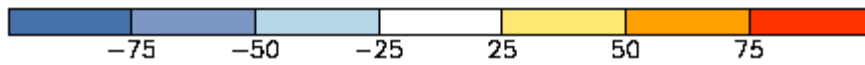
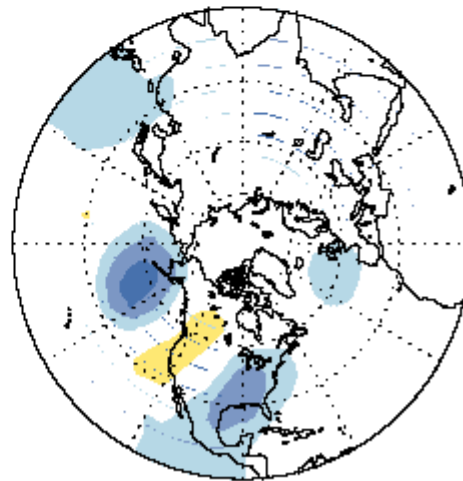


Figure E-3.5: The Pacific/North American pattern in its positive phase (Climate Prediction Center, NOAA)

TROPICAL/ NORTHERN HEMISPHERE PATTERN

January

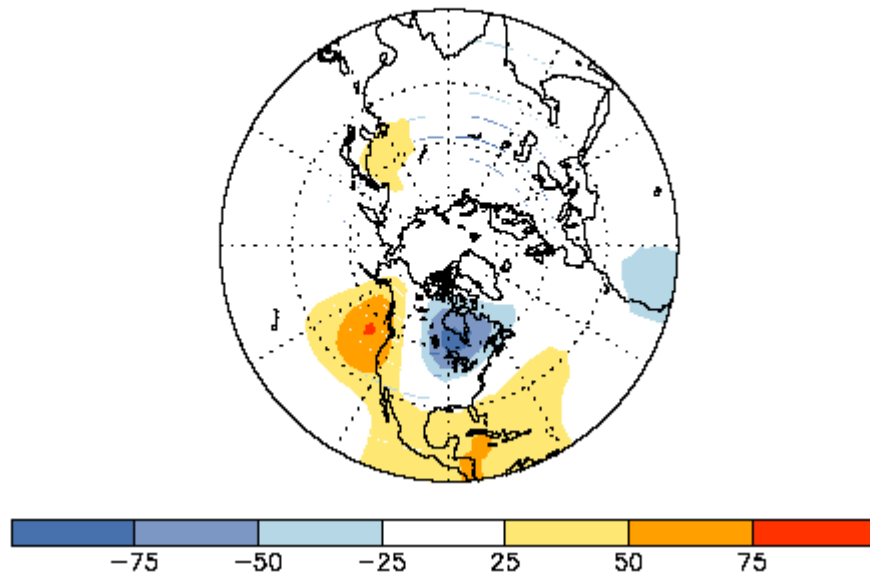


Figure E-3.6: The Tropical/Northern Hemisphere pattern in its positive phase (Climate Prediction Center, NOAA)

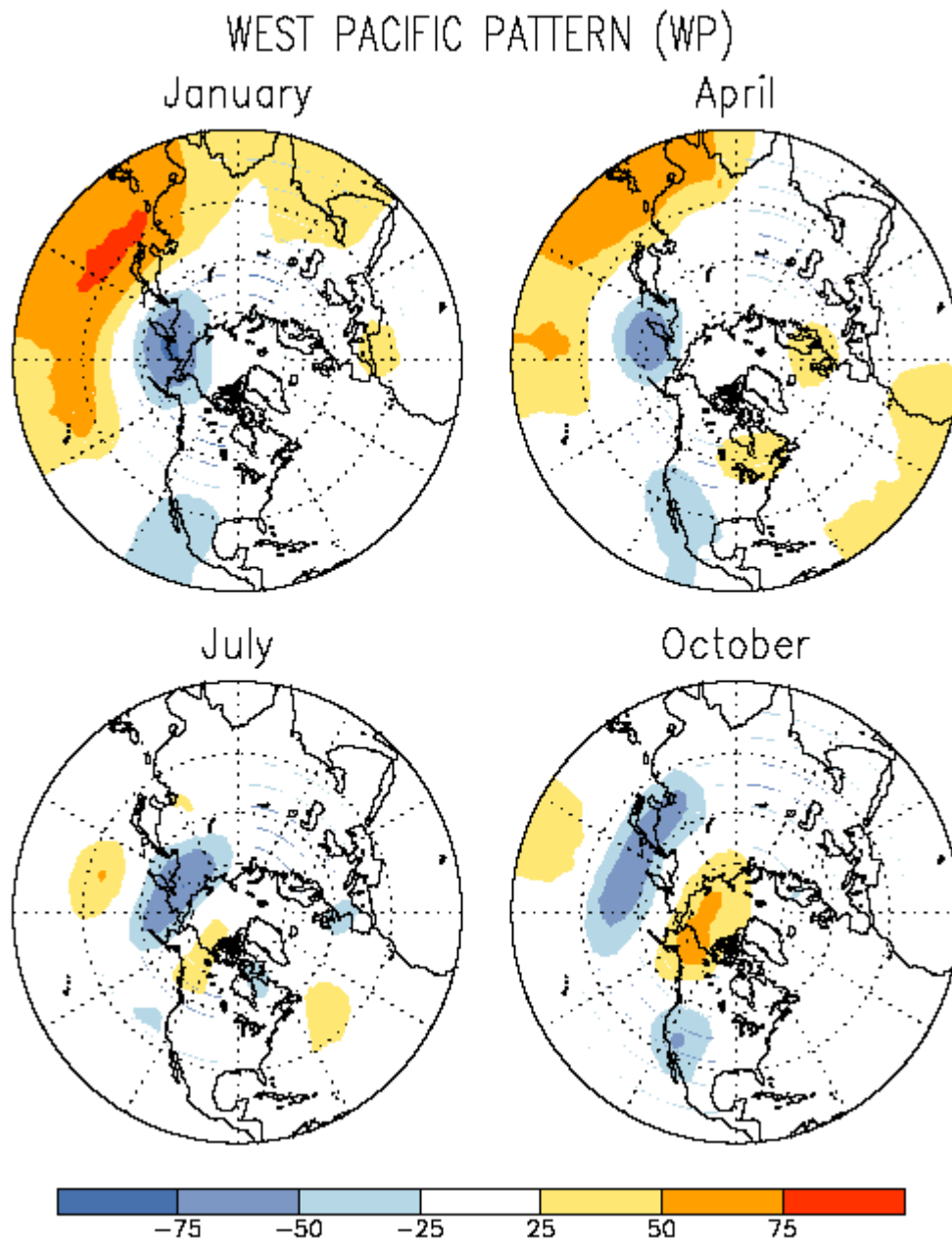


Figure E-3.7: The West Pacific pattern in its positive phase (Climate Prediction Center, NOAA)

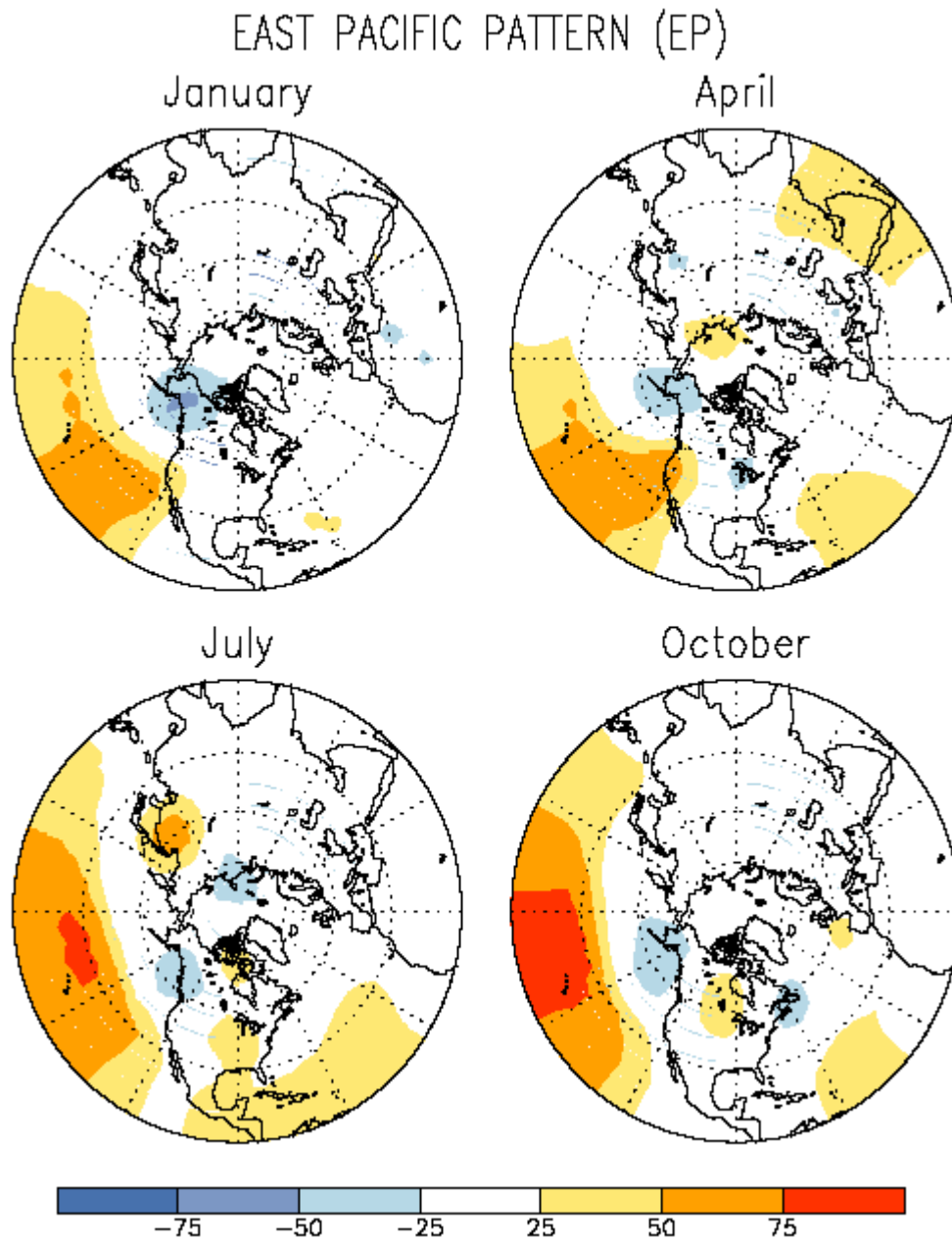


Figure E-3.8: The East Pacific pattern in its positive phase (Climate Prediction Center, NOAA)

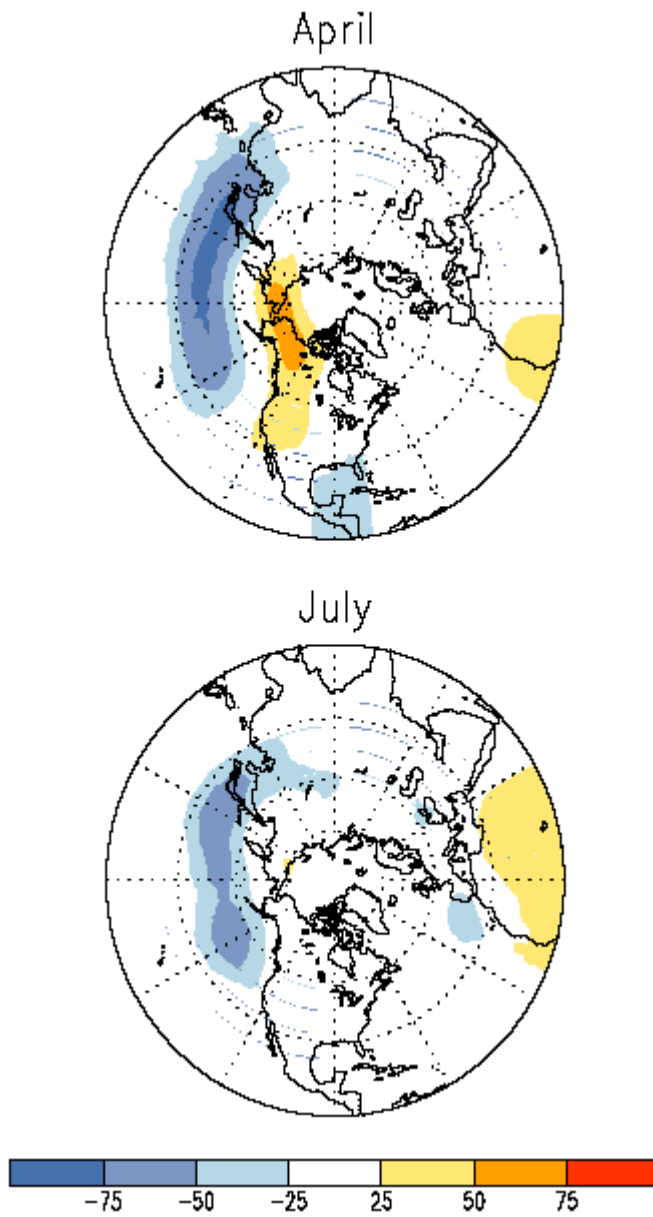


Figure E-3.9: The North Pacific pattern in its positive phase (Climate Prediction Center, NOAA)

PACIFIC TRANSITION PATTERN
July

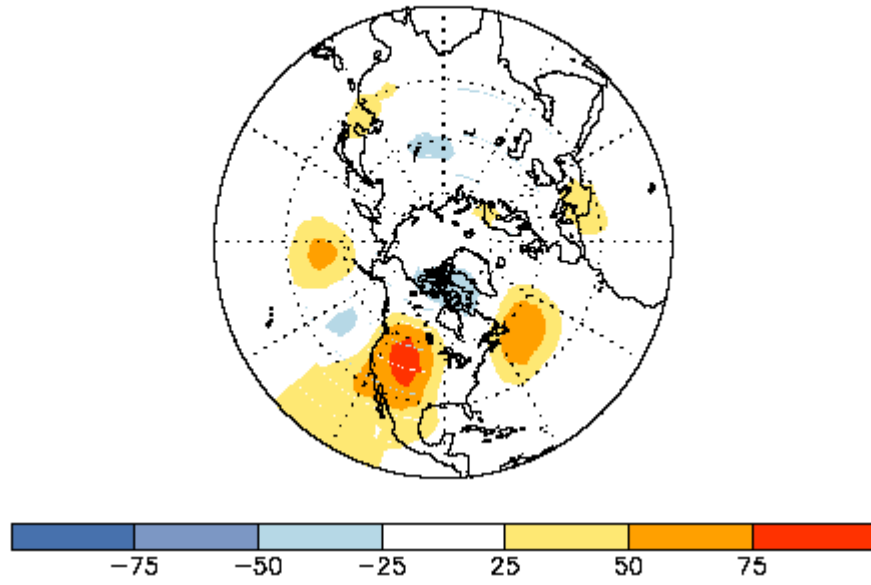


Figure E-3.10: The Pacific Transition pattern in its positive phase (Climate Prediction Center, NOAA)

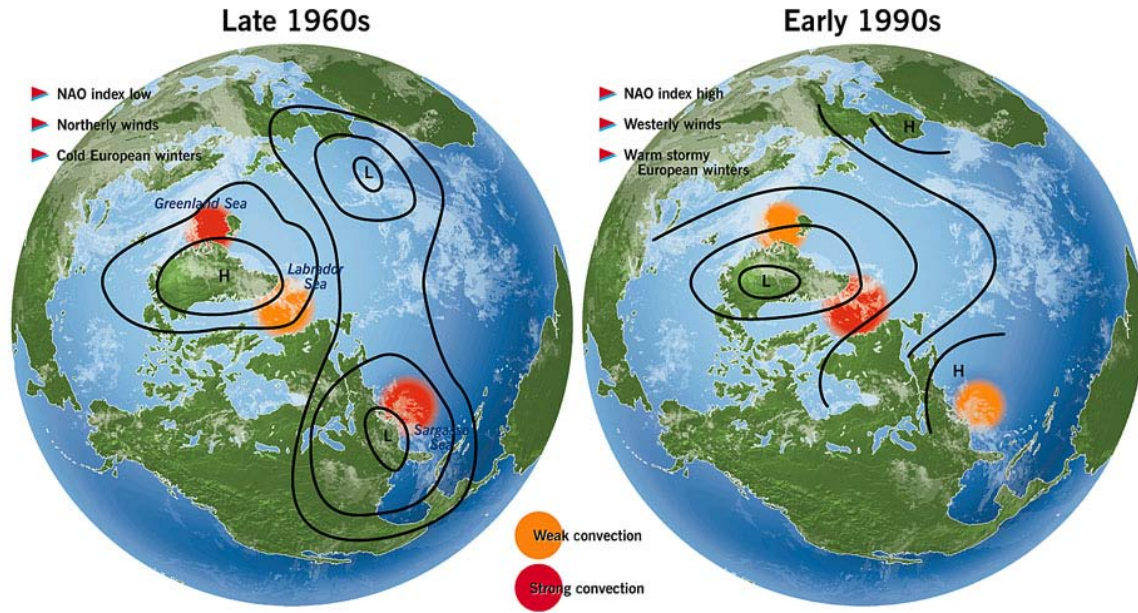


Figure E-3.11: The North Atlantic Oscillation negative phase (left) and positive phase (right) (New Scientist, 1998).