



# Lake Red Rock Project

## MASTER PLAN

---

### APPENDIX H

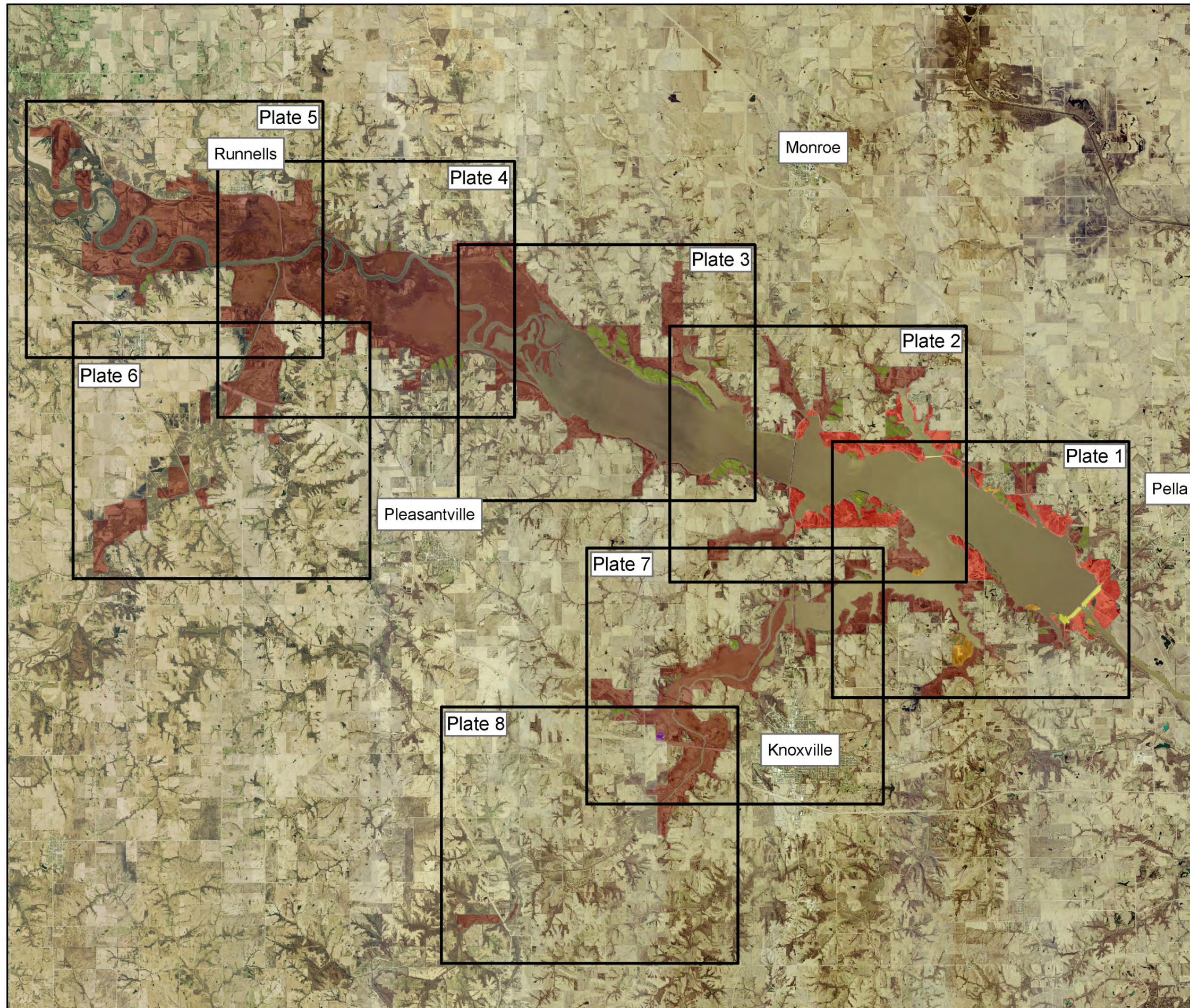
#### Maps

---

#### CONTENTS:

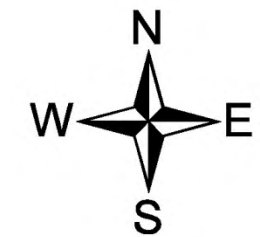
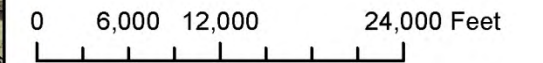
1. Land Classification Overview Map
2. Land Classification – Plate 1
3. Land Classification – Plate 2
4. Land Classification – Plate 3
5. Land Classification – Plate 4
6. Land Classification – Plate 5
7. Land Classification – Plate 6
8. Land Classification – Plate 7
9. Land Classification – Plate 8
10. Resource Management Units and ESAs
11. Managing Agency Overview Map





**Legend**

- High Density Recreation
- Mult. Resource - Low Density Recreation
- Mult. Resource - Wildlife Management
- Mult. Resource - Future Recreation Area
- Project Operations
- Environmentally Sensitive Area



2009 Aerial Imagery

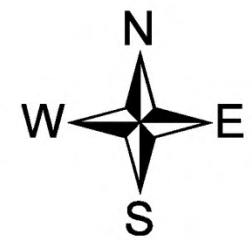
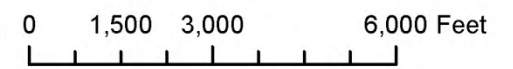
**LAND CLASSIFICATION  
OVERVIEW**





**Legend**

- High Density Recreation
- Mult. Resource - Low Density Recreation
- Mult. Resource - Wildlife Management
- Mult. Resource - Future Recreation Area
- Project Operations
- Environmentally Sensitive Area



2009 Aerial Imagery

**LAND CLASSIFICATION**  
**PLATE 1**





US Army Corps  
of Engineers  
Rock Island District

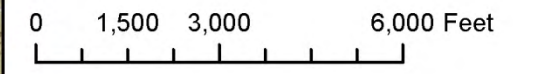
APPENDIX H  
MAPS

Red Rock  
Project  
Master Plan  
2015



**Legend**

- High Density Recreation
- Mult. Resource - Low Density Recreation
- Mult. Resource - Wildlife Management
- Mult. Resource - Future Recreation Area
- Project Operations
- Environmentally Sensitive Area



2009 Aerial Imagery

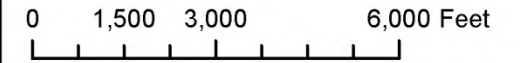
**LAND CLASSIFICATION  
PLATE 2**





**Legend**

- High Density Recreation
- Mult. Resource - Low Density Recreation
- Mult. Resource - Wildlife Management
- Mult. Resource - Future Recreation Area
- Project Operations
- Environmentally Sensitive Area



2009 Aerial Imagery

**LAND CLASSIFICATION  
PLATE 3**

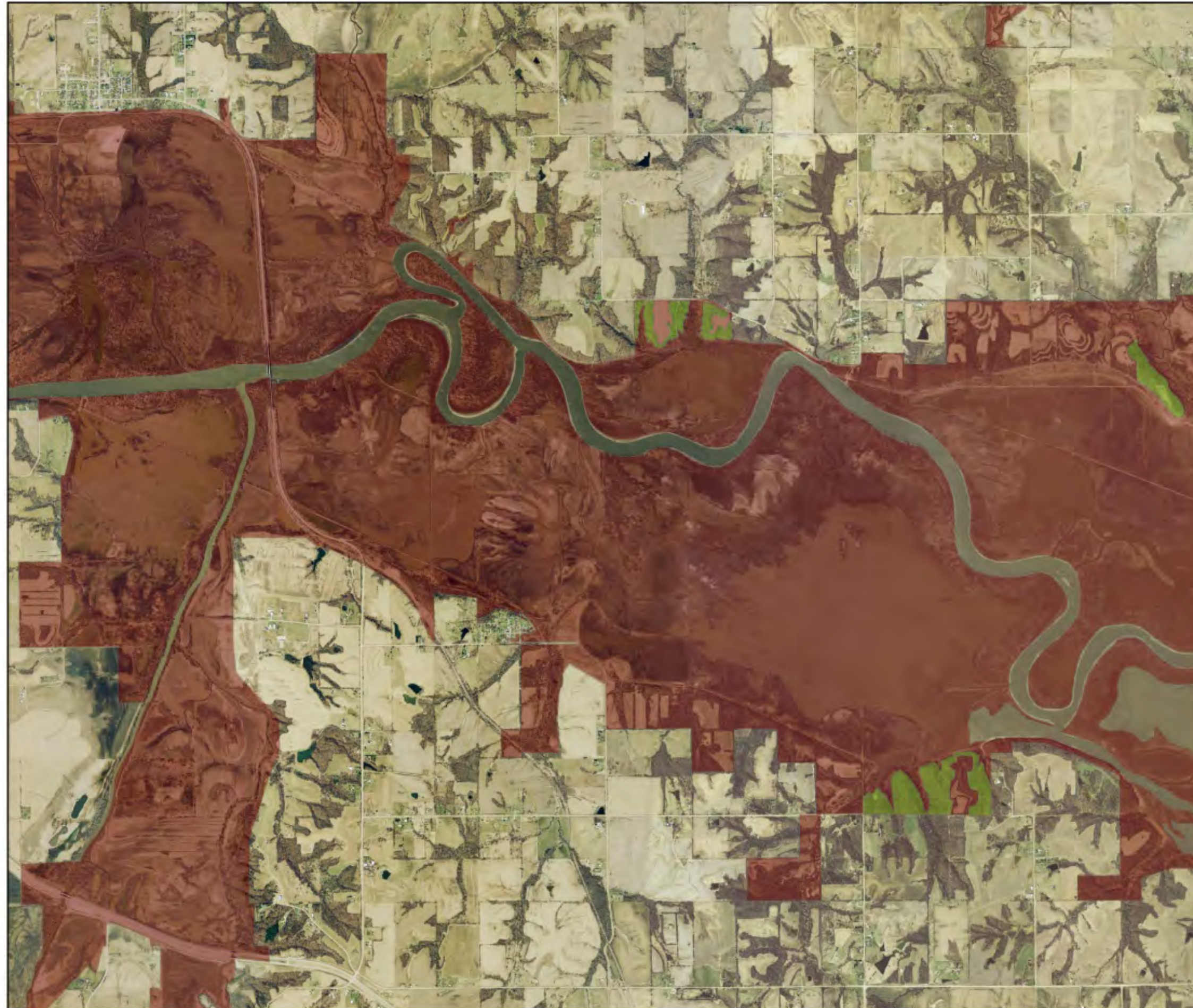




US Army Corps  
of Engineers  
Rock Island District

APPENDIX H  
MAPS

Red Rock  
Project  
Master Plan  
2015



**Legend**

- High Density Recreation
- Mult. Resource - Low Density Recreation
- Mult. Resource - Wildlife Management
- Mult. Resource - Future Recreation Area
- Project Operations
- Environmentally Sensitive Area

0 1,500 3,000 6,000 Feet



2009 Aerial Imagery

**LAND CLASSIFICATION**

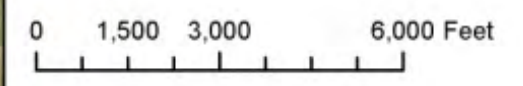
**PLATE 4**





**Legend**

- High Density Recreation
- Mult. Resource - Low Density Recreation
- Mult. Resource - Wildlife Management
- Mult. Resource - Future Recreation Area
- Project Operations
- Environmentally Sensitive Area



2009 Aerial Imagery

**LAND CLASSIFICATION  
PLATE 5**

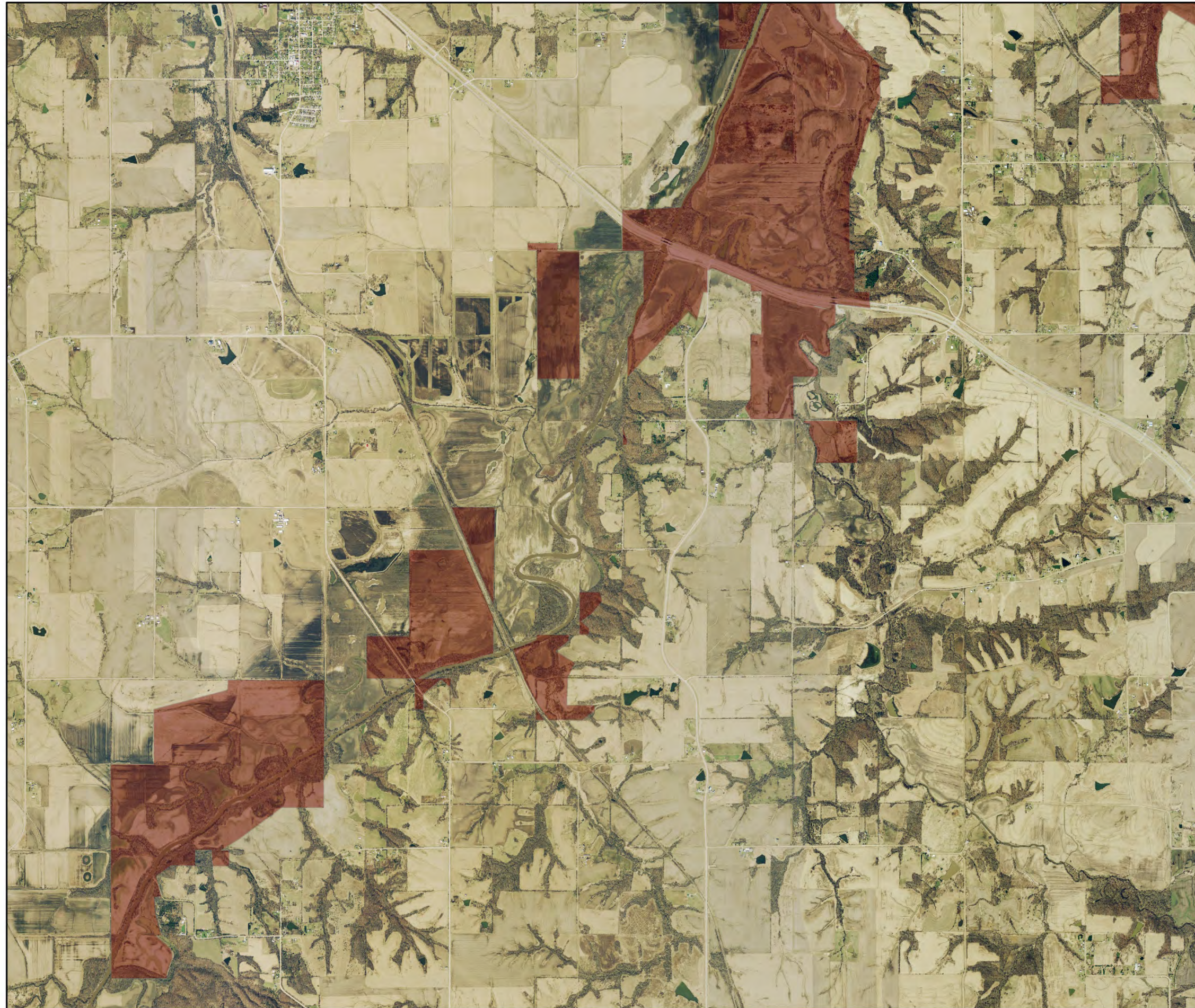




US Army Corps  
of Engineers  
Rock Island District

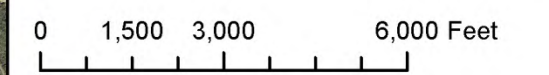
APPENDIX H  
MAPS

Red Rock  
Project  
Master Plan  
2015



**Legend**

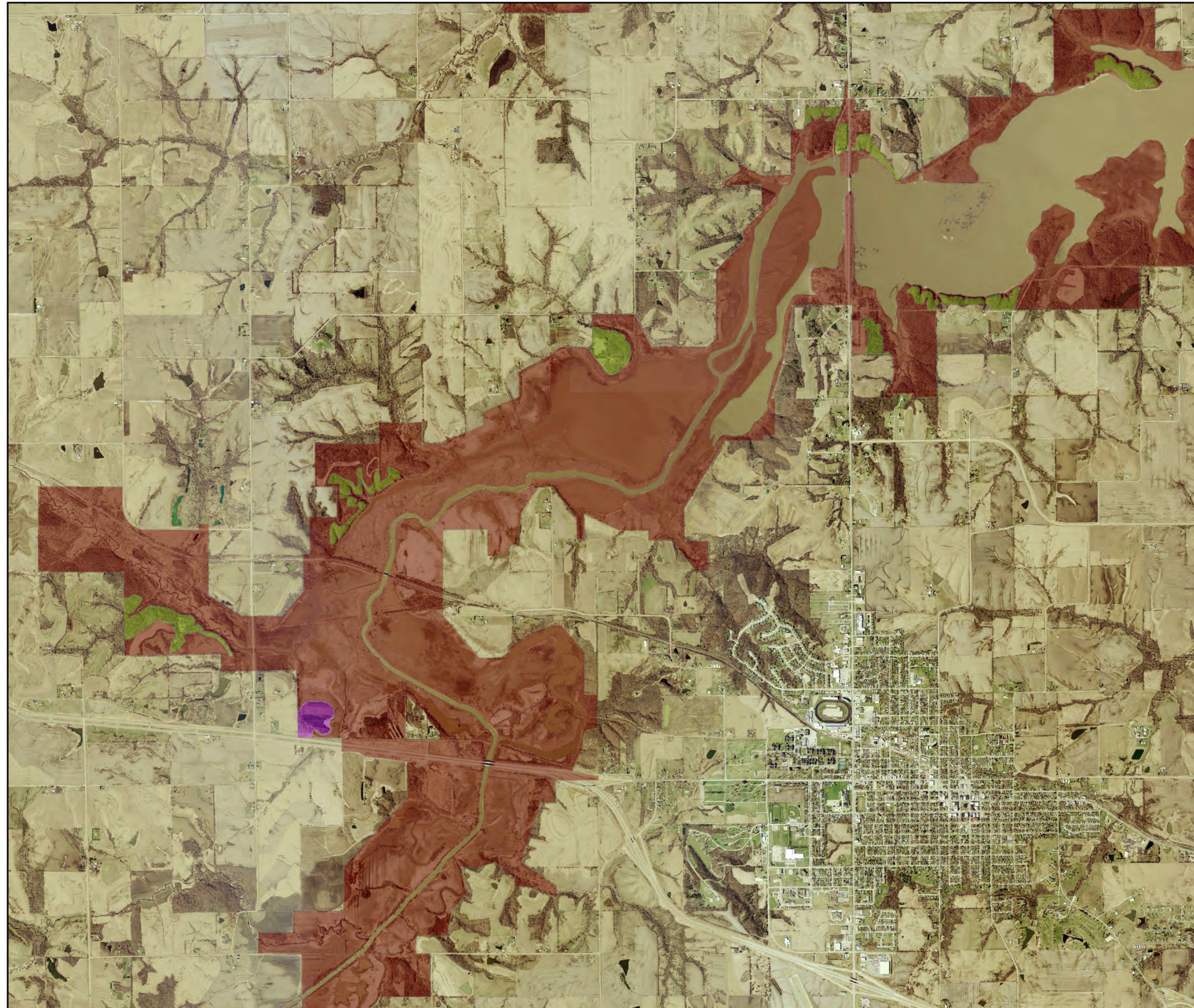
- High Density Recreation
- Mult. Resource - Low Density Recreation
- Mult. Resource - Wildlife Management
- Mult. Resource - Future Recreation Area
- Project Operations
- Environmentally Sensitive Area



2009 Aerial Imagery

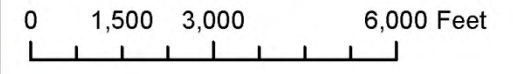
**LAND CLASSIFICATION**  
**PLATE 6**





**Legend**

- High Density Recreation
- Mult. Resource - Low Density Recreation
- Mult. Resource - Wildlife Management
- Mult. Resource - Future Recreation Area
- Project Operations
- Environmentally Sensitive Area



2009 Aerial Imagery

**LAND CLASSIFICATION  
PLATE 7**





US Army Corps  
of Engineers  
Rock Island District

APPENDIX H  
MAPS

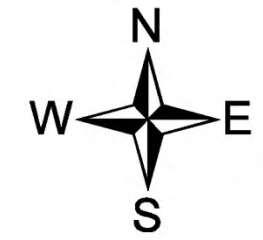
Red Rock  
Project  
Master Plan  
2015



**Legend**

- High Density Recreation
- Mult. Resource - Low Density Recreation
- Mult. Resource - Wildlife Management
- Mult. Resource - Future Recreation Area
- Project Operations
- Environmentally Sensitive Area

0 1,500 3,000 6,000 Feet

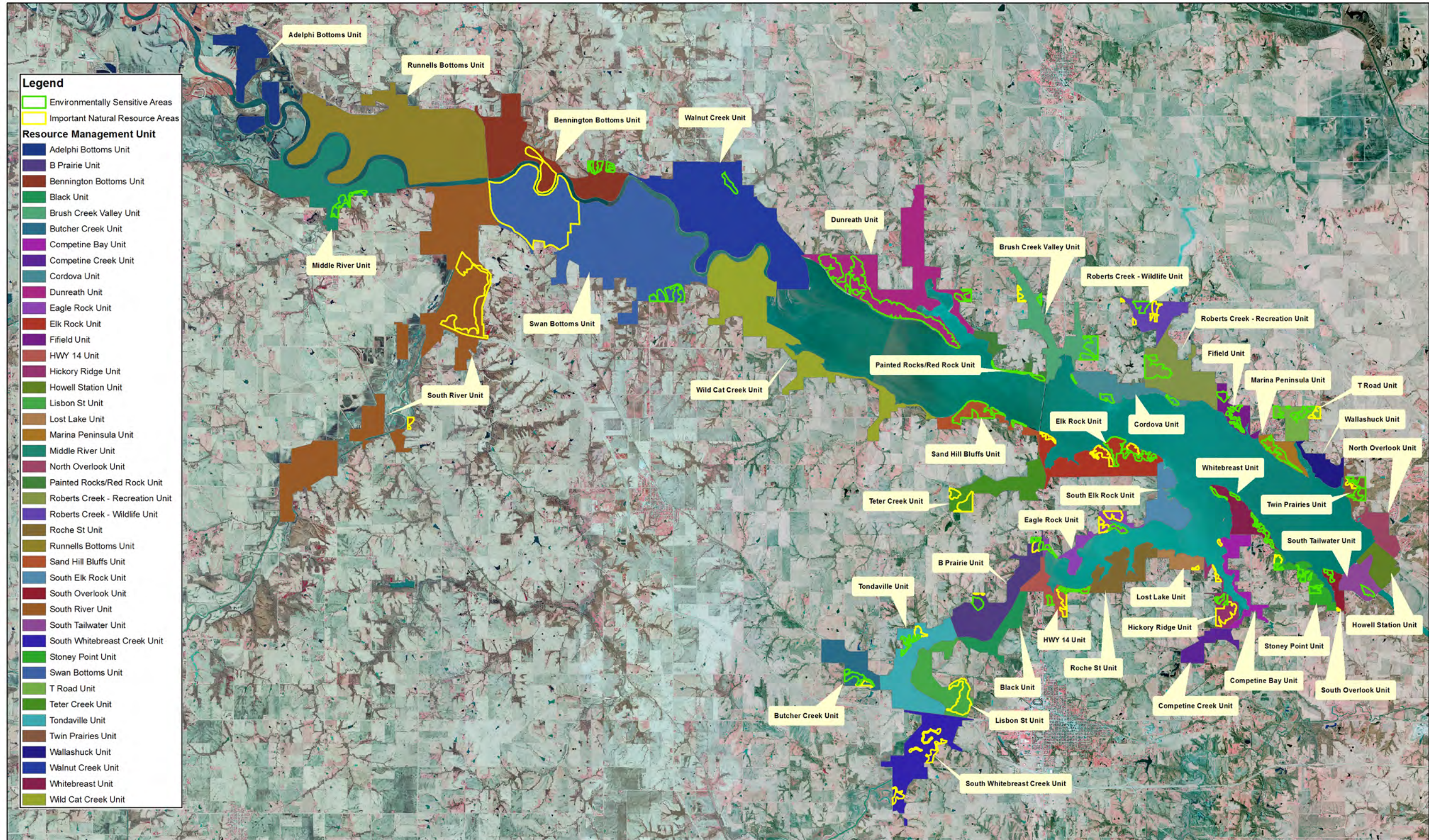


2009 Aerial Imagery

**LAND CLASSIFICATION**

**PLATE 8**





Resource Management Units and Environmentally Sensitive Areas (ESAs)  
Lake Red Rock Project, 2009 Color Infrared Airphotos

March 2015

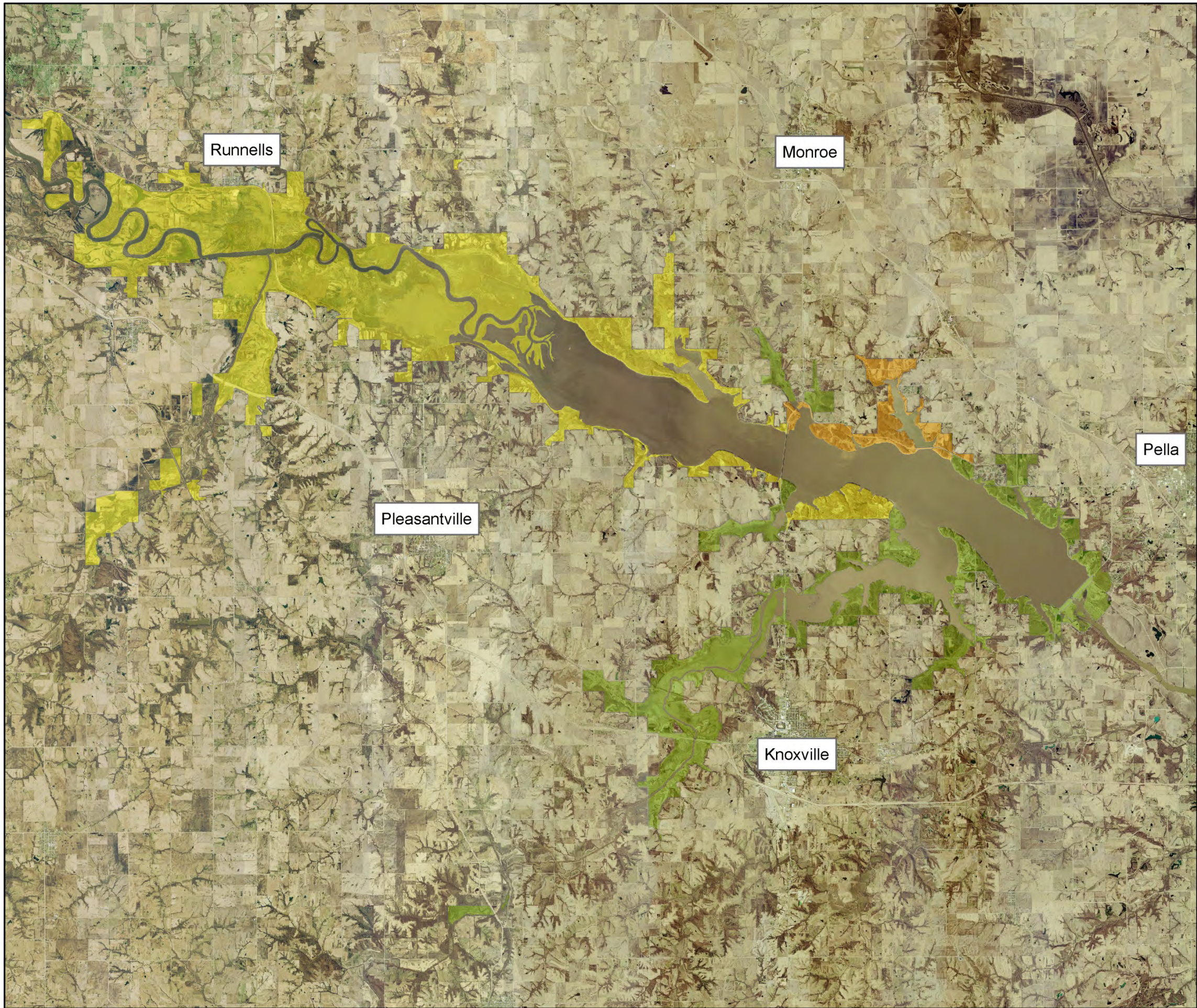






US Army Corps of Engineers  
Rock Island District

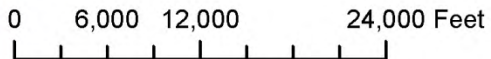
APPENDIX H  
MAPS



**Legend**

**Managing Agency**

- Iowa Department of Natural Resources
- Marion County Conservation Board
- US Army Corps of Engineers



2009 Aerial Imagery

**MANAGING AGENCIES**

**OVERVIEW**

Red Rock Project

Master Plan 2015