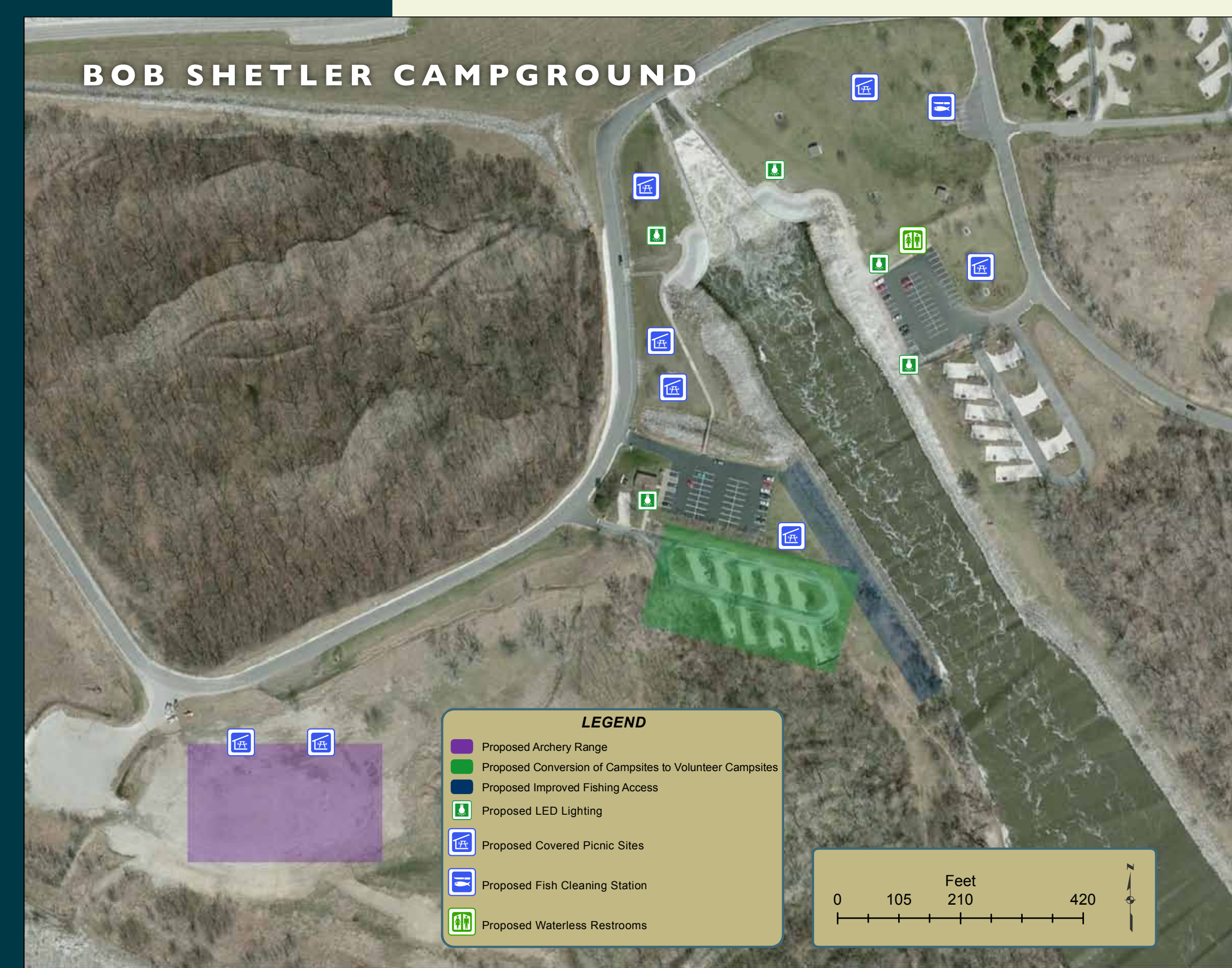
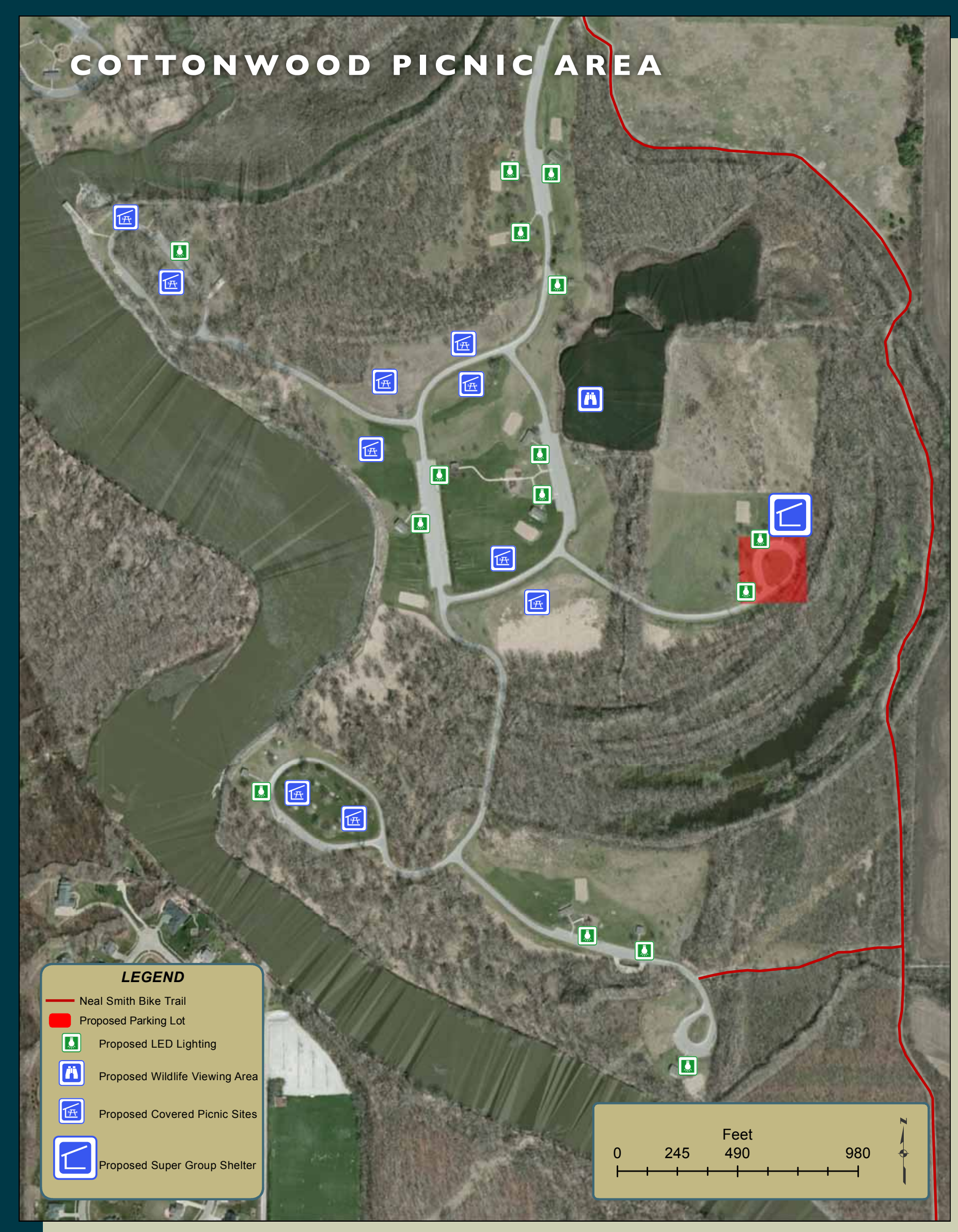


## COTTONWOOD & BOB SHETLER PICNIC AREA

With these two different picnic areas to choose from, Saylorville Lake offers a wide variety of outdoor recreation opportunities. Outdoor recreation provides physical, emotional and social benefits to individuals by keeping them healthy, reducing stress and re-energizing the body and mind, and bringing friends and families together. The various recreation activities provide an opportunity for a variety of social events at Saylorville Lake.

Both picnic areas have fishing access, wildlife viewing, restrooms, water & playgrounds. Each shelter has volleyball uprights, a fireplace, group grill, lighting, electric outlets and picnic tables. All shelters can be reserved for a fee, but are also available on a first come first serve basis for no charge.



Cottonwood and Bob Shetler Picnic Areas are both highly used areas along Saylorville Lake outlet and the Des Moines River. These proposed improvements will bring new opportunities and a higher level of quality service for the public.

### BOB SHETLER PICNIC AREA IMPROVEMENTS

- Archery range
- Install new vault toilets
- Small single family picnic shelters
- Install efficient LED lighting
- Fishing pier in pond area
- New fish cleaning station
- Improve boat ramp and parking lot
- Improve fishing access on the outlet channel
- Municipal sewer connection

### COTTONWOOD PICNIC AREA IMPROVEMENTS

- Addition of new larger group shelter and parking lot
- Small single family picnic shelters
- Roadside parking lots
- Efficient LED lighting
- Wildlife view stand near pond area
- Municipal sewer connection