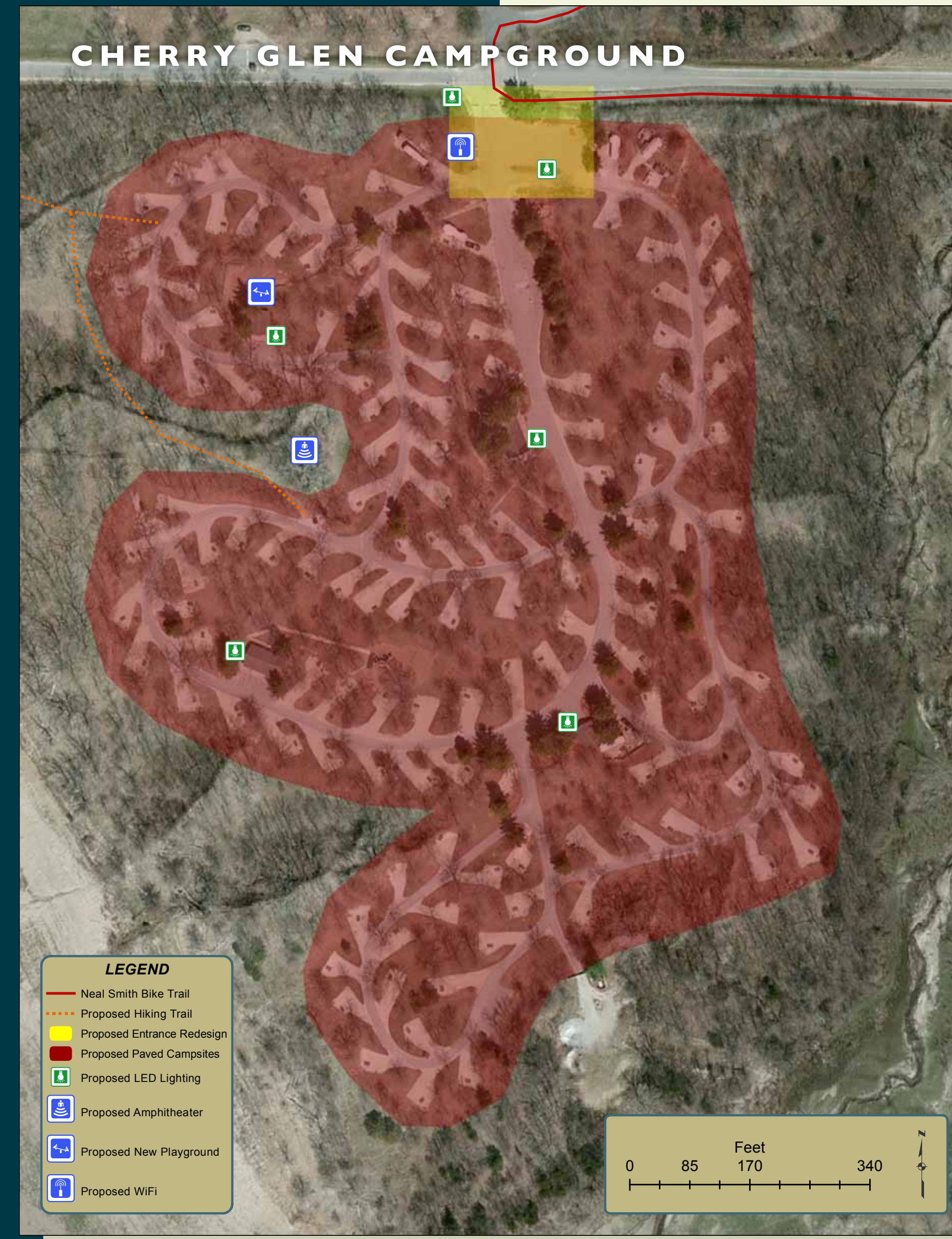


CHERRY GLEN & PRAIRIE FLOWER CAMPGROUNDS

With these two different campgrounds to choose from, Saylorville Lake offers a wide variety of outdoor recreation opportunities. These campgrounds host a variety of scenery ranging from upland hardwoods in Cherry Glen to planted prairie in Prairie Flower Campground.

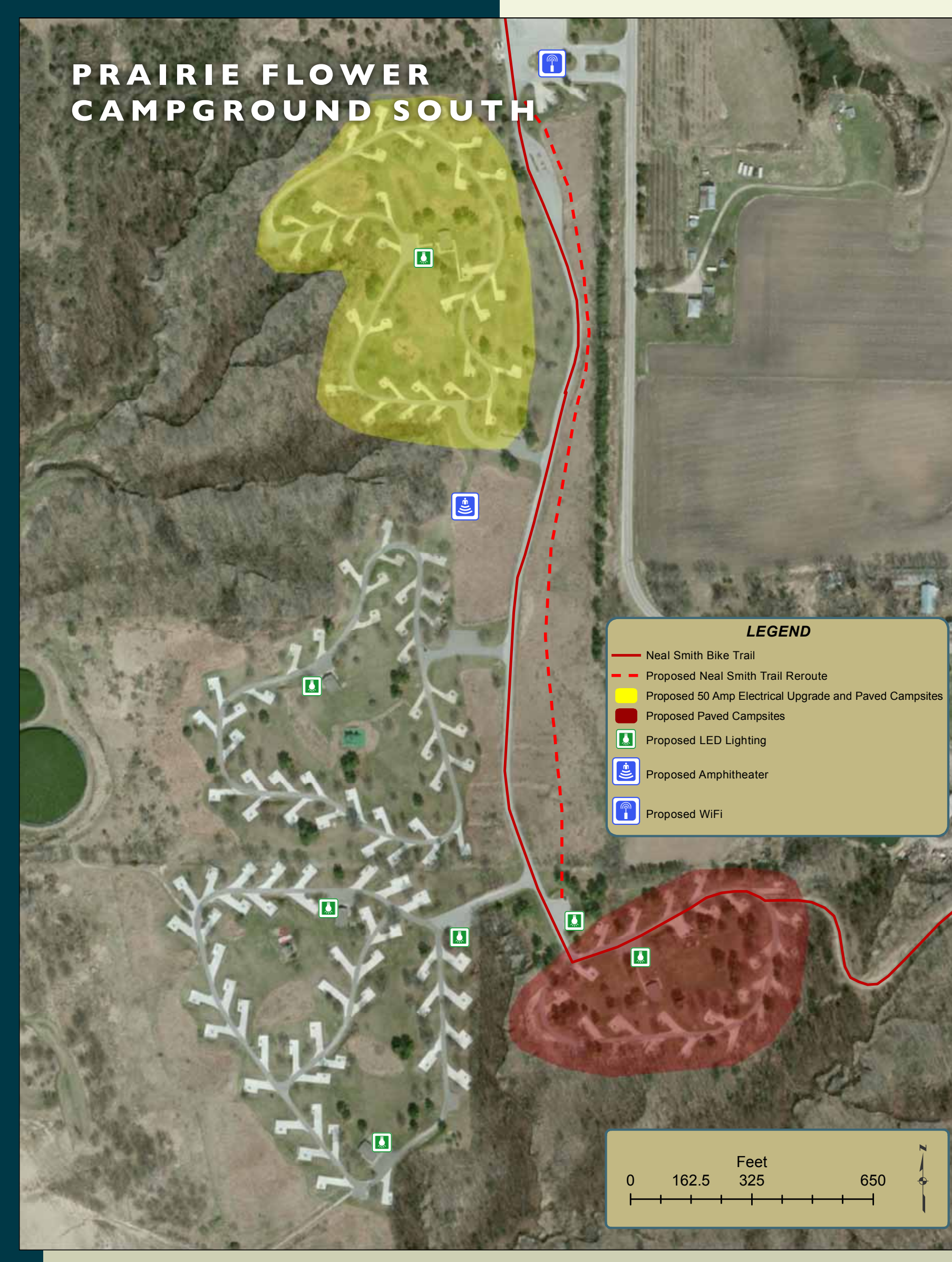
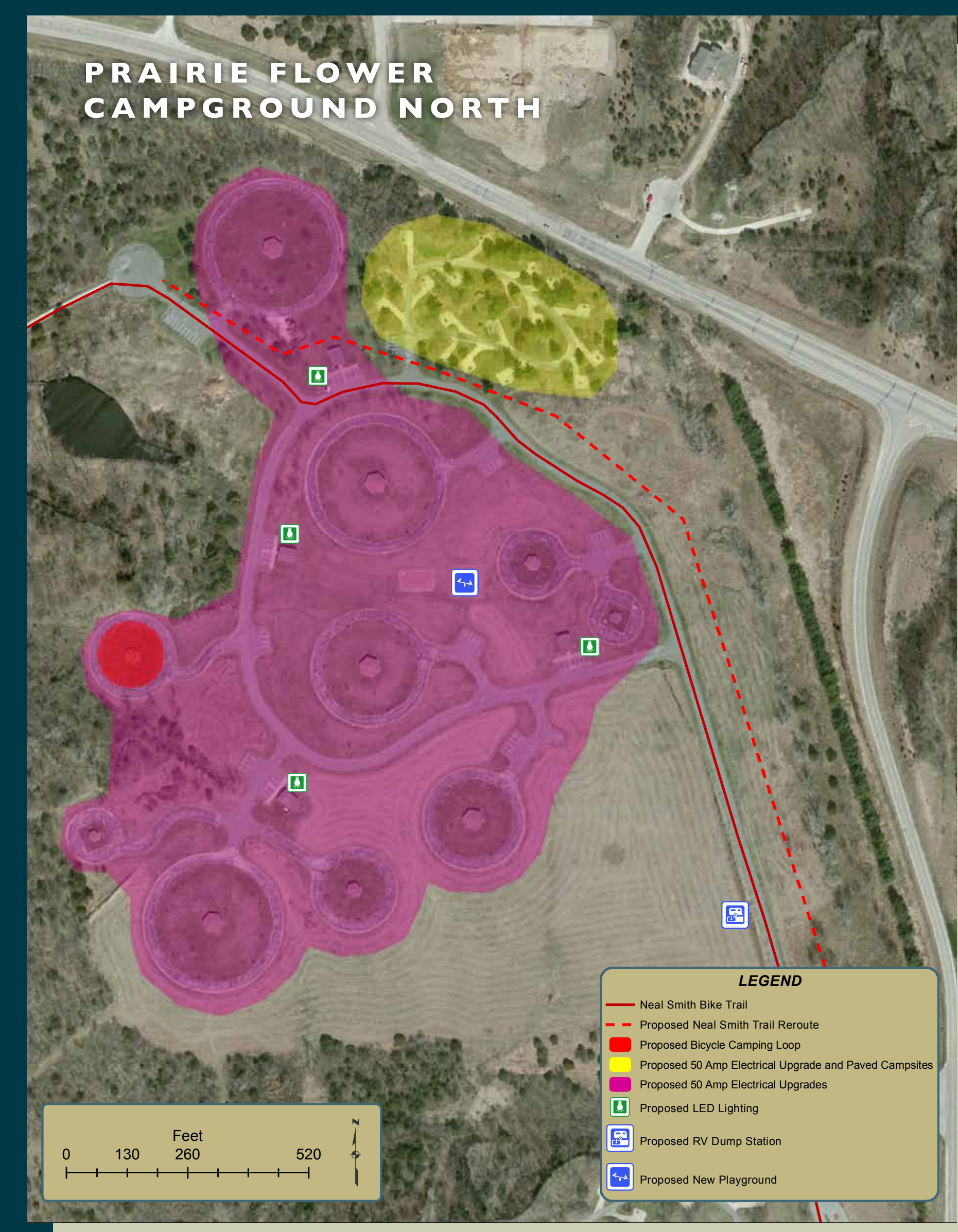
All campgrounds are open to both RV and tent camping; however Prairie Flower Campground also offers group loops, which allows a large group to camp together in a wagon-wheel formation.



Cherry Glen and Prairie Flower Campgrounds are highly utilized campgrounds in comparison to Saylorville Lake's additional campgrounds. These proposed improvements will bring a higher level of quality service for the public.

CHERRY GLEN CAMPGROUND IMPROVEMENTS

- Redesign campground entrance
- Install new playground
- Wi-Fi availability
- Concrete campsites/remove poor sites
- Addition of an amphitheater
- Municipal sewer connection



PRAIRIE FLOWER CAMPGROUND IMPROVEMENTS

- Reroute Neal Smith Trail off roadway
- Concrete campsites
- Upgrade electrical to 50 amp service (A-Loop & North loop)
- Wi-Fi availability
- Add new dump station in North loop
- Addition of an amphitheater
- Create a bicycle camping loop
- Municipal sewer connection

