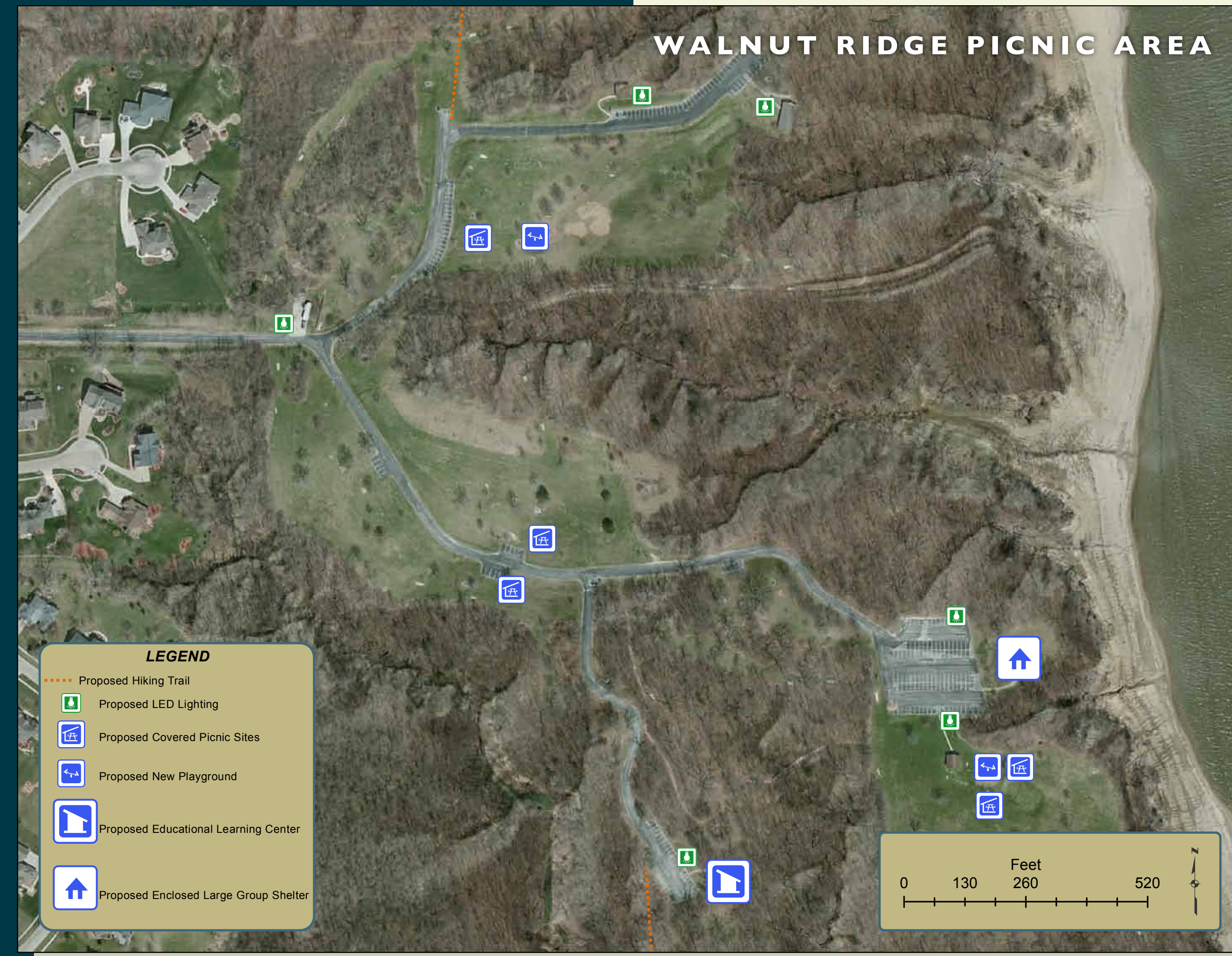


SANDPIPER & WALNUT RIDGE PICNIC AREA

With these two different picnic areas to choose from, Saylorville Lake offers a wide variety of recreation opportunities. Outdoor recreation provides physical, emotional and social benefits to individuals by keeping them healthy, reducing stress and re-energizing the body and mind, and bringing friends and families together. The various recreation activities provide opportunities for a variety of social events at Saylorville Lake.



Both picnic areas have unique opportunities which include disc golf, a volunteer village, a super sized picnic shelter, restrooms, water and playgrounds. Sandpiper's large picnic shelter has sand volleyball, two fireplaces, group grills, lighting, electric outlets and picnic tables. Walnut Ridge picnic shelters have volleyball uprights, a fireplace, group grill, lighting, electric outlets and picnic tables. All shelters can be reserved for a fee, but are also available on a first come first serve basis for no charge.

WALNUT RIDGE PICNIC AREA IMPROVEMENTS

The highly popular Walnut Ridge disc golf course is managed in partnership with Des Moines Disc Golf Association. This disc golf course is recognized nationally and has hosted some large national tournaments. This area receives moderate picnic use but through proposed improvements, new opportunities and a higher level of quality service will be offered for the public.



- Addition of new enclosed larger group shelter
- New educational learning center
- Add small single family picnic shelters
- Install new playgrounds
- Install efficient LED lighting
- Beaver Drive trail connection
- West Side hiking trail connections
- Municipal sewer connection



SANDPIPER PICNIC AREA IMPROVEMENTS

Sandpiper Picnic Area and Volunteer Village is a unique area which offers a large group shelter, playground, bathroom and a volunteer village with campsites. Volunteer Village is an area dedicated to providing a quality living area for full time volunteers. Volunteers donate in excess of 12,000 hours annually, providing an immeasurable service to Saylorville Lake. The proposed improvements will offer new opportunities and a higher level of quality service to the public and volunteers.



- Upgrade large picnic shelter
- Install roadway for loading/unloading access for picnic shelter
- New modern fish cleaning station
- Install efficient LED lighting
- Pave Volunteer Village roadway
- Concrete Volunteer Village campsites
- Wi-Fi availability for volunteers
- High-water berm around Volunteer Village
- Install an Automated fee collection station
- Municipal sewer connection
- New overlook pull-offs