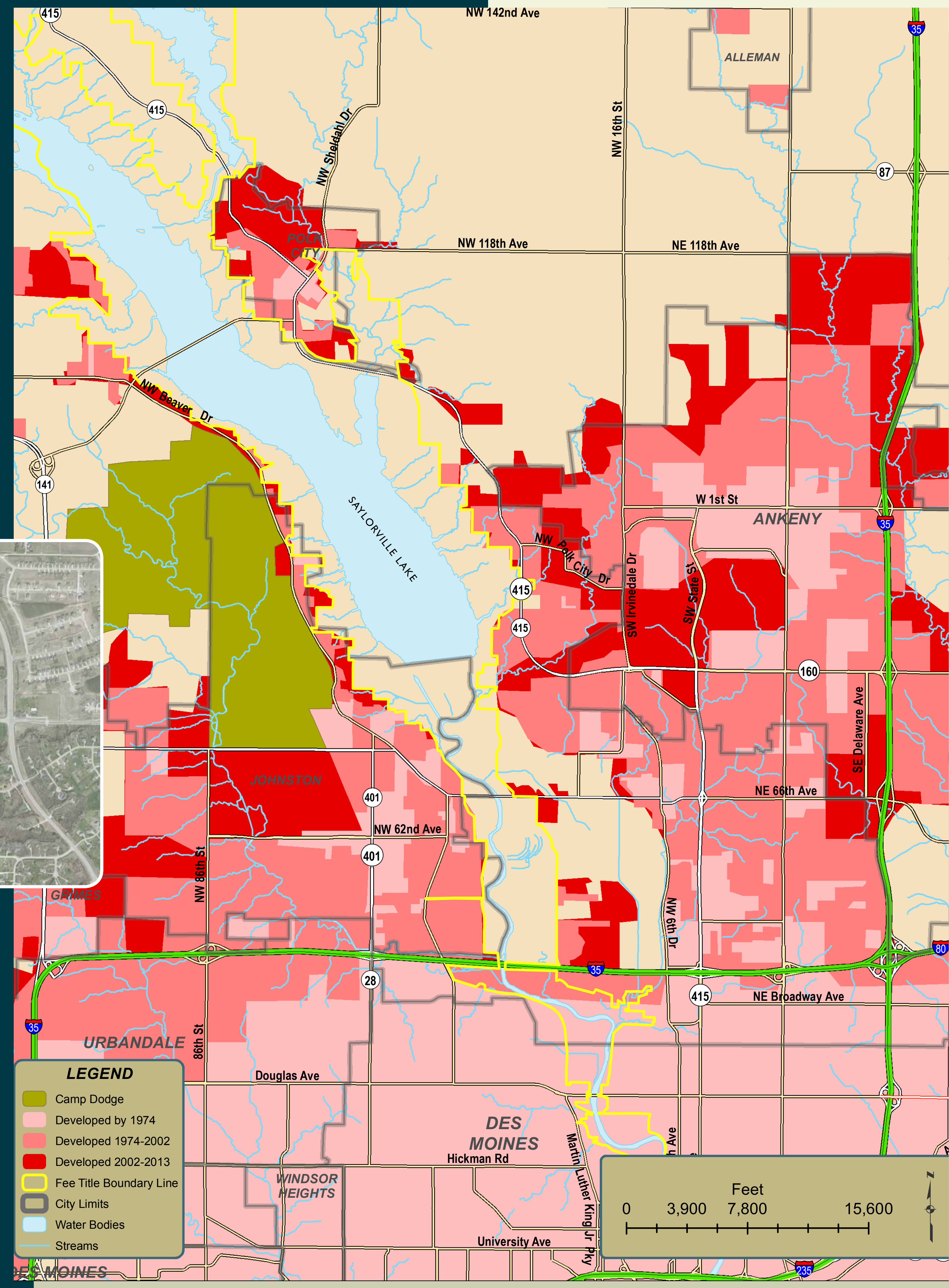


URBAN SPRAWL

Lands bordering Saylorville Lake are experiencing rapid urban development. The main body of the lake is nearly surrounded by the cities of Ankeny, Johnston, and Polk City. This adjacent development has many impacts on the ability of Saylorville Lake to meet its Missions.



WILDLIFE IMPACT

Urban sprawl has significant impacts on wildlife including habitat loss and increased human/wildlife conflict, animal vehicle collisions etc. This also puts more pressure on existing habitats on government owned lands.



MANAGING NATURAL RESOURCES

Adjacent development also complicates the management of natural resources on government owned lands. Prescribed fire is a preferred method to manage grasslands and forest resources. The use of prescribed fire in an urban setting is complicated, as extra care must be taken to ensure protection of private property and to manage the smoke that is generated during the fire.



STORMWATER RUNOFF

Development increases stormwater runoff. Without proper management excess stormwater flows onto government lands and bring with it sediment and pollution. Increased stormwater velocities can also cause severe erosion owned government lands.



NOTE: All improvement photos are for illustration and concept purposes only.