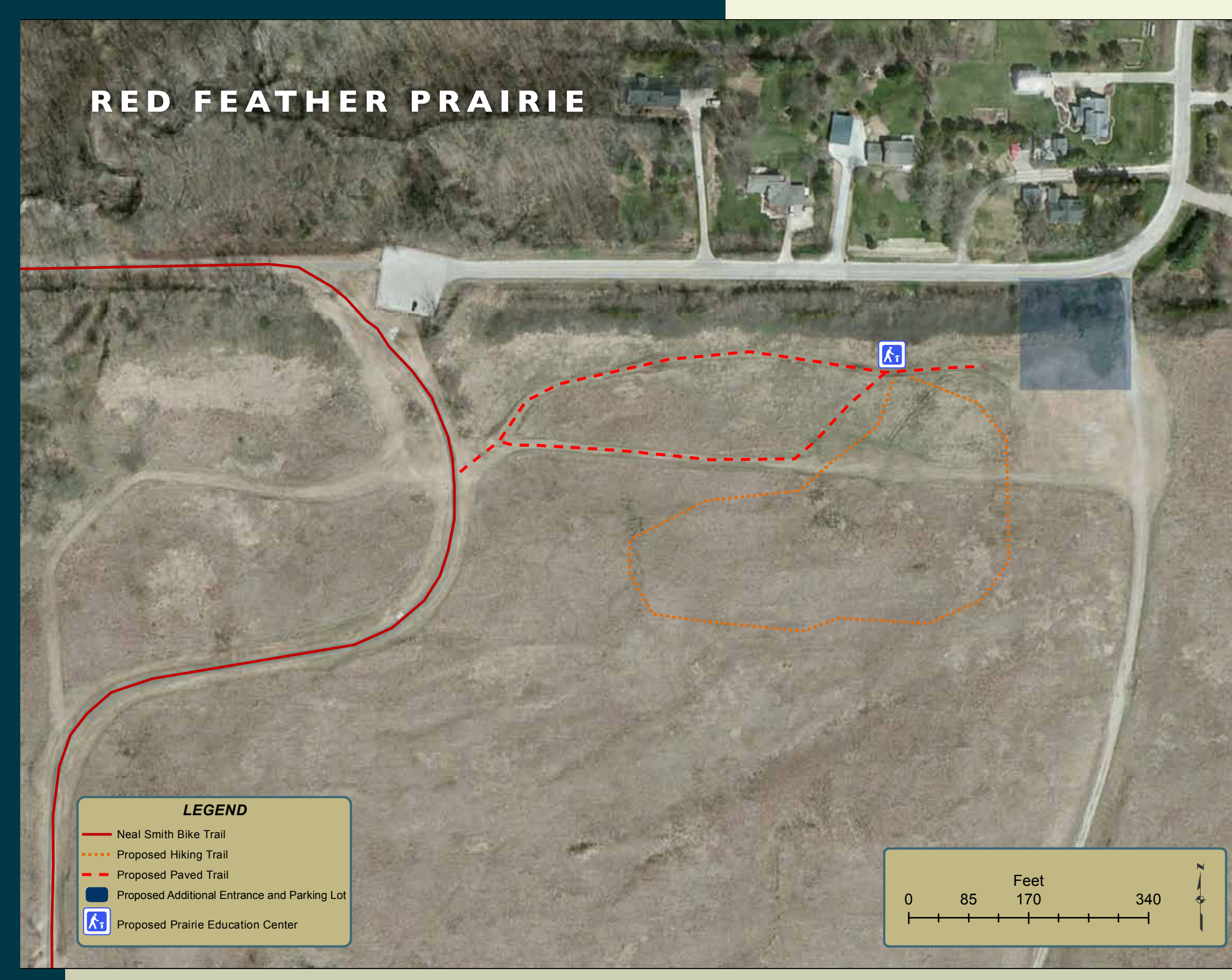
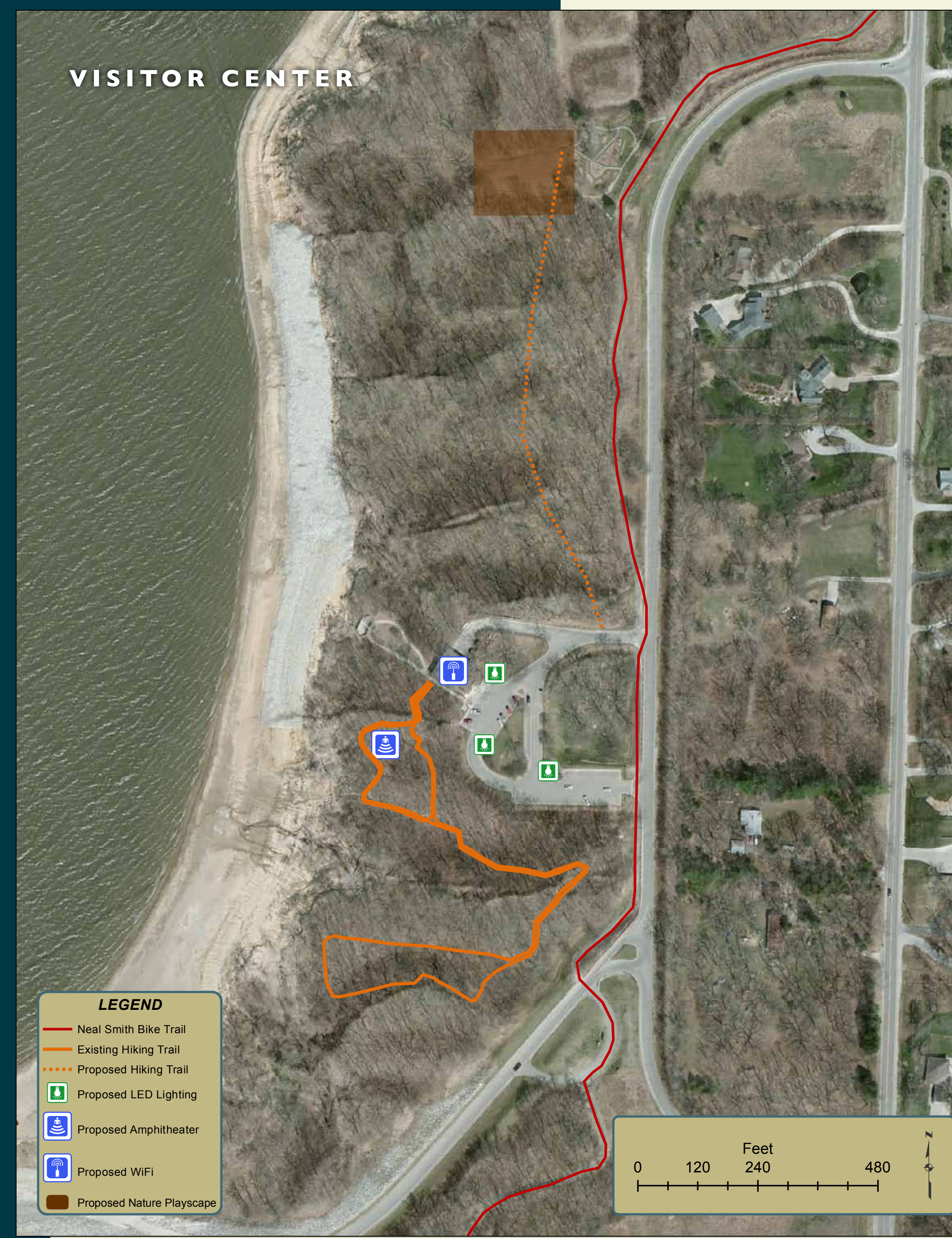


VISITOR CENTER & RED FEATHER PRAIRIE

The Interpretive Services and Outreach Program (ISOP) is an essential part of the Corps Civil Works program. Through this program we can communicate Corps missions and accomplishments, achieve management objectives, and foster environmental stewardship. Reaching diverse audiences and partners, it can improve visitor and employee safety, help with team cohesiveness, and enhance visitor's experiences by providing interpretive resources to meet their needs. It is one of the most effective tools we have to connect with the public, our user groups, partners and stakeholders.



The Visitor Center and Red Feather Prairie at Saylorville Lake provide a unique, designated area to educate and inform the public.

EXISTING FACILITIES

- Visitor Center with a restroom facility
- Interpretive hiking trail
- Lake overlook deck
- Butterfly garden
- Picnic sites
- Prairie restoration site

The Visitor Center and Red Feather Prairie are an important area to maintain and improve to meet modern needs for communication and educational outreach.

VISITOR CENTER PROPOSED IMPROVEMENTS

- Addition of a natural playscape area
- Install new hiking trail from Visitor Center to natural playscape area
- Add new outdoor amphitheater
- Municipal sewer connection
- Wi-Fi availability

RED FEATHER PRAIRIE PROPOSED IMPROVEMENTS

- Revive prairie kiosk
- Install trail loop from Neal Smith Trail to kiosk
- Install parking lot and entrance road
- Install a prairie trail