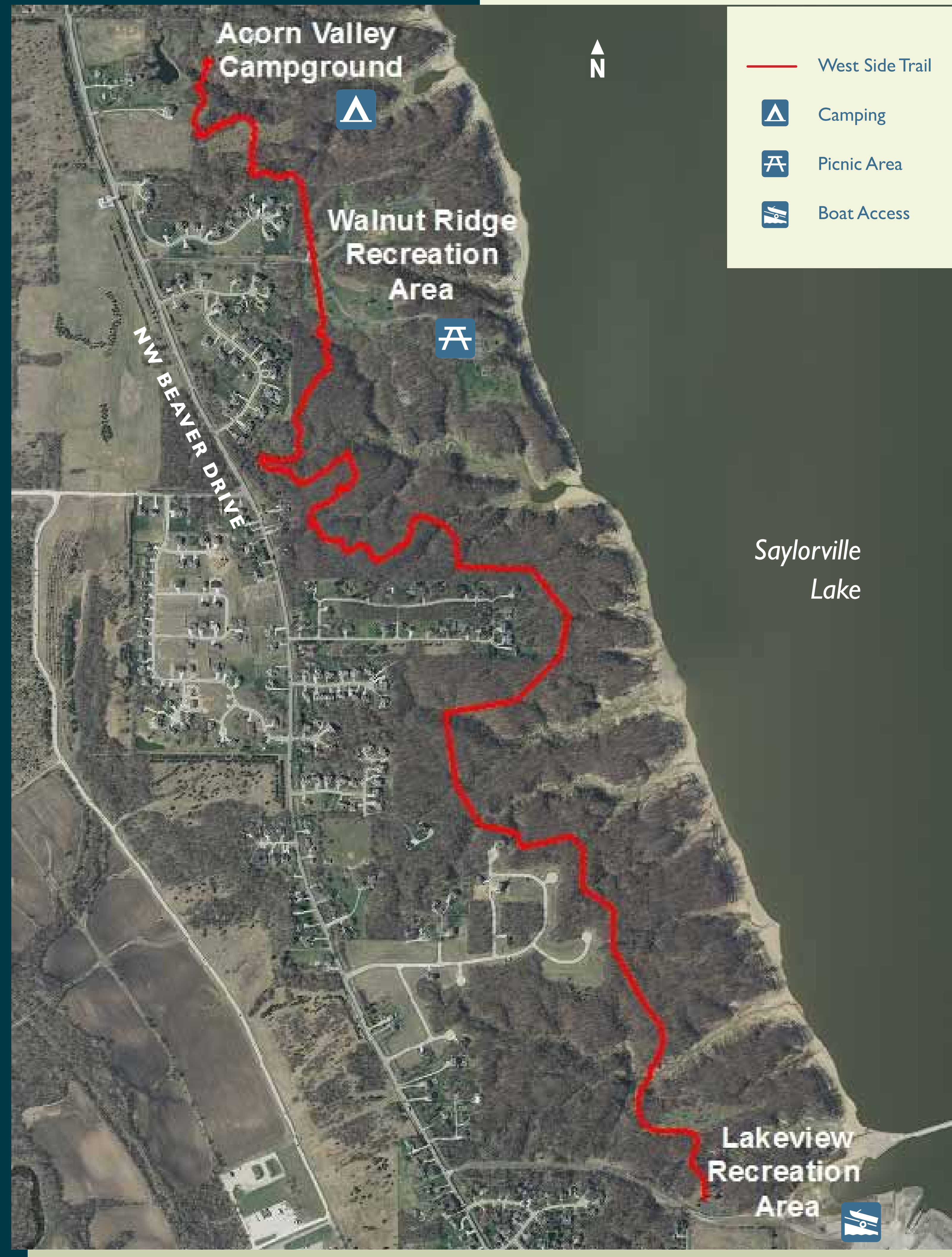


WEST SIDE TRAIL

Saylorville Lake has recently seen an increase in trail advocates seeking natural surfaced multi-use trails that offer a sense of remote solitude. Due to the altered landscape in Iowa, limited public lands, natural area fragmentation, and urban growth, specifically in Central Iowa, there are limited opportunities to enjoy remote natural surfaced trails. This has spurred interest in the revitalization of a 3.5 mile abandoned hiking trail along the rugged west side of the Saylorville Lake project. This trail is historically known as the West Side Trail.



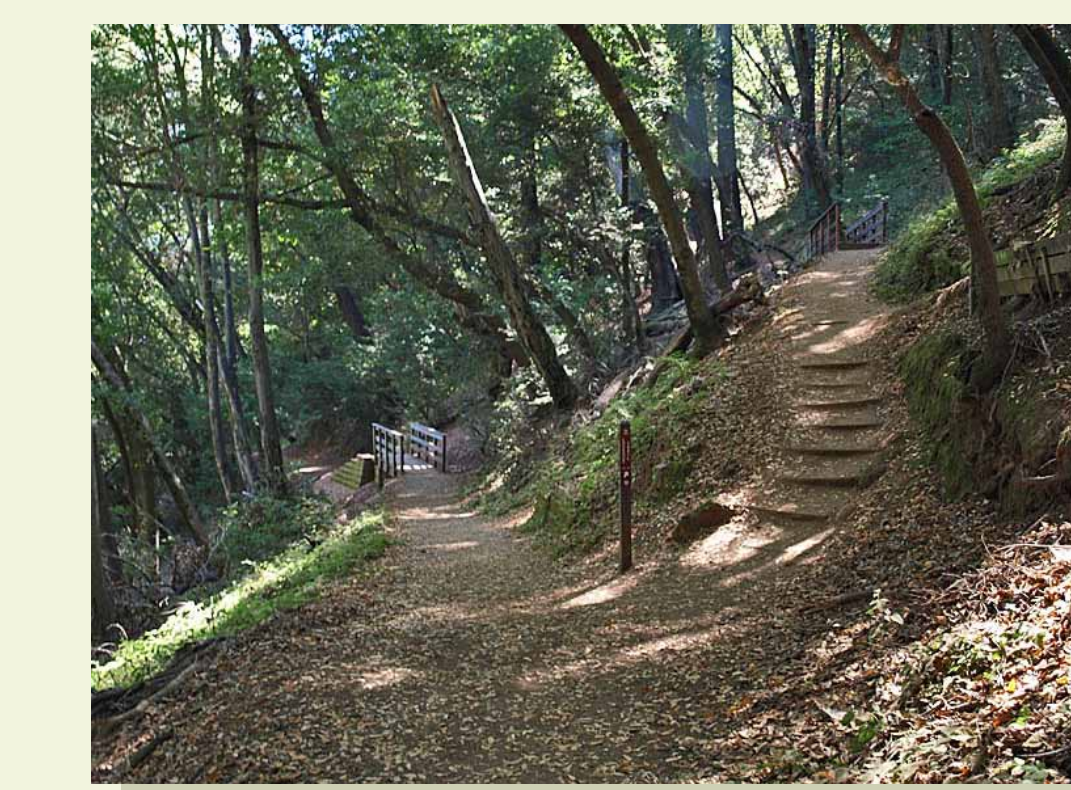
CHALLENGES

The Corps was presented with several challenges in maintaining the trail. The combination of several issues caused the closure of the trail and present day abandonment. The current conditions of the trail present several issues.

1. Very rugged terrain limits accessibility and safe, feasible trail routing.
2. Frequent fluctuation in the Saylorville Lake pool level has resulted in bank stability issues, severe erosion, and bridge damage.
3. Maintenance costs, manpower and budgets, limit the feasibility of keeping the trail open.
4. Increased urban development adjacent to the trail has changed the hydrology of the landscape and remote aspect of the trail.

FUTURE TRAIL PLANNING PROCESS

Due to the challenges presented with the trail, a planning process will have to be implemented to understand the feasibility of the trail.



- Review of existing trail – Prior to developing a trail reconstruction proposal an extensive current conditions assessment needs to take place.
- Develop a trail proposal – A trail proposal should be generated to understand the following:
 - Background and perceived need for the trail.
 - Overall trail purpose.
 - Intended users.
 - Scope of the reconstruction.
 - Timing of the development of the trail.
 - Any possible partnership support.
- Develop a concept design – Research of similar trails and discussions with trail groups will need to take place to develop a trail design.
- Develop a funding plan – Investigate the trail's economic viability.
- Develop a maintenance and management plan – A plan should outline the items that need to be maintained, by whom, how often, and any costs.