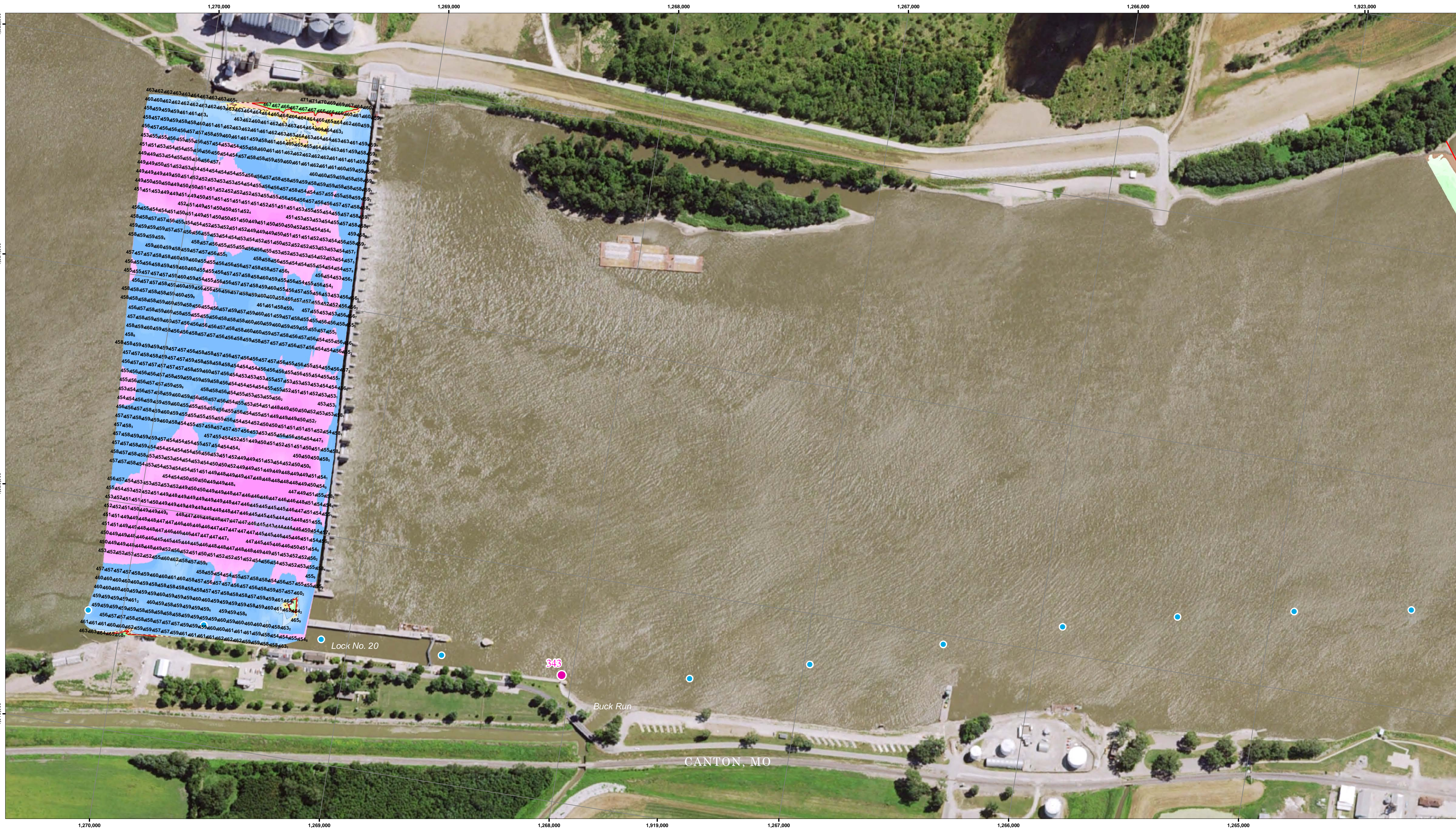




Symbol	Description	Date	Approved
	Points represent shallowest depth value derived from 40 foot grid.		
	Map Document Grid is 1000' x 1000'		

U.S. ARMY ENGINEER DISTRICT CORPS OF ENGINEERS	Designed By:	Date: 10/2/2017
	Drawn By:	File No:
	Checked By:	U.S.O. Sheet File Name:
	Reviewed By:	Solicitation Number:

Sheet
Reference
Number
of

NOTES:

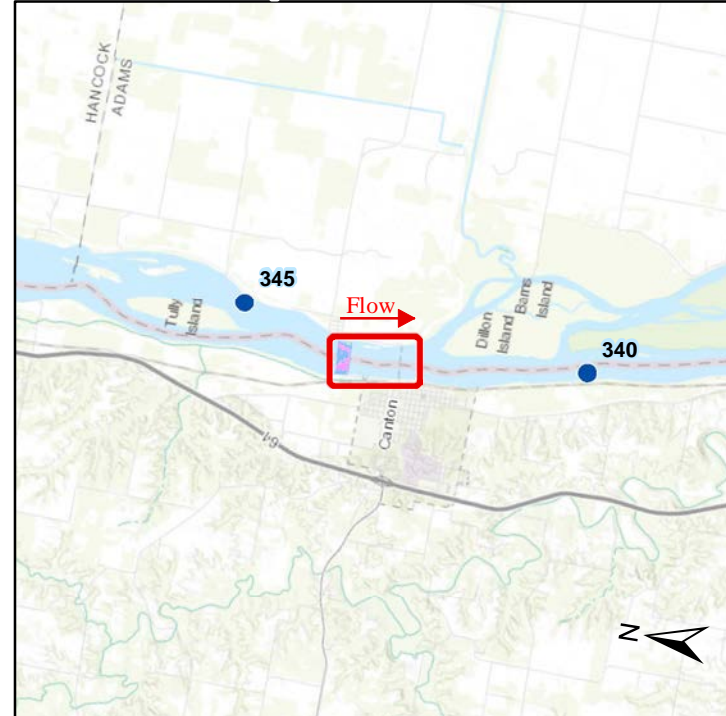
Survey Date: September 26, 2017
Conducted by: Cory B, Alisa B, Bjorn B

Survey Vessel: MV Hinds
Flat Pool: 476.5
Water Surface: 479.8
Stage: +3.8
Upstream Gauge: Lock 20 Tail RM 343.2
Downstream Gauge: Lock 20 Pool RM 343.2

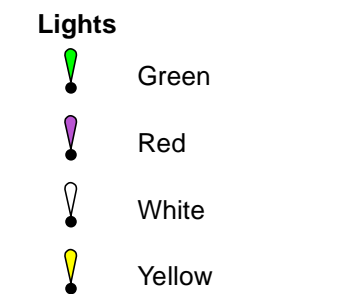
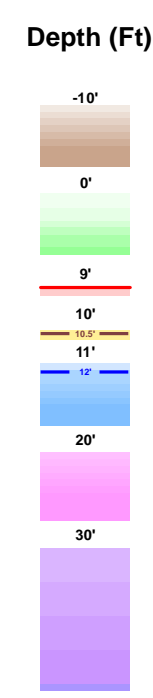
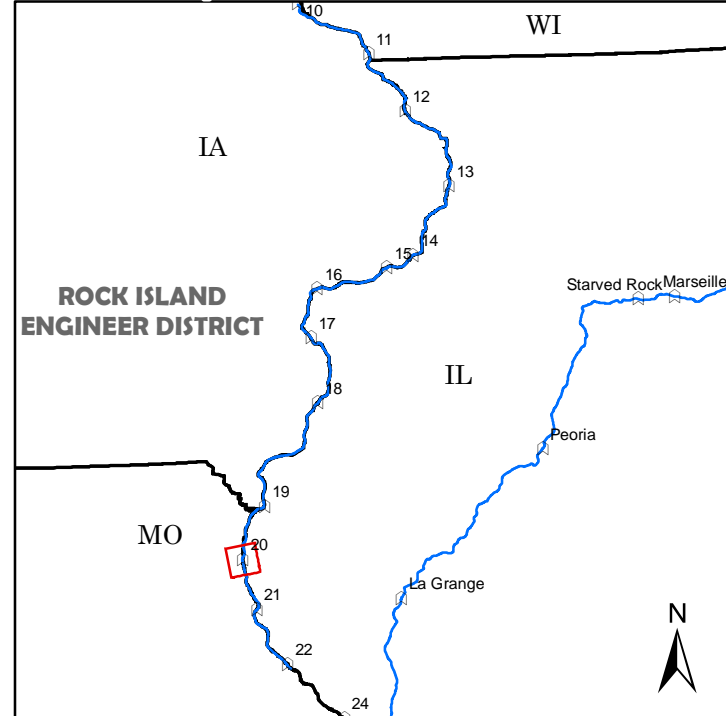
Horizontal Projection: State Plane, NAD 1983
Illinois West - 1202, U.S. Survey Feet
Vertical Datum: MSL 1912 U.S. Survey Feet.
Imagery: 2015 USDA NAIP

The information depicted on this map represents the results of
a survey conducted on the date indicated and
can only be considered to represent the general condition
existing at that time.

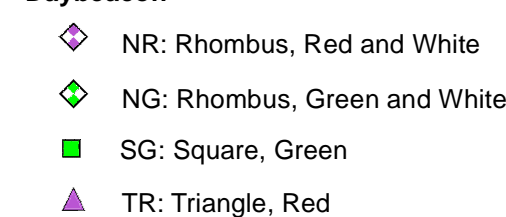
Site Detail Location Map



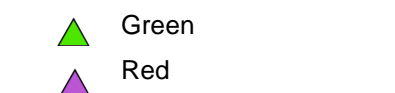
Site Location Map



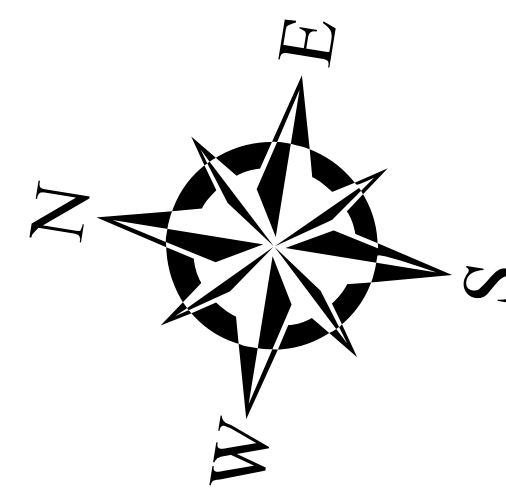
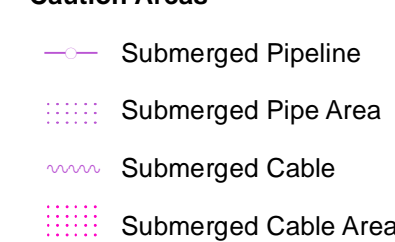
Daybeacon



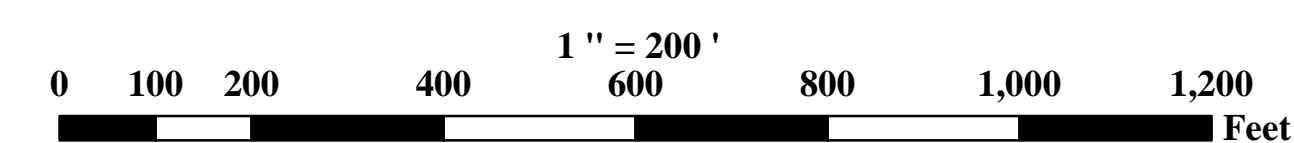
Lateral Buoys



Caution Areas



US ARMY CORPS OF ENGINEERS
ROCK ISLAND DISTRICT
CEMVR - OD-T
WATERWAY: UPPER MISSISSIPPI RIVER
POOL: 20
REACH: Lock and Dam 20 Upper
REACH MILES: 343.3 to 344.6
SURVEY TYPE: PERIODIC



SURVEYED RIVER MILES: 343.2-343.4