

UPSTREAM

DOWNSTREAM



Symbol	Description	Date	Approved

U.S. ARMY ENGINEER DISTRICT CORPS OF ENGINEERS	Designed By:	Date: 3/27/2015
	Drawn By:	File No.:
	Checked By:	U.S.O. Sheet File Name:
	Reviewed By:	Solicitation Number:

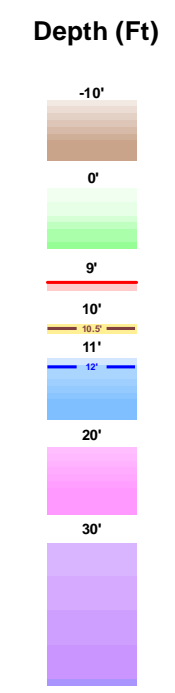
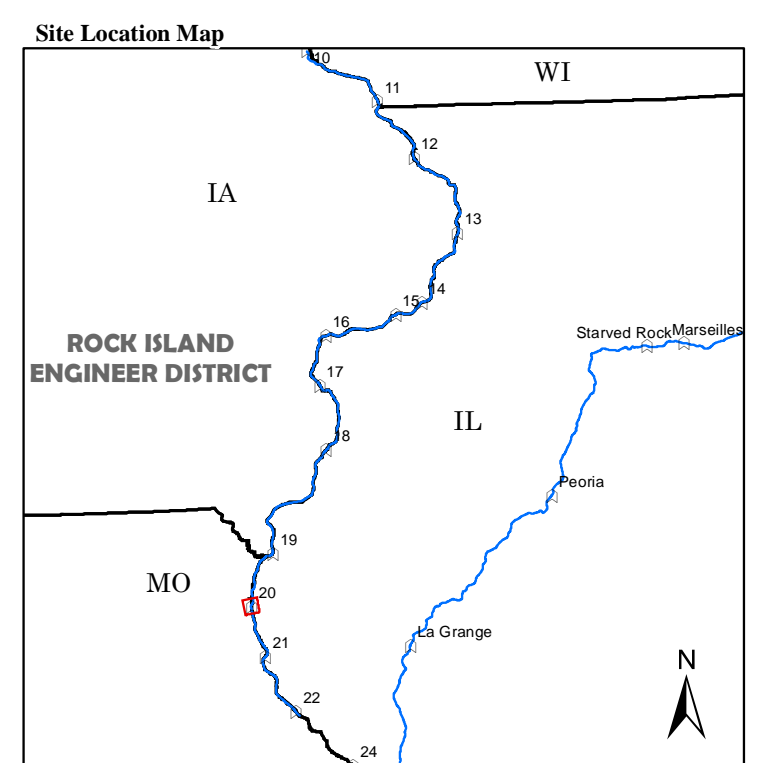
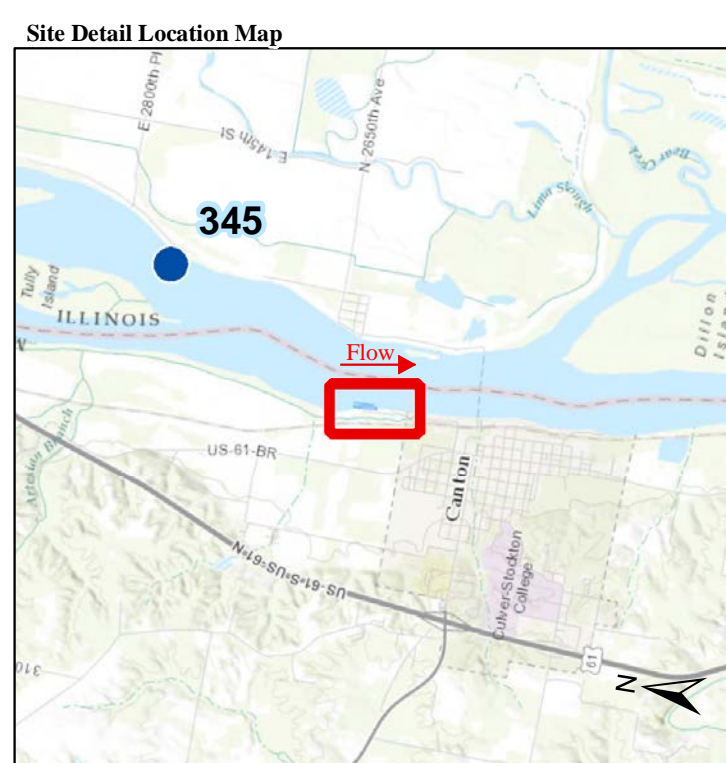
Sheet
Reference
Number
1 of 1

NOTES:
 Survey Date: March 25, 2015
 Conducted by: Matt M, Cory B, Lee S

 Survey Vessel: MV Hinds
 Flat Pool: 476.5
 Water Surface: 478.3
 Stage: +1.8
 Upstream Gage: Lock 20 Pool RM 343.2
 Downstream Gage:

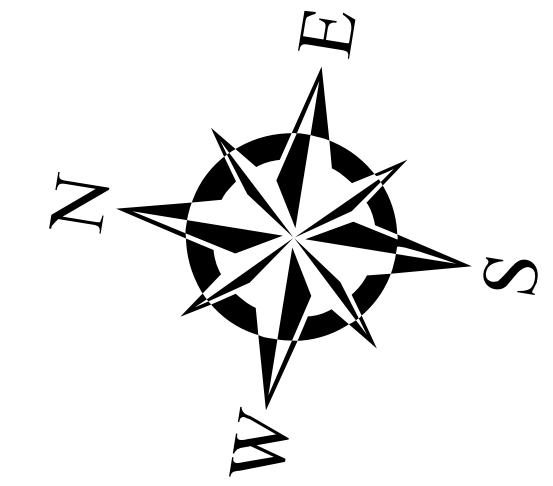
Horizontal Projection: State Plane, NAD 1983
 Illinois West - 1202, U.S. Survey Feet
 Vertical Datum: MSL 1912 U.S. Survey Feet
 Imagery: 2014 USDA NAIP

The information depicted on this map represents the results of a survey conducted on the date indicated and can only be considered to represent the general condition existing at that time.

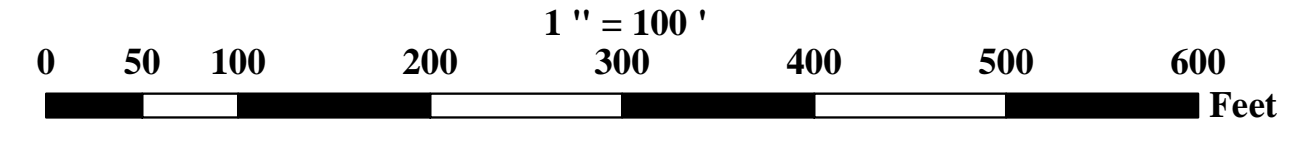


- River Mile**
 - Mile: Pink circle
 - Tenth: Blue circle
- River Features**
 - Wing Dam Location: Red line
- Lights**
 - Green: Green circle
 - Red: Red circle
 - White: White circle
 - Yellow: Yellow circle

- Daybeacon**
 - NR: Rhombus, Red and White
 - NG: Rhombus, Green and White
 - SG: Square, Green
 - TR: Triangle, Red
- Lateral Buoys**
 - Green: Green diamond
 - Red: Red diamond



US ARMY CORPS OF ENGINEERS
 ROCK ISLAND DISTRICT
 CEMVR - OD-T
 WATERWAY: UPPER MISSISSIPPI RIVER
 POOL: 20
 REACH: Lock and Dam 20 Upper
 REACH MILES: 343.2-343.4
 SURVEY TYPE: CONDITION



SURVEYED RIVER MILES: 343.2-343.4

Processed in ArcGIS by: John Hayes 3/27/2015
 Document Name: UM_24_UMR_20150330U