

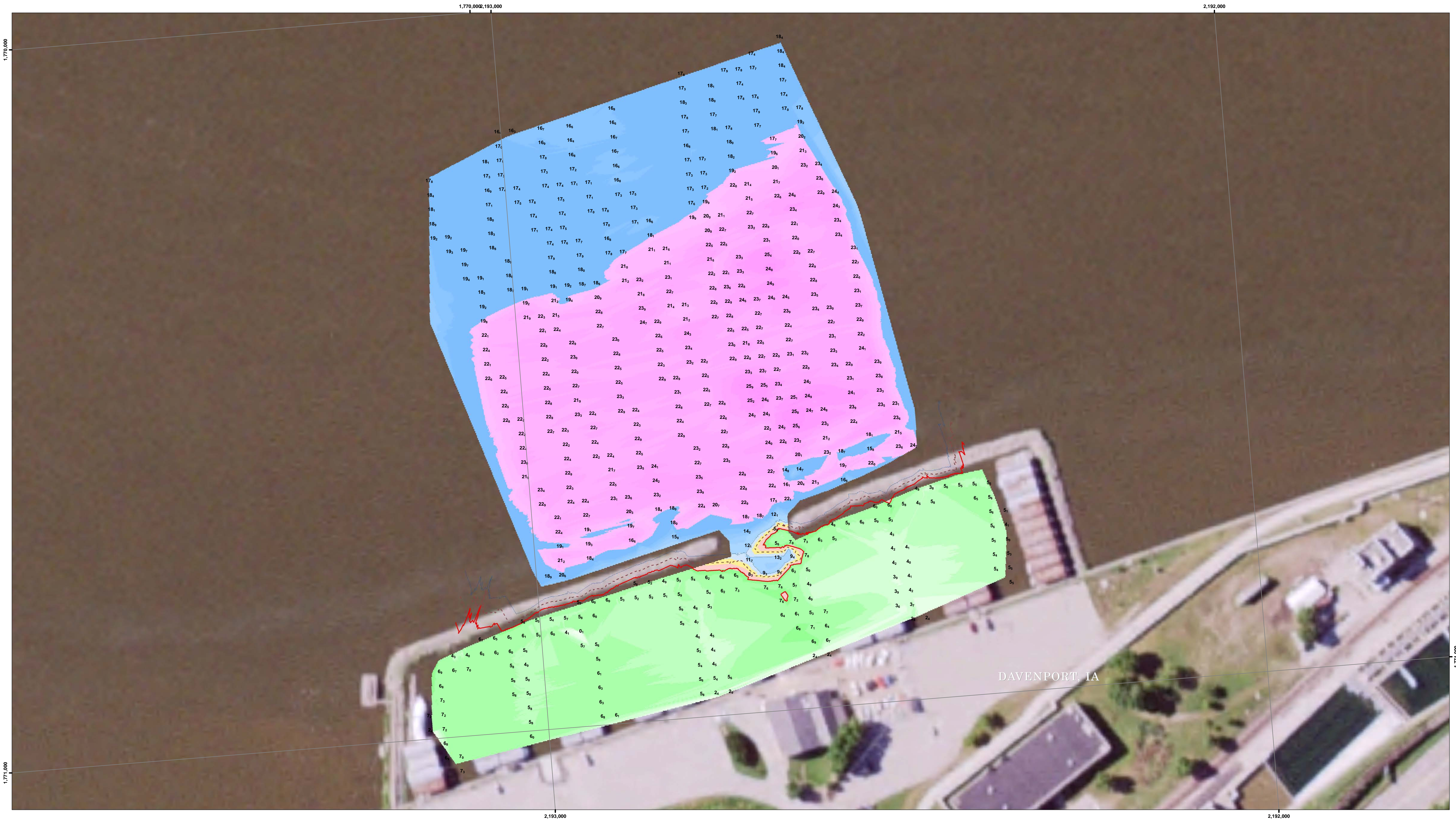
Date	Description	Symbol	Approved

U.S. ARMY ENGINEER DISTRICT CORPS OF ENGINEERS	Designed By:	Date: 6/9/2017
	Drawn By:	File No.:
	Checked By:	U.S.O. Sheet File Name:
	Reviewed By:	Solicitation Number:

Sheet Reference Number of

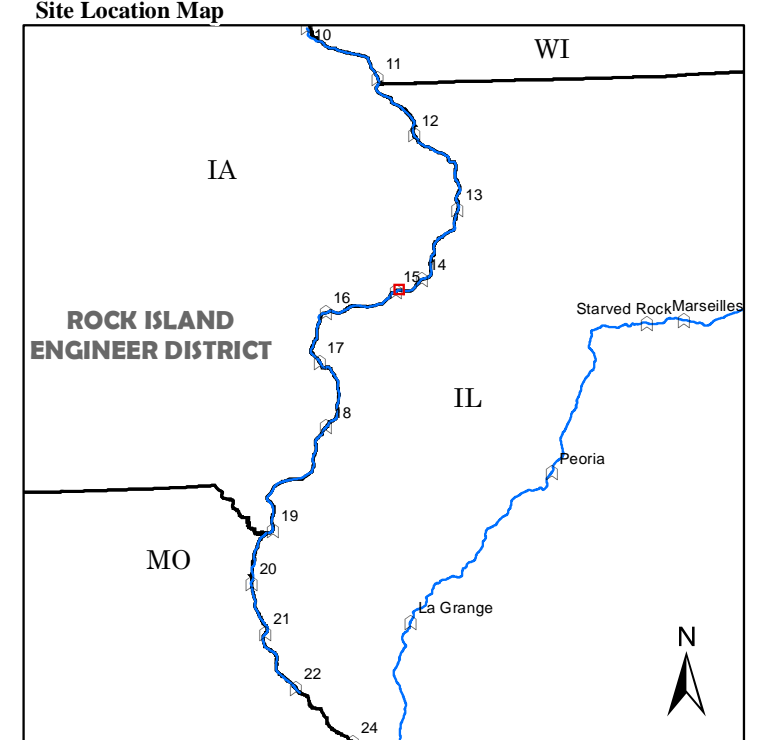
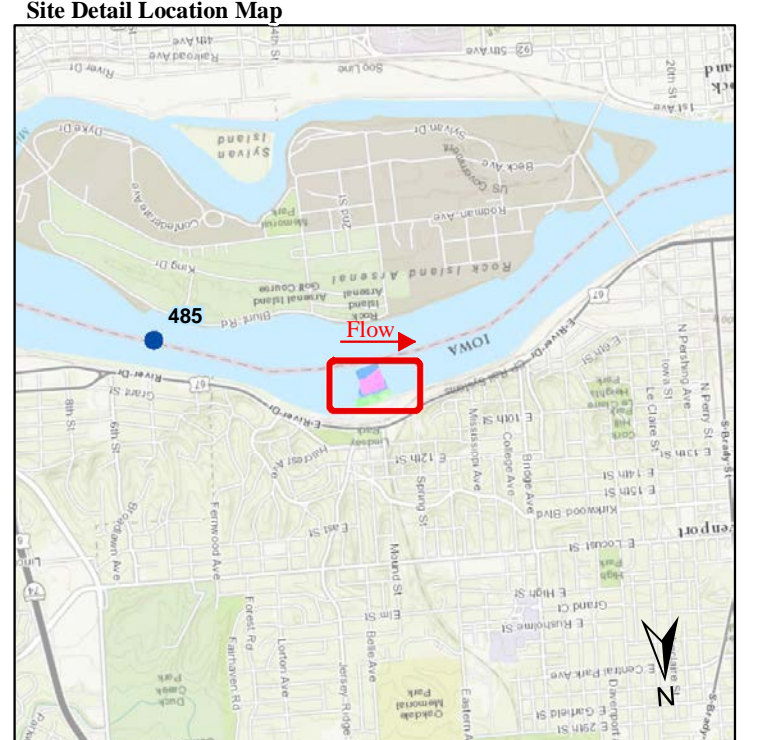
UPSTREAM

DOWNSTREAM



**NOTES:**  
 Survey Date: June 6, 2017  
 Conducted by: Mike M, Steve G  
  
 Survey Vessel: Launch Coot  
 Flat Pool: 561  
 Water Surface: 560.9  
 Stage: -0.1  
 Upstream Gauge: Lock 14 Tail RM 493.3  
 Downstream Gauge: Lock 15 Pool RM 482.9

*Horizontal Projection: State Plane, NAD 1983  
 Illinois West - 1202, U.S. Survey Feet  
 Vertical Datum: MSL 1912 U.S. Survey Feet.  
 Imagery: 2015 USDA NAIP*



**Depth (Ft)**

- 10'
- 0'
- 5'
- 10'
- 11'
- 20'
- 30'
- 50'

**River Mile**

- Mile
- Tenth

**River Features**

- Wing Dam Location

**Lights**

- Green
- Red
- White
- Yellow

**Daybeacon**

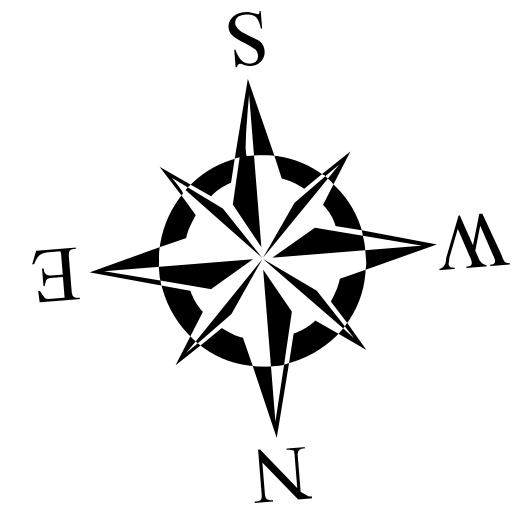
- NR: Rhombus, Red and White
- NG: Rhombus, Green and White
- SG: Square, Green
- TR: Triangle, Red

**Lateral Buoys**

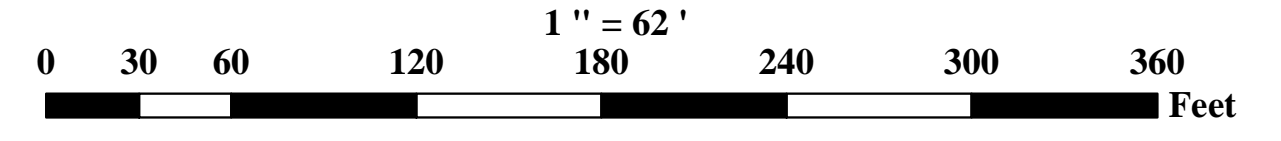
- Green
- Red

**Caution Areas**

- Submerged Pipeline
- Submerged Pipe Area
- Submerged Cable
- Submerged Cable Area



US ARMY CORPS OF ENGINEERS  
 ROCK ISLAND DISTRICT  
 CEMVR - OD-T  
 WATERWAY: UPPER MISSISSIPPI RIVER  
 POOL: 15  
 REACH: Arsenal Island  
 REACH MILES: 484 to 485.1  
 SURVEY TYPE: CONDITION



SURVEYED RIVER MILES: 484.1-484.2