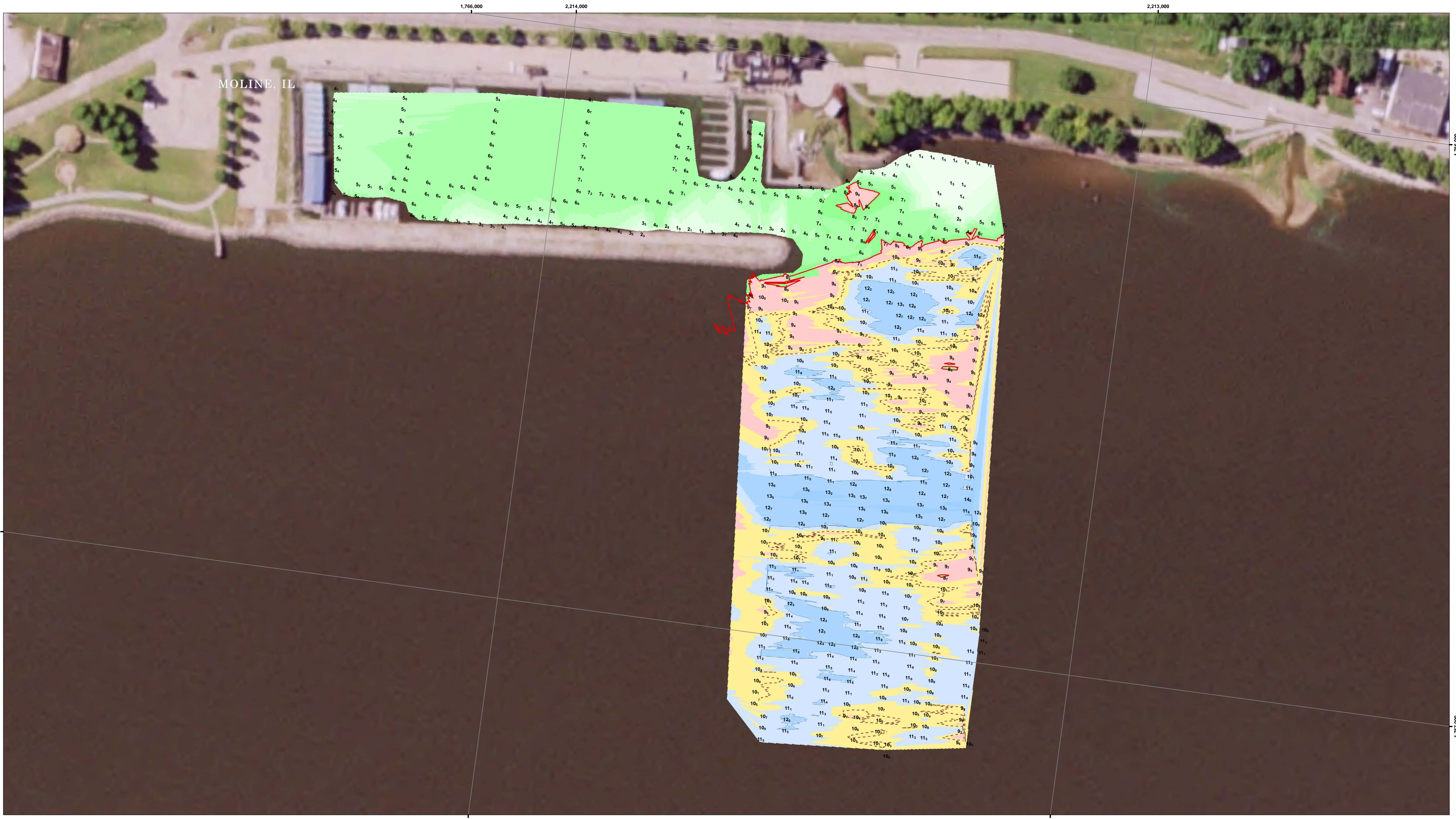


UPSTREAM

DOWNSTREAM



Symbol	Description	Date	Approved

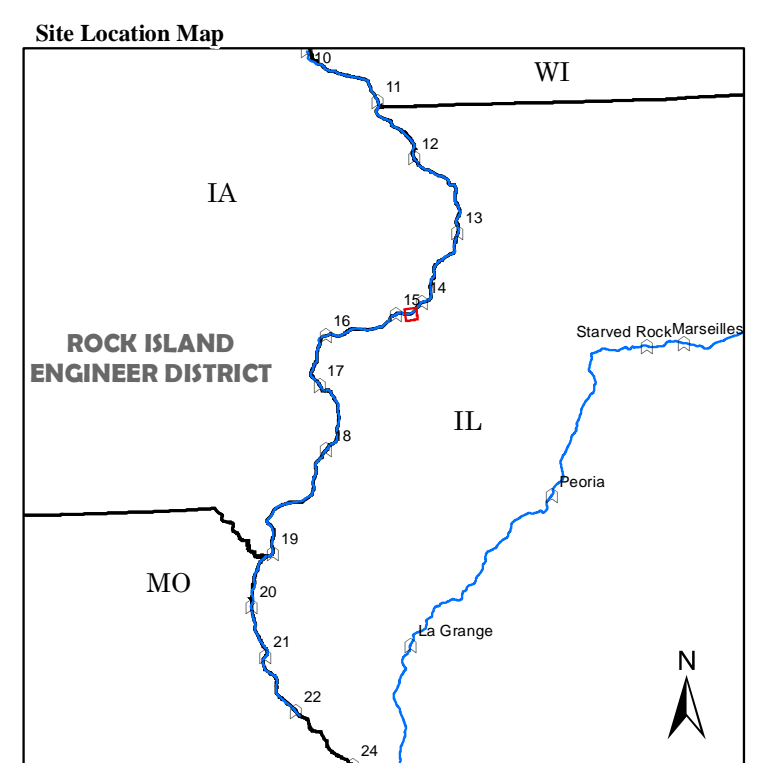
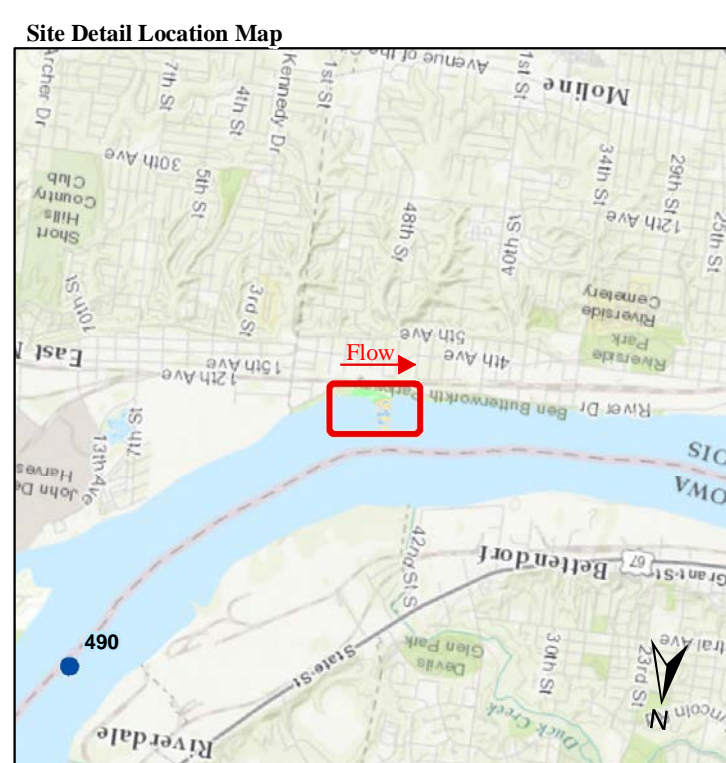
U.S. ARMY ENGINEER DISTRICT CORPS OF ENGINEERS	Designed By:	Date: 6/9/2017
	Drawn By:	File No.
	Checked By:	U.S.O. Sheet File Name:
	Reviewed By:	Specification Number:

Sheet  
Reference  
Number  
of

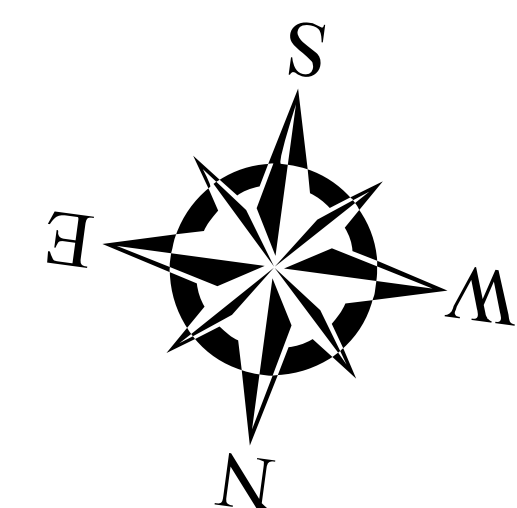
**NOTES:**  
 Survey Date: June 6, 2017  
 Conducted by: Mike M, Steve G  
  
 Survey Vessel: Launch Coot  
 Flat Pool: 561  
 Water Surface: 563.5  
 Stage: 2.5  
 Upstream Gage: Lock 14 Tail RM 493.3  
 Downstream Gage: Lock 15 Pool RM 482.9

Horizontal Projection: State Plane, NAD 1983  
 Illinois West - 1202, U.S. Survey Feet  
 Vertical Datum: MSL 1912 U.S. Survey Feet.  
 Imagery: 2015 USDA NAIP

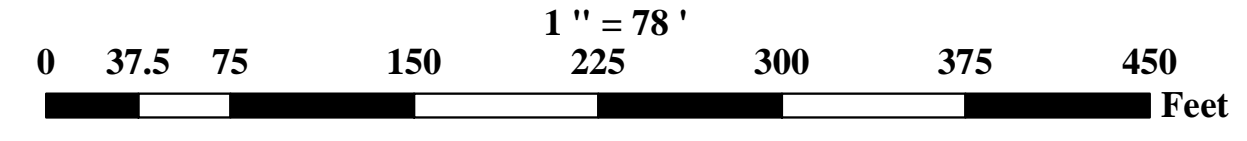
The information depicted on this map represents the results of a survey conducted on the date indicated and can only be considered to represent the general condition existing at that time.



- Depth (Ft)**
  - 10
  - 12
  - 14
  - 16
  - 18
  - 20
  - 22
  - 24
  - 26
  - 28
  - 30
  - 32
  - 34
  - 36
  - 38
  - 40
  - 42
  - 44
  - 46
  - 48
  - 50
- River Mile**
  - Mile
  - Tenth
- River Features**
  - Wing Dam Location
- Lights**
  - Green
  - Red
  - White
  - Yellow
- Daybeacon**
  - NR: Rhombus, Red and White
  - NG: Rhombus, Green and White
  - SG: Square, Green
  - TR: Triangle, Red
- Lateral Buoys**
  - Green
  - Red
- Caution Areas**
  - Submerged Pipeline
  - Submerged Pipe Area
  - Submerged Cable
  - Submerged Cable Area



US ARMY CORPS OF ENGINEERS  
 ROCK ISLAND DISTRICT  
 CEMVR - OD-T  
 WATERWAY: UPPER MISSISSIPPI RIVER  
 POOL: 15  
 REACH: Moline  
 REACH MILES: 487 to 488.2  
 SURVEY TYPE: CONDITION



SURVEYED RIVER MILES: 488.1-488.3