



U.S. ARMY CORPS OF ENGINEERS
REGULATORY PROGRAM
APPROVED JURISDICTIONAL DETERMINATION FORM (INTERIM)
NAVIGABLE WATERS PROTECTION RULE

I. ADMINISTRATIVE INFORMATION

Completion Date of Approved Jurisdictional Determination (AJD): 04-MAR-2021

ORM Number: MVR-2013-00261-ACM

Associated JDs: N/A or ORM numbers and identifiers (e.g. HQS-2020-00001-MSW-MITSITE)

Review Area Location¹:

State/Territory: IA City: County/Parish/Borough: Plymouth County

Center Coordinates of Review Area: Latitude 42.712943 Longitude -96.624257

II. FINDINGS

A. Summary: Check all that apply. At least one box from the following list **MUST** be selected. Complete the corresponding sections/tables and summarize data sources.

- ☒ The review area is comprised entirely of dry land (i.e., there are no waters or water features, including wetlands, of any kind in the entire review area). Rationale: N/A or describe rationale.
- ☐ There are "navigable waters of the United States" within Rivers and Harbors Act jurisdiction within the review area (complete table in section II.B).
- ☐ There are "waters of the United States" within Clean Water Act jurisdiction within the review area (complete appropriate tables in section II.C).
- ☐ There are waters or water features excluded from Clean Water Act jurisdiction within the review area (complete table in section II.D).

B. Rivers and Harbors Act of 1899 Section 10 (§ 10)²

§ 10 Name	§ 10 Size	§ 10 Criteria	Rationale for § 10 Determination
N/A	N/A	N/A	N/A

C. Clean Water Act Section 404

Territorial Seas and Traditional Navigable Waters ((a)(1) waters)³

(a)(1) Name	(a)(1) Size	(a)(1) Criteria	Rationale for (a)(1) Determination
N/A	N/A	N/A	N/A

Tributaries ((a)(2) waters):

(a)(2) Name	(a)(2) Size	(a)(2) Criteria	Rationale for (a)(2) Determination
N/A	N/A	N/A	N/A

Lakes and ponds, and impoundments of jurisdictional waters ((a)(3) waters):

(a)(3) Name	(a)(3) Size	(a)(3) Criteria	Rationale for (a)(3) Determination
N/A	N/A	N/A	N/A

Adjacent wetlands ((a)(4) waters):

(a)(4) Name	(a)(4) Size	(a)(4) Criteria	Rationale for (a)(4) Determination
N/A	N/A	N/A	N/A

¹ Map(s)/Figure(s) are attached to the AJD provided to the requestor.

² If the navigable water is not subject to the ebb and flow of the tide or included on the District's list of Rivers and Harbors Act Section 10 navigable waters list, do NOT use this document to make the determination. The District must continue to follow the procedure outlined in 33 CFR part 329.14 to make a Rivers and Harbors Act Section 10 navigability determination.

³ A stand-alone TNW determination is completed independently of a request for an AJD. A stand-alone TNW determination is conducted for a specific segment of river or stream or other type of waterbody, such as a lake, where independent upstream or downstream limits or lake borders are established. A stand-alone TNW determination should be completed following applicable guidance and should NOT be documented on the AJD form.

⁴ Some excluded waters, such as (b)(2) and (b)(4), may not be specifically identified on the AJD form unless a requestor specifically asks a Corps district to do so. Corps Districts may, in case-by-case instances, choose to identify some or all of these waters within the review area.

⁵ Because of the broad nature of the (b)(1) exclusion and in an effort to collect data on specific types of waters that would be covered by the (b)(1) exclusion, four sub-categories of (b)(1) exclusions were administratively created for the purposes of the AJD Form. These four sub-categories are not new exclusions, but are simply administrative distinctions and remain (b)(1) exclusions as defined by the NWPR.



U.S. ARMY CORPS OF ENGINEERS
REGULATORY PROGRAM
APPROVED JURISDICTIONAL DETERMINATION FORM (INTERIM)
NAVIGABLE WATERS PROTECTION RULE

D. Excluded Waters or Features

Excluded waters ((b)(1) – (b)(12))⁴:

Exclusion Name	Exclusion Size	Exclusion ⁵	Rationale for Exclusion Determination
N/A	N/A	N/A	N/A

III. SUPPORTING INFORMATION

A. Select/enter all resources that were used to aid in this determination and attach data/maps to this document and/or references/citations in the administrative record, as appropriate.

X Information submitted by, or on behalf of, the applicant/consultant: *Joint Application and JD submittal, Feb 2021*

This information is *partially* sufficient for purposes of this AJD.

Rationale: *The application provides the JD location but does not review the area for waters.*

 Data sheets prepared by the Corps: *Title(s) and/or date(s).*

X Photographs: *Regulatory Viewer with Aerial layer, March 4, 2021*

 Corps Site visit(s) conducted on: *Date(s).*

 Previous Jurisdictional Determinations (AJDs or PJDs): *ORM Number(s) and date(s).*

 Antecedent Precipitation Tool: *provide detailed discussion in Section III.B.*

X USDA NRCS Soil Survey: *Websoil Survey, March 4, 2021*

X USFWS NWI maps: *Regulatory Viewer with NWI layer, March 4, 2021*

X USGS topographic maps: *Regulatory Viewer with topo layer, March 4, 2021*

Other data sources used to aid in this determination:

Data Source (select)	Name and/or date and other relevant information
USGS Sources	Regulatory Viewer with NHD layer, March 4, 2021
USDA Sources	N/A.
NOAA Sources	N/A.
USACE Sources	N/A.
State/Local/Tribal Sources	N/A.
Other Sources	N/A.

B. Typical year assessment(s): N/A.

C. Additional comments to support AJD: This JD covers portions of an existing utility line ROW which is in an actively farmed field. There are no indications, after reviewing the NHD, NWI, topographic maps, and LIDAR, that there are aquatic resources within the JD area.

¹ Map(s)/Figure(s) are attached to the AJD provided to the requestor.

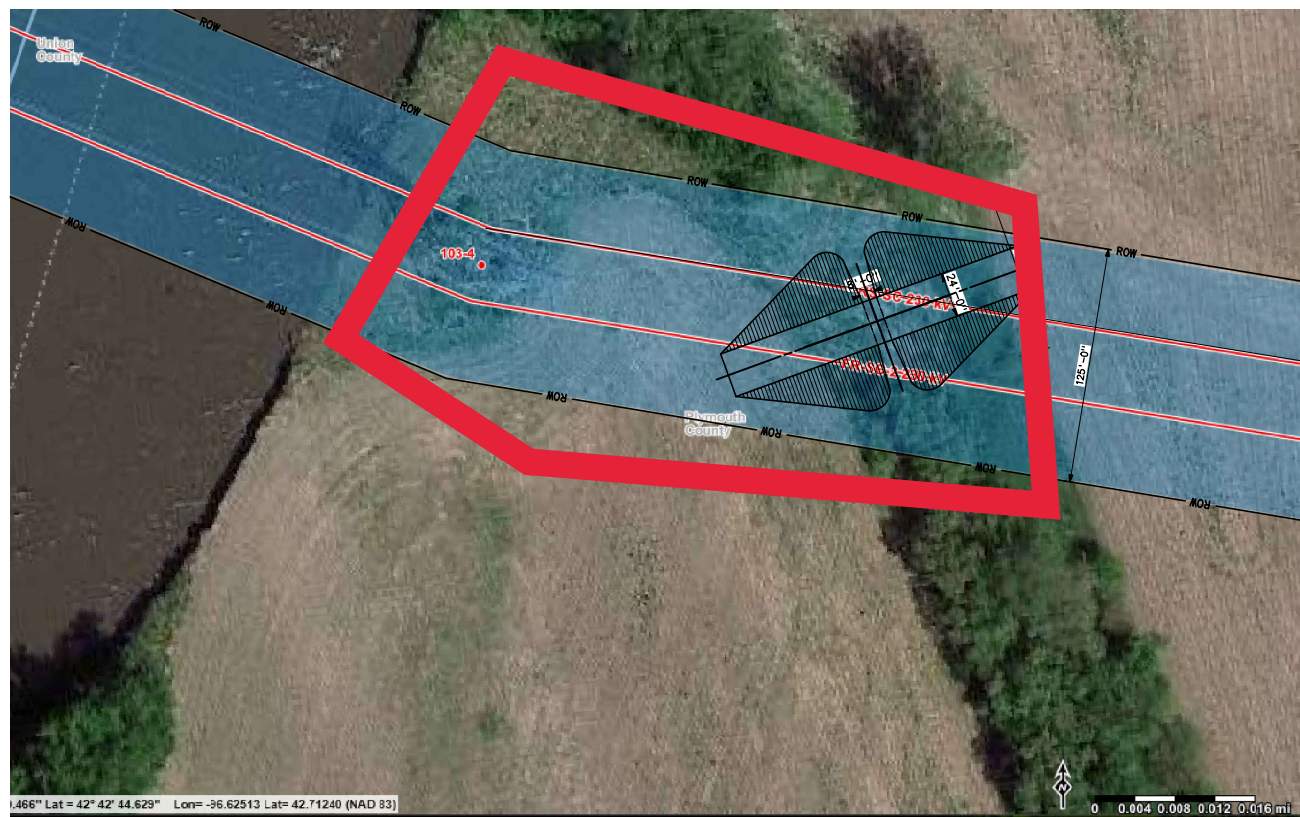
² If the navigable water is not subject to the ebb and flow of the tide or included on the District's list of Rivers and Harbors Act Section 10 navigable waters list, do NOT use this document to make the determination. The District must continue to follow the procedure outlined in 33 CFR part 329.14 to make a Rivers and Harbors Act Section 10 navigability determination.

³ A stand-alone TNW determination is completed independently of a request for an AJD. A stand-alone TNW determination is conducted for a specific segment of river or stream or other type of waterbody, such as a lake, where independent upstream or downstream limits or lake borders are established. A stand-alone TNW determination should be completed following applicable guidance and should NOT be documented on the AJD form.

⁴ Some excluded waters, such as (b)(2) and (b)(4), may not be specifically identified on the AJD form unless a requestor specifically asks a Corps district to do so. Corps Districts may, in case-by-case instances, choose to identify some or all of these waters within the review area.

⁵ Because of the broad nature of the (b)(1) exclusion and in an effort to collect data on specific types of waters that would be covered by the (b)(1) exclusion, four sub-categories of (b)(1) exclusions were administratively created for the purposes of the AJD Form. These four sub-categories are not new exclusions, but are simply administrative distinctions and remain (b)(1) exclusions as defined by the NWPR.

JD AREA



NOTES

1. CONTRACTOR SHALL PROVIDE, ON THE INNER RAMP, OUTER RAMP, AND 80 FEET ALONG THE TOP OF THE DIKE, AN ANCHORED REINFORCED VEGETATION SYSTEM (ARVS). SHALL CONSISTS OF A WOVEN HIGH-PERFORMANCE TURF REINFORCEMENT MAT (HPTRM) IN COMBINATION WITH PERCUSSION DRIVEN ANCHORS (PDAS) AND TIE-DOWN FASTENERS. ARVS SHALL BE XTREME ARMOR SYSTEM, CONFIGURATION 110 (XAS-110) AS MANUFACTURED BY WESTERN EXCELSIOR, OR EQUAL.

REFERENCE DRAWINGS

ACCESS RAMP OVER EXISTING DIKE
 AFTER STRUCTURE 103/4 ----- FR SC D 2033
 ACCESS RAMP OVER EXISTING DIKE AFTER
 STRUCTURE 103/4 DETAILS ----- FR SC D 2034

UNITED STATES DEPARTMENT OF ENERGY WESTERN AREA POWER ADMINISTRATION UPPER GREAT PLAINS CONSTRUCTION - IRRIG. SOUTHERN IOWA		
FORT RANDALL - SIOUX CITY IOWA		
ACCESS RAMP OVER EXISTING DIKE AFTER STRUCTURE 103/4 DETAILS		
DESIGNED GAYLEEN LOME	APPROVED TRAVIS MAAS MANAGER, UPPER GREAT PLAINS CONSTRUCTION OFFICE	
DATE FEBRUARY 4, 2021	FR SC D	2035