



U.S. ARMY CORPS OF ENGINEERS
REGULATORY PROGRAM
APPROVED JURISDICTIONAL DETERMINATION FORM (INTERIM)
NAVIGABLE WATERS PROTECTION RULE

I. ADMINISTRATIVE INFORMATION

Completion Date of Approved Jurisdictional Determination (AJD): 12-MAR-2021
ORM Number: MVR-2020-01802-AM
Associated JDs: N/A or ORM numbers and identifiers (e.g. HQS-2020-00001-MSW-MITSITE)
Review Area Location¹:
State/Territory: IA City: County/Parish/Borough: Polk County
Center Coordinates of Review Area: Latitude 41.541298 Longitude -93.785912

II. FINDINGS

A. Summary: Check all that apply. At least one box from the following list **MUST** be selected. Complete the corresponding sections/tables and summarize data sources.

- The review area is comprised entirely of dry land (i.e., there are no waters or water features, including wetlands, of any kind in the entire review area). Rationale: N/A or describe rationale.
- There are “navigable waters of the United States” within Rivers and Harbors Act jurisdiction within the review area (complete table in section II.B).
- There are “waters of the United States” within Clean Water Act jurisdiction within the review area (complete appropriate tables in section II.C).
- There are waters or water features excluded from Clean Water Act jurisdiction within the review area (complete table in section II.D).

B. Rivers and Harbors Act of 1899 Section 10 (§ 10)²

§ 10 Name	§ 10 Size	§ 10 Criteria	Rationale for § 10 Determination
N/A	N/A	N/A	N/A

C. Clean Water Act Section 404

Territorial Seas and Traditional Navigable Waters ((a)(1) waters)³

(a)(1) Name	(a)(1) Size	(a)(1) Criteria	Rationale for (a)(1) Determination
N/A	N/A	N/A	N/A

Tributaries ((a)(2) waters):

(a)(2) Name	(a)(2) Size	(a)(2) Criteria	Rationale for (a)(2) Determination
N/A	N/A	N/A	N/A

Lakes and ponds, and impoundments of jurisdictional waters ((a)(3) waters):

(a)(3) Name	(a)(3) Size	(a)(3) Criteria	Rationale for (a)(3) Determination
N/A	N/A	N/A	N/A

Adjacent wetlands ((a)(4) waters):

(a)(4) Name	(a)(4) Size	(a)(4) Criteria	Rationale for (a)(4) Determination
N/A	N/A	N/A	N/A

¹ Map(s)/Figure(s) are attached to the AJD provided to the requestor.

² If the navigable water is not subject to the ebb and flow of the tide and included on the District's list of Rivers and Harbors Act Section 10 navigable waters list, do NOT use this document to make the determination. The District must continue to follow the procedure outlined in 33 CFR part 329.14 to make a Rivers and Harbors Act Section 10 navigability determination.

³ A stand-alone TNW determination is completed independently of a request for an AJD. A stand-alone TNW determination is conducted for a specific segment of river or stream or other type of waterbody, such as a lake, where independent upstream or downstream limits or lake borders are established. A stand-alone TNW determination should be completed following applicable guidance and should NOT be documented on the AJD form.

⁴ Some excluded waters, such as (b)(2) and (b)(4), may not be specifically identified on the AJD form unless a requestor specifically asks a Corps district to do so. Corps Districts may, in case-by-case instances, choose to identify some or all of these waters within the review area.

⁵ Because of the broad nature of the (b)(1) exclusion and in an effort to collect data on specific types of waters that would be covered by the (b)(1) exclusion, four sub-categories of (b)(1) exclusions were administratively created for the purposes of the AJD Form. These four sub-categories are not new exclusions, but are simply administrative distinctions and remain (b)(1) exclusions as defined by the NWPR.



U.S. ARMY CORPS OF ENGINEERS
REGULATORY PROGRAM
APPROVED JURISDICTIONAL DETERMINATION FORM (INTERIM)
NAVIGABLE WATERS PROTECTION RULE

D. Excluded Waters or Features

Excluded waters ((b)(1) – (b)(12))⁴:

Exclusion Name	Exclusion Size	Exclusion ⁵	Rationale for Exclusion Determination
DF-1	130 feet	(b)(10) Stormwater control feature constructed or excavated in upland or in a non-jurisdictional water to convey, treat, infiltrate, or store stormwater runoff	Stormwater drainage ditches, constructed in uplands, are not regulated under the NWPR
DF-2	380 feet	(b)(10) Stormwater control feature constructed or excavated in upland or in a non-jurisdictional water to convey, treat, infiltrate, or store stormwater runoff	Stormwater drainage ditches, constructed in uplands, are not regulated under the NWPR
DF-3	40 feet	(b)(3) Ephemeral feature, including an ephemeral stream, swale, gully, rill, or pool	This ephemeral feature flows into DF-2, a stormwater drainage ditch
WL-1	0.23 acres	(b)(1) Non-adjacent wetland	This wetland does not directly/indirectly connect to an (a)(1-3) water.

III. SUPPORTING INFORMATION

A. Select/enter all resources that were used to aid in this determination and attach data/maps to this document and/or references/citations in the administrative record, as appropriate.

Information submitted by, or on behalf of, the applicant/consultant: *JD Application and Delineation,*

This information *is* sufficient for purposes of this AJD.

Rationale: *The Corps concurs with the submitted delineation.*

Data sheets prepared by the Corps: *Title(s) and/or date(s).*

Photographs: *Regulatory Viewer with Aerial, LIDAR, and Hillshade layers, March 2021*

Corps Site visit(s) conducted on: *Date(s).*

Previous Jurisdictional Determinations (AJDs or PJDs): *ORM Number(s) and date(s).*

Antecedent Precipitation Tool: *provide detailed discussion in Section III.B.*

USDA NRCS Soil Survey: *Websoil Survey, March 2021*

USFWS NWI maps: *Regulatory Viewer with NWI layer, March 2021*

USGS topographic maps: *Regulatory Viewer with topo layer, March 2021*

Other data sources used to aid in this determination:

Data Source (select)	Name and/or date and other relevant information
USGS Sources	Regulatory Viewer with NHD layer, March 2021
USDA Sources	N/A.
NOAA Sources	N/A.
USACE Sources	N/A.
State/Local/Tribal Sources	N/A.
Other Sources	N/A.

¹ Map(s)/Figure(s) are attached to the AJD provided to the requestor.

² If the navigable water is not subject to the ebb and flow of the tide and included on the District's list of Rivers and Harbors Act Section 10 navigable waters list, do NOT use this document to make the determination. The District must continue to follow the procedure outlined in 33 CFR part 329.14 to make a Rivers and Harbors Act Section 10 navigability determination.

³ A stand-alone TNW determination is completed independently of a request for an AJD. A stand-alone TNW determination is conducted for a specific segment of river or stream or other type of waterbody, such as a lake, where independent upstream or downstream limits or lake borders are established. A stand-alone TNW determination should be completed following applicable guidance and should NOT be documented on the AJD form.

⁴ Some excluded waters, such as (b)(2) and (b)(4), may not be specifically identified on the AJD form unless a requestor specifically asks a Corps district to do so. Corps Districts may, in case-by-case instances, choose to identify some or all of these waters within the review area.

⁵ Because of the broad nature of the (b)(1) exclusion and in an effort to collect data on specific types of waters that would be covered by the (b)(1) exclusion, four sub-categories of (b)(1) exclusions were administratively created for the purposes of the AJD Form. These four sub-categories are not new exclusions, but are simply administrative distinctions and remain (b)(1) exclusions as defined by the NWPR.



U.S. ARMY CORPS OF ENGINEERS
REGULATORY PROGRAM
APPROVED JURISDICTIONAL DETERMINATION FORM (INTERIM)
NAVIGABLE WATERS PROTECTION RULE

- B. Typical year assessment(s):** The ATP was run for the date the delineation was completed and the data shows that this area is in normal conditions.
- C. Additional comments to support AJD:** This site is along an existing roadway. The only waters on site are ephemeral streams, stormwater drainage ditches, and non-adjacent wetlands. There is no connection to any (a)(1-3) waters and this site is not in direct proximity to any (a)(1-3) waters.

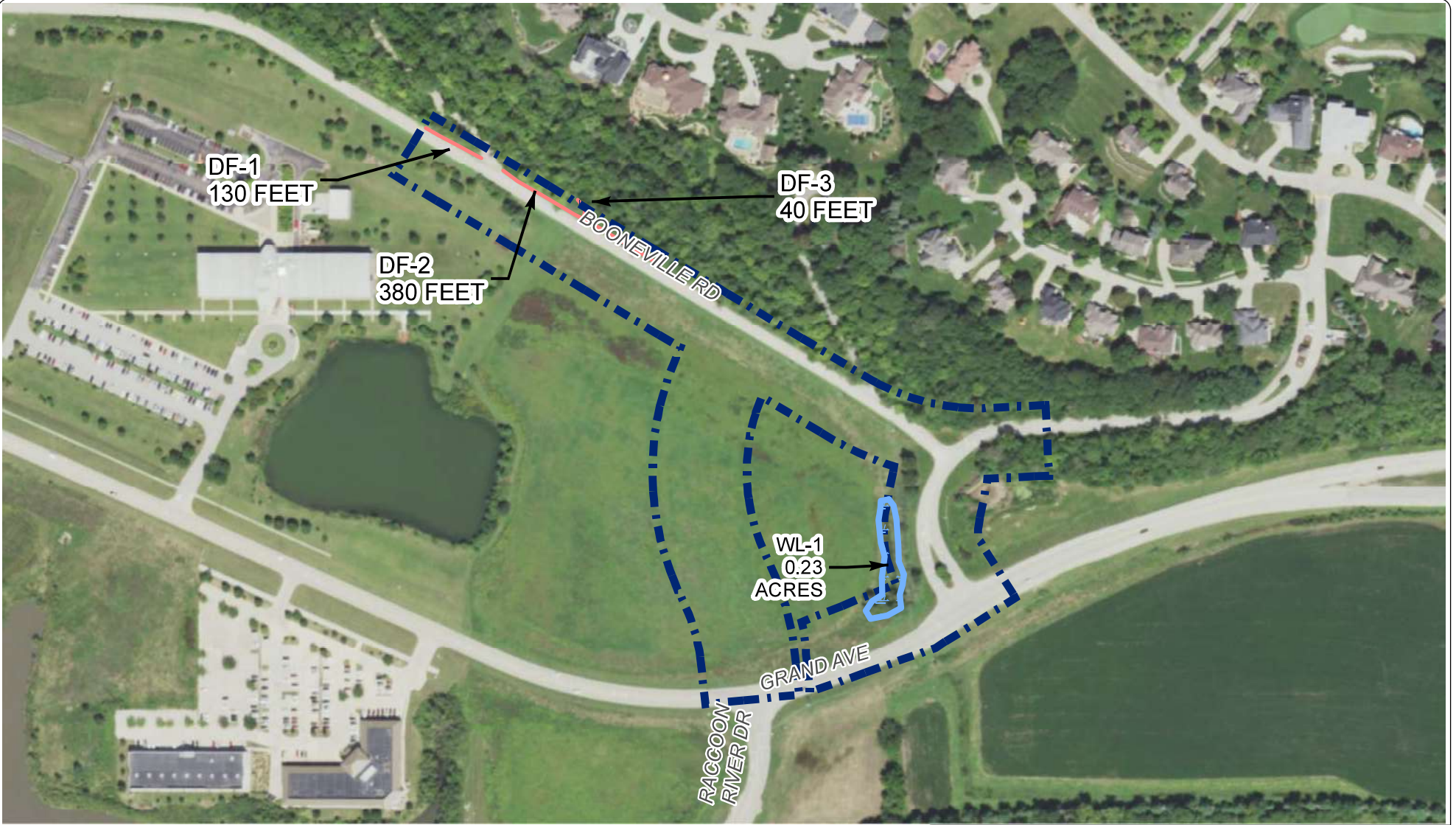
¹ Map(s)/Figure(s) are attached to the AJD provided to the requestor.

² If the navigable water is not subject to the ebb and flow of the tide or included on the District's list of Rivers and Harbors Act Section 10 navigable waters list, do NOT use this document to make the determination. The District must continue to follow the procedure outlined in 33 CFR part 329.14 to make a Rivers and Harbors Act Section 10 navigability determination.

³ A stand-alone TNW determination is completed independently of a request for an AJD. A stand-alone TNW determination is conducted for a specific segment of river or stream or other type of waterbody, such as a lake, where independent upstream or downstream limits or lake borders are established. A stand-alone TNW determination should be completed following applicable guidance and should NOT be documented on the AJD form.

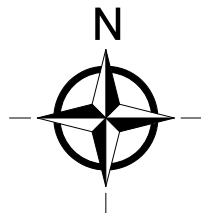
⁴ Some excluded waters, such as (b)(2) and (b)(4), may not be specifically identified on the AJD form unless a requestor specifically asks a Corps district to do so. Corps Districts may, in case-by-case instances, choose to identify some or all of these waters within the review area.

⁵ Because of the broad nature of the (b)(1) exclusion and in an effort to collect data on specific types of waters that would be covered by the (b)(1) exclusion, four sub-categories of (b)(1) exclusions were administratively created for the purposes of the AJD Form. These four sub-categories are not new exclusions, but are simply administrative distinctions and remain (b)(1) exclusions as defined by the NWPR.



LEGEND




- BOUNDARY OF ASSESSED AREA
- WETLAND
- DRAINAGE FEATURE

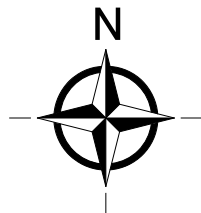


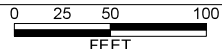

WETLAND DELINEATION MAP		
WEST GRAND BUSINESS PARK BOONEVILLE ROAD TO GRAND AVENUE WEST DES MOINES, IOWA		
	PROJECT ID. #: 20K014.00	
DATE: 12/21/2020		FIGURE NO.
PREPARED BY: KRG		5
CHECKED BY: ESM		

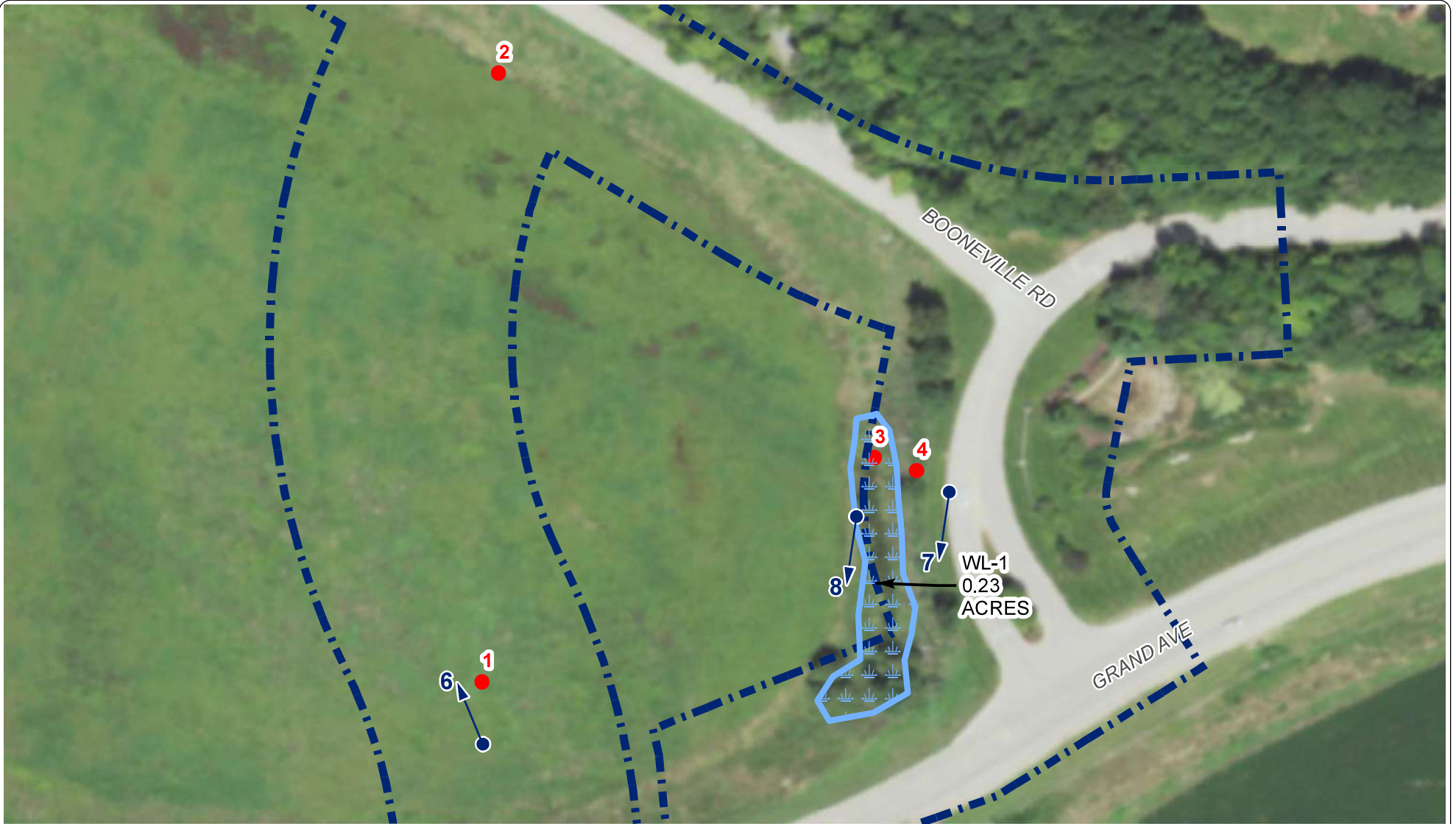


LEGEND





-  BOUNDARY OF ASSESSED AREA
-  DRAINAGE FEATURE
-  PHOTO LOCATION



WETLAND DELINEATION MAP	
WEST GRAND BUSINESS PARK BOONEVILLE ROAD TO GRAND AVENUE WEST DES MOINES, IOWA	
	PROJECT ID. #: 20K014.00
DATE: 12/21/2020	 Foth <small>Foth Infrastructure & Environment, LLC</small>
PREPARED BY: KRG	
CHECKED BY: ESM	
FIGURE NO. 5A	



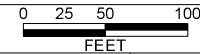
LEGEND

-  BOUNDARY OF ASSESSED AREA
-  WETLAND
-  DATA POINT
-  PHOTO LOCATION



WETLAND DELINEATION MAP

WEST GRAND BUSINESS PARK
BOONEVILLE ROAD TO GRAND AVENUE
WEST DES MOINES, IOWA



PROJECT ID. #: 20K014.00

DATE: 12/21/2020

PREPARED BY: KRG

CHECKED BY: ESM



FIGURE NO.
5B