



U.S. ARMY CORPS OF ENGINEERS
REGULATORY PROGRAM
APPROVED JURISDICTIONAL DETERMINATION FORM (INTERIM)
NAVIGABLE WATERS PROTECTION RULE

I. ADMINISTRATIVE INFORMATION

Completion Date of Approved Jurisdictional Determination (AJD): 30-MAR-2021
ORM Number: MVR-2021-00399-JN
Associated JDs: N/A or ORM numbers and identifiers (e.g. HQS-2020-00001-MSW-MITSITE)
Review Area Location¹:
State/Territory: IA City: County/Parish/Borough: Boone County
Center Coordinates of Review Area: Latitude 42.0713 Longitude -93.9002

II. FINDINGS

A. Summary: Check all that apply. At least one box from the following list **MUST** be selected. Complete the corresponding sections/tables and summarize data sources.

- The review area is comprised entirely of dry land (i.e., there are no waters or water features, including wetlands, of any kind in the entire review area). Rationale: Home is being built in uplands.
- There are “navigable waters of the United States” within Rivers and Harbors Act jurisdiction within the review area (complete table in section II.B).
- There are “waters of the United States” within Clean Water Act jurisdiction within the review area (complete appropriate tables in section II.C).
- There are waters or water features excluded from Clean Water Act jurisdiction within the review area (complete table in section II.D).

B. Rivers and Harbors Act of 1899 Section 10 (§ 10)²

§ 10 Name	§ 10 Size	§ 10 Criteria	Rationale for § 10 Determination
N/A	N/A	N/A	N/A

C. Clean Water Act Section 404

Territorial Seas and Traditional Navigable Waters ((a)(1) waters)³

(a)(1) Name	(a)(1) Size	(a)(1) Criteria	Rationale for (a)(1) Determination
N/A	N/A	N/A	N/A

Tributaries ((a)(2) waters):

(a)(2) Name	(a)(2) Size	(a)(2) Criteria	Rationale for (a)(2) Determination
N/A	N/A	N/A	N/A

Lakes and ponds, and impoundments of jurisdictional waters ((a)(3) waters):

(a)(3) Name	(a)(3) Size	(a)(3) Criteria	Rationale for (a)(3) Determination
N/A	N/A	N/A	N/A

Adjacent wetlands ((a)(4) waters):

(a)(4) Name	(a)(4) Size	(a)(4) Criteria	Rationale for (a)(4) Determination

¹ Map(s)/Figure(s) are attached to the AJD provided to the requestor.

² If the navigable water is not subject to the ebb and flow of the tide or included on the District’s list of Rivers and Harbors Act Section 10 navigable waters list, do NOT use this document to make the determination. The District must continue to follow the procedure outlined in 33 CFR part 329.14 to make a Rivers and Harbors Act Section 10 navigability determination.

³ A stand-alone TNW determination is completed independently of a request for an AJD. A stand-alone TNW determination is conducted for a specific segment of river or stream or other type of waterbody, such as a lake, where independent upstream or downstream limits or lake borders are established. A stand-alone TNW determination should be completed following applicable guidance and should NOT be documented on the AJD form.

⁴ Some excluded waters, such as (b)(2) and (b)(4), may not be specifically identified on the AJD form unless a requestor specifically asks a Corps district to do so. Corps Districts may, in case-by-case instances, choose to identify some or all of these waters within the review area.

⁵ Because of the broad nature of the (b)(1) exclusion and in an effort to collect data on specific types of waters that would be covered by the (b)(1) exclusion, four sub-categories of (b)(1) exclusions were administratively created for the purposes of the AJD Form. These four sub-categories are not new exclusions, but are simply administrative distinctions and remain (b)(1) exclusions as defined by the NWPR.



U.S. ARMY CORPS OF ENGINEERS
REGULATORY PROGRAM
APPROVED JURISDICTIONAL DETERMINATION FORM (INTERIM)
NAVIGABLE WATERS PROTECTION RULE

N/A	N/A	N/A	N/A
-----	-----	-----	-----

D. Excluded Waters or Features

Excluded waters ((b)(1) – (b)(12))⁴:

Exclusion Name	Exclusion Size	Exclusion ⁵	Rationale for Exclusion Determination
N/A	N/A	N/A	N/A

III. SUPPORTING INFORMATION

A. Select/enter all resources that were used to aid in this determination and attach data/maps to this document and/or references/citations in the administrative record, as appropriate.

Information submitted by, or on behalf of, the applicant/consultant: *48891_JointApplication 3/22/21.*

This information *(is)* sufficient for purposes of this AJD.

Rationale: *N/A.*

Data sheets prepared by the Corps: *Title(s) and/or date(s).*

Photographs: *1950, 2017 and Wetlands, LiDAR from Corps Reg Viewer. 3/29/21*

Corps Site visit(s) conducted on: *Date(s).*

Previous Jurisdictional Determinations (AJDs or PJDs): *ORM Number(s) and date(s).*

Antecedent Precipitation Tool: *provide detailed discussion in Section III.B.*

USDA NRCS Soil Survey: *Title(s) and/or date(s).*

USFWS NWI maps: *Title(s) and/or date(s).*

USGS topographic maps: *Title(s) and/or date(s).*

Other data sources used to aid in this determination:

Data Source (select)	Name and/or date and other relevant information
USGS Sources	N/A.
USDA Sources	N/A.
NOAA Sources	N/A.
USACE Sources	N/A.
State/Local/Tribal Sources	N/A.
Other Sources	N/A.

B. Typical year assessment(s): *N/A*

C. Additional comments to support AJD: *Home is being built in uplands. Site was reviewed by aerial photos and no wetland or WOTUS in the entire area.*

¹ Map(s)/Figure(s) are attached to the AJD provided to the requestor.

² If the navigable water is not subject to the ebb and flow of the tide or included on the District's list of Rivers and Harbors Act Section 10 navigable waters list, do NOT use this document to make the determination. The District must continue to follow the procedure outlined in 33 CFR part 329.14 to make a Rivers and Harbors Act Section 10 navigability determination.

³ A stand-alone TNW determination is completed independently of a request for an AJD. A stand-alone TNW determination is conducted for a specific segment of river or stream or other type of waterbody, such as a lake, where independent upstream or downstream limits or lake borders are established. A stand-alone TNW determination should be completed following applicable guidance and should NOT be documented on the AJD form.

⁴ Some excluded waters, such as (b)(2) and (b)(4), may not be specifically identified on the AJD form unless a requestor specifically asks a Corps district to do so. Corps Districts may, in case-by-case instances, choose to identify some or all of these waters within the review area.

⁵ Because of the broad nature of the (b)(1) exclusion and in an effort to collect data on specific types of waters that would be covered by the (b)(1) exclusion, four sub-categories of (b)(1) exclusions were administratively created for the purposes of the AJD Form. These four sub-categories are not new exclusions, but are simply administrative distinctions and remain (b)(1) exclusions as defined by the NWPR.

- Regulatory Viewer
- Regulatory Map
- Compliance Viewer
- IPaC
- I-Sites
- Mitigation Banking
- IL IAS

Rock Island District Regulatory Viewer



42.0713 -93.9002

Show search results for 42.0713 -93....

Map navigation controls: zoom in (+), zoom out (-), home, refresh.



Imagery and Lidar

Layers

- IA ortho 1930 (External Web GIS Service) ...
- IA ortho 1950 (External Web GIS Service) ...
- IA ortho 1960 (External Web GIS Service) ...
- IA ortho 1970 (External Web GIS Service) ...
- IA ortho 1980 (External Web GIS Service) ...
- IA ortho 1980 cir (External Web GIS Service) ...
- IA ortho 1990 (External Web GIS Service) ...
- IA ortho 2002 cir (External Web GIS Service) ...
- IA naip 2004 nc (External Web GIS Service) ...
- IA naip 2005 nc (External Web GIS Service) ...
- IA naip 2006 nc (External Web GIS Service) ...
- IA naip 2007 nc (External Web GIS Service) ...

600ft

-93.912 42.074 Degrees

Regulatory Viewer

Regulatory Map

Compliance Viewer

IPaC

I-Sites

Mitigation Banking

IL IAS



Rock Island District Regulatory Viewer



42.0713 -93.9002

Show search results for 42.0713 -93....



Layer List

- USACE_Boundaries - USACE Districts
- MVR Counties
- Roads
- Localities for Reg Viewer
- PLSS
- PADUS (External Web GIS Service)
- Real Estate for Reg Viewer
- National Hydrography Dataset (NHD) (External Web GIS Service)
- Watersheds (External Web GIS Service)
- Section 10 Waters
- National Wetlands Inventory (External Web GIS Service)
- USA Soils Hydric Class (External Web GIS Service)
- USA Soils Map Units (External Web GIS Service)

600ft

-93.906 42.075 Degrees

© 2023 DNR, Esri Canada, Esri, HERE, Garmin, INCREMENT P, Intermap

Regulatory Viewer

Regulatory Map

Compliance Viewer

IPaC

I-Sites

Mitigation Banking

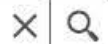
IL IAS



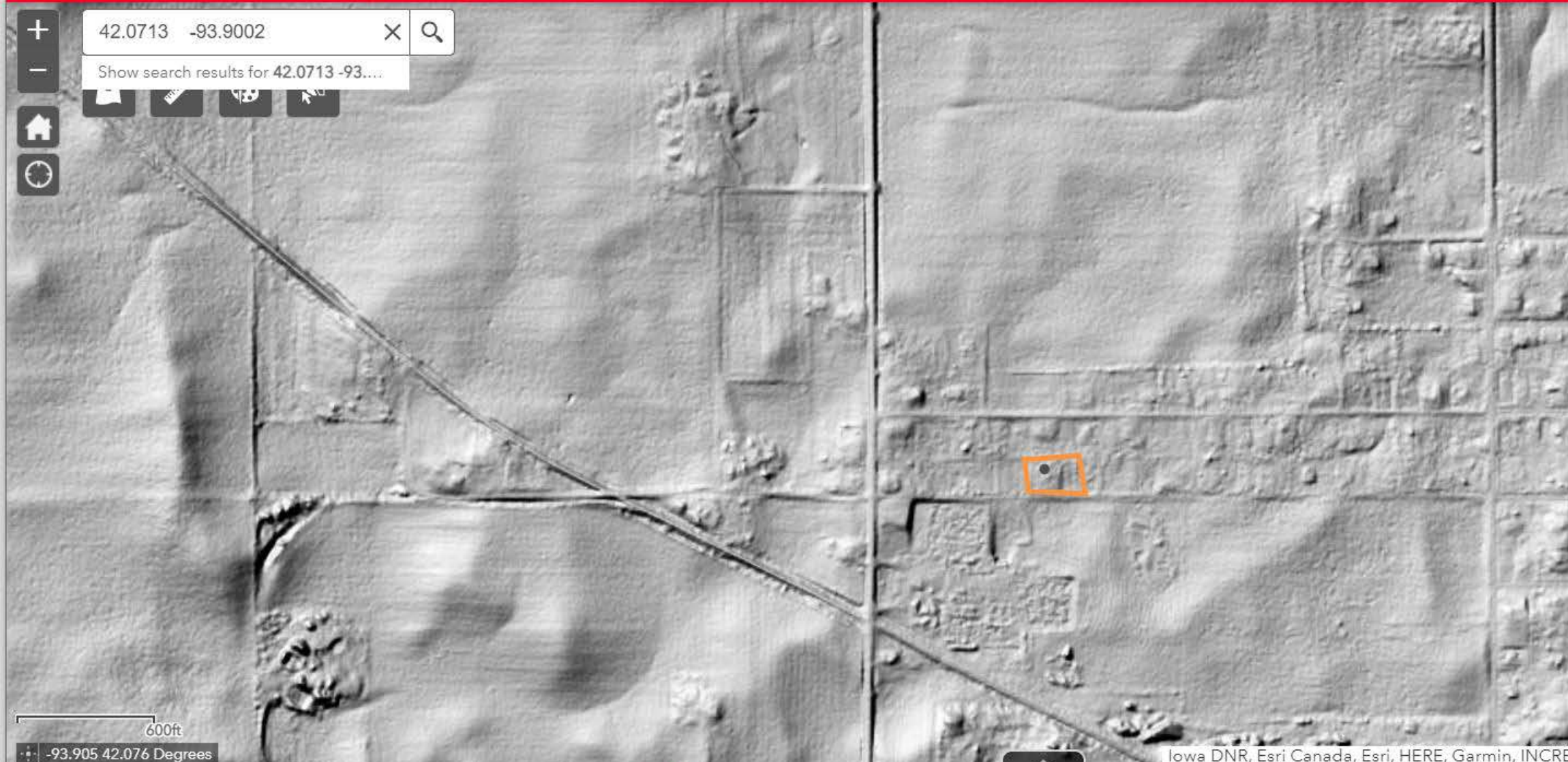
Rock Island District Regulatory Viewer



42.0713 -93.9002



Show search results for 42.0713 -93....



Imagery and Lidar

- IA naip 2013 nc (External Web GIS Service) ...
- IA naip 2014 cir (External Web GIS Service) ...
- IA naip 2014 nc (External Web GIS Service) ...
- IA naip 2017 cir (External Web GIS Service) ...
- IA naip 2017 nc (External Web GIS Service) ...
- MVR_NAIP_2017 ...
- Photo Dates (External Web GIS Service) ...
- MVR Quad Maps ...
- IA LiDAR DEM 1m NAVD88 ft ...
- IA LiDAR DEM 1m hillshade ...
- IA LiDAR DEM 3m NAVD88 ft ...
- IA LiDAR DEM 3m hillshade ...
- IL_LiDAR_DEM_1m_NAVD88_ft ...

600ft
-93.905 42.076 Degrees