



U.S. ARMY CORPS OF ENGINEERS  
REGULATORY PROGRAM  
APPROVED JURISDICTIONAL DETERMINATION FORM (INTERIM)  
NAVIGABLE WATERS PROTECTION RULE

**I. ADMINISTRATIVE INFORMATION**

Completion Date of Approved Jurisdictional Determination (AJD): 13-APR-2021  
ORM Number: MVR-2021-00477-JN  
Associated JDs: N/A or ORM numbers and identifiers (e.g. HQS-2020-00001-MSW-MITSITE)  
Review Area Location<sup>1</sup>:  
State/Territory: IA City: County/Parish/Borough: Dubuque County  
Center Coordinates of Review Area: Latitude 42.5762 Longitude -90.6904

**II. FINDINGS**

**A. Summary:** Check all that apply. At least one box from the following list **MUST** be selected. Complete the corresponding sections/tables and summarize data sources.

- The review area is comprised entirely of dry land (i.e., there are no waters or water features, including wetlands, of any kind in the entire review area). Rationale: After review the land is dry land.
- There are “navigable waters of the United States” within Rivers and Harbors Act jurisdiction within the review area (complete table in section II.B).
- There are “waters of the United States” within Clean Water Act jurisdiction within the review area (complete appropriate tables in section II.C).
- There are waters or water features excluded from Clean Water Act jurisdiction within the review area (complete table in section II.D).

**B. Rivers and Harbors Act of 1899 Section 10 (§ 10)<sup>2</sup>**

§ 10 Name	§ 10 Size	§ 10 Criteria	Rationale for § 10 Determination
N/A	N/A	N/A	N/A

**C. Clean Water Act Section 404**

Territorial Seas and Traditional Navigable Waters ((a)(1) waters)<sup>3</sup>

(a)(1) Name	(a)(1) Size	(a)(1) Criteria	Rationale for (a)(1) Determination
N/A	N/A	N/A	N/A

Tributaries ((a)(2) waters):

(a)(2) Name	(a)(2) Size	(a)(2) Criteria	Rationale for (a)(2) Determination
N/A	N/A	N/A	N/A

Lakes and ponds, and impoundments of jurisdictional waters ((a)(3) waters):

(a)(3) Name	(a)(3) Size	(a)(3) Criteria	Rationale for (a)(3) Determination
N/A	N/A	N/A	N/A

Adjacent wetlands ((a)(4) waters):

(a)(4) Name	(a)(4) Size	(a)(4) Criteria	Rationale for (a)(4) Determination

<sup>1</sup> Map(s)/Figure(s) are attached to the AJD provided to the requestor.

<sup>2</sup> If the navigable water is not subject to the ebb and flow of the tide or included on the District’s list of Rivers and Harbors Act Section 10 navigable waters list, do NOT use this document to make the determination. The District must continue to follow the procedure outlined in 33 CFR part 329.14 to make a Rivers and Harbors Act Section 10 navigability determination.

<sup>3</sup> A stand-alone TNW determination is completed independently of a request for an AJD. A stand-alone TNW determination is conducted for a specific segment of river or stream or other type of waterbody, such as a lake, where independent upstream or downstream limits or lake borders are established. A stand-alone TNW determination should be completed following applicable guidance and should NOT be documented on the AJD form.

<sup>4</sup> Some excluded waters, such as (b)(2) and (b)(4), may not be specifically identified on the AJD form unless a requestor specifically asks a Corps district to do so. Corps Districts may, in case-by-case instances, choose to identify some or all of these waters within the review area.

<sup>5</sup> Because of the broad nature of the (b)(1) exclusion and in an effort to collect data on specific types of waters that would be covered by the (b)(1) exclusion, four sub-categories of (b)(1) exclusions were administratively created for the purposes of the AJD Form. These four sub-categories are not new exclusions, but are simply administrative distinctions and remain (b)(1) exclusions as defined by the NWPR.



U.S. ARMY CORPS OF ENGINEERS  
REGULATORY PROGRAM  
APPROVED JURISDICTIONAL DETERMINATION FORM (INTERIM)  
NAVIGABLE WATERS PROTECTION RULE

N/A	N/A	N/A	N/A
-----	-----	-----	-----

**D. Excluded Waters or Features**

Excluded waters ((b)(1) – (b)(12))<sup>4</sup>:

Exclusion Name	Exclusion Size	Exclusion <sup>5</sup>	Rationale for Exclusion Determination
N/A	N/A	N/A	N/A

**III. SUPPORTING INFORMATION**

**A. Select/enter all resources** that were used to aid in this determination and attach data/maps to this document and/or references/citations in the administrative record, as appropriate.

- Information submitted by, or on behalf of, the applicant/consultant:  
48984\_JointApplication.pdf; Garage Site 2021-03-22 12\_06\_04-Dubuque.pdf; 22 march 2021  
This information (*is*) sufficient for purposes of this AJD.  
Rationale: *The information showed the area of the project.*
- Data sheets prepared by the Corps: *Title(s) and/or date(s).*
- Photographs: *1950.pdf; 2017.pdf; LiDAR.pdf; 4/13/2021*
- Corps Site visit(s) conducted on: *Date(s).*
- Previous Jurisdictional Determinations (AJDs or PJDs): *ORM Number(s) and date(s).*
- Antecedent Precipitation Tool: *provide detailed discussion in Section III.B.*
- USDA NRCS Soil Survey: *Title(s) and/or date(s).*
- USFWS NWI maps: *USFWS Wetlands Map.pdf 4/13/2021*
- USGS topographic maps: *Title(s) and/or date(s).*

**Other data sources used to aid in this determination:**

Data Source (select)	Name and/or date and other relevant information
USGS Sources	N/A.
USDA Sources	N/A.
NOAA Sources	N/A.
USACE Sources	N/A.
State/Local/Tribal Sources	N/A.
Other Sources	N/A.

**B. Typical year assessment(s):** N/A

**C. Additional comments to support AJD:** After review of project the garage is being built in uplands.

<sup>1</sup> Map(s)/Figure(s) are attached to the AJD provided to the requestor.

<sup>2</sup> If the navigable water is not subject to the ebb and flow of the tide or included on the District's list of Rivers and Harbors Act Section 10 navigable waters list, do NOT use this document to make the determination. The District must continue to follow the procedure outlined in 33 CFR part 329.14 to make a Rivers and Harbors Act Section 10 navigability determination.

<sup>3</sup> A stand-alone TNW determination is completed independently of a request for an AJD. A stand-alone TNW determination is conducted for a specific segment of river or stream or other type of waterbody, such as a lake, where independent upstream or downstream limits or lake borders are established. A stand-alone TNW determination should be completed following applicable guidance and should NOT be documented on the AJD form.

<sup>4</sup> Some excluded waters, such as (b)(2) and (b)(4), may not be specifically identified on the AJD form unless a requestor specifically asks a Corps district to do so. Corps Districts may, in case-by-case instances, choose to identify some or all of these waters within the review area.

<sup>5</sup> Because of the broad nature of the (b)(1) exclusion and in an effort to collect data on specific types of waters that would be covered by the (b)(1) exclusion, four sub-categories of (b)(1) exclusions were administratively created for the purposes of the AJD Form. These four sub-categories are not new exclusions, but are simply administrative distinctions and remain (b)(1) exclusions as defined by the NWPR.

**John Deere  
Marsh**

19258

Riverside Rd

Riverside Rd

Riverside Rd

**John Deere  
Marsh**

**N**





Regulatory Viewer

Regulatory Map

Compliance Viewer

IPaC

I-Sites

Mitigation Banking

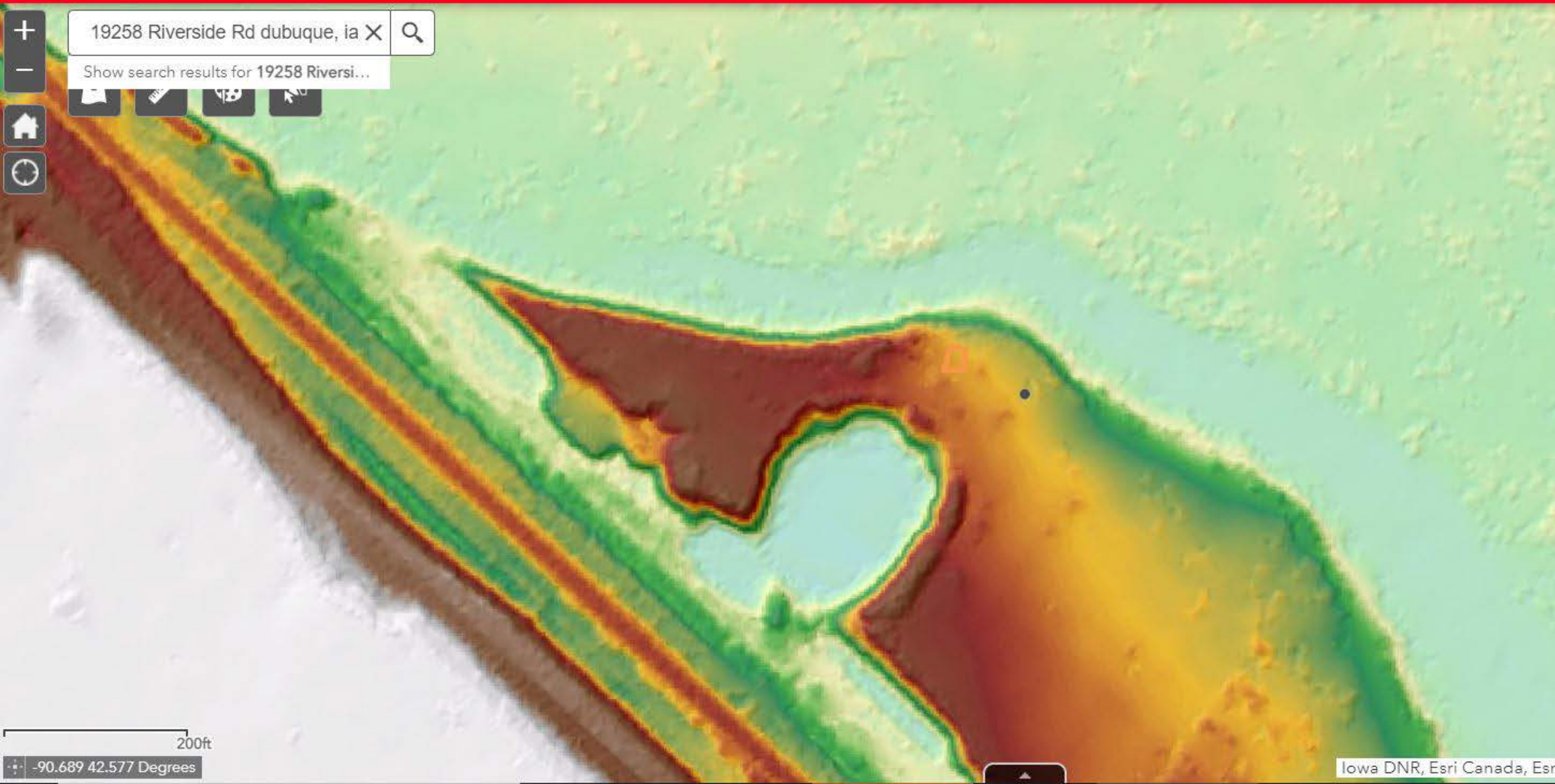
IL IAS

## Rock Island District Regulatory Viewer



19258 Riverside Rd dubuque, ia X

Show search results for 19258 Riversi...



### Imagery and Lidar

- MVR\_NAIP\_2017
- Photo Dates (External Web GIS Service)
- MVR Quad Maps
- IA LiDAR DEM 1m NAVD88 ft
- IA LiDAR DEM 1m hillshade
- IA LiDAR DEM 3m NAVD88 ft
- IA LiDAR DEM 3m hillshade
- IL\_LiDAR\_DEM\_1m\_NAVD88\_ft
- IL\_LiDAR\_DEM\_1m\_hillshade
- IL NAIP 2004 (External Web GIS Service)
- IL NAIP 2005 (External Web GIS Service)
- IL NAIP 2006 (External Web GIS Service)
- IL NAIP 2007 (External Web GIS Service)
- IL NAIP 2010 (External Web GIS Service)

200ft

-90.689 42.577 Degrees

Iowa DNR, Esri Canada, Esri,





BASEMAPS >

MAP LAYERS >

- Wetlands 1 ?
- Riparian 1 ?
- Riparian Mapping Areas 1 ?
- Data Source 1 ?
  - Source Type
  - Image Scale
  - Image Year
- Areas of Interest ?
- FWS Managed Lands 1 ?
- Historic Wetland Data 1 ?

**Measure**

Measure  
 Measure  
 Measure

Degrees ▾

---

**Measurement Result**

Latitude	Longitude
42.576843	-90.68831
42.575793	-90.689517

