



U.S. ARMY CORPS OF ENGINEERS
REGULATORY PROGRAM
APPROVED JURISDICTIONAL DETERMINATION FORM (INTERIM)
NAVIGABLE WATERS PROTECTION RULE

I. ADMINISTRATIVE INFORMATION

Completion Date of Approved Jurisdictional Determination (AJD): 09-JUN-2021

ORM Number: MVR-2021-00777-SD

Associated JDs: N/A)

Review Area Location¹:

State/Territory: IA City: Storm Lake County/Parish/Borough: Buena Vista County
Center Coordinates of Review Area: Latitude 42.62748 Longitude -95.236596

II. FINDINGS

A. Summary: Check all that apply. At least one box from the following list **MUST** be selected. Complete the corresponding sections/tables and summarize data sources.

- The review area is comprised entirely of dry land (i.e., there are no waters or water features, including wetlands, of any kind in the entire review area). Rationale: N/A or describe rationale.
- There are “navigable waters of the United States” within Rivers and Harbors Act jurisdiction within the review area (complete table in section II.B).
- There are “waters of the United States” within Clean Water Act jurisdiction within the review area (complete appropriate tables in section II.C).
- There are waters or water features excluded from Clean Water Act jurisdiction within the review area (complete table in section II.D).

B. Rivers and Harbors Act of 1899 Section 10 (§ 10)²

§ 10 Name	§ 10 Size	§ 10 Criteria	Rationale for § 10 Determination
N/A	N/A	N/A	N/A

C. Clean Water Act Section 404

Territorial Seas and Traditional Navigable Waters ((a)(1) waters)³

(a)(1) Name	(a)(1) Size	(a)(1) Criteria	Rationale for (a)(1) Determination
N/A	N/A	N/A	N/A

Tributaries ((a)(2) waters):

(a)(2) Name	(a)(2) Size	(a)(2) Criteria	Rationale for (a)(2) Determination
N/A	N/A	N/A	N/A

Lakes and ponds, and impoundments of jurisdictional waters ((a)(3) waters):

(a)(3) Name	(a)(3) Size	(a)(3) Criteria	Rationale for (a)(3) Determination
N/A	N/A	N/A	N/A

Adjacent wetlands ((a)(4) waters):

(a)(4) Name	(a)(4) Size	(a)(4) Criteria	Rationale for (a)(4) Determination
2021-0777	4.08 acres	(a)(4) Wetland abuts an (a)(1)-(a)(3) water	Delineated wetlands directly abut Storm Lake, which has several tributaries leading in/out. At least one of

¹ Map(s)/Figure(s) are attached to the AJD provided to the requestor.

² If the navigable water is not subject to the ebb and flow of the tide or included on the District’s list of Rivers and Harbors Act Section 10 navigable waters list, do NOT use this document to make the determination. The District must continue to follow the procedure outlined in 33 CFR part 329.14 to make a Rivers and Harbors Act Section 10 navigability determination.

³ A stand-alone TNW determination is completed independently of a request for an AJD. A stand-alone TNW determination is conducted for a specific segment of river or stream or other type of waterbody, such as a lake, where independent upstream or downstream limits or lake borders are established. A stand-alone TNW determination should be completed following applicable guidance and should NOT be documented on the AJD form.

⁴ Some excluded waters, such as (b)(2) and (b)(4), may not be specifically identified on the AJD form unless a requestor specifically asks a Corps district to do so. Corps Districts may, in case-by-case instances, choose to identify some or all of these waters within the review area.

⁵ Because of the broad nature of the (b)(1) exclusion and in an effort to collect data on specific types of waters that would be covered by the (b)(1) exclusion, four sub-categories of (b)(1) exclusions were administratively created for the purposes of the AJD Form. These four sub-categories are not new exclusions, but are simply administrative distinctions and remain (b)(1) exclusions as defined by the NWPR.



U.S. ARMY CORPS OF ENGINEERS
REGULATORY PROGRAM
APPROVED JURISDICTIONAL DETERMINATION FORM (INTERIM)
NAVIGABLE WATERS PROTECTION RULE

			which flows into the Raccoon River which is a direct tributary to the Traditionally Navigable Waterway Des Moines River.
--	--	--	--

D. Excluded Waters or Features

Excluded waters ((b)(1) – (b)(12))⁴:

Exclusion Name	Exclusion Size	Exclusion ⁵	Rationale for Exclusion Determination
N/A	N/A	N/A	N/A

III. SUPPORTING INFORMATION

A. Select/enter all resources that were used to aid in this determination and attach data/maps to this document and/or references/citations in the administrative record, as appropriate.

- Information submitted by, or on behalf of, the applicant/consultant: *Title(s) and date(s)*.
 - This information (*is*) sufficient for purposes of this AJD.
 - Rationale: *Wetlands delineated appear to be correct as the project area is of very low elevation directly adjacent to Storm Lake. National Wetlands Inventory also lists this area as emergent wetland.*
 - Data sheets prepared by the Corps: *Title(s) and/or date(s)*.
 - Photographs: (*Google Earth 2017, Lidar, Topographic*) *Title(s) and/or date(s)*.
 - Corps Site visit(s) conducted on: *Date(s)*.
 - Previous Jurisdictional Determinations (AJDs or PJDs): *ORM Number(s) and date(s)*.
 - Antecedent Precipitation Tool: *provide detailed discussion in Section III.B.*
 - USDA NRCS Soil Survey: *Title(s) and/or date(s)*.
 - USFWS NWI maps: *Title(s) and/or date(s)*.
 - USGS topographic maps: *Title(s) and/or date(s)*.

Other data sources used to aid in this determination:

Data Source (select)	Name and/or date and other relevant information
USGS Sources	N/A.
USDA Sources	N/A.
NOAA Sources	N/A.
USACE Sources	N/A.
State/Local/Tribal Sources	N/A.
Other Sources	N/A.

B. Typical year assessment(s): During the field delineation dates, the National Drought Monitor lists the project area (Buena Vista County, IA) as mostly within a Severe Drought. The remainder of the county is listed as Moderate Drought.

¹ Map(s)/Figure(s) are attached to the AJD provided to the requestor.

² If the navigable water is not subject to the ebb and flow of the tide or included on the District's list of Rivers and Harbors Act Section 10 navigable waters list, do NOT use this document to make the determination. The District must continue to follow the procedure outlined in 33 CFR part 329.14 to make a Rivers and Harbors Act Section 10 navigability determination.

³ A stand-alone TNW determination is completed independently of a request for an AJD. A stand-alone TNW determination is conducted for a specific segment of river or stream or other type of waterbody, such as a lake, where independent upstream or downstream limits or lake borders are established. A stand-alone TNW determination should be completed following applicable guidance and should NOT be documented on the AJD form.

⁴ Some excluded waters, such as (b)(2) and (b)(4), may not be specifically identified on the AJD form unless a requestor specifically asks a Corps district to do so. Corps Districts may, in case-by-case instances, choose to identify some or all of these waters within the review area.

⁵ Because of the broad nature of the (b)(1) exclusion and in an effort to collect data on specific types of waters that would be covered by the (b)(1) exclusion, four sub-categories of (b)(1) exclusions were administratively created for the purposes of the AJD Form. These four sub-categories are not new exclusions, but are simply administrative distinctions and remain (b)(1) exclusions as defined by the NWPR.



U.S. ARMY CORPS OF ENGINEERS
REGULATORY PROGRAM
APPROVED JURISDICTIONAL DETERMINATION FORM (INTERIM)
NAVIGABLE WATERS PROTECTION RULE

- C. Additional comments to support AJD:** Wetlands delineated appear to be correct as the project area is of very low elevation directly adjacent to Storm Lake. National Wetlands Inventory also lists this area as emergent wetland.

¹ Map(s)/Figure(s) are attached to the AJD provided to the requestor.

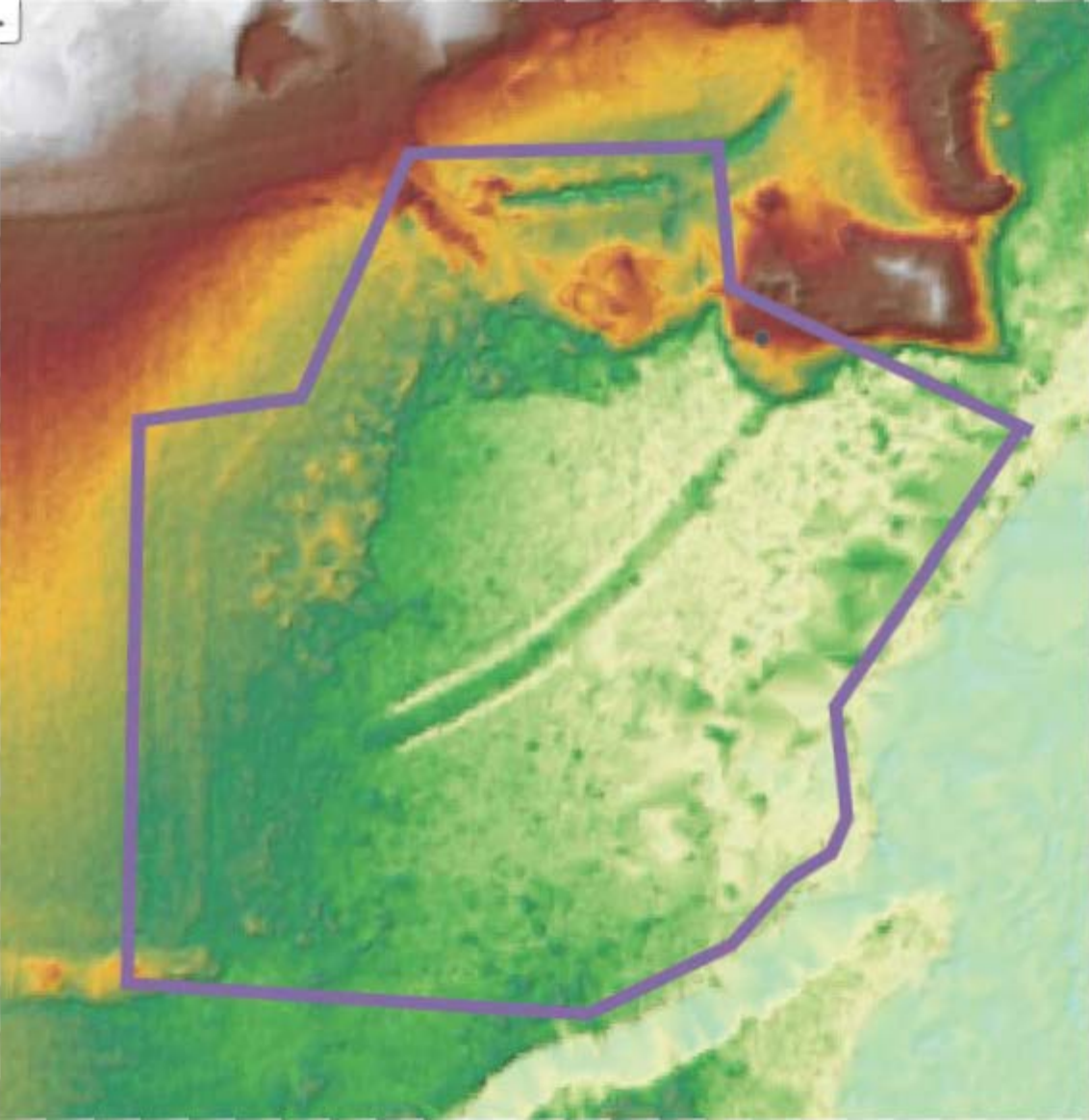
² If the navigable water is not subject to the ebb and flow of the tide or included on the District's list of Rivers and Harbors Act Section 10 navigable waters list, do NOT use this document to make the determination. The District must continue to follow the procedure outlined in 33 CFR part 329.14 to make a Rivers and Harbors Act Section 10 navigability determination.

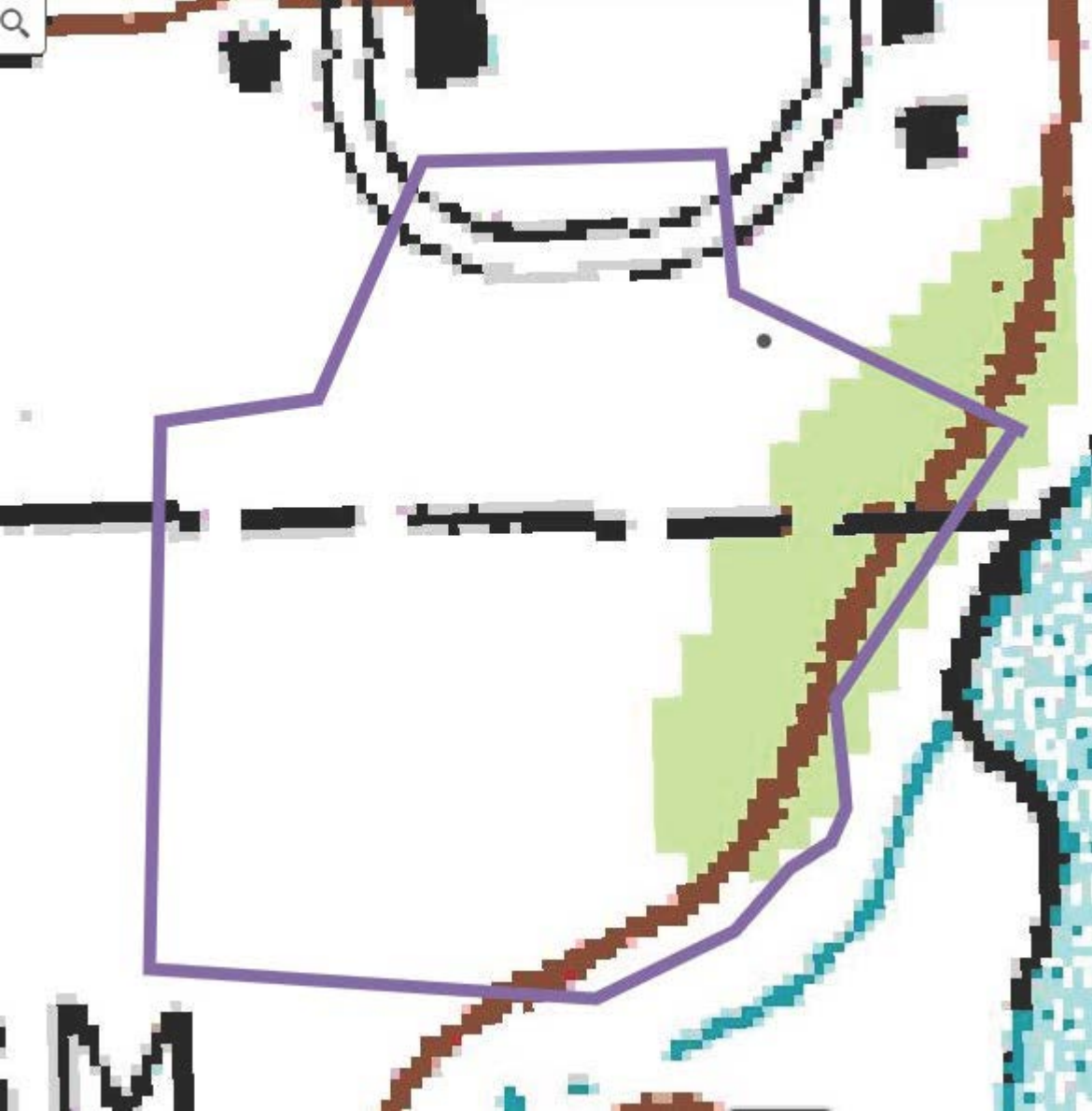
³ A stand-alone TNW determination is completed independently of a request for an AJD. A stand-alone TNW determination is conducted for a specific segment of river or stream or other type of waterbody, such as a lake, where independent upstream or downstream limits or lake borders are established. A stand-alone TNW determination should be completed following applicable guidance and should NOT be documented on the AJD form.

⁴ Some excluded waters, such as (b)(2) and (b)(4), may not be specifically identified on the AJD form unless a requestor specifically asks a Corps district to do so. Corps Districts may, in case-by-case instances, choose to identify some or all of these waters within the review area.

⁵ Because of the broad nature of the (b)(1) exclusion and in an effort to collect data on specific types of waters that would be covered by the (b)(1) exclusion, four sub-categories of (b)(1) exclusions were administratively created for the purposes of the AJD Form. These four sub-categories are not new exclusions, but are simply administrative distinctions and remain (b)(1) exclusions as defined by the NWPR.



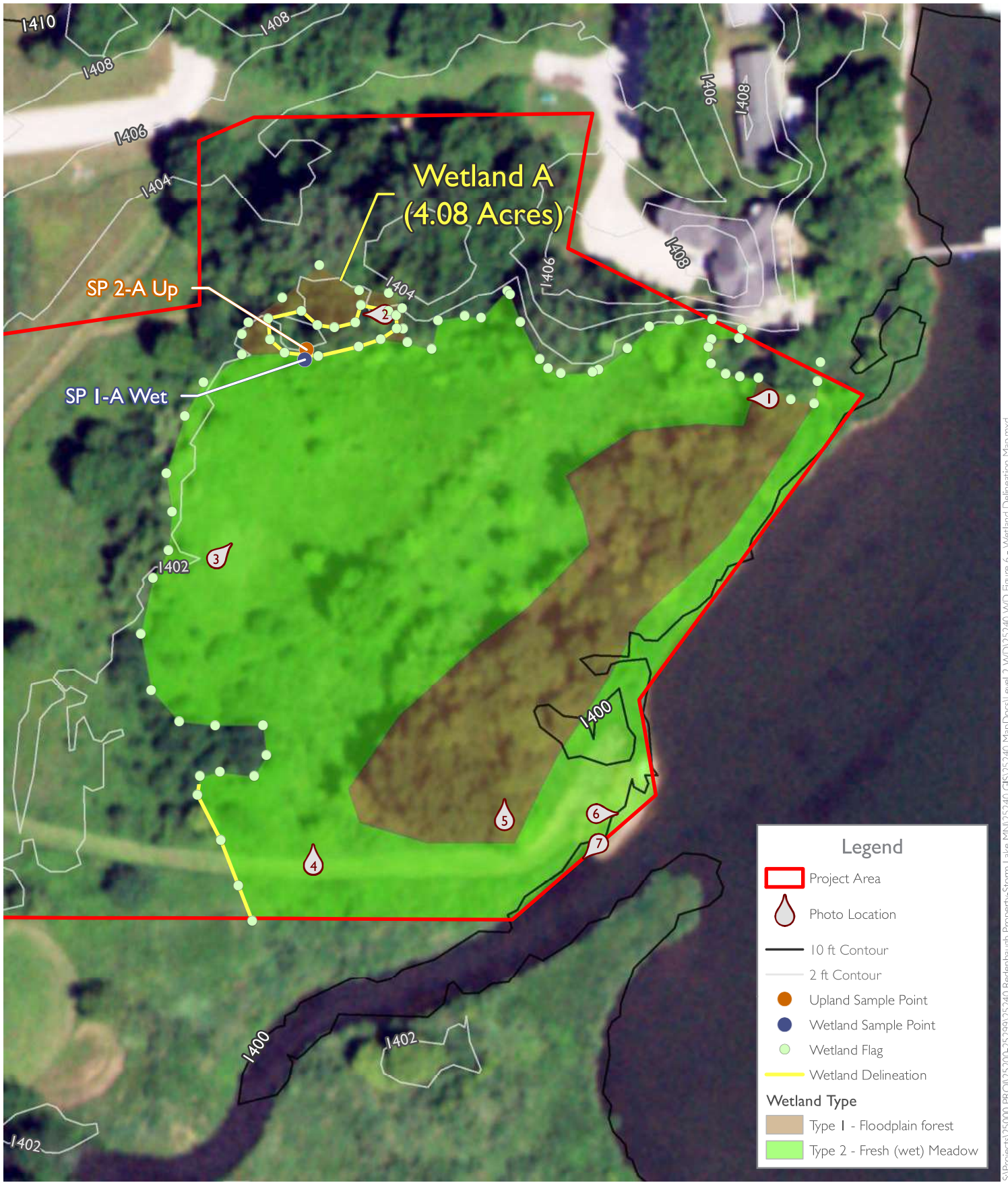






PEM1C

PSSTC



S:\Projects\25000-PROJ\25200-25299\25240 Redenbaugh Property-Storm Lake MN\25240 GIS\25240 MapDocs\Level 2 W\25240 WD Figure 6 - Wetland Delineation Map.mxd

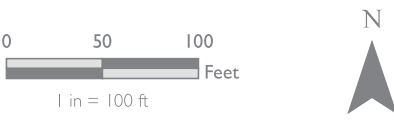


Figure 6
Wetland Delineation Map
Redenbaugh Property
 Storm Lake, Buena Vista County, Iowa

Source(s):
 Orthophoto (FSA, 2019)
 Wetland Delineation (ISG, 2021)
 Contours (Source, Year)

