

DRY LAND APPROVED JURISDICTIONAL DETERMINATION FORM¹
U.S. Army Corps of Engineers

This form should be completed by following the instructions provided in Section IV of the JD Form Instructional Guidebook.

SECTION I: BACKGROUND INFORMATION

A. REPORT COMPLETION DATE FOR APPROVED JURISDICTIONAL DETERMINATION (JD): October 28, 2021

B. DISTRICT OFFICE, FILE NAME, AND NUMBER: CEMVR-RD-2021-1511

C. PROJECT LOCATION AND BACKGROUND INFORMATION:

State: Iowa County/parish/borough: Benton City: Vinton
Center coordinates of site (lat/long in degree decimal format): Lat. 42.233725 °, Long. -92.021619 °
Universal Transverse Mercator: UTM Z 15 NAD 83

Name of nearest waterbody: Bear Creek
Name of watershed or Hydrologic Unit Code (HUC): 07080205

- Check if map/diagram of review area is available upon request.
 Check if other sites (e.g., offsite mitigation sites, disposal sites, etc...) are associated with this action and are recorded on a different JD form.

D. REVIEW PERFORMED FOR SITE EVALUATION (CHECK ALL THAT APPLY):

- Office (Desk) Determination. Date: October 28, 2021
 Field Determination. Date(s): [Click here to enter a date.](#)

SECTION II: SUMMARY OF FINDINGS

A. RHA SECTION 10 DETERMINATION OF JURISDICTION.

There are **no** “*navigable waters of the U.S.*” within Rivers and Harbors Act (RHA) jurisdiction (as defined by 33 CFR part 329) in the review area.

B. CWA SECTION 404 DETERMINATION OF JURISDICTION.

There are **no** “*waters of the U.S.*” within Clean Water Act (CWA) jurisdiction (as defined by 33 CFR part 328) in the review area.

SECTION III: DATA SOURCES.

A. SUPPORTING DATA. Data reviewed for JD (check all that apply - checked items shall be included in case file and, where checked and requested, appropriately reference sources below):

- Maps, plans, plots or plat submitted by or on behalf of the applicant/consultant: EOR Iowa Wetland Delineation “*Wetland Investigation Report for the Bright Sandpit Property, Wendling Quarries, Benton County, Iowa*” 9/27/2021, Figure 6 – Waters of the U.S. Map.
- Data sheets prepared/submitted by or on behalf of the applicant/consultant.
- Office concurs with data sheets/delineation report.
 Office does not concur with data sheets/delineation report.
- Data sheets prepared by the Corps: [Click here to enter text.](#)
- U.S. Geological Survey Hydrologic Atlas: [Click here to enter text.](#)
 USGS NHD data.
 USGS 8 and 12 digit HUC maps.
- U.S. Geological Survey map(s). Cite scale & quad name: Figure 2, USGS Topo Map, Winton, IA 24K
- USDA Natural Resources Conservation Service Soil Survey. Citation: Figure 3, Soils and National Wetland Inventory Map
- National wetlands inventory map(s). Cite name: Figure 3, Soils and National Wetland Inventory Map
- State/Local wetland inventory map(s): [Click here to enter text.](#)
- FEMA/FIRM maps: [Click here to enter text.](#)
- 100-year Floodplain Elevation is: [Click here to enter text.](#) (National Geodetic Vertical Datum of 1929)
- Photographs: Aerial (Name & Date): 2002, 2004, 2005, 2006, 2007, 2008, 2009, 2010, 2011, 2013, 2014, 2015, 2017, 2019 – Pages 26-39
 or Other (Name & Date): Pages 19-22 of EOR Delineation
- Previous determination(s). File no. and date of response letter: [Click here to enter text.](#)
- Applicable/supporting case law: [Click here to enter text.](#)
- Applicable/supporting scientific literature: [Click here to enter text.](#)
- Other information (please specify): Figure 4. Color Lidar Map

B. REQUIRED ADDITIONAL COMMENTS TO SUPPORT JD. EXPLAIN RATIONALE FOR DETERMINATION THAT THE REVIEW AREA ONLY INCLUDES DRY LAND: The wetland delineation supported the findings of no wetlands. All available data points, with the exception of one, supported non-hydrophytic vegetation communities. The single data point that supported hydric vegetation did not

¹ This form is for use only in recording approved JDs involving dry land. It extracts the relevant elements of the longer approved JD form in use since 2007 for aquatic areas and adds no new fields.

contain other indicators. Based on a review of aerial images supplied by the applicant there are also no aerial photo indicators to suggest that this CRP field contains wetlands.

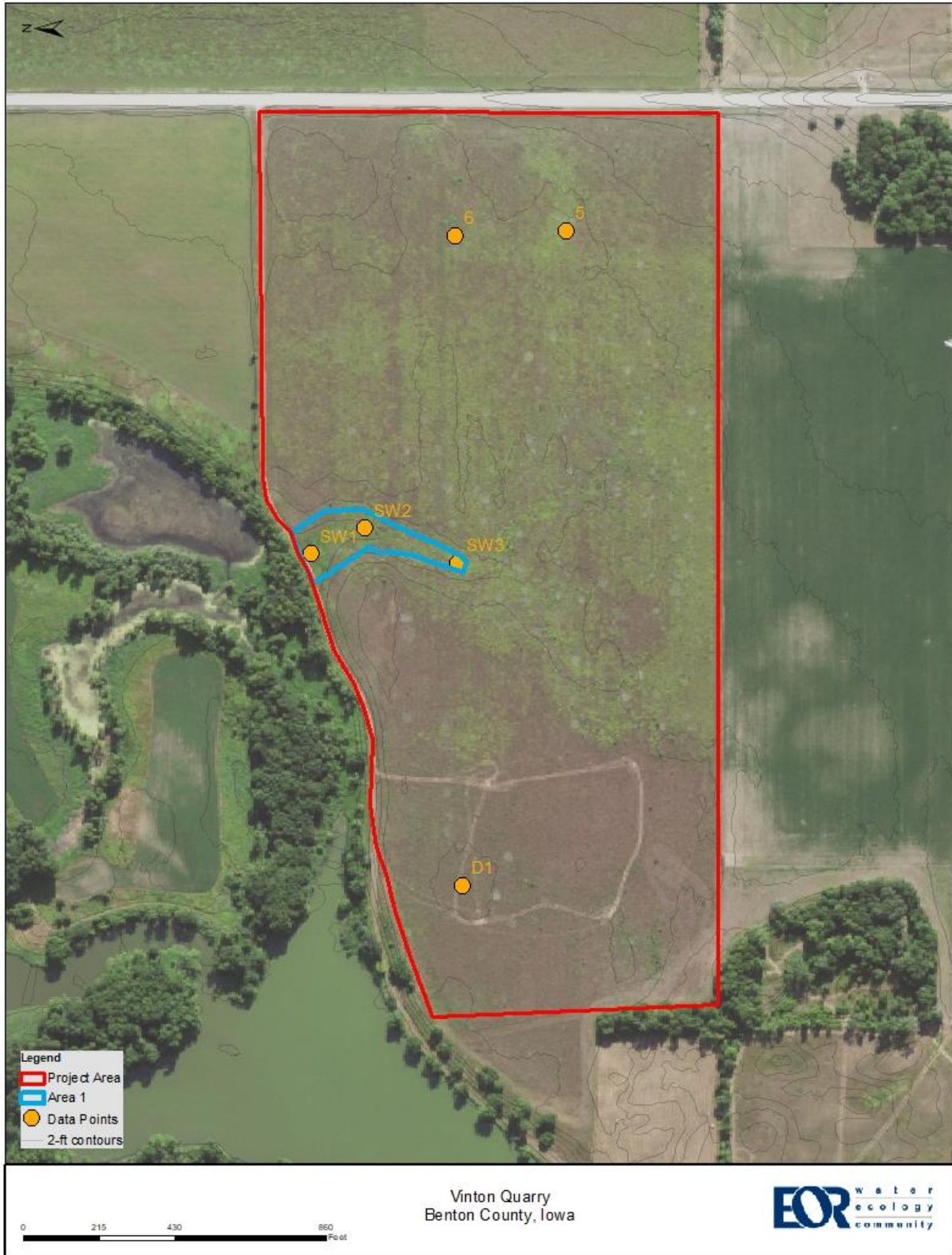


Figure 6. Waters of the U.S. and wetland Map.