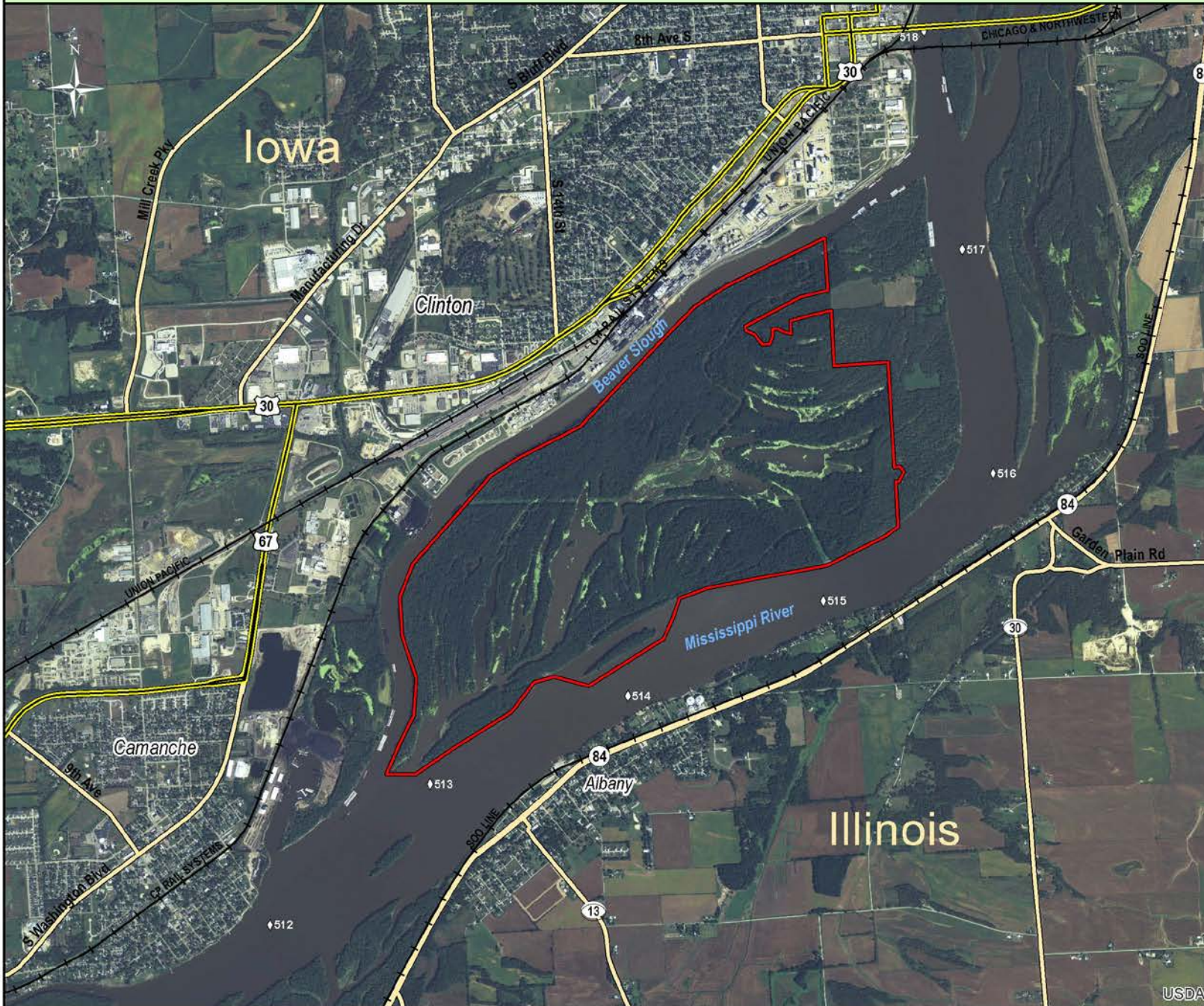


Beaver Island HREP - Overview



Area Totals







Beaver Island Project Area: 1687 ac

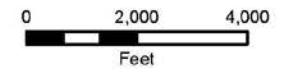
70% Annual Duration Inundation

Dry Area: 1510 ac

Wet Area: 177 ac

Legend

-  Project Boundary
-  US Highways
-  State Highways
-  Major Roads
-  Railroads
-  River Miles



Location Map



Map Production Date:
2014-02-27



US Army Corps of Engineers
Rock Island District

USDA