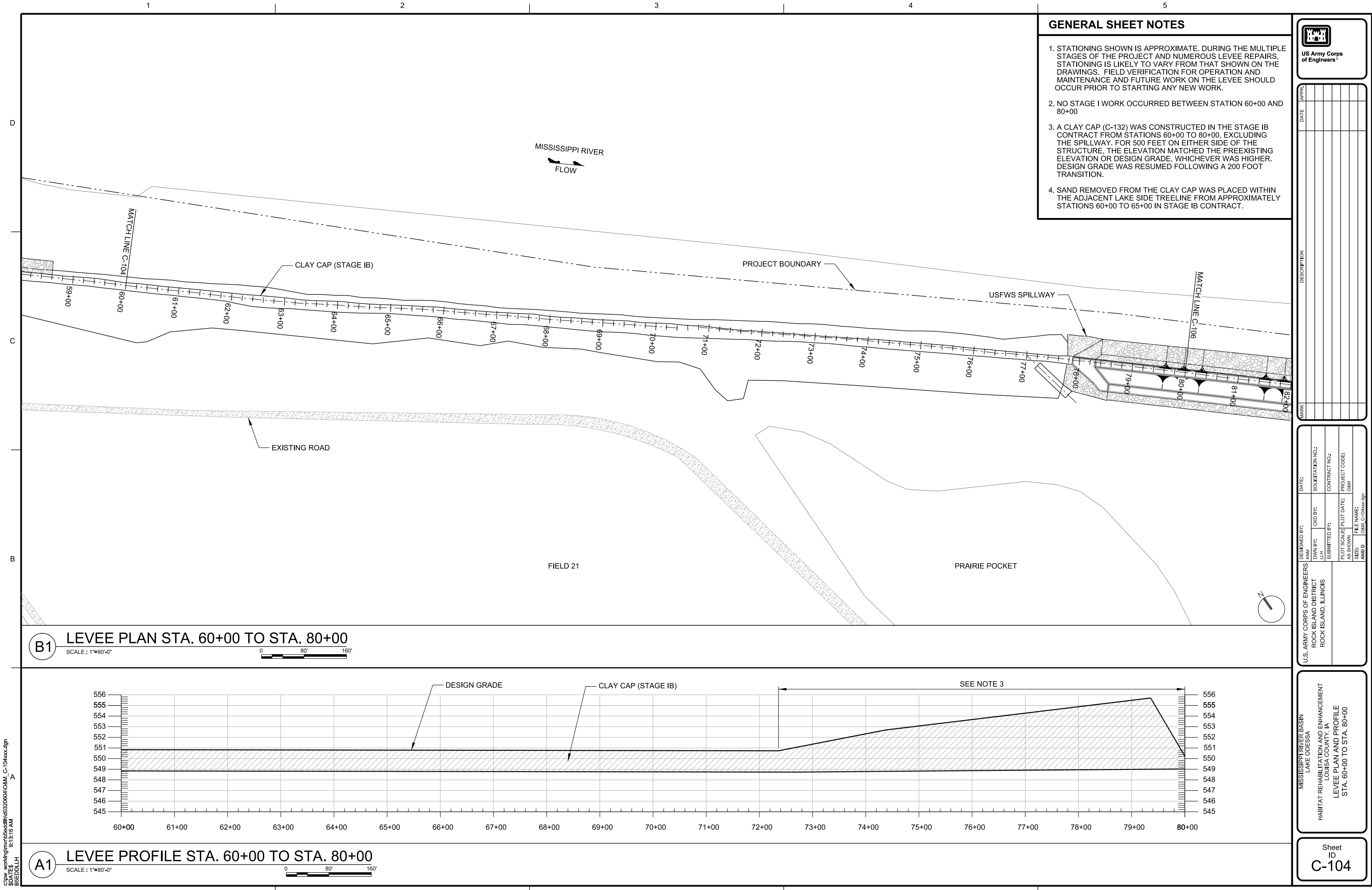
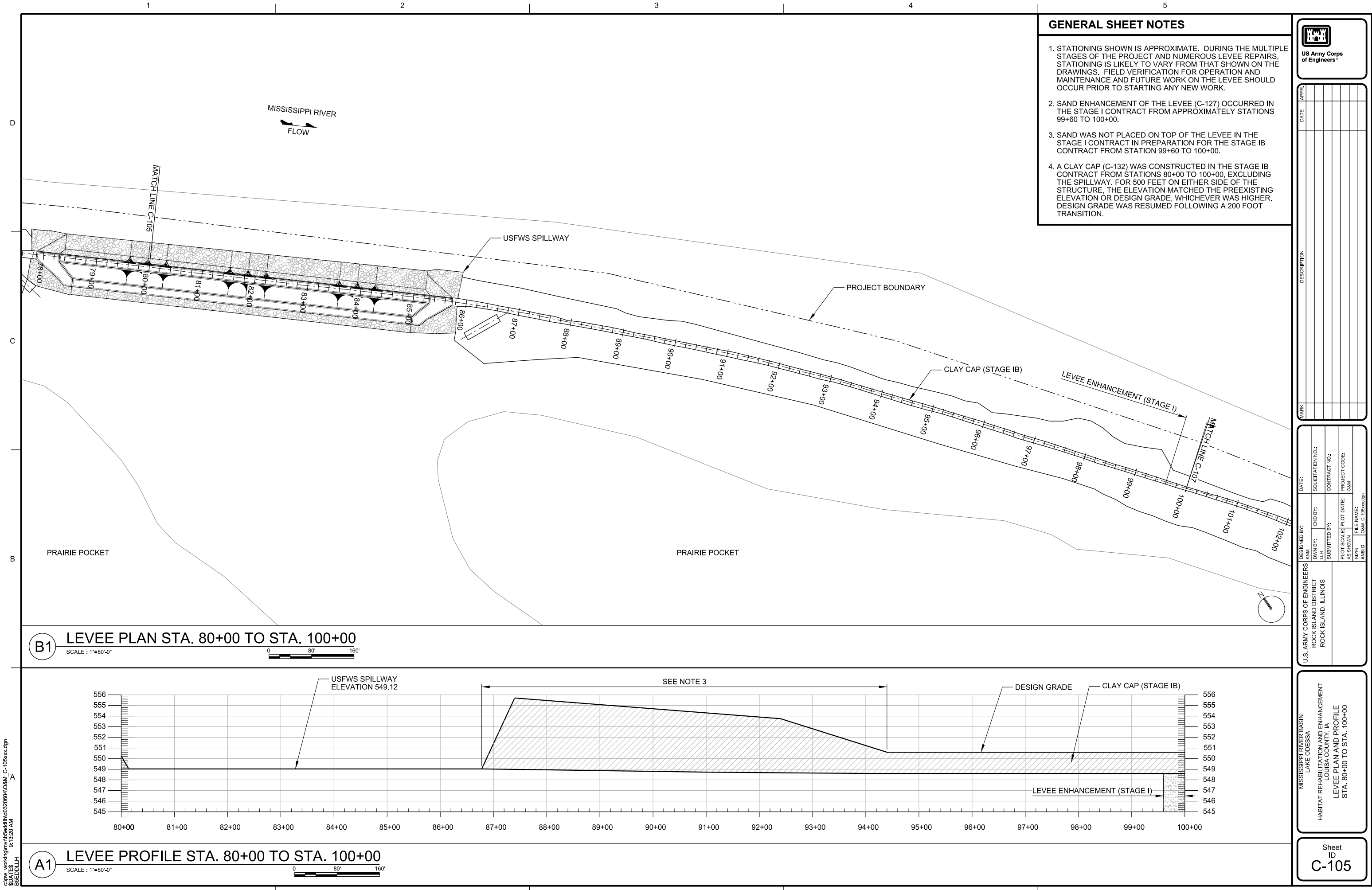


c:\pwworking\mrt5\eddlh\c032060\O&M\_C-102xxx.dgn  
SDATES  
9:12:59 AM  
BEDDLH











## GENERAL SHEET NOTES

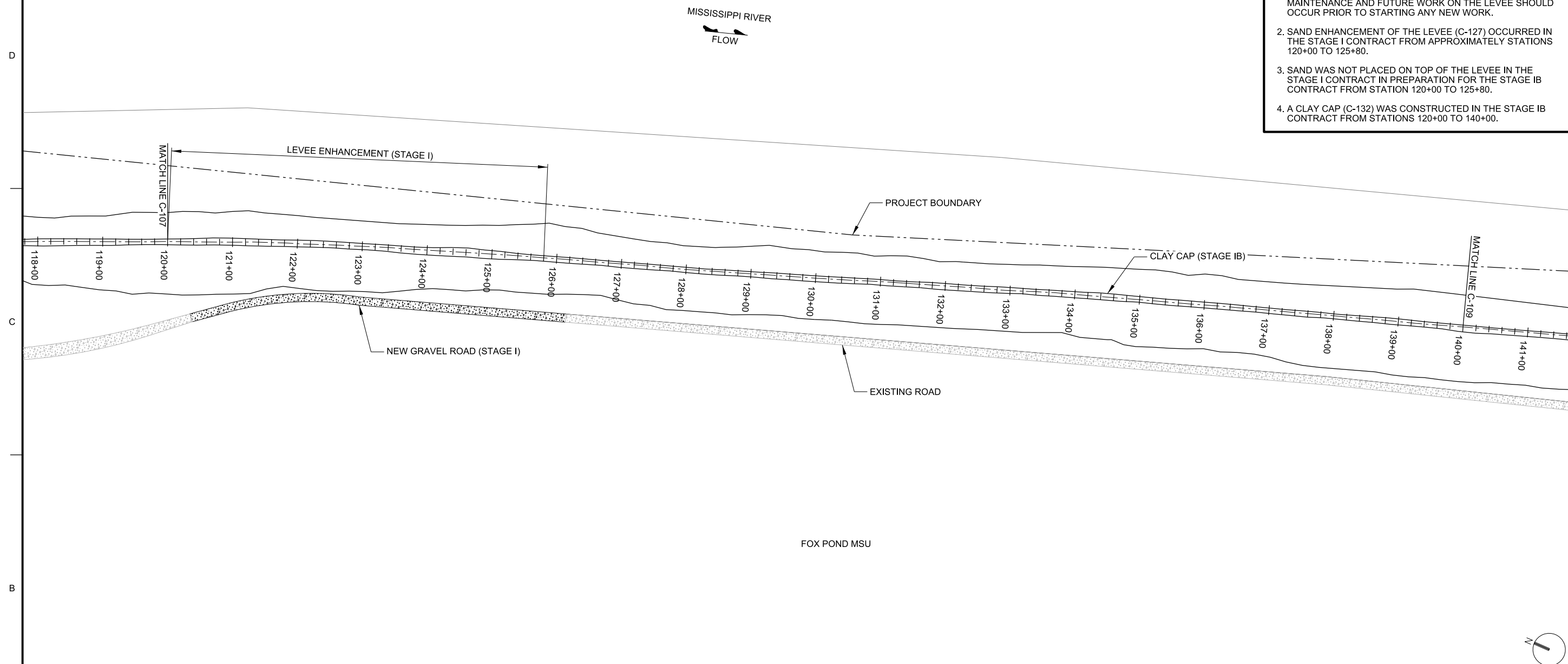
1. STATIONING SHOWN IS APPROXIMATE. DURING THE MULTIPLE STAGES OF THE PROJECT AND NUMEROUS LEVEE REPAIRS, STATIONING IS LIKELY TO VARY FROM THAT SHOWN ON THE DRAWINGS. FIELD VERIFICATION FOR OPERATION AND MAINTENANCE AND FUTURE WORK ON THE LEVEE SHOULD OCCUR PRIOR TO STARTING ANY NEW WORK.
2. SAND ENHANCEMENT OF THE LEVEE (C-127) OCCURRED IN THE STAGE I CONTRACT FROM APPROXIMATELY STATIONS 120+00 TO 125+80.
3. SAND WAS NOT PLACED ON TOP OF THE LEVEE IN THE STAGE I CONTRACT IN PREPARATION FOR THE STAGE IB CONTRACT FROM STATION 120+00 TO 125+80.
4. A CLAY CAP (C-132) WAS CONSTRUCTED IN THE STAGE IB CONTRACT FROM STATIONS 120+00 TO 140+00.

[illegible]

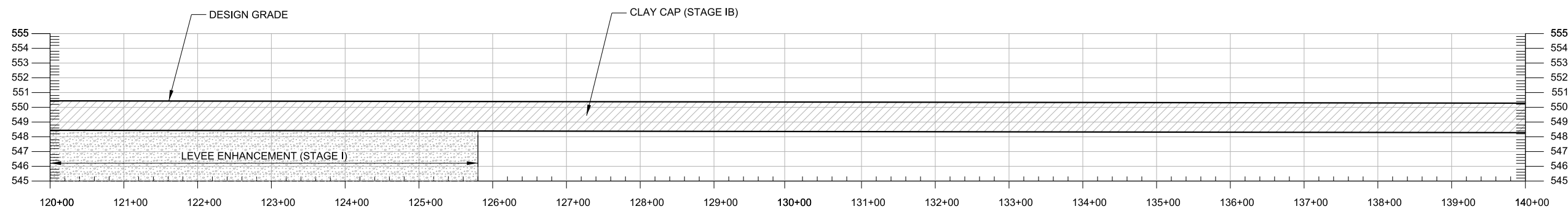
U.S. ARMY CORPS OF ENGINEERS ROCK ISLAND DISTRICT ROCK ISLAND, ILLINOIS	DESIGNED BY:	DATE:
	DWY BY:	SOLICITATION NO.:
	LLH	CRD BY:
	SUBMITTED BY:	CONTRACT NO.:
	PLOT SCALE:	PROJECT CODE:
	AS SHOWN	O&M
	SIZE:	FILE NAME:

MISSISSIPPI RIVER BASIN  
LAKE ODESSA

Sheet  
ID  
C-107



**B1** LEVEE PLAN STA. 120+00 TO STA. 140+00  
SCALE: 1"=80'-0"



**(A1) LEVEE PROFILE STA. 120+00 TO STA. 140+00**  
SCALE : 1"=80'-0"









## GENERAL SHEET NOTES

1. STATIONING SHOWN IS APPROXIMATE. DURING THE MULTIPLE STAGES OF THE PROJECT AND NUMEROUS LEVEE REPAIRS, STATIONING IS LIKELY TO VARY FROM THAT SHOWN ON THE DRAWINGS. FIELD VERIFICATION FOR OPERATION AND MAINTENANCE AND FUTURE WORK ON THE LEVEE SHOULD OCCUR PRIOR TO STARTING ANY NEW WORK.
2. SAND ENHANCEMENT OF THE LEVEE (C-127) OCCURRED IN THE STAGE I CONTRACT FROM APPROXIMATELY STATIONS 220+00 TO 240+00.
3. SAND WAS NOT PLACED ON TOP OF THE LEVEE IN THE STAGE I CONTRACT IN PREPARATION FOR THE STAGE IB CONTRACT FROM STATION 220+00 TO 240+00.
4. A CLAY CAP (C-132) WAS CONSTRUCTED IN THE STAGE IB CONTRACT FROM STATIONS 220+00 TO 240+00.

[illegible]

U.S. ARMY CORPS OF ENGINEERS ROCK ISLAND DISTRICT ROCK ISLAND, ILLINOIS	DESIGNED BY:	DATE:
	KRM	
	DWN BY:	SOLICITATION NO.:
	L/H	
	CRD BY:	CONTRACT NO.:
	SUBMITTED BY:	
	PILOT SCALE:	PROJECT CODE:
	AS SHOWN	O&M
	SIZE:	FILE NAME:

MISSISSIPPI RIVER BASIN  
LAKE ODESSA  
LOUISA COUNTY, IA  
HABITAT REHABILITATION AND ENHANCEMENT  
LEVEE PLAN AND PROFILE  
STA. 220+00 TO STA. 240+00

Sheet  
ID  
C-112

TURKEY CHUTE  
MISSISSIPPI RIVER  
FLOW

## PROJECT BOUNDARY

- LEVEE ENHANCEMENT (STAGE I)

- CLAY CAP (STAGE IB)

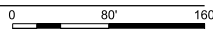
EPHEMERAL WETLAND (STAGE I)

◦ E 2306922.02  
N 442908.10

(B1)

LEVEE PLAN STA. 220+00 TO STA. 240+00

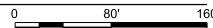
SCALE : 1"=80'-0"



(A1)

LEVEE PROFILE STA. 220+00 TO STA. 240+00

SCALE : 1"=80'-0"



\\pwworking\mv\b5eddl\hd0320604\O&M\_C-112xxx.dgn  
 \$DATE\$ 9:14:07 AM  
 \$EDDL\$ 35EDDLH A



## GENERAL SHEET NOTES

1. STATIONING SHOWN IS APPROXIMATE. DURING THE MULTIPLE STAGES OF THE PROJECT AND NUMEROUS LEVEE REPAIRS, STATIONING IS LIKELY TO VARY FROM THAT SHOWN ON THE DRAWINGS. FIELD VERIFICATION FOR OPERATION AND MAINTENANCE AND FUTURE WORK ON THE LEVEE SHOULD OCCUR PRIOR TO STARTING ANY NEW WORK.
2. SAND ENHANCEMENT OF THE LEVEE (C-127) OCCURRED IN THE STAGE I CONTRACT FROM APPROXIMATELY STATIONS 240+00 TO 260+00.
3. SAND WAS NOT PLACED ON TOP OF THE LEVEE IN THE STAGE I CONTRACT IN PREPARATION FOR THE STAGE IB CONTRACT FROM STATION 240+00 TO 260+00.
4. A CLAY CAP (C-132) WAS CONSTRUCTED IN THE STAGE IB CONTRACT FROM STATIONS 240+00 TO 260+00.

[illegible]

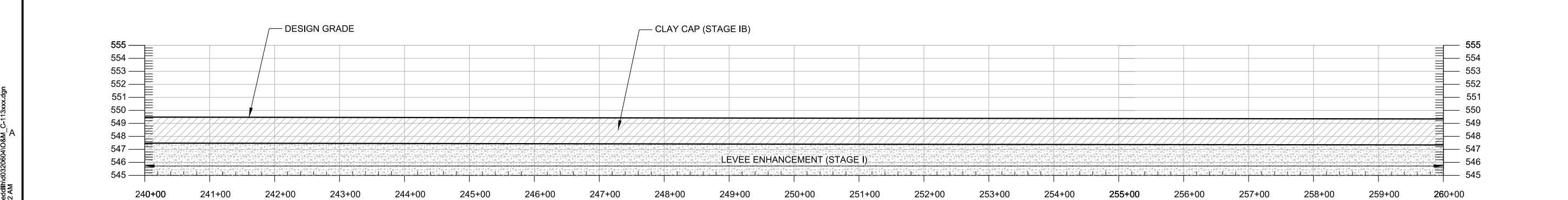
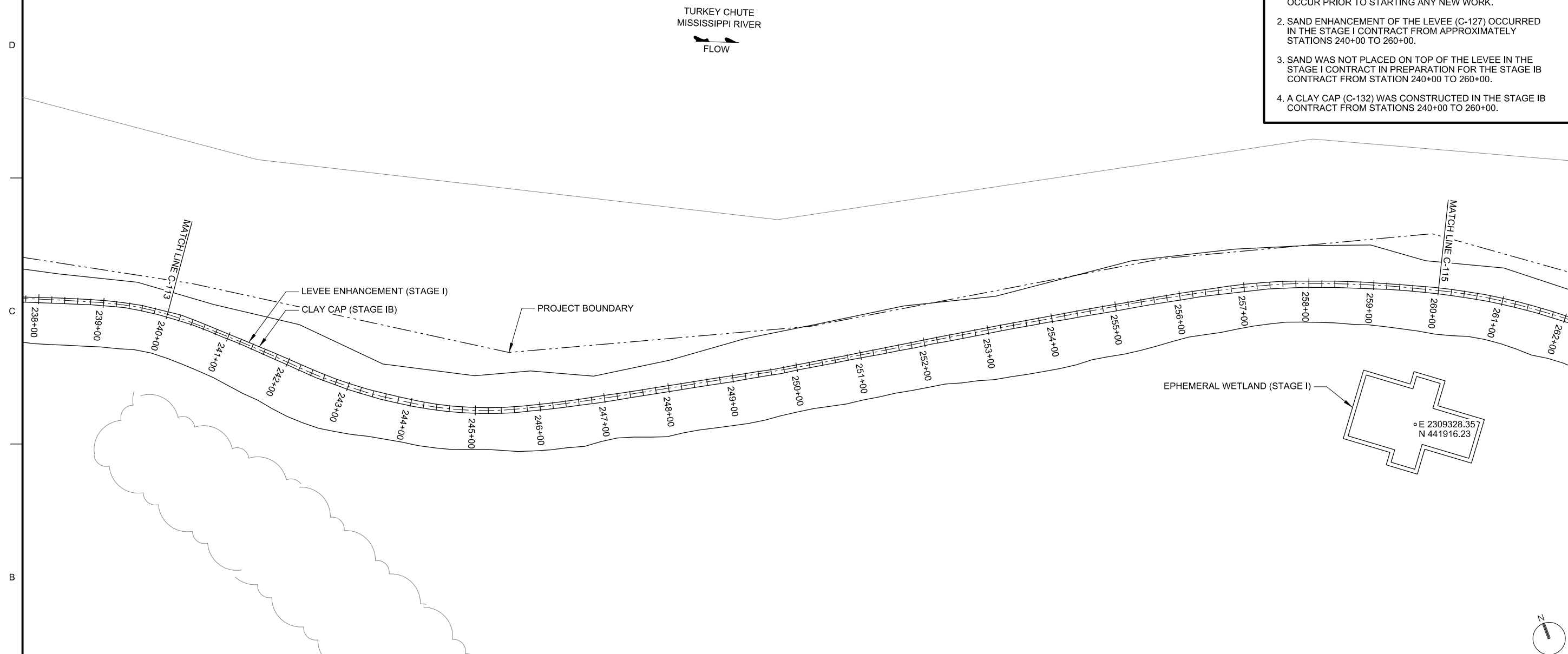
U.S. ARMY CORPS OF ENGINEERS ROCK ISLAND DISTRICT ROCK ISLAND, ILLINOIS	DESIGNED BY:	DATE:
	DWY BY:	SOLICITATION NO.:
	LLH	CRD BY:
	SUBMITTED BY:	CONTRACT NO.:
	PILOT SCALE:	PROJECT CODE:
	AS SHOWN	O&M
	SIZE:	FILE NAME:

MISSISSIPPI RIVER BASIN  
LAKE ODESSA

HABITAT REHABILITATION AND ENHANCEMENT  
LOUISIANA COUNTY, IA

LEVEE PLAN AND PROFILE  
STA. 240+00 TO STA. 260+00

Sheet  
ID  
C-113



35EDDLLH  
DATES\$ 9:14:12 AM  
A  
:\pw\_working\mrv\rb5edd\h\id0320604\O&M\_C-113xxx.dgn















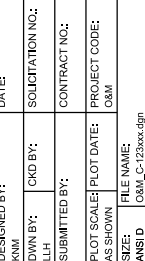






**US Army Corps  
of Engineers®**

- [illegible]



U.S. ARMY CORPS OF ENGINEERS  
ROCK ISLAND DISTRICT  
ROCK ISLAND, ILLINOIS

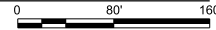
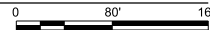
MISSISSIPPI RIVER BASIN  
LAKE ODESSA

HABITAT REHABILITATION AND ENHANCEMENT  
LOUISIANA COUNTY, IA

LEVEE PLAN AND PROFILE  
STA. 440+00 TO STA. 460+00

Sheet  
ID  
C-123

SCALE : 1"=80'-0"



c:\pw\_working\mvr\b5edd\hl\0320604\O&M\_C-123xxx.dgn  
\$DATE\$ 11:43:25 AM  
B5EDD\H A

## GENERAL SHEET NOTES

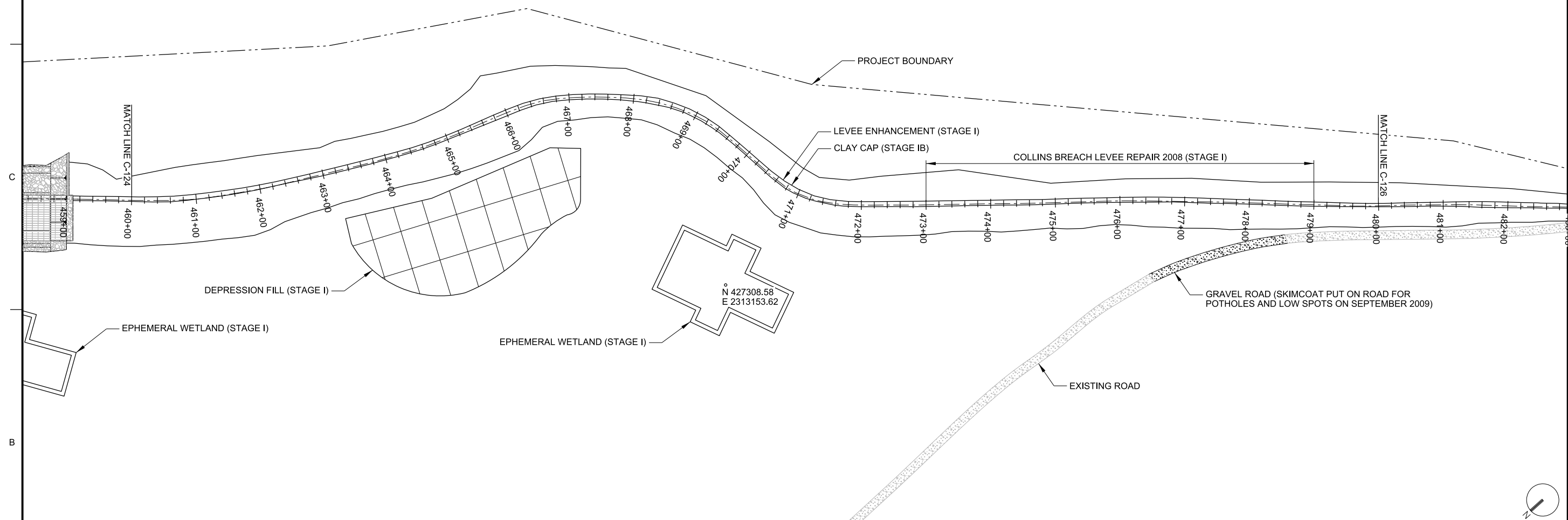
1. STATIONING SHOWN IS APPROXIMATE. DURING THE MULTIPLE STAGES OF THE PROJECT AND NUMEROUS LEVEE REPAIRS, STATIONING IS LIKELY TO VARY FROM THAT SHOWN ON THE DRAWINGS. FIELD VERIFICATION FOR OPERATION AND MAINTENANCE AND FUTURE WORK ON THE LEVEE SHOULD OCCUR PRIOR TO STARTING ANY NEW WORK.
2. CLAY ENHANCEMENT OF THE LEVEE (C-132) OCCURRED IN THE STAGE I CONTRACT, FROM 460+00 TO 472+00.
3. DEPRESSION FILL OF SCOUR AREAS WAS COMPLETED IN THE STAGE I CONTRACT UNDER MODIFICATION A000003 AT STATION 465+00.
4. CLAY ENHANCEMENT OF THE LEVEE (C-133) WAS CONSTRUCTED IN THE STAGE IB CONTRACT.

[illegible]

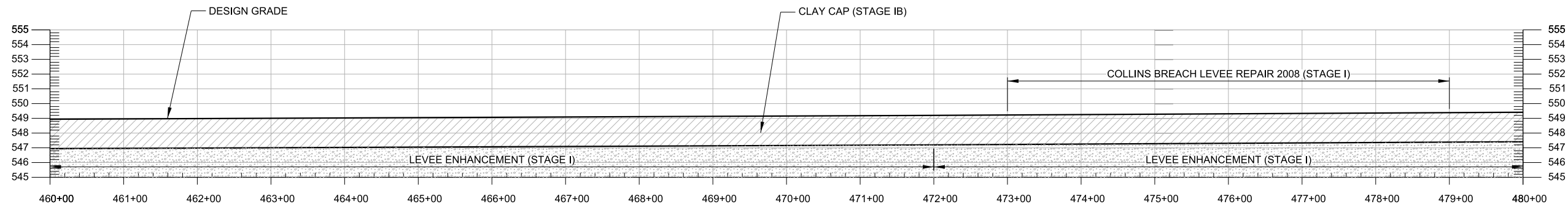
U.S. ARMY CORPS OF ENGINEERS ROCK ISLAND DISTRICT ROCK ISLAND, ILLINOIS	DESIGNED BY:		DATE:
	KNM		
	DWN BY:	CKD BY:	SOLUTION NO.:
	LH		
	SUBMITTED BY:		CONTRACT NO.:
	PLOT SCALES (PLOT DATE):		PROJECT CODE:
	AS SHOWN		Q&M
	SIZE:	FILE NAME:	

MISSISSIPPI RIVER BASIN  
LAKE ODESSA  
HABITAT REHABILITATION AND ENHANCEMENT  
LOUISA COUNTY, IA  
LEVEE PLAN AND PROFILE  
STA. 460+00 TO STA. 480+00

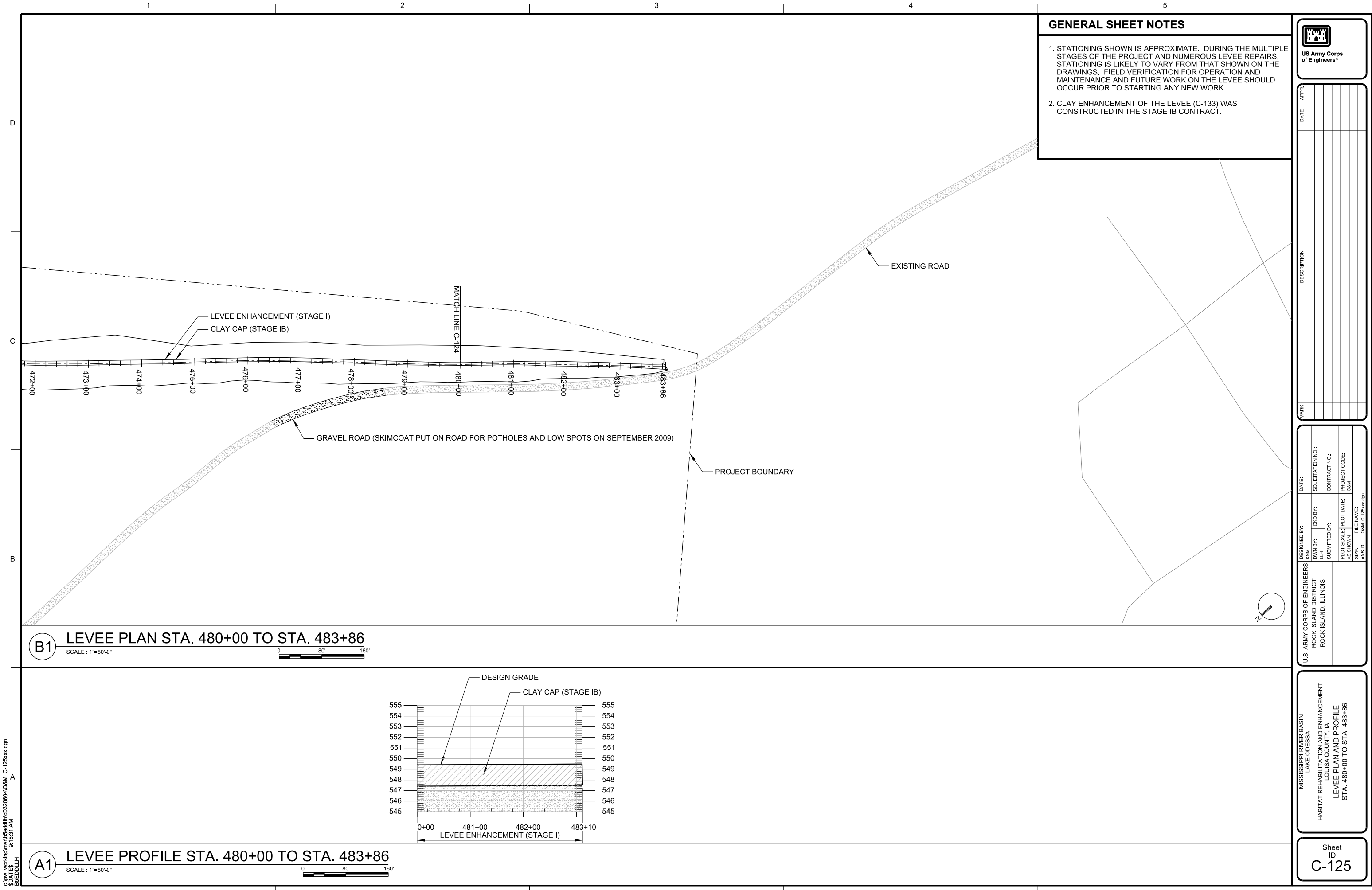
Sheet  
ID  
C-124



**B1** LEVEE PLAN STA. 460+00 TO STA. 480+00  
SCALE: 1"=80'-0"



**A1** LEVEE PROFILE STA. 460+00 TO STA. 480+00  
SCALE: 1"=80'-0" 0 80' 160'



c:\pwworking\mvt\5eddlh\c032060\O&M\_C-125xxx.dgn  
SDATES  
9/15/31 AM  
BEDDLH


c:\pwworking\mrvt\5eddlh\4032060\O&M\_C-126xxx.dgn  
SDATES  
10/4/2019 AM  
BEDDLH

A  
B  
C  
D

		Structure	Elevations (After 2013 Flood Recovery)	Elevations (After Stage IB)	Elevations (After Stage I)			Structure	Elevations (After 2013 Flood Recovery)	Elevations (After Stage IB)	Elevations (After Stage I)
Start	Stop					Start	Stop				
0+00				No less than 551.2	551.2	372+70	380+00	Spillway	544.9		
10+00				No less than 551.2		376+80		replaced in later stage with spilway		548.2	
42+00				No less than 551.0							
43+00				No less than 551.0							
50+00					551.0						
US of inlet				552.2		DS End of Spillway			548.4	548.4	
50+00	51+00	INLET			532.25	US of Outlet			No less than 548.8	No less than 548.8	
DS of inlet				552.2		384+00	385+00	Outlet			528.0
55+70			551			DS of outlet				No less than 548.8	
58+00				550.9		392+20				548.0	
58+60			551			397+00					548.0
71+40				550.8		400+00				548.0	
US End of Spillway				555.7		423+80				548.0	548.0
						425+80				550.0	550.0
						DS End of SPillway				550.0	550.0
78+20	86+20	Spillway			549.12	430+80	442+00	Spillway			545.2
DS End of Spillway				555.7		US End of Spillway			550.0	550.0	550.0
94+40				550.6							
100+00				550.6							
150+00				550.2							
200+00				549.8		445+00			550.0		
250+00				549.4		447+40			550.0		
266+00				549.3	549.3	449+00			550.0		550.0
266+05					549.0	449+40			548.7		548.7
267+20				549.3		DS End of SPillway			548.7		548.7
268+40				549.0							
300+00			548.8	548.8							
350+00			548.4	548.4		454+00	459+00	Spillway	545.5		
US End of spillway			548.4	548.4		US End of Spillway			548.7		548.7
						472+00				549.2	549.2
						479+26					548.0
						483+10				549.5	549.5

GENERAL SHEET NOTES

1. STATIONING SHOWN IS APPROXIMATE. DURING THE MULTIPLE STAGES OF THE PROJECT AND NUMEROUS LEVEE REPAIRS, STATIONING IS LIKELY TO VARY FROM THAT SHOWN ON THE DRAWINGS. FIELD VERIFICATION FOR OPERATION AND MAINTENANCE AND FUTURE WORK ON THE LEVEE SHOULD OCCUR PRIOR TO STARTING ANY NEW WORK.



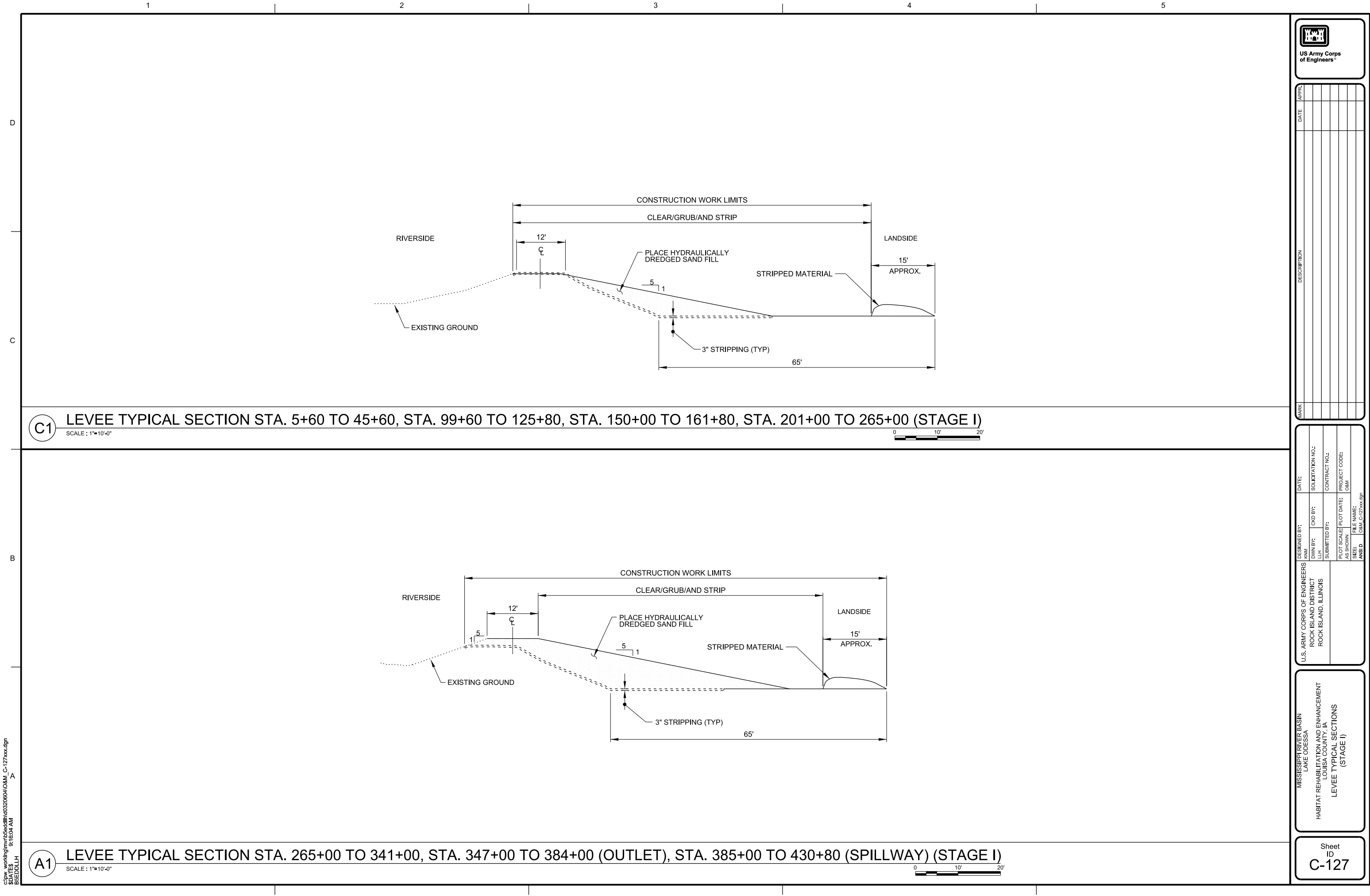
US Army Corps  
of Engineers®

APPR.											
DATE											
DESCRIPTION											
MARK											

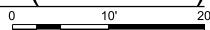
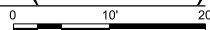
DESIGNED BY:	DATE:	SOLICITATION NO.:
U.S. ARMY CORPS OF ENGINEERS		
DOWN BY:	CHK BY:	CONTRACT NO.:
ROCK ISLAND DISTRICT		
ROCK ISLAND, ILLINOIS		
SUBMITTED BY:	PROJECT NO.:	
U.S. ARMY CORPS OF ENGINEERS		
ROCK ISLAND DISTRICT		
ROCK ISLAND, ILLINOIS		
PLOT SCALE:	PLOT DATE:	PROJECT CODE:
AS SHOWN		O&M
SIZE:	FILE NAME:	
ANSI D	O&M_C-126xxx.dgn	

MISSISSIPPI RIVER BASIN  
LAKE ODESSA  
HABITAT REHABILITATION AND ENHANCEMENT  
LOUISIANA COUNTY, LA  
LEVEE SCHEDULE

Sheet  
ID  
C-126



**US Army Corps  
of Engineers®**

[illegible]

\\c:\pw\_working\m\vb5edllh\0320604\O&M\_C-128xxx.dgn  
\$DATE\$ 9:16:14 AM  
B5EDLLH A

U.S. ARMY CORPS OF ENGINEERS ROCK ISLAND DISTRICT ROCK ISLAND, ILLINOIS	DESIGNED BY: KMI		DATE:
	OWN BY: LLH	ORD BY:	SOLICITATION NO.:
	SUBMITTED BY:		CONTRACT NO.:
	PLOT SCALE: PLOT DATE: AS SHOWN	PROJECT CODE: O&M	
ANSI		SIZE:	FILE NAME: O&M C-128x60.dgn

MISSISSIPPI RIVER BASIN  
LAKE ODESSA  
HABITAT REHABILITATION AND ENHANCEMENT  
LOUISA COUNTY, IA  
LEVEE TYPICAL SECTIONS  
MICHAEL CREEK  
(STAGE 1B)

Sheet  
ID  
C-128



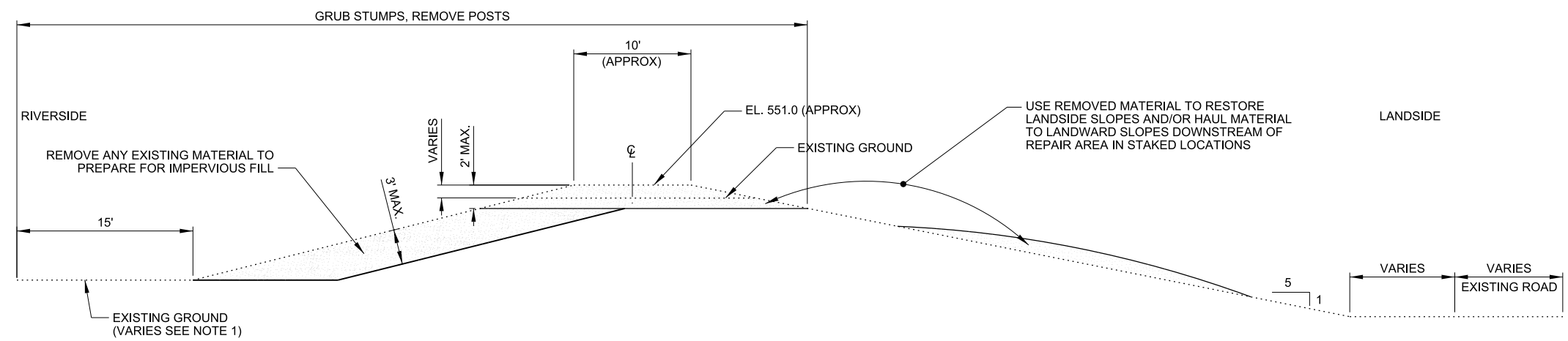
c:\pwworking\mvt\5eddlh\4032060\O&M\_C-129xxx.dgn  
5/16/18 AM  
5/16/18  
BEDDLH

D

C

B

A



**C1** LEVEE TYPICAL SECTION - STA. 55+70 TO STA. 58+60 (2013 FLOOD RECOVERY)

SCALE : 1"=10'-0"

0 10' 20'

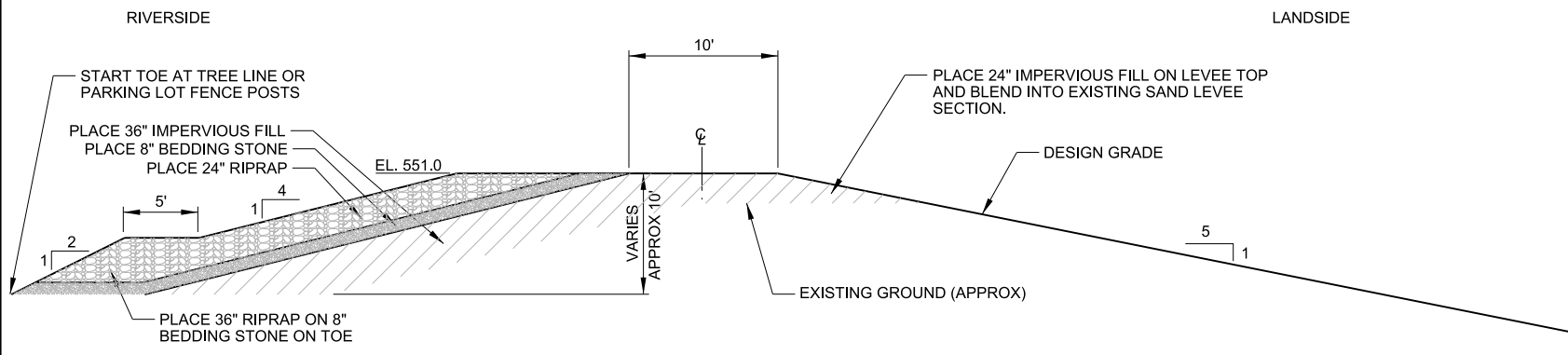
- GENERAL SHEET NOTES**
1. USFWS RESTORED LEVEE TO APPROXIMATELY DESIGN GRADE IN SEPTEMBER 2014 USING RESTORED SAND FOLLOWING LEVEE BREACH.
  2. THE LEVEE WAS DEGRADED BELOW DESIGN GRADE AS SHOWN. THE LEVEE WAS REBUILT WITH IMPERVIOUS MATERIALS TO THE DESIGN GRADE.
  3. SMOOTH SLOPE (MINIMUM 5H : 1V) IS REQUIRED BETWEEN LEVEE ENHANCEMENT AND ADJACENT LEVEE.
  7. THE LEVEE REPAIR WAS SEEDED.
  9. LEVEE REPAIR COMPLETED SUCH THAT FINAL CROWN ELEVATION, AS SHOWN IN THE DESIGN LEVEE GRADE SCHEDULE, OCCURS AT THE LEVEE CENTERLINE.

APPR.	
DATE	
DESCRIPTION	
MARK	

DESIGNED BY:	DATE:	SOLICITATION NO.:
KMM		
DWN BY:	CHK BY:	CONTRACT NO.:
SUBMITTED BY:	PLOT DATE:	PROJECT CODE:
		O&M
PLOT SCALE:	FILE NAME:	
AS SHOWN	0&M_C-129xxx.dgn	
SIZE:	ANSI D	

MISSISSIPPI RIVER BASIN  
LAKE ODESSA  
HABITAT REHABILITATION AND ENHANCEMENT  
LOUISIANA COUNTY, LA  
LEVEE TYPICAL SECTIONS  
STA. 55+70 TO STA. 58+60  
(2013 FLOOD RECOVERY)

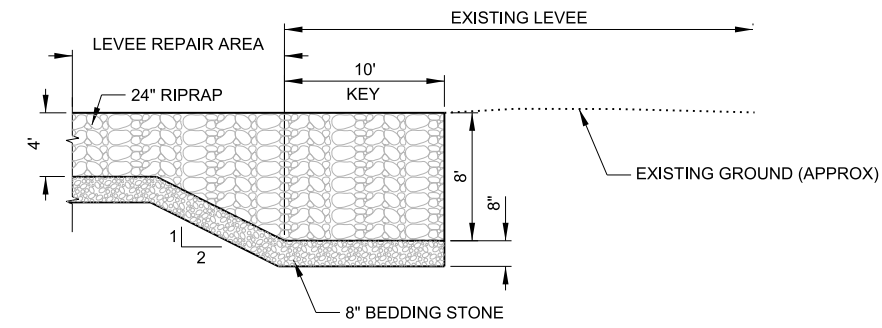
Sheet ID  
**C-129**



**A1** LEVEE TYPICAL SECTION - STA. 55+70 TO STA. 58+60 (2013 FLOOD RECOVERY)

SCALE : 1"=10'-0"

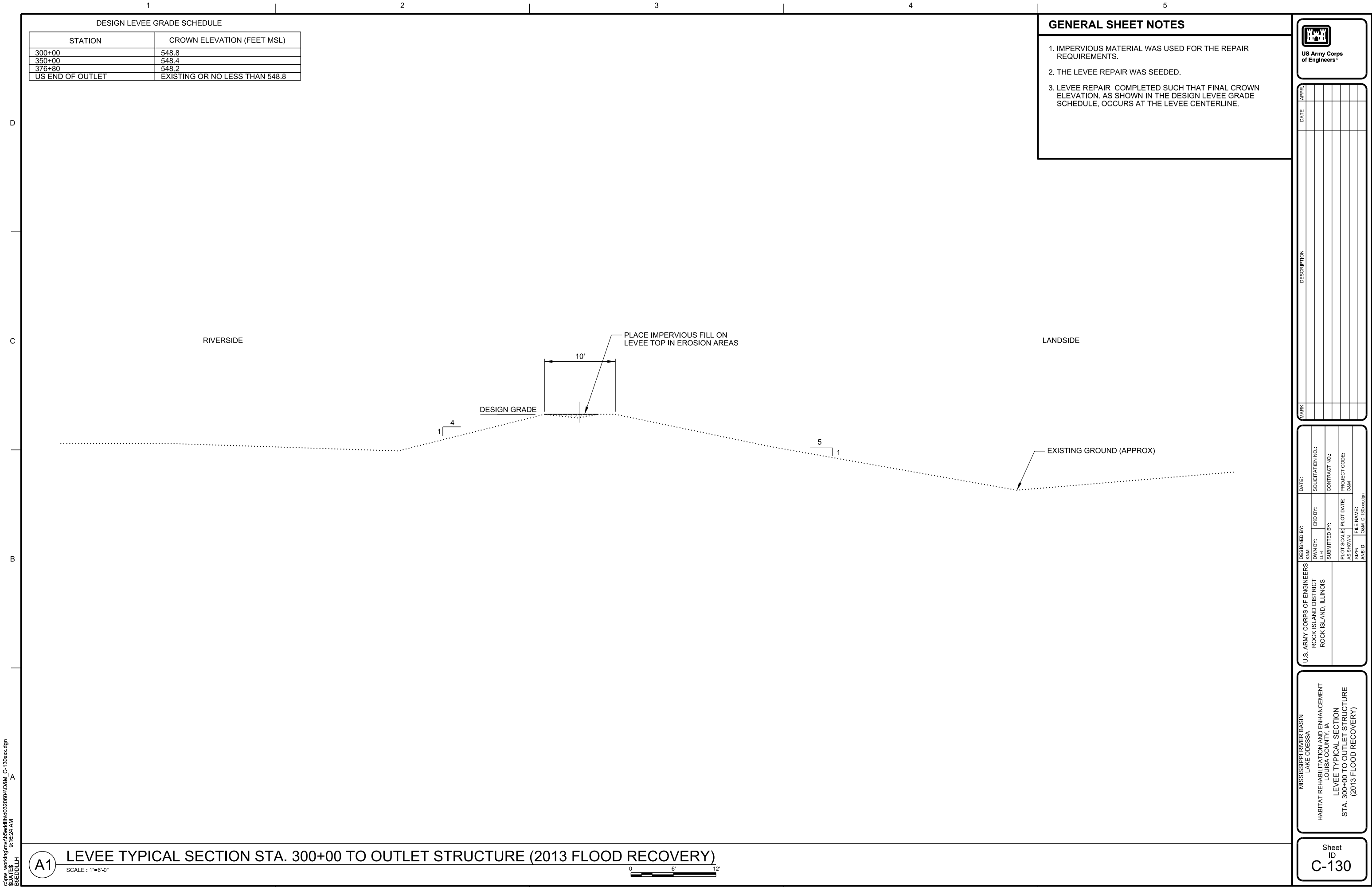
0 10' 20'



**A4** TYPICAL KEYED IN ENDS SECTION (2013 FLOOD RECOVERY)

SCALE : 1"=10'-0"

0 10' 20'



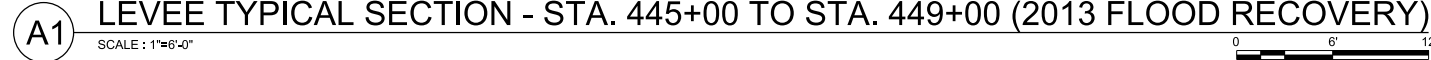
**US Army Corps  
of Engineers®**

- [illegible]

U.S. ARMY CORPS OF ENGINEERS ROCK ISLAND DISTRICT ROCK ISLAND, ILLINOIS	DESIGNED BY:	DATE:
	DRAWN BY:	SOLICITATION NO.:
	CHK BY:	CONTRACT NO.:
	SUBMITTED BY:	
	PLOT SCALE:	PLOT DATE:
	DATE DOWN LOADED:	COM:
	FILE NAME:	
	SIZE:	
	ANSI D:	OSM, C-13 (no sign)

MISSISSIPPI RIVER BASIN  
LAKE ODESSA  
HABITAT REHABILITATION AND ENHANCEMENT  
LOUISA COUNTY, IA  
LEVEE TYPICAL SECTIONS  
STA. 445+00 TO STA. 449+00  
(2013 FLOOD RECOVERY)

Sheet  
ID  
C-131



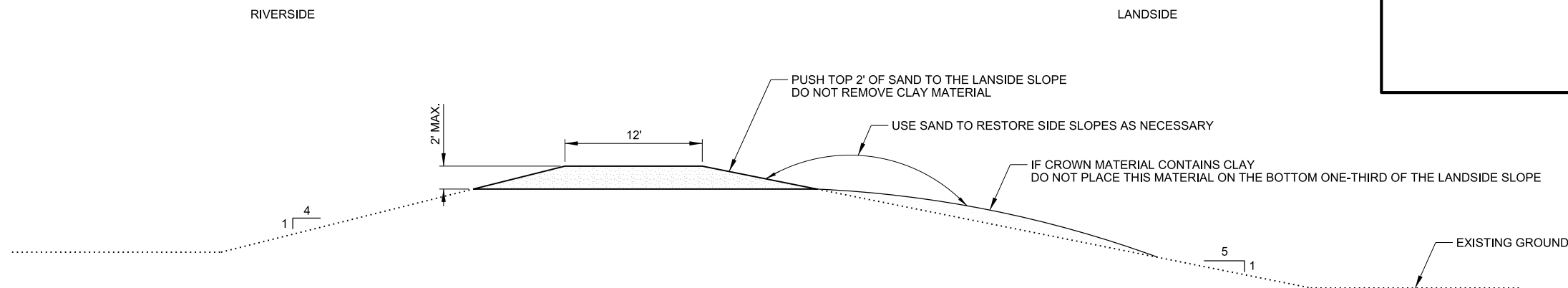
1. LEVEE SECTIONS WHERE NO ENHANCEMENT WAS REQUIRED WAS NOT CLEARED/GRUBBED/STRIPPED.
2. IF CLAY MATERIAL IS WITHIN THE TOP 2' SAND ONLY SAND MATERIAL WAS REMOVED.

[illegible]

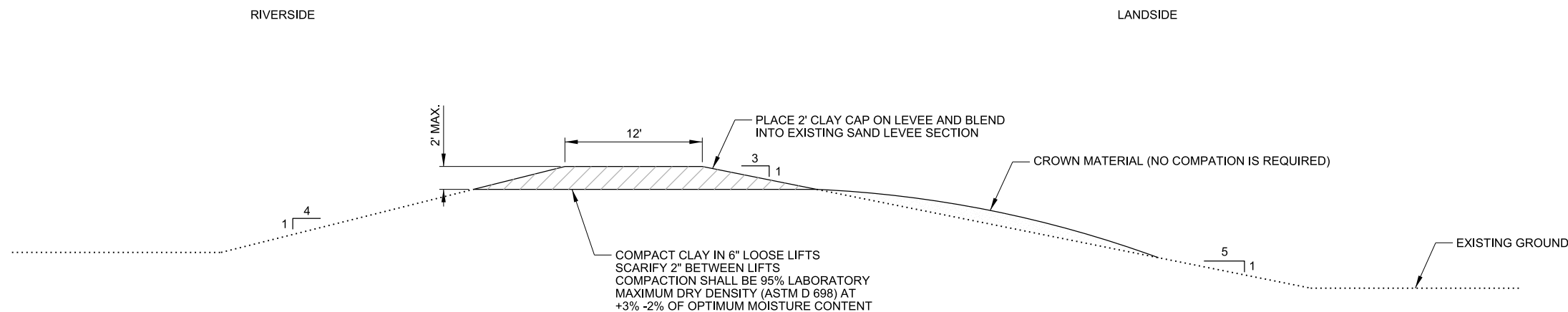
U.S. ARMY CORPS OF ENGINEERS ROCK ISLAND DISTRICT ROCK ISLAND, ILLINOIS	DESIGNED BY:		DATE:	
	DRAW BY: L.H.	CHKD BY:	SOLICITATION NO.:	
	SUBMITTED BY:		CONTRACT NO.:	
	PLOT SCALE:	PLOT DATE:	PROJECT CODE:	
	AS SHOWN		O&M	
SIZE	FILE NAME:			
ANSI D			O&M C-132exc.dgn	

MISSISSIPPI RIVER BASIN  
LAKE ODESSA  
HABITAT REHABILITATION AND ENHANCEMENT  
LOUISIANA COUNTY, IA  
LEVEE TYPICAL SECTIONS  
(STAGE 1B)

Sheet  
ID  
C-132

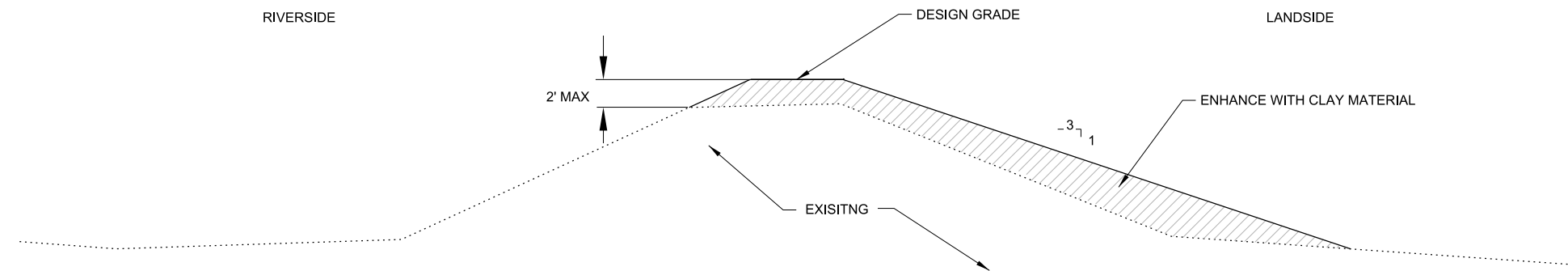


C1 LEVEE PREPARATION FOR CLAY CAP TYPICAL SECTION STA. 0+00 TO END (STAGE IB)

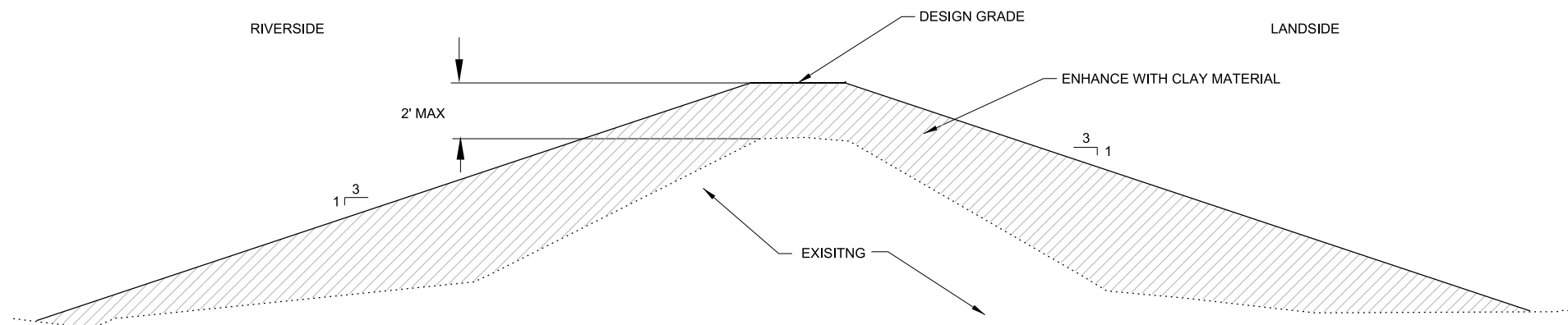
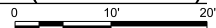
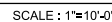


**A1** CLAY CAP ON LEVEE TYPICAL SECTION STA. 0+00 TO END (STAGE IB)

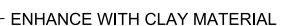
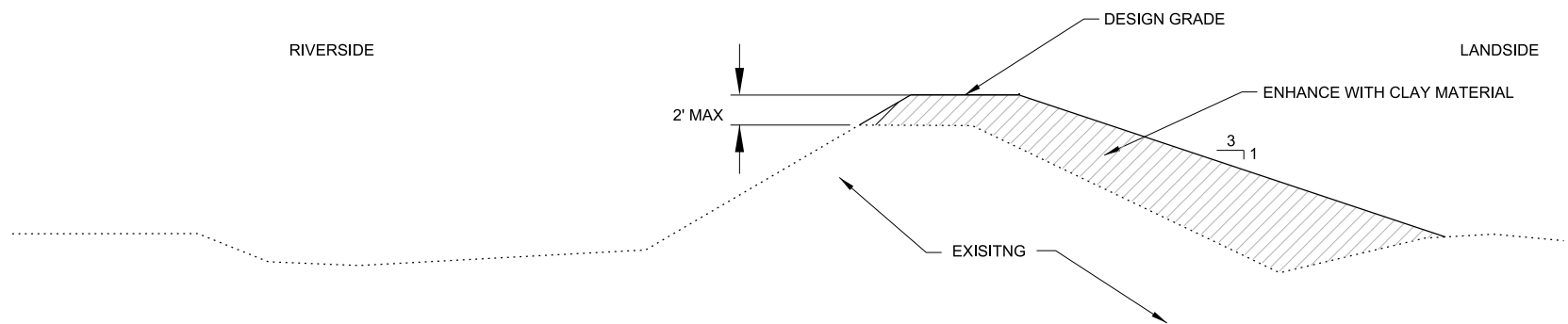
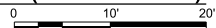
\\c:\pw\_working\m\vb5eddlh\0320604\O&M\_C-132xxx.dgn  
\$DATE\$ 9:16:37 AM  
B5EDDLH A



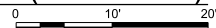
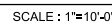
**C1** **LEEVE TYPICAL SECTION - STA. 478+00 TO STA. 483+10 (STAGE IB)**  
SCALE : 1"=10'-0" 0 10' 20'



**B1** LEVEE TYPICAL SECTION - STA. 476+25 TO STA. 478+00 (STAGE IB)



**A1** LEVEE TYPICAL SECTION - STA. 472+00 TO STA. 476+25 (STAGE IB)

[illegible]

U.S. ARMY CORPS OF ENGINEERS ROCK ISLAND DISTRICT ROCK ISLAND, ILLINOIS	DESIGNED BY: OMM_C-133xxx.dgn	DATE:
	DWN BY:	SOLICITATION NO.:
SUBMITTED BY:	CKD BY:	CONTRACT NO.:
LLH	PLOT SCALE:	PROJECT CODE:
AS-SIGNED WITH:	FILE NAME:	DWN
SIZE:	ANS D:	OMM_C-133xxx.dgn

MISSISSIPPI RIVER BASIN  
LAKE ODESSA  
HABITAT REHABILITATION AND ENHANCEMENT  
LOUISIANA COUNTY, LA  
LEVEE TYPICAL SECTIONS  
STA. 472+00 TO STA. 483+10  
(STAGE 1B)

Sheet  
ID  
C-133

\\c:\pw\_working\mv\b5eddl\hd0320604\O&M\_C-133xxx.dgn  
\$DATE\$ 9:16:41 AM  
B5EDDLLH A