



**US Army Corps
of Engineers®**

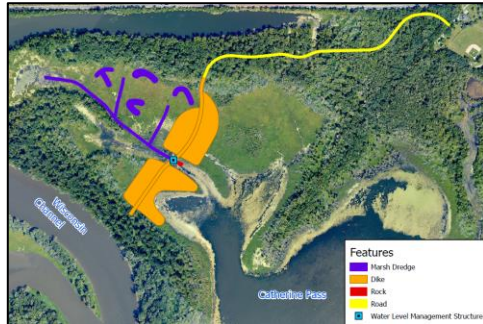
PROJECT FACT SHEET

Marsh Habitat Rehabilitation

Upper Mississippi River, Pool 4, River Miles 786-788

Pierce County, Wisconsin

Navigation Ecosystem Sustainability Program, St. Paul District



Location. The project site is at the head of Lake Pepin in Pool 4 of the Upper Mississippi River between river mile 786-788.

Land Ownership. Potential project lands, in addition to the river bottom, are owned by the State of Wisconsin.

Resource Problems.

- Lack of emergent and submerged aquatic vegetation.
- Degradation of habitat for migrating waterfowl and other species.
- Loss of bathymetric diversity.

NESP Project Type. Marsh Dredging for Duck Habitat could consist of the following NESP project types: backwater habitat restoration.

The marsh is located in the NW quadrant of the project area. Project features associated with the marsh were designed to provide better water management capabilities, reduced connectivity with the river, and better elevation diversity in the Marsh.

Project Objective. The existing Upper Pool 4 Pierce County Islands project (1122 project) considered addressing these deficiencies through the construction of numerous features in a large project area. Funding constraints reduced the scope of the project even though these features would have been beneficial. Objectives include:

- Increase the health, diversity and acreage of emergent and floating leafed aquatic vegetation.
- Increase the health, diversity, and acreage of submerged aquatic vegetation.
- Improve and increase the quantity and quality of wetland habitat for backwater waterfowl species.

Potential Measures.

- Dike and Water Level Management Structure
- Marsh Structure Channel
- Marsh Dredge (Potholes)
- Access Road

Financial Information (Estimate). The estimated Total Project Cost is approximately \$6M. Project features would require minimal operation and maintenance costs. The majority of the features are expected to be below the ordinary high water mark (OHWM). One feature of this project, the access road, may be constructed in part above the OHWM, requiring a non-federal cost share for that feature.