[illegible]

U.S. ARMY ENGINEER DISTRICT CORPS OF ENGINEERS	Designed By:	Date: 02/21/2017
	Drawn By:	File No.
	Checked By:	I.S.O. Sheet File Name:
	Reviewed By:	Solicitation Number:

Sheet  
Reference  
Number  
178 of 301

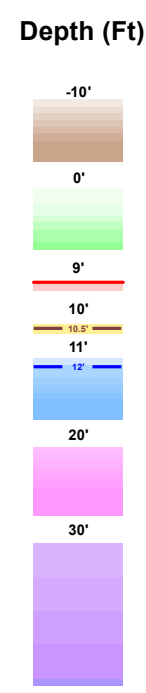
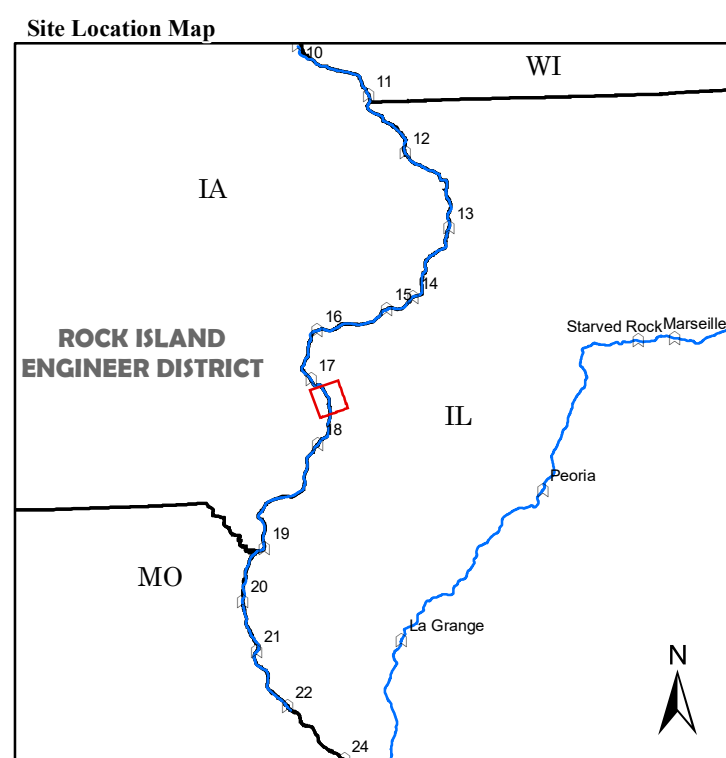
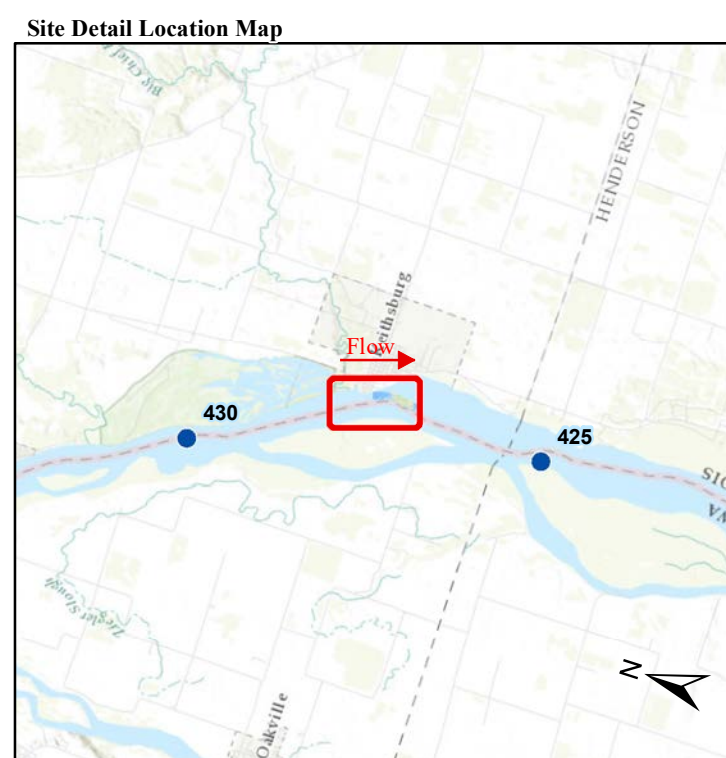
## DOWNSTREAM

**NOTES:**  
Survey Date: August 16, 2017  
Conducted by: Cory B, Alisa B

Survey Vessel: **MV HINDS**  
Flat Pool: **528**  
Water Surface: **530.8**  
Stage: **+2.8**  
Upstream Gage: **Keithsburg RM 427.7**  
Downstream Gage: **Oquawka RM 415.2**

Horizontal Projection: State Plane, NAD 1983  
Illinois West - 1202, U.S. Survey Feet  
Vertical Datum: MSL 1912 U.S. Survey Feet.

Imagery: 2015 USDA NAIP



**River Mile**

- Mile
- Tenth

**River Features**

- Wing Dam Location

**Lights**

- Green
- Red
- White
- Yellow

**Daybeacon**





- ◆ NR: Rhombus, Red and White
- ◆ NG: Rhombus, Green and White
- SG: Square, Green
- ▲ TR: Triangle, Red

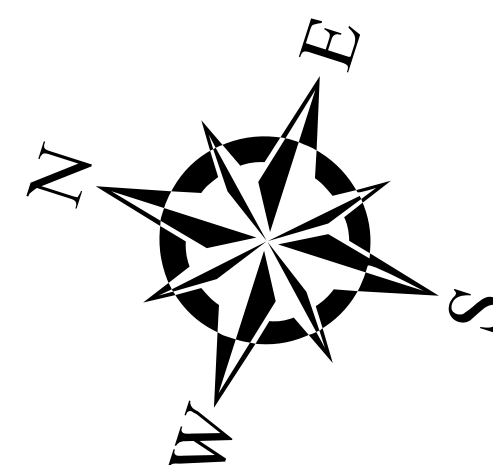
**Lateral Buoys**

 Green

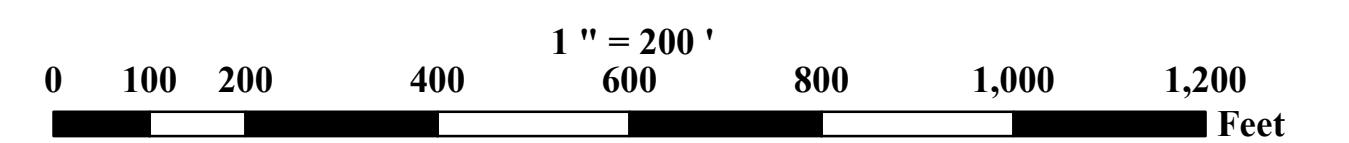
 Red

**Caution Areas**

-  Submerged Pipeline
-  Submerged Pipe Area
-  Submerged Cable
-  Submerged Cable Area



US ARMY CORPS OF ENGINEERS  
ROCK ISLAND DISTRICT  
CEMVR - OD-T  
WATERWAY: UPPER MISSISSIPPI RIVER  
POOL: 18  
REACH: Keithsburg  
REACH MILES: 426.8 to 428  
SURVEY TYPE: PRE\_DREDGE



*SURVEYED RIVER MILES: 426.8-427.5*

*The information depicted on this map represents the results of a survey conducted on the date indicated and can only be considered to represent the general condition existing at that time.*