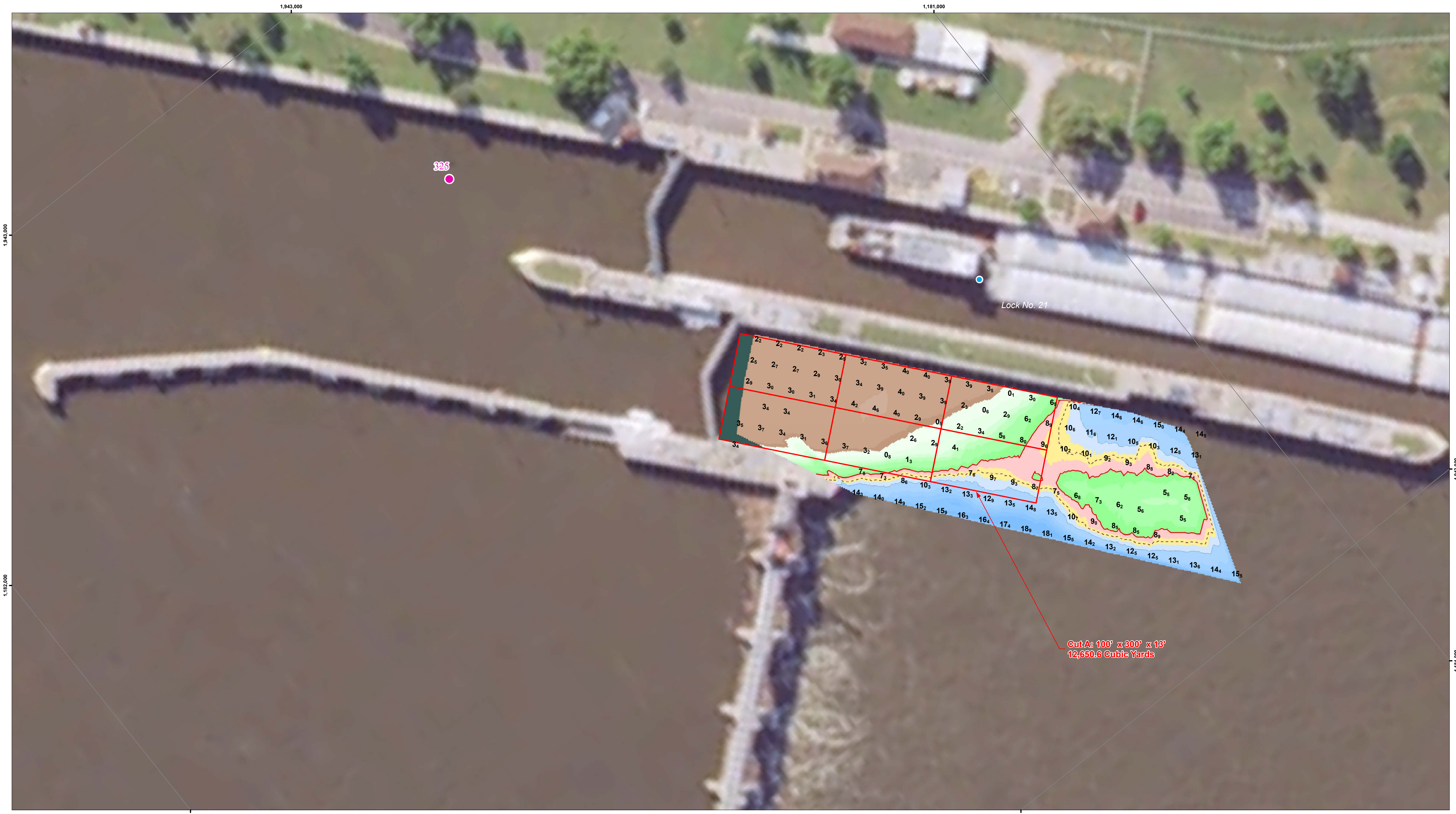


Symbol	Description	Date	Approved

U.S. ARMY ENGINEER DISTRICT CORPS OF ENGINEERS	Designed By:	Date: 7/12/2018
	Drawn By:	File No:
	Checked By:	U.S.O. Sheet File Name:
	Reviewed By:	Solicitation Number:

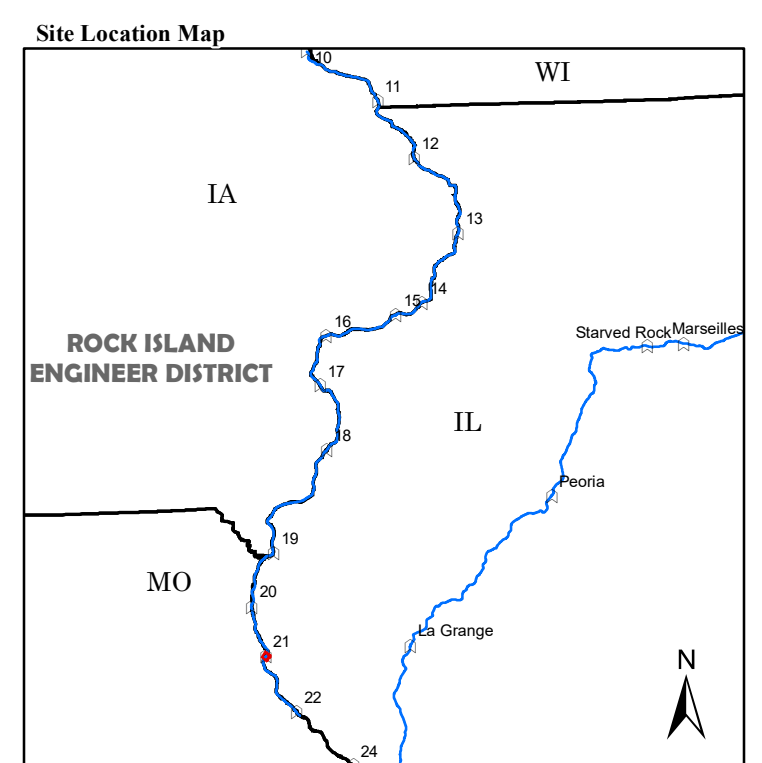
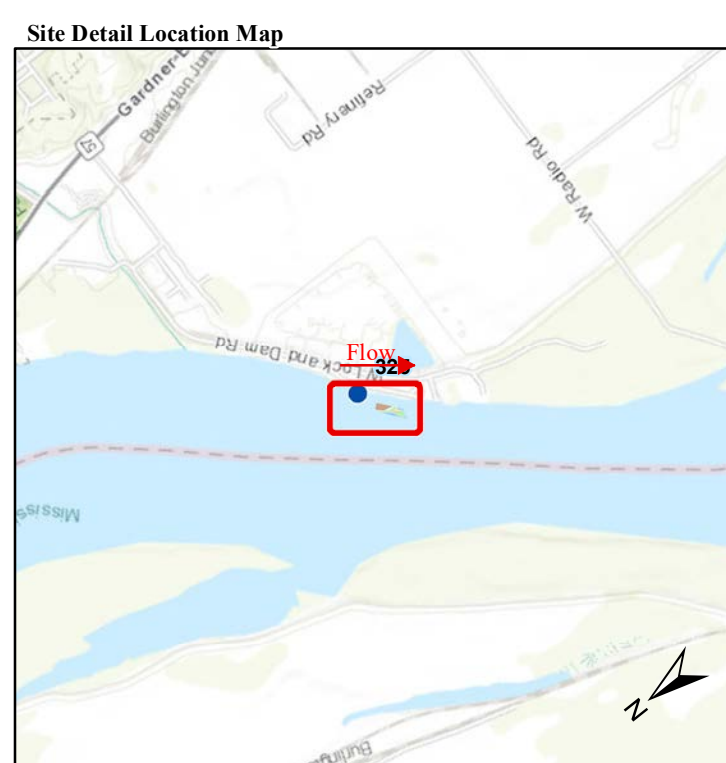
Sheet Reference Number of



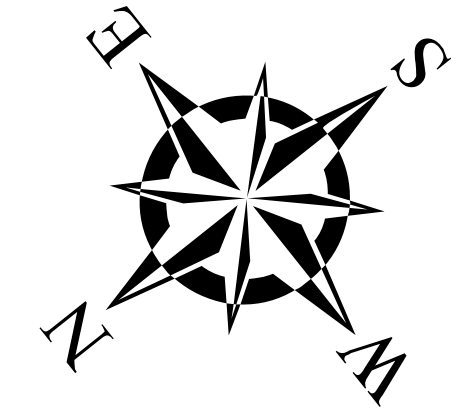
**NOTES:**  
 Survey Date: July 2, 2018  
 Conducted by: C Brenner and B Boydston  
  
 Survey Vessel: Launch Coot  
 Flat Pool: 470  
 Water Surface: 475.8  
 Stage: -16.3  
 Upstream Gage: Lock 21 Tail RM 324.9  
 Downstream Gage: NA

Horizontal Projection: State Plane, NAD 1983  
 Illinois West - 1202, U.S. Survey Feet  
 Vertical Datum: MSL 1912 U.S. Survey Feet  
 Imagery: 2015 USDA NAIP

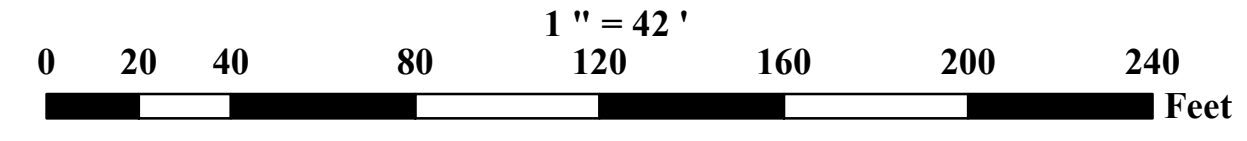
The information depicted on this map represents the results of a survey conducted on the date indicated and can only be considered to represent the general condition existing at that time.



- Depth (Ft)**
  - 10'
  - 0'
  - 9'
  - 10'
  - 11'
  - 20'
  - 30'
  - 50'
- River Mile**
  - Mile
  - Tenth
- River Features**
  - Wing Dam Location
- Lights**
  - Green
  - Red
  - White
  - Yellow
- Daybeacon**
  - NR: Rhombus, Red and White
  - NG: Rhombus, Green and White
  - SG: Square, Green
  - TR: Triangle, Red
- Lateral Buoys**
  - Green
  - Red
- Caution Areas**
  - Submerged Pipeline
  - Submerged Pipe Area
  - Submerged Cable
  - Submerged Cable Area



US ARMY CORPS OF ENGINEERS  
 ROCK ISLAND DISTRICT  
 CEMVR - OD-T  
 WATERWAY: UPPER MISSISSIPPI RIVER  
 POOL: 21  
 REACH: Lock and Dam 21 Upper  
 REACH MILES: 324.6 to 325.7  
 SURVEY TYPE: Pre-Dredge



SURVEYED RIVER MILES: 324.8-324.9

UPSTREAM

DOWNSTREAM