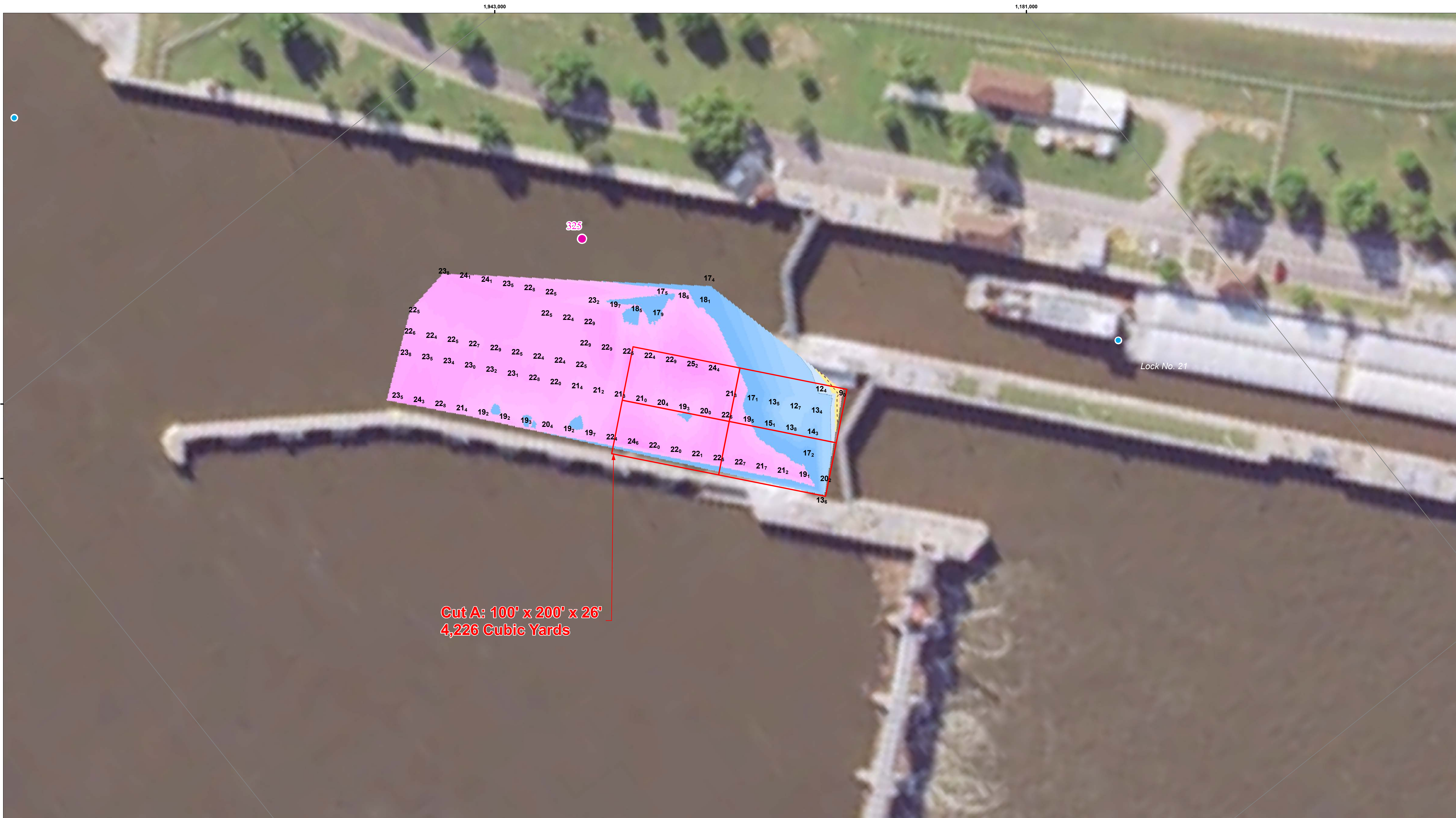
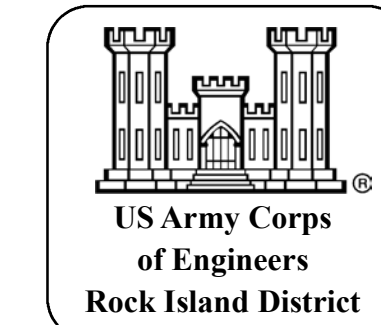


UPSTREAM

DOWNSTREAM



Cut A: 100' x 200' x 26'
4,226 Cubic Yards



Symbol	Description	Date	Approved

U.S. ARMY ENGINEER DISTRICT CORPS OF ENGINEERS	Designed By: Drawn By: Checked By: Reviewed By:	Date: 7/12/2018 File No. U.S.O. Sheet File Name: Solicitation Number:
---	--	--

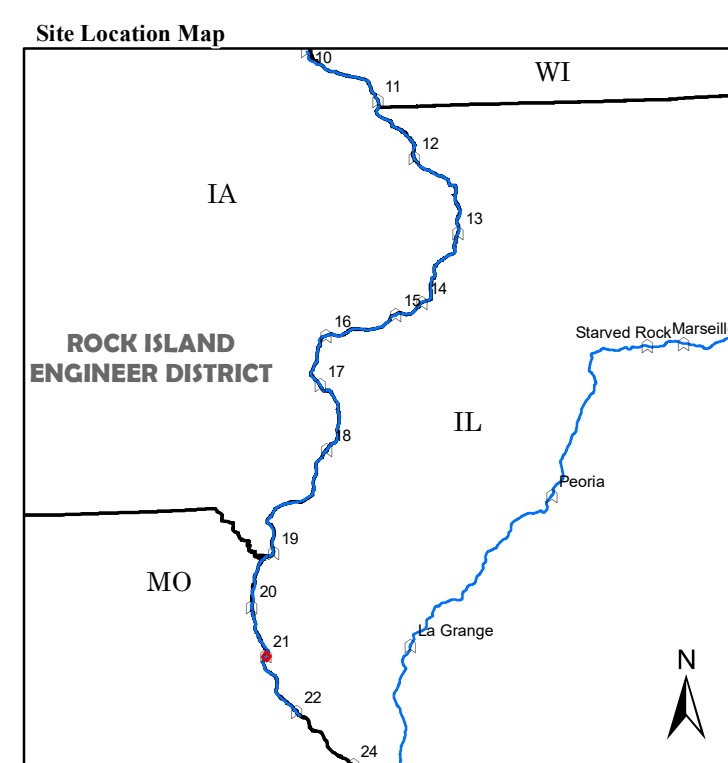
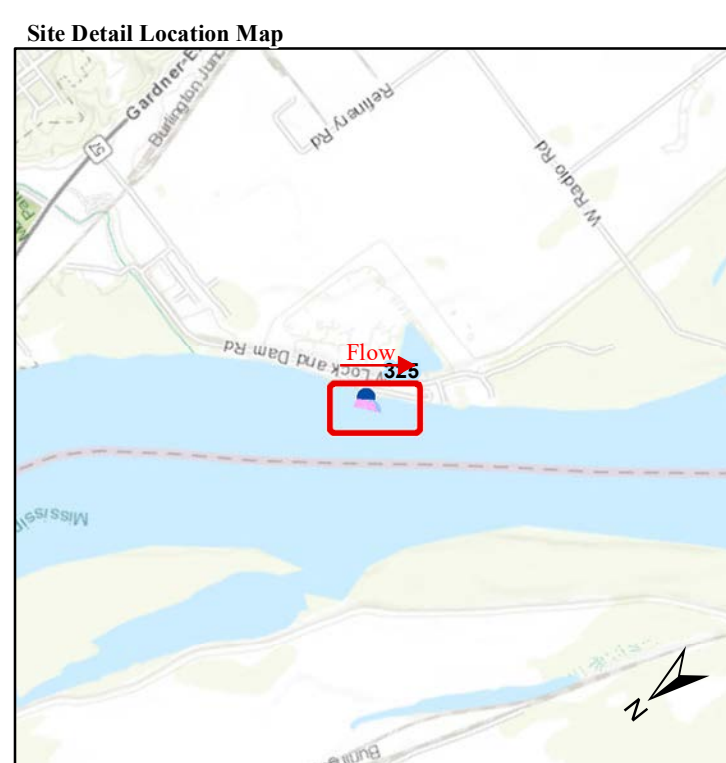
Sheet
Reference
Number
of

NOTES:
 Survey Date: July 2, 2018
 Conducted by: C Brenner and B Boydston

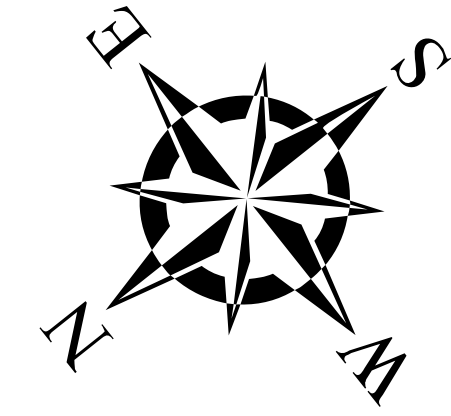
 Survey Vessel: Launch Coot
 Flat Pool: 470
 Water Surface: 476.3
 Stage: -6.3
 Upstream Gauge: Lock 21 Pool RM 324.9
 Downstream Gauge: NA

Horizontal Projection: State Plane, NAD 1983
 Illinois West - 1202, U.S. Survey Feet
 Vertical Datum: MSL 1912 U.S. Survey Feet.
 Imagery: 2015 USDA NAIP

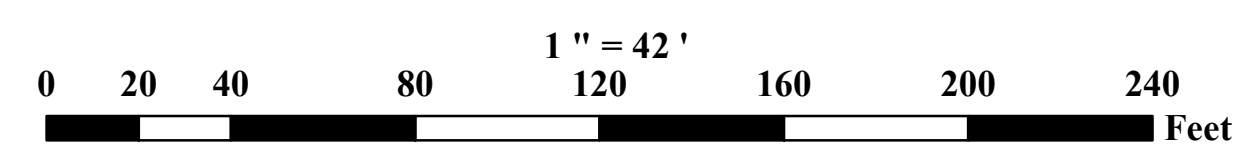
The information depicted on this map represents the results of a survey conducted on the date indicated and can only be considered to represent the general condition existing at that time.



- Depth (Ft)**
 - 10'
 - 0'
 - 9'
 - 10'
 - 11'
 - 20'
 - 30'
 - 50'
- River Mile**
 - Mile
 - Tenth
- River Features**
 - Wing Dam Location
- Lights**
 - Green
 - Red
 - White
 - Yellow
- Daybeacon**
 - NR: Rhombus, Red and White
 - NG: Rhombus, Green and White
 - SG: Square, Green
 - TR: Triangle, Red
- Lateral Buoys**
 - Green
 - Red
- Caution Areas**
 - Submerged Pipeline
 - Submerged Pipe Area
 - Submerged Cable
 - Submerged Cable Area



US ARMY CORPS OF ENGINEERS
 ROCK ISLAND DISTRICT
 CEMVR - OD-T
 WATERWAY: UPPER MISSISSIPPI RIVER
 POOL: 21
 REACH: Lock and Dam 21 Upper
 REACH MILES: 324.6 to 325.7
 SURVEY TYPE: Pre-Dredge



SURVEYED RIVER MILES: 324.9-325.0