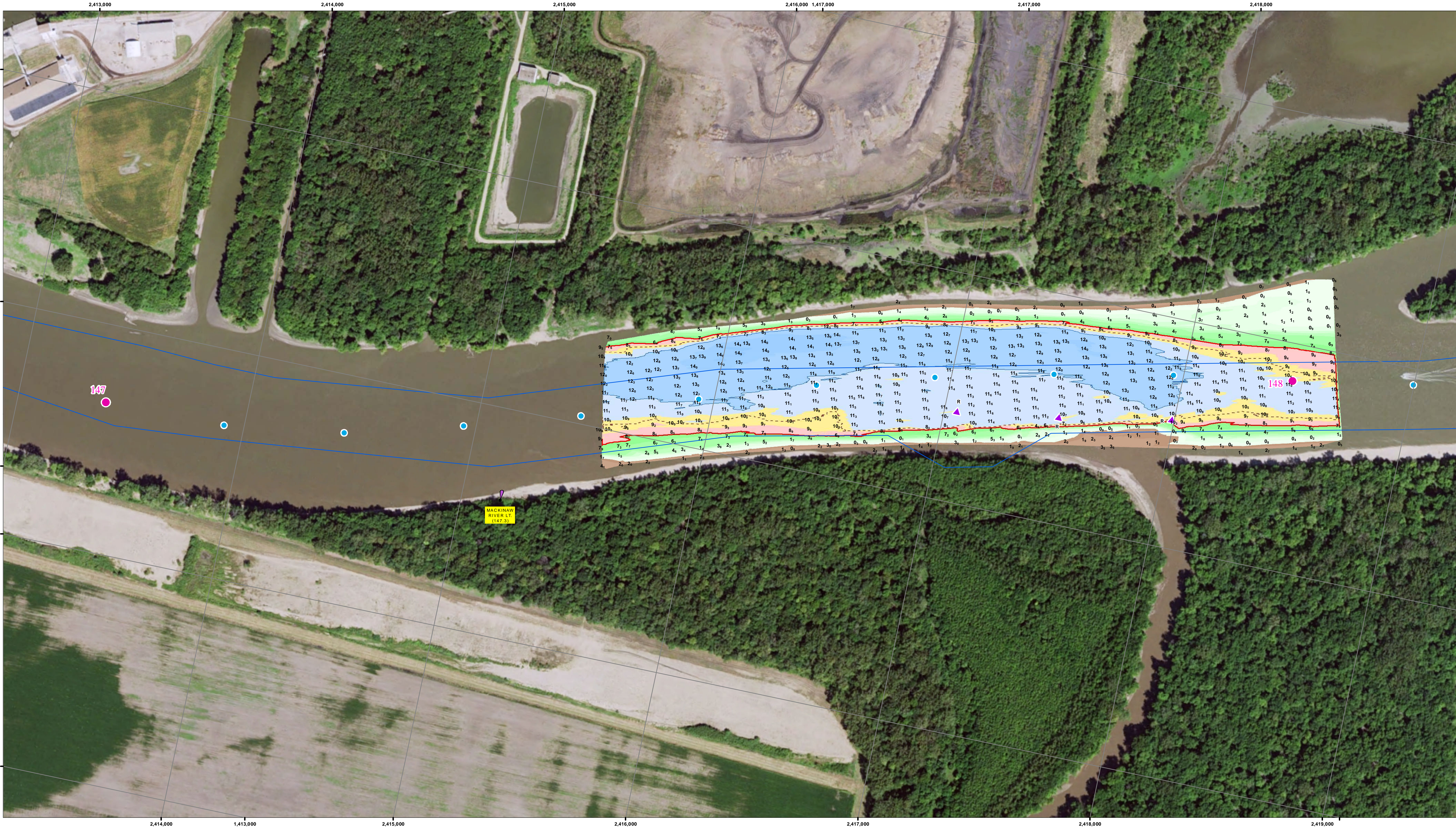


DOWNSTREAM

UPSTREAM



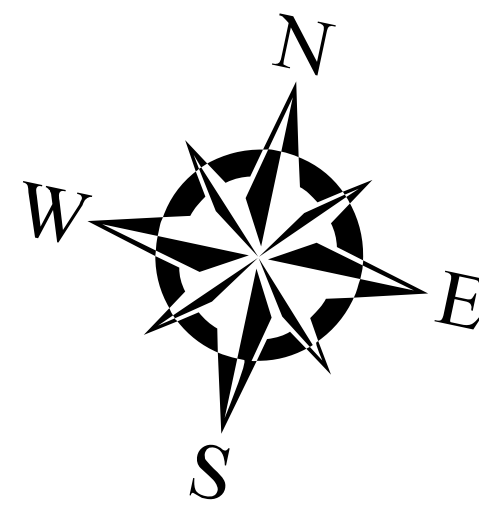
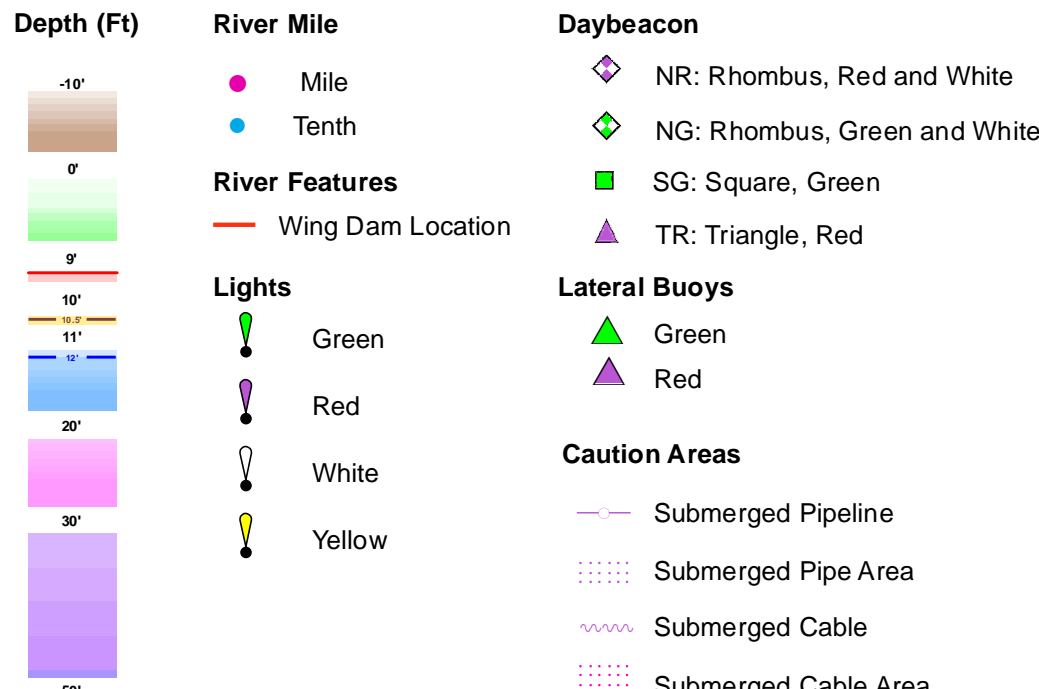
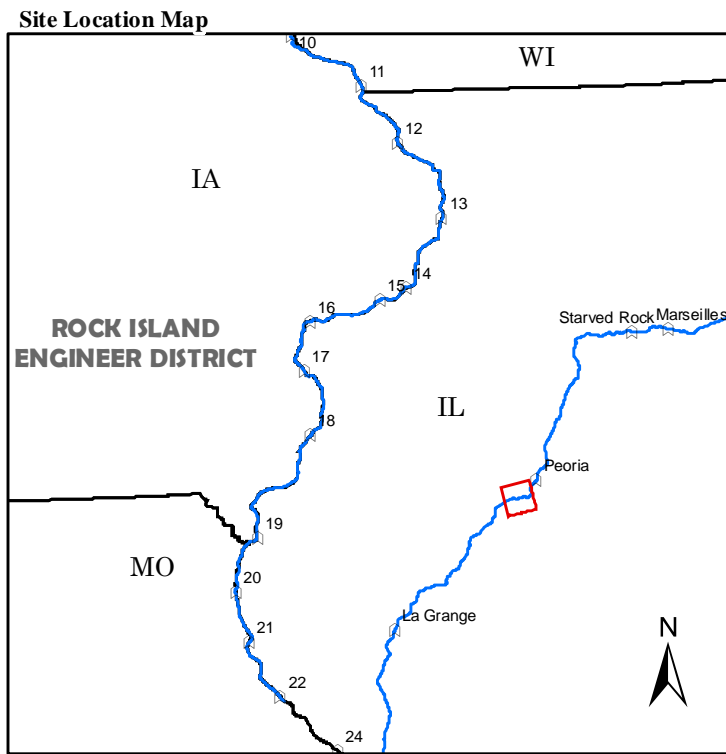
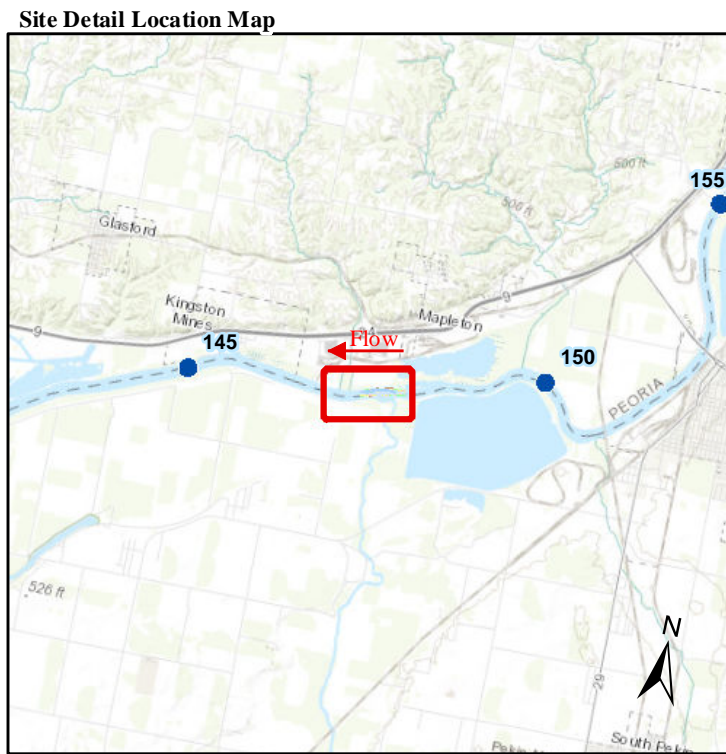
NOTES:
Survey Date: October 10, 2018
Conducted by: Bjorn B, Brad C

Survey Vessel: Launch Coot
Flat Pool: 429'
Water Surface: 438.1
Stage: +8.3
Downstream Gage: Kingston RM 145.5
Upstream Gage: Peoria Lower RM 157.7

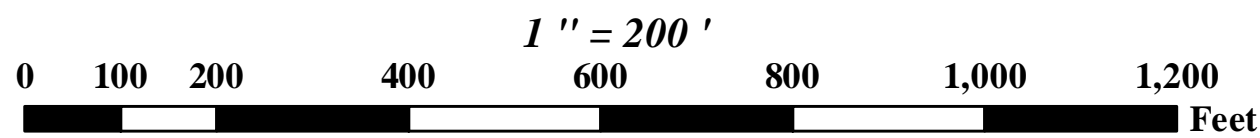
Processed in ArcGIS by: Lawrence Jefferson 10/12/2018
Document Name: IL_LA_MVR_20181010_CS_14741481_18D

Horizontal Projection: State Plane, NAD 1983
Illinois West - 1202, U.S. Survey Feet
Vertical Datum: NGVD 1929 U.S. Survey Feet.
Imagery: 2015 USDA NAIP

The information depicted on this map represents the results of a survey conducted on the date indicated and can only be considered to represent the general condition existing at that time.



US ARMY CORPS OF ENGINEERS
ROCK ISLAND DISTRICT
CEMVR - OD-T
WATERWAY: ILLINOIS WATERWAY
POOL: LaGrange
REACH: Mackinaw River
REACH MILES: 146.9 to 148.1
SURVEY TYPE: CONDITION



SURVEYED RIVER MILES: 147.4-148.1



Symbol	Description	Date	Approved
	Map Document Grid 1: 1000' x 1000'		

U.S. ARMY ENGINEER DISTRICT CORPS OF ENGINEERS	Designed By: Drawn By: Checked By: Reviewed By:	Date: 10/12/2018 File No. U.S.O. Sheet File Name: Solicitation Number:
---	--	---

Sheet
Reference
Number
80 of 223