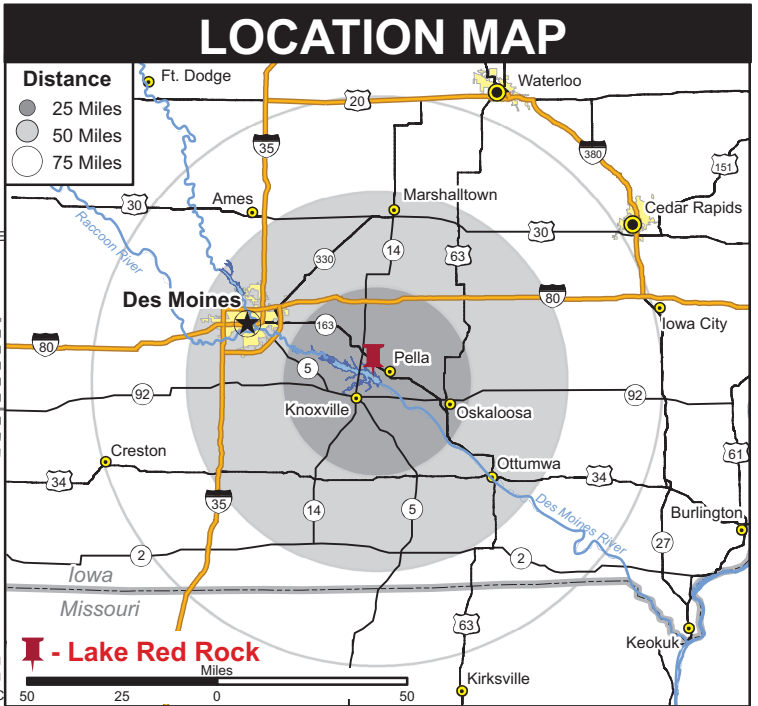
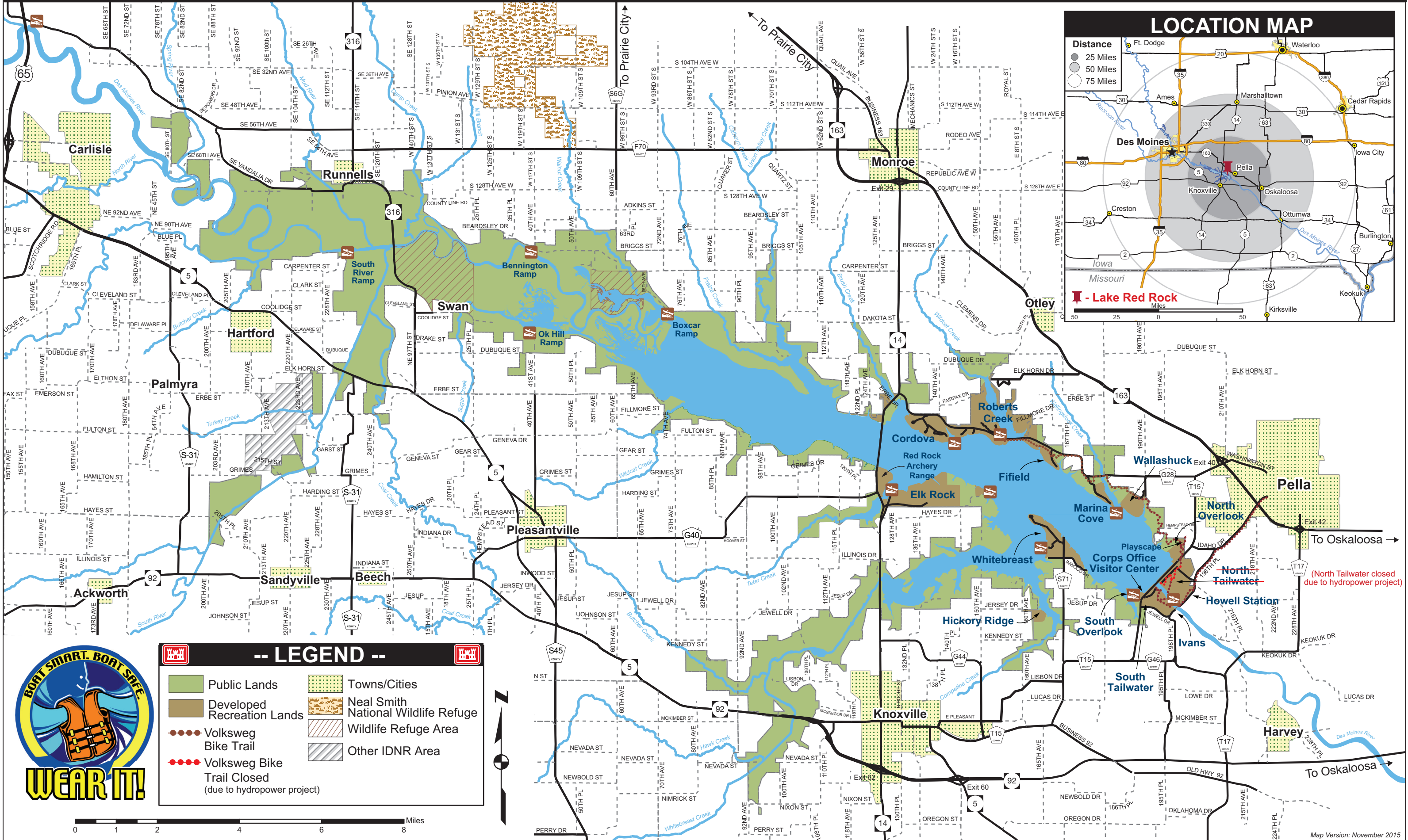




US Army Corps
of Engineers®
Rock Island District

Lake Red Rock

Area Map

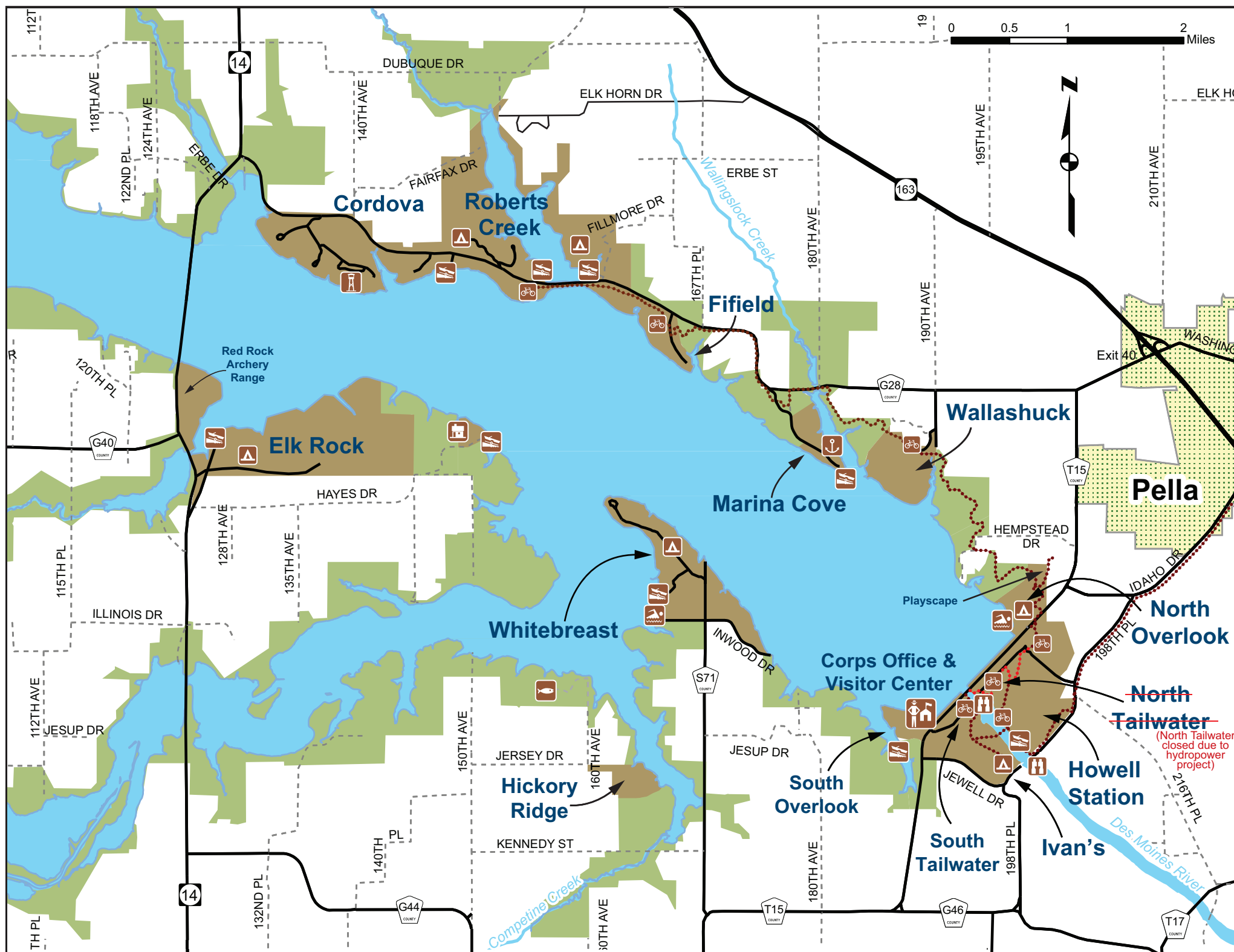


-- LEGEND --

Public Lands	Towns/Cities
Developed Recreation Lands	Neal Smith National Wildlife Refuge
Volksweg Bike Trail	Wildlife Refuge Area
Volksweg Bike Trail Closed (due to hydropower project)	Other IDNR Area



(North Tailwater closed due to hydropower project)



Welcome to Iowa's Largest Lake



Lake Red Rock has over 15,000 surface acres of water at normal conservation pool, which is 742 feet above sea level. Located on the Des Moines River just 45 miles southeast and downriver from Des Moines, the reservoir collects runoff and drainage from over 12,320 square miles of Iowa and southern Minnesota land. This protects communities and agriculture lands downstream from the Red Rock Dam. The maximum flood control pool is 780 feet above sea level, over 33 miles long, and covers 65,500 acres. Other lake area benefits include numerous recreational opportunities and natural resources on the water and surrounding public lands.

Visitor Center

The Visitor Center, located at the south end of the dam, has many interesting displays and exhibits. Local and regional camping and travel information is available.

New Visitor Center Hours:

January	Closed	Memorial Day - Labor Day	Daily	9:30 a.m. - 6:00 p.m.
February	Closed	September	Sat./Sun.	9:30 a.m. - 6:00 p.m.
March		October	Sat./Sun.	12:00 p.m. - 4:00 p.m.
Sat./Sun.	12:00 p.m. - 4:00 p.m.	November		Closed
April		December		Closed
Sat./Sun.	12:00 p.m. - 4:00 p.m.			
May				
M-F	12:00 p.m. - 4:00 p.m.			
Sat./Sun.	9:30 a.m. - 6:00 p.m.			



Legend

- Towns/ Cities
- Gravel Roads
- Paved Roadways
- Volksweg Bike Trail
- Volksweg Bike Trail Closed (due to hydropower project)
- US Army Corps of Engineers Lake Red Rock Project Office
- Public Lands
- Developed Recreation Areas
- Campground
- Marina
- Boat Ramp
- Fishing Pond
- Watchable Wildlife Area
- Cordova Park Tower
- Volksweg Trailhead

Emergency/Information

- All Emergency Services..... dial 911
- US Army Corps of Engineers**
Lake Red Rock Project
1105 Hwy T15, Knoxville, IA 50138
(641) 828-7522 or (641) 628-8690
www.lakeredrock.org
www.facebook.com/lakeredrock
 - Elk Rock State Park**
Park Ranger
811 146th Avenue
Knoxville, IA 50138
(641) 842-6008
www.iowadnr.com
 - Roberts Creek County Park**
Park Ranger
1617 Fillmore Avenue
Otley, IA 50214
(641) 627-5507
 - Cordova County Park**
Park Ranger
County Naturalist
1378 Highway G-28
Otley, IA 50214
(641) 627-5935

Parks	Boat Ramp	Bicycle Trail	Camping	Primitive Camping	Dump Stations	Electrical Sites	Fish Cleaning Stations	Group Camp Areas	Hiking Trail	Horse Trails	Information	Rental Cabins	Marina	Picnic Areas	Playground	Restrooms	Showers	Swimming Beach	Water
Fifield																			
Hickory Ridge																			
Howell Station																			
Ivan's																			
Marina Cove																			
North Overlook																			
North Tailwater																			
South Overlook																			
South Tailwater																			
Wallashuck																			
Whitebreast																			
Visitor Center																			
Elk Rock																			
Cordova																			
Roberts Creek																			

- Corps Managed Area
- State Managed Area
- Marion County Managed Area
- Indicates Mobility Impaired Facilities Available

To reserve a campsite at Lake Red Rock:
www.recreation.gov (Corps managed)
www.reserveiaparks.com (IDNR Managed)
www.mycountyparks.com (Roberts Creek)