



U.S. ARMY CORPS OF ENGINEERS
REGULATORY PROGRAM
APPROVED JURISDICTIONAL DETERMINATION FORM (INTERIM)
NAVIGABLE WATERS PROTECTION RULE

I. ADMINISTRATIVE INFORMATION

Completion Date of Approved Jurisdictional Determination (AJD): 20-JAN-2021

ORM Number: MVR-2020-01735-AM

Associated JDs: N/A or ORM numbers and identifiers (e.g. HQS-2020-00001-MSW-MITSITE)

Review Area Location¹:

State/Territory: IA City: County/Parish/Borough: Woodbury County

Center Coordinates of Review Area: Latitude 42.225711 Longitude -95.920854

II. FINDINGS

A. Summary: Check all that apply. At least one box from the following list **MUST** be selected. Complete the corresponding sections/tables and summarize data sources.

- ☒ The review area is comprised entirely of dry land (i.e., there are no waters or water features, including wetlands, of any kind in the entire review area). Rationale: N/A or describe rationale.
- ☐ There are "navigable waters of the United States" within Rivers and Harbors Act jurisdiction within the review area (complete table in section II.B).
- ☐ There are "waters of the United States" within Clean Water Act jurisdiction within the review area (complete appropriate tables in section II.C).
- ☐ There are waters or water features excluded from Clean Water Act jurisdiction within the review area (complete table in section II.D).

B. Rivers and Harbors Act of 1899 Section 10 (§ 10)²

§ 10 Name	§ 10 Size	§ 10 Criteria	Rationale for § 10 Determination
N/A	N/A	N/A	N/A

C. Clean Water Act Section 404

Territorial Seas and Traditional Navigable Waters ((a)(1) waters)³

(a)(1) Name	(a)(1) Size	(a)(1) Criteria	Rationale for (a)(1) Determination
N/A	N/A	N/A	N/A

Tributaries ((a)(2) waters):

(a)(2) Name	(a)(2) Size	(a)(2) Criteria	Rationale for (a)(2) Determination
N/A	N/A	N/A	N/A

Lakes and ponds, and impoundments of jurisdictional waters ((a)(3) waters):

(a)(3) Name	(a)(3) Size	(a)(3) Criteria	Rationale for (a)(3) Determination
N/A	N/A	N/A	N/A

Adjacent wetlands ((a)(4) waters):

(a)(4) Name	(a)(4) Size	(a)(4) Criteria	Rationale for (a)(4) Determination
N/A	N/A	N/A	N/A

¹ Map(s)/Figure(s) are attached to the AJD provided to the requestor.

² If the navigable water is not subject to the ebb and flow of the tide or included on the District's list of Rivers and Harbors Act Section 10 navigable waters list, do NOT use this document to make the determination. The District must continue to follow the procedure outlined in 33 CFR part 329.14 to make a Rivers and Harbors Act Section 10 navigability determination.

³ A stand-alone TNW determination is completed independently of a request for an AJD. A stand-alone TNW determination is conducted for a specific segment of river or stream or other type of waterbody, such as a lake, where independent upstream or downstream limits or lake borders are established. A stand-alone TNW determination should be completed following applicable guidance and should NOT be documented on the AJD form.

⁴ Some excluded waters, such as (b)(2) and (b)(4), may not be specifically identified on the AJD form unless a requestor specifically asks a Corps district to do so. Corps Districts may, in case-by-case instances, choose to identify some or all of these waters within the review area.

⁵ Because of the broad nature of the (b)(1) exclusion and in an effort to collect data on specific types of waters that would be covered by the (b)(1) exclusion, four sub-categories of (b)(1) exclusions were administratively created for the purposes of the AJD Form. These four sub-categories are not new exclusions, but are simply administrative distinctions and remain (b)(1) exclusions as defined by the NWPR.



U.S. ARMY CORPS OF ENGINEERS
REGULATORY PROGRAM
APPROVED JURISDICTIONAL DETERMINATION FORM (INTERIM)
NAVIGABLE WATERS PROTECTION RULE

D. Excluded Waters or Features

Excluded waters ((b)(1) – (b)(12))⁴:

Exclusion Name	Exclusion Size	Exclusion ⁵	Rationale for Exclusion Determination
N/A	N/A	N/A	N/A

III. SUPPORTING INFORMATION

A. Select/enter all resources that were used to aid in this determination and attach data/maps to this document and/or references/citations in the administrative record, as appropriate.

☒ Information submitted by, or on behalf of, the applicant/consultant: *Title(s) and date(s)*.

This information is not sufficient for purposes of this AJD.

Rationale: Additional work utilizing GIS Aerials was needed to determine the presence of wetlands

☐ Data sheets prepared by the Corps: *Title(s) and/or date(s)*.

☒ Photographs: *Regulatory Viewer Aerials and LIDAR, January 2021; Project Area Map, Jan 20201*

☐ Corps Site visit(s) conducted on: *Date(s)*.

☐ Previous Jurisdictional Determinations (AJDs or PJDs): *ORM Number(s) and date(s)*.

☐ Antecedent Precipitation Tool: *provide detailed discussion in Section III.B.*

☒ USDA NRCS Soil Survey: *Regulatory Viewer Hydric Soils Layer, January 2021*

☒ USFWS NWI maps: *Regulatory Viewer NWI Layer, January 2021*

☒ USGS topographic maps: *Regulatory Viewer Topo layer, January 2021*

Other data sources used to aid in this determination:

Data Source (select)	Name and/or date and other relevant information
USGS Sources	Regulatory Viewer NHD layer, January 2021
USDA Sources	N/A.
NOAA Sources	N/A.
USACE Sources	N/A.
State/Local/Tribal Sources	N/A.
Other Sources	US Drought Monitor, January 2021

B. Typical year assessment(s): The Antecedent Precipitation Tool's dataset was showing errors but the US Drought Monitor shows this area of Woodbury County in a severe drought.

C. Additional comments to support AJD: This AJD is for the two locations shows on the project area map. There are no indications that there are any aquatic resources in these locations. The USGS' topographic maps and NHD layers, the USFWS' NWI layer, and the NRCS' hydric soils layer all had no indication of aquatic resources on these two locations.

¹ Map(s)/Figure(s) are attached to the AJD provided to the requestor.

² If the navigable water is not subject to the ebb and flow of the tide or included on the District's list of Rivers and Harbors Act Section 10 navigable waters list, do NOT use this document to make the determination. The District must continue to follow the procedure outlined in 33 CFR part 329.14 to make a Rivers and Harbors Act Section 10 navigability determination.

³ A stand-alone TNW determination is completed independently of a request for an AJD. A stand-alone TNW determination is conducted for a specific segment of river or stream or other type of waterbody, such as a lake, where independent upstream or downstream limits or lake borders are established. A stand-alone TNW determination should be completed following applicable guidance and should NOT be documented on the AJD form.

⁴ Some excluded waters, such as (b)(2) and (b)(4), may not be specifically identified on the AJD form unless a requestor specifically asks a Corps district to do so. Corps Districts may, in case-by-case instances, choose to identify some or all of these waters within the review area.


⁵ Because of the broad nature of the (b)(1) exclusion and in an effort to collect data on specific types of waters that would be covered by the (b)(1) exclusion, four sub-categories of (b)(1) exclusions were administratively created for the purposes of the AJD Form. These four sub-categories are not new exclusions, but are simply administrative distinctions and remain (b)(1) exclusions as defined by the NWPR.

Project Area Map

MVR-2020-1735
Dated: January 20, 2021

Legend

 42.225711, -95.920854

 Project Area




42.225711, -95.920854

330th St



Rock Island District Regulatory Viewer

Digital Global Link 

Regulatory Viewer Regulatory Map Compliance Viewer IPaC I-Sites Mitigation Banking IL IAS

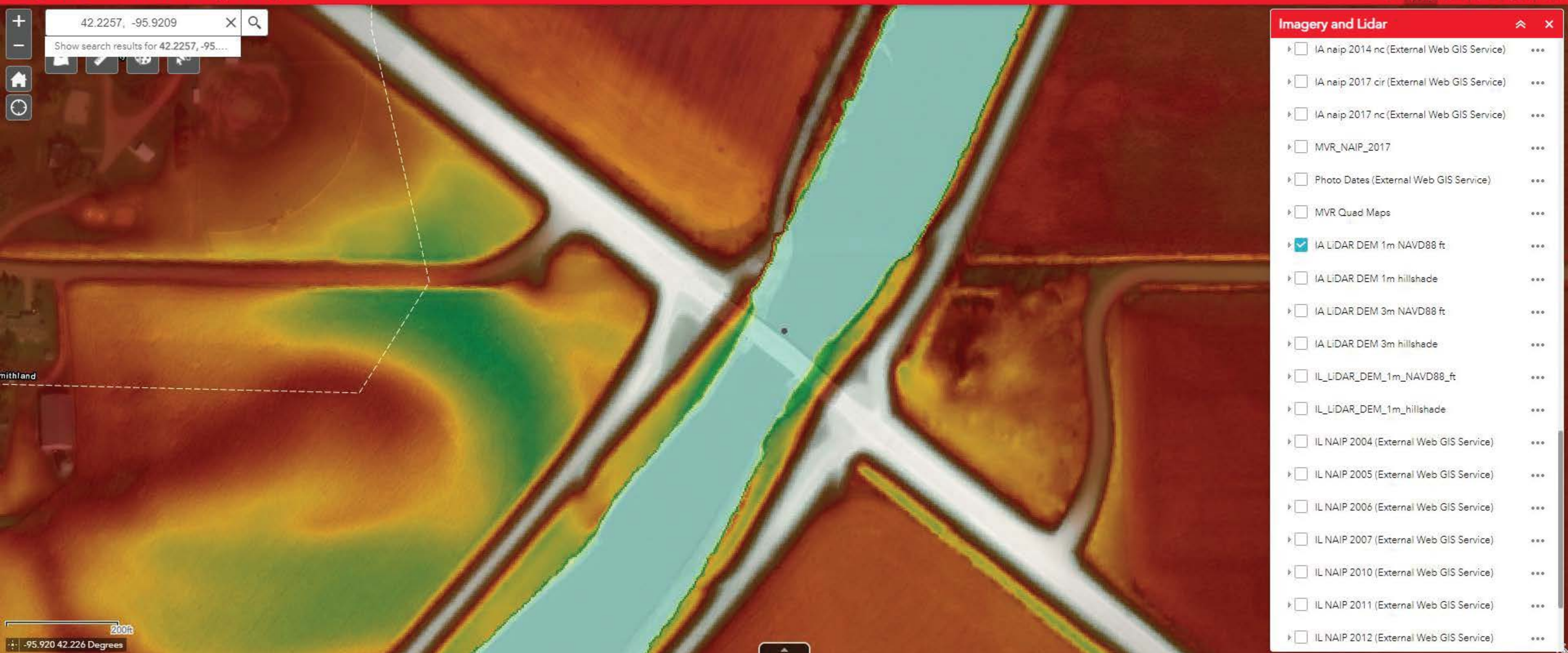
Rock Island District Regulatory Viewer




Rock Island District Regulatory Viewer

Regulatory Viewer Regulatory Map Compliance Viewer IPaC I-Sites Mitigation Banking IL IAS

Rock Island District Regulatory Viewer

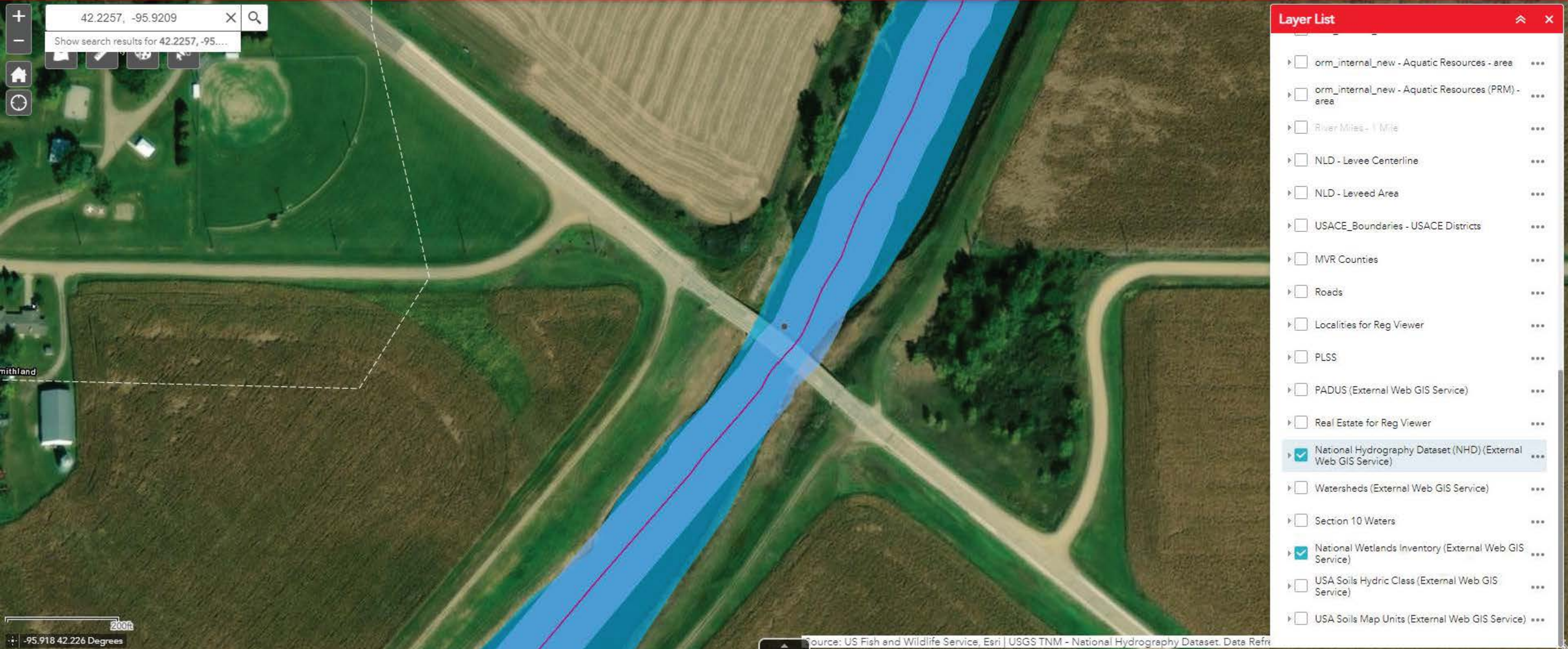


Rock Island District Regulatory Viewer


Digital Global Link 

Regulatory Viewer Regulatory Map Compliance Viewer IPaC I-Sites Mitigation Banking IL IAS

Rock Island District Regulatory Viewer

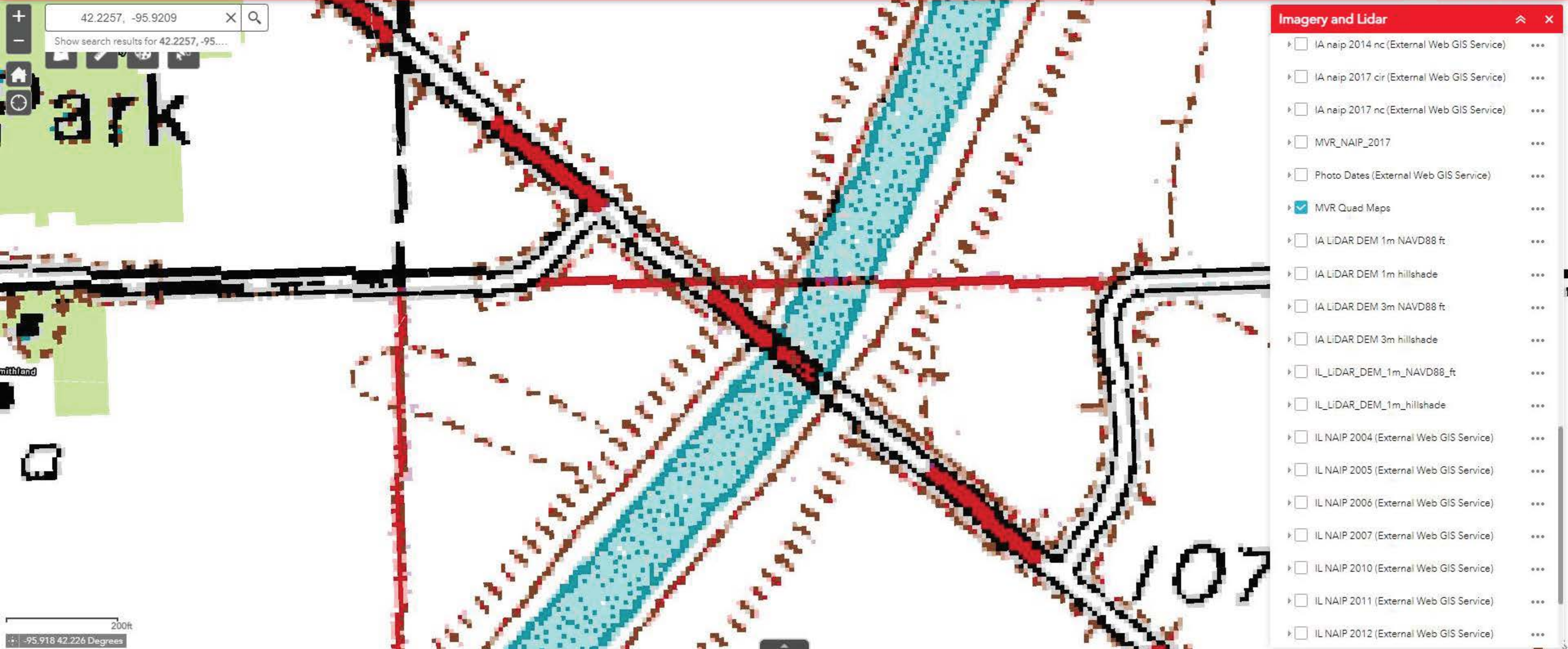


Rock Island District Regulatory Viewer

Digital Global Link 

Regulatory Viewer Regulatory Map Compliance Viewer IPaC I-Sites Mitigation Banking IL IAS

Rock Island District Regulatory Viewer      










- ### Imagery and Lidar
- ☐ IA naip 2014 nc (External Web GIS Service) ...
 - ☐ IA naip 2017 cir (External Web GIS Service) ...
 - ☐ IA naip 2017 nc (External Web GIS Service) ...
 - ☐ MVR_NAIP_2017 ...
 - ☐ Photo Dates (External Web GIS Service) ...
 - ☒ MVR Quad Maps ...
 - ☐ IA LiDAR DEM 1m NAVD88 ft ...
 - ☐ IA LiDAR DEM 1m hillshade ...
 - ☐ IA LiDAR DEM 3m NAVD88 ft ...
 - ☐ IA LiDAR DEM 3m hillshade ...
 - ☐ IL_LiDAR_DEM_1m_NAVD88_ft ...
 - ☐ IL_LiDAR_DEM_1m_hillshade ...
 - ☐ IL NAIP 2004 (External Web GIS Service) ...
 - ☐ IL NAIP 2005 (External Web GIS Service) ...
 - ☐ IL NAIP 2006 (External Web GIS Service) ...
 - ☐ IL NAIP 2007 (External Web GIS Service) ...
 - ☐ IL NAIP 2010 (External Web GIS Service) ...
 - ☐ IL NAIP 2011 (External Web GIS Service) ...
 - ☐ IL NAIP 2012 (External Web GIS Service) ...

Iowa

[Current Map](#) > [Iowa](#)**Map released: Thurs. January 14, 2021**

Data valid: January 12, 2021 at 7 a.m. EST

Intensity:

-  None
-  D0 (Abnormally Dry)
-  D1 (Moderate Drought)
-  D2 (Severe Drought)
-  D3 (Extreme Drought)
-  D4 (Exceptional Drought)
-  No Data

Author(s):**Deborah Bathke**, National Drought Mitigation Center

The Drought Monitor focuses on broad-scale conditions. Local conditions may vary. See accompanying [text summary](#) for forecast statements.

Map Download

No text:

