



U.S. ARMY CORPS OF ENGINEERS
REGULATORY PROGRAM
APPROVED JURISDICTIONAL DETERMINATION FORM (INTERIM)
NAVIGABLE WATERS PROTECTION RULE

I. ADMINISTRATIVE INFORMATION

Completion Date of Approved Jurisdictional Determination (AJD): 24 FEB-2021

ORM Number: MVR-2021-00097-KB

Associated JDs: N/A

Review Area Location¹:

State/Territory: IA City: Polk City County/Parish/Borough: Polk County

Center Coordinates of Review Area: Latitude 41.792197 Longitude -93.719257

II. FINDINGS

A. Summary: Check all that apply. At least one box from the following list **MUST** be selected. Complete the corresponding sections/tables and summarize data sources.

- ☐ The review area is comprised entirely of dry land (i.e., there are no waters or water features, including wetlands, of any kind in the entire review area). Rationale: N/A or describe rationale.
- ☐ There are "navigable waters of the United States" within Rivers and Harbors Act jurisdiction within the review area (complete table in section II.B).
- ☐ There are "waters of the United States" within Clean Water Act jurisdiction within the review area (complete appropriate tables in section II.C).
- ☒ There are waters or water features excluded from Clean Water Act jurisdiction within the review area (complete table in section II.D).

B. Rivers and Harbors Act of 1899 Section 10 (§ 10)²

§ 10 Name	§ 10 Size	§ 10 Criteria	Rationale for § 10 Determination
N/A	N/A	N/A	N/A

C. Clean Water Act Section 404

Territorial Seas and Traditional Navigable Waters ((a)(1) waters)³

(a)(1) Name	(a)(1) Size	(a)(1) Criteria	Rationale for (a)(1) Determination
N/A	N/A	N/A	N/A

Tributaries ((a)(2) waters):

(a)(2) Name	(a)(2) Size	(a)(2) Criteria	Rationale for (a)(2) Determination
N/A	N/A	N/A	N/A

Lakes and ponds, and impoundments of jurisdictional waters ((a)(3) waters):

(a)(3) Name	(a)(3) Size	(a)(3) Criteria	Rationale for (a)(3) Determination
N/A	N/A	N/A	N/A

Adjacent wetlands ((a)(4) waters):

(a)(4) Name	(a)(4) Size	(a)(4) Criteria	Rationale for (a)(4) Determination
N/A	N/A	N/A	N/A

¹ Map(s)/Figure(s) are attached to the AJD provided to the requestor.

² If the navigable water is not subject to the ebb and flow of the tide or included on the District's list of Rivers and Harbors Act Section 10 navigable waters list, do NOT use this document to make the determination. The District must continue to follow the procedure outlined in 33 CFR part 329.14 to make a Rivers and Harbors Act Section 10 navigability determination.

³ A stand-alone TNW determination is completed independently of a request for an AJD. A stand-alone TNW determination is conducted for a specific segment of river or stream or other type of waterbody, such as a lake, where independent upstream or downstream limits or lake borders are established. A stand-alone TNW determination should be completed following applicable guidance and should NOT be documented on the AJD form.

⁴ Some excluded waters, such as (b)(2) and (b)(4), may not be specifically identified on the AJD form unless a requestor specifically asks a Corps district to do so. Corps Districts may, in case-by-case instances, choose to identify some or all of these waters within the review area.

⁵ Because of the broad nature of the (b)(1) exclusion and in an effort to collect data on specific types of waters that would be covered by the (b)(1) exclusion, four sub-categories of (b)(1) exclusions were administratively created for the purposes of the AJD Form. These four sub-categories are not new exclusions, but are simply administrative distinctions and remain (b)(1) exclusions as defined by the NWPR.



U.S. ARMY CORPS OF ENGINEERS
REGULATORY PROGRAM
APPROVED JURISDICTIONAL DETERMINATION FORM (INTERIM)
NAVIGABLE WATERS PROTECTION RULE

D. Excluded Waters or Features

Excluded waters ((b)(1) – (b)(12))⁴:

Exclusion Name	Exclusion Size	Exclusion ⁵	Rationale for Exclusion Determination
2021-97 Ephemeral stream	1960 feet	(b)(3) Ephemeral feature, including an ephemeral stream, swale, gully, rill, or pool	OHW and bed and bank faintly visible in site photos. No water present in photo taken 12-10-2020. High in the watershed. Small drainage area.
2021-97 Erosional feature	405 feet	(b)(3) Ephemeral feature, including an ephemeral stream, swale, gully, rill, or pool	OHW and bed and bank faintly visible in site photos. No water present in photo taken 12-10-2020. High in the watershed. Small drainage area.

III. SUPPORTING INFORMATION

A. Select/enter all resources that were used to aid in this determination and attach data/maps to this document and/or references/citations in the administrative record, as appropriate.

☒ Information submitted by, or on behalf of, the applicant/consultant: *Shive-Hattery maps & photos*

This information is sufficient for purposes of this AJD.

Rationale: *N/A*.

Data sheets prepared by the Corps: *N/A*

☒ Photographs: *(NA, aerial, other, aerial and other) Google Earth & Site photos dated Dec 10, 2020.*

☐ Corps Site visit(s) conducted on: *N/A*

☐ Previous Jurisdictional Determinations (AJDs or PJDs): *N/A*

☐ Antecedent Precipitation Tool: *N/A provide detailed discussion in Section III.B.*

☐ USDA NRCS Soil Survey: *N/A*

☒ USFWS NWI maps: *Provided by Shive-Hattery*

☒ USGS topographic maps: *Provided by Shive-Hattery*

Other data sources used to aid in this determination:

Data Source (select)	Name and/or date and other relevant information
USGS Sources	N/A.
USDA Sources	N/A.
NOAA Sources	N/A.
USACE Sources	N/A.
State/Local/Tribal Sources	N/A.
Other Sources	N/A.

B. Typical year assessment(s): *N/A.*

C. Additional comments to support AJD: See attachments.

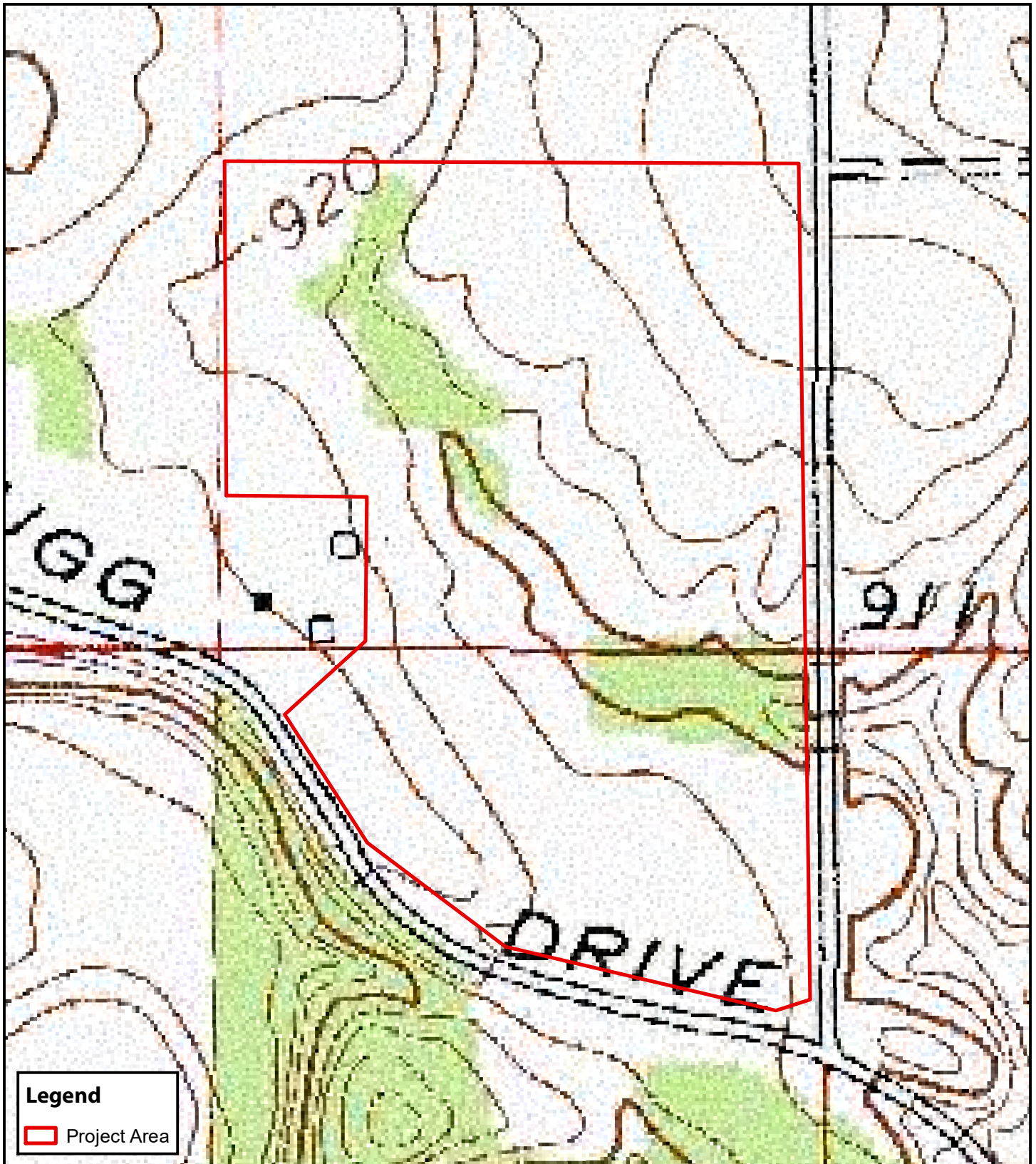
¹ Map(s)/Figure(s) are attached to the AJD provided to the requestor.

² If the navigable water is not subject to the ebb and flow of the tide or included on the District's list of Rivers and Harbors Act Section 10 navigable waters list, do NOT use this document to make the determination. The District must continue to follow the procedure outlined in 33 CFR part 329.14 to make a Rivers and Harbors Act Section 10 navigability determination.

³ A stand-alone TNW determination is completed independently of a request for an AJD. A stand-alone TNW determination is conducted for a specific segment of river or stream or other type of waterbody, such as a lake, where independent upstream or downstream limits or lake borders are established. A stand-alone TNW determination should be completed following applicable guidance and should NOT be documented on the AJD form.

⁴ Some excluded waters, such as (b)(2) and (b)(4), may not be specifically identified on the AJD form unless a requestor specifically asks a Corps district to do so. Corps Districts may, in case-by-case instances, choose to identify some or all of these waters within the review area.

⁵ Because of the broad nature of the (b)(1) exclusion and in an effort to collect data on specific types of waters that would be covered by the (b)(1) exclusion, four sub-categories of (b)(1) exclusions were administratively created for the purposes of the AJD Form. These four sub-categories are not new exclusions, but are simply administrative distinctions and remain (b)(1) exclusions as defined by the NWPR.



Legend

Project Area

SHIVEHATTERY
ARCHITECTURE+ENGINEERING

0 150 300
Feet

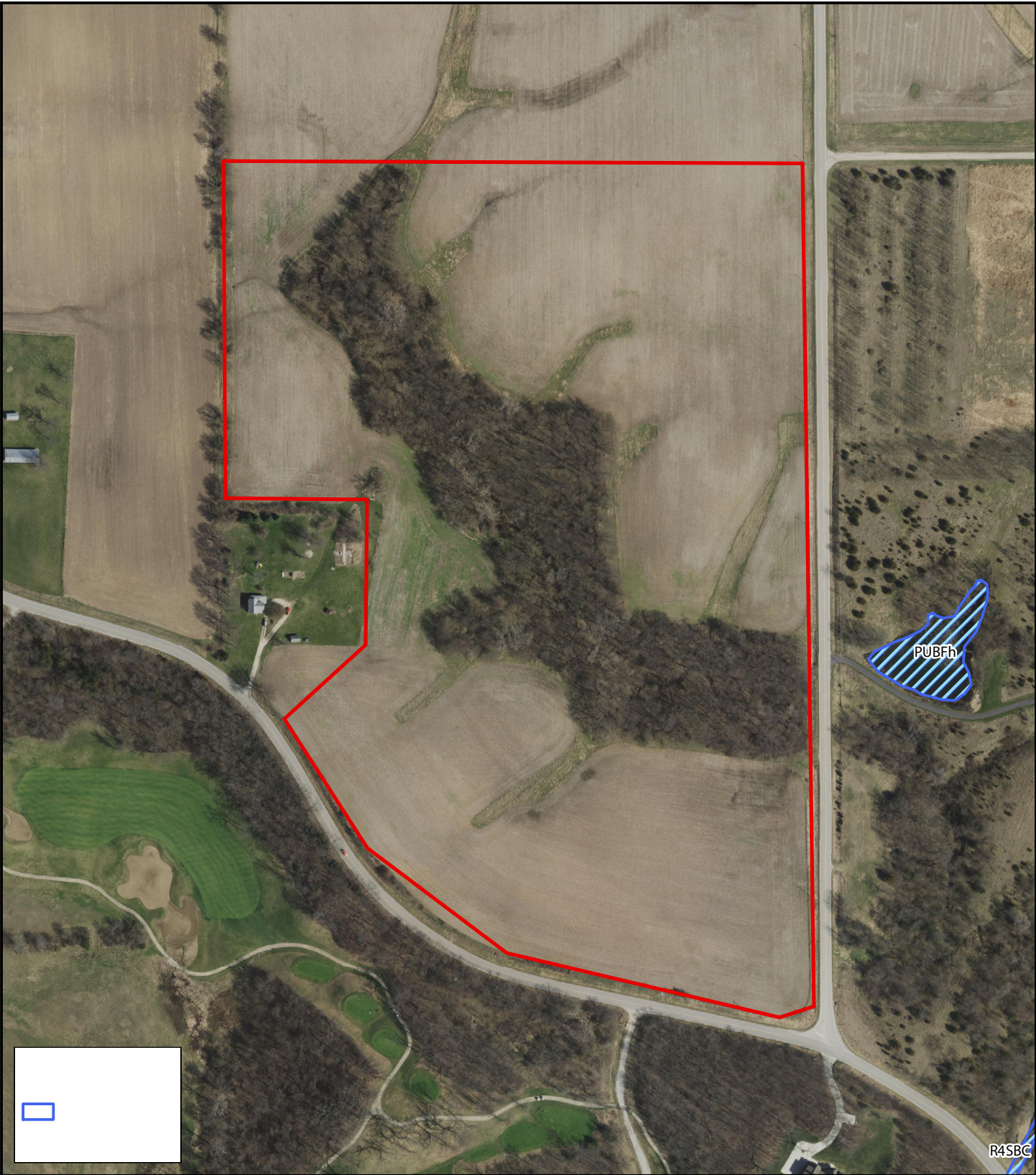


Figure 2: USGS Topographic Map

Berggren Farms Plat 1 | Polk City, IA | Project #4207540

Data Sources: The National Map - USGS





SHIVEHATTERY
ARCHITECTURE+ENGINEERING

Figure 3: National Wetlands Inventory

Berggren Farms Plat 1 | Polk City, IA | Project #4207540

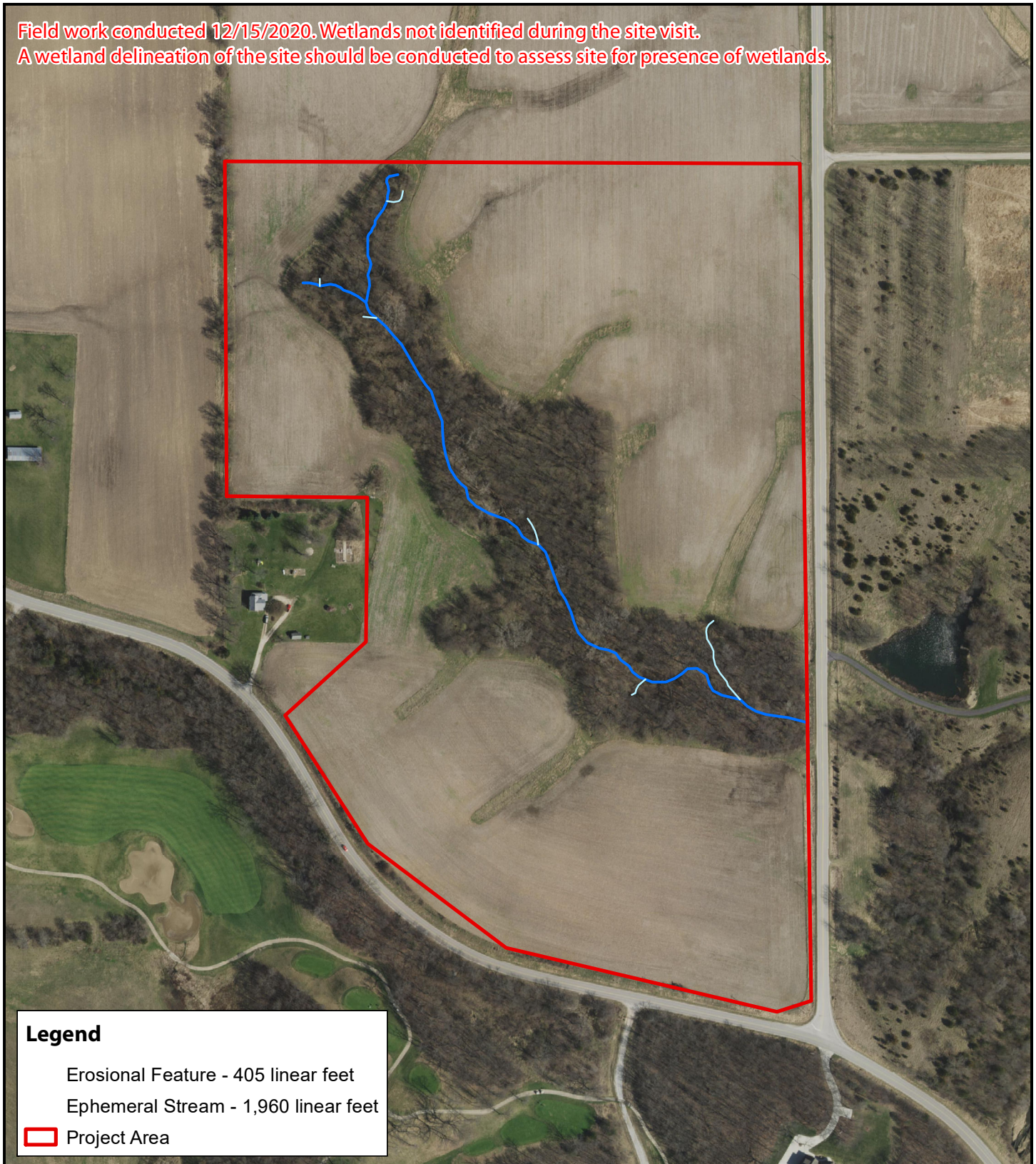
0 150 300
Feet



Data Sources: US Fish & Wildlife Service, ISU Iowa Geographic Map Server



Field work conducted 12/15/2020. Wetlands not identified during the site visit.
A wetland delineation of the site should be conducted to assess site for presence of wetlands.



Legend

Erosional Feature - 405 linear feet

Ephemeral Stream - 1,960 linear feet

 Project Area

SHIVEHATTERY
ARCHITECTURE+ENGINEERING

Figure 4: Stream Determination

Berggren Farms Plat 1 | Polk City, IA | Project #4207540

0 150 300
Feet



Data Sources: Iowa State GIS Server





