



U.S. ARMY CORPS OF ENGINEERS
REGULATORY PROGRAM
APPROVED JURISDICTIONAL DETERMINATION FORM (INTERIM)
NAVIGABLE WATERS PROTECTION RULE

I. ADMINISTRATIVE INFORMATION

Completion Date of Approved Jurisdictional Determination (AJD): 30-APR-2021

ORM Number: MVR-2021-00631-JN

Associated JDs: N/A

Review Area Location¹:

State/Territory: IA City: County/Parish/Borough: Linn County

Center Coordinates of Review Area: Latitude 42.089229 Longitude -91.55898

II. FINDINGS

A. Summary: Check all that apply. At least one box from the following list **MUST** be selected. Complete the corresponding sections/tables and summarize data sources.

- ☒ The review area is comprised entirely of dry land (i.e., there are no waters or water features, including wetlands, of any kind in the entire review area). Rationale: After review of aerial maps and NWI there are no wetlands in the project area. No wetlands or streams will be affected by the new roadway.
- ☐ There are "navigable waters of the United States" within Rivers and Harbors Act jurisdiction within the review area (complete table in section II.B).
- ☐ There are "waters of the United States" within Clean Water Act jurisdiction within the review area (complete appropriate tables in section II.C).
- ☐ There are waters or water features excluded from Clean Water Act jurisdiction within the review area (complete table in section II.D).

B. Rivers and Harbors Act of 1899 Section 10 (§ 10)²

§ 10 Name	§ 10 Size	§ 10 Criteria	Rationale for § 10 Determination
N/A	N/A	N/A	N/A

C. Clean Water Act Section 404

Territorial Seas and Traditional Navigable Waters ((a)(1) waters)³

(a)(1) Name	(a)(1) Size	(a)(1) Criteria	Rationale for (a)(1) Determination
N/A	N/A	N/A	N/A

Tributaries ((a)(2) waters):

(a)(2) Name	(a)(2) Size	(a)(2) Criteria	Rationale for (a)(2) Determination
N/A	N/A	N/A	N/A

Lakes and ponds, and impoundments of jurisdictional waters ((a)(3) waters):

(a)(3) Name	(a)(3) Size	(a)(3) Criteria	Rationale for (a)(3) Determination
N/A	N/A	N/A	N/A

Adjacent wetlands ((a)(4) waters):

¹ Map(s)/Figure(s) are attached to the AJD provided to the requestor.

² If the navigable water is not subject to the ebb and flow of the tide or included on the District's list of Rivers and Harbors Act Section 10 navigable waters list, do NOT use this document to make the determination. The District must continue to follow the procedure outlined in 33 CFR part 329.14 to make a Rivers and Harbors Act Section 10 navigability determination.

³ A stand-alone TNW determination is completed independently of a request for an AJD. A stand-alone TNW determination is conducted for a specific segment of river or stream or other type of waterbody, such as a lake, where independent upstream or downstream limits or lake borders are established. A stand-alone TNW determination should be completed following applicable guidance and should NOT be documented on the AJD form.

⁴ Some excluded waters, such as (b)(2) and (b)(4), may not be specifically identified on the AJD form unless a requestor specifically asks a Corps district to do so. Corps Districts may, in case-by-case instances, choose to identify some or all of these waters within the review area.

⁵ Because of the broad nature of the (b)(1) exclusion and in an effort to collect data on specific types of waters that would be covered by the (b)(1) exclusion, four sub-categories of (b)(1) exclusions were administratively created for the purposes of the AJD Form. These four sub-categories are not new exclusions, but are simply administrative distinctions and remain (b)(1) exclusions as defined by the NWPR.



U.S. ARMY CORPS OF ENGINEERS
REGULATORY PROGRAM
APPROVED JURISDICTIONAL DETERMINATION FORM (INTERIM)
NAVIGABLE WATERS PROTECTION RULE

(a)(4) Name	(a)(4) Size	(a)(4) Criteria	Rationale for (a)(4) Determination
N/A	N/A	N/A	N/A

D. Excluded Waters or Features

Excluded waters ((b)(1) – (b)(12))⁴:

Exclusion Name	Exclusion Size	Exclusion ⁵	Rationale for Exclusion Determination
N/A	N/A	N/A	N/A

III. SUPPORTING INFORMATION

A. Select/enter all resources that were used to aid in this determination and attach data/maps to this document and/or references/citations in the administrative record, as appropriate.

☒ Information submitted by, or on behalf of, the applicant/consultant: *Cedar Rapids Linn County Solid Waste Agency, Linn IA NWP JN.pdf 23 April 2021*

This information is sufficient for purposes of this AJD.

Rationale: *N/A*

☐ Data sheets prepared by the Corps: *Title(s) and/or date(s).*

☒ Photographs: *2021-0631 2017 aerial.pdf, 2021-0631 LiDAR.pdf, 2021-0631 Quad Map.pdf 4/30/2021*

☐ Corps Site visit(s) conducted on: *Date(s).*

☐ Previous Jurisdictional Determinations (AJDs or PJDs): *ORM Number(s) and date(s).*

☐ Antecedent Precipitation Tool: *provide detailed discussion in Section III.B.*

☐ USDA NRCS Soil Survey: *Title(s) and/or date(s).*

☐ USFWS NWI maps: *NWI Map.pdf 4/30/2021*

☐ USGS topographic maps: *Title(s) and/or date(s).*

Other data sources used to aid in this determination:

Data Source (select)	Name and/or date and other relevant information
USGS Sources	N/A.
USDA Sources	N/A.
NOAA Sources	N/A.
USACE Sources	N/A.
State/Local/Tribal Sources	N/A.
Other Sources	N/A.

B. Typical year assessment(s): *N/A*

C. Additional comments to support AJD: After review of aerial maps and NWI there are no wetlands in the project area. No wetlands or streams will be affected by the new roadway.

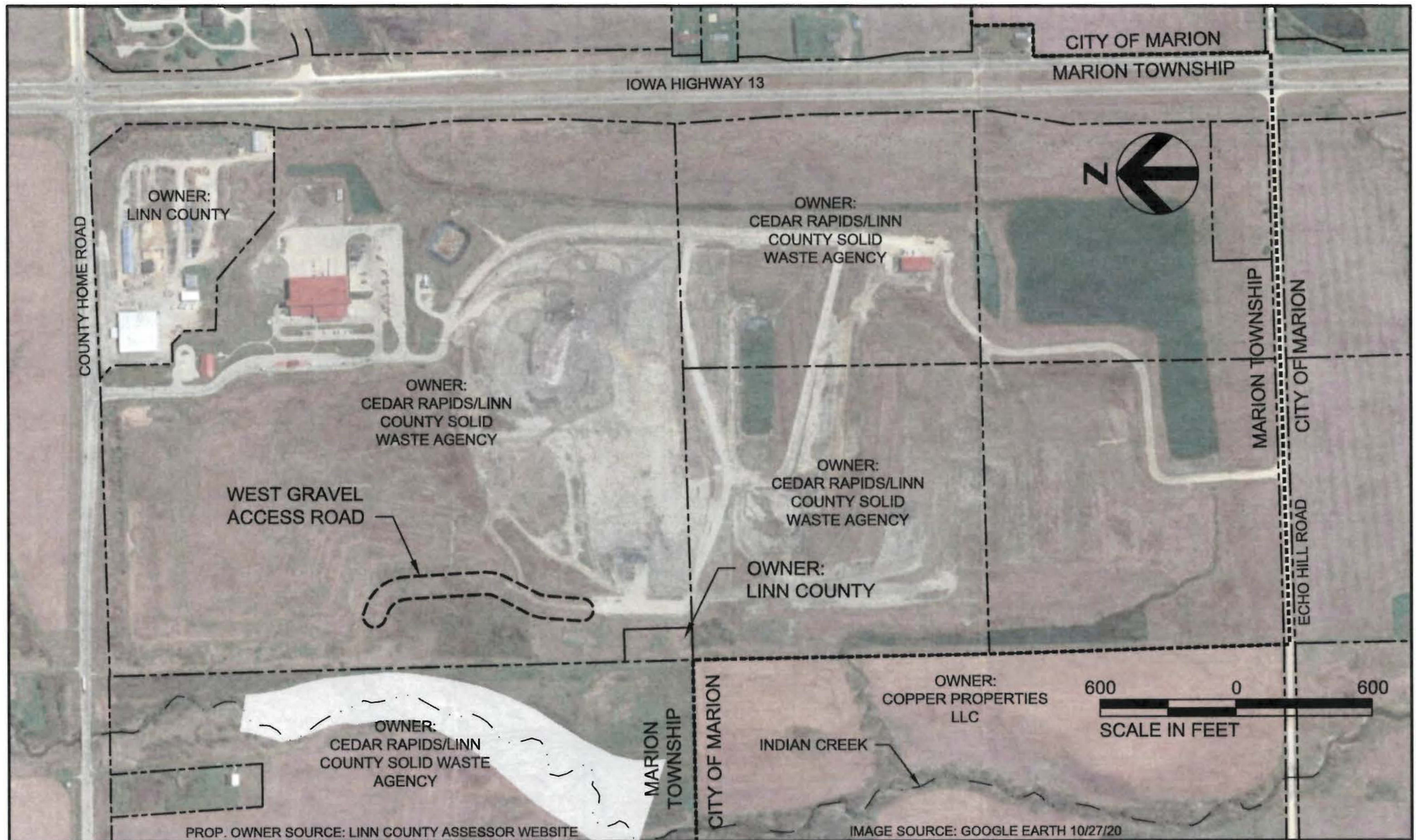
¹ Map(s)/Figure(s) are attached to the AJD provided to the requestor.

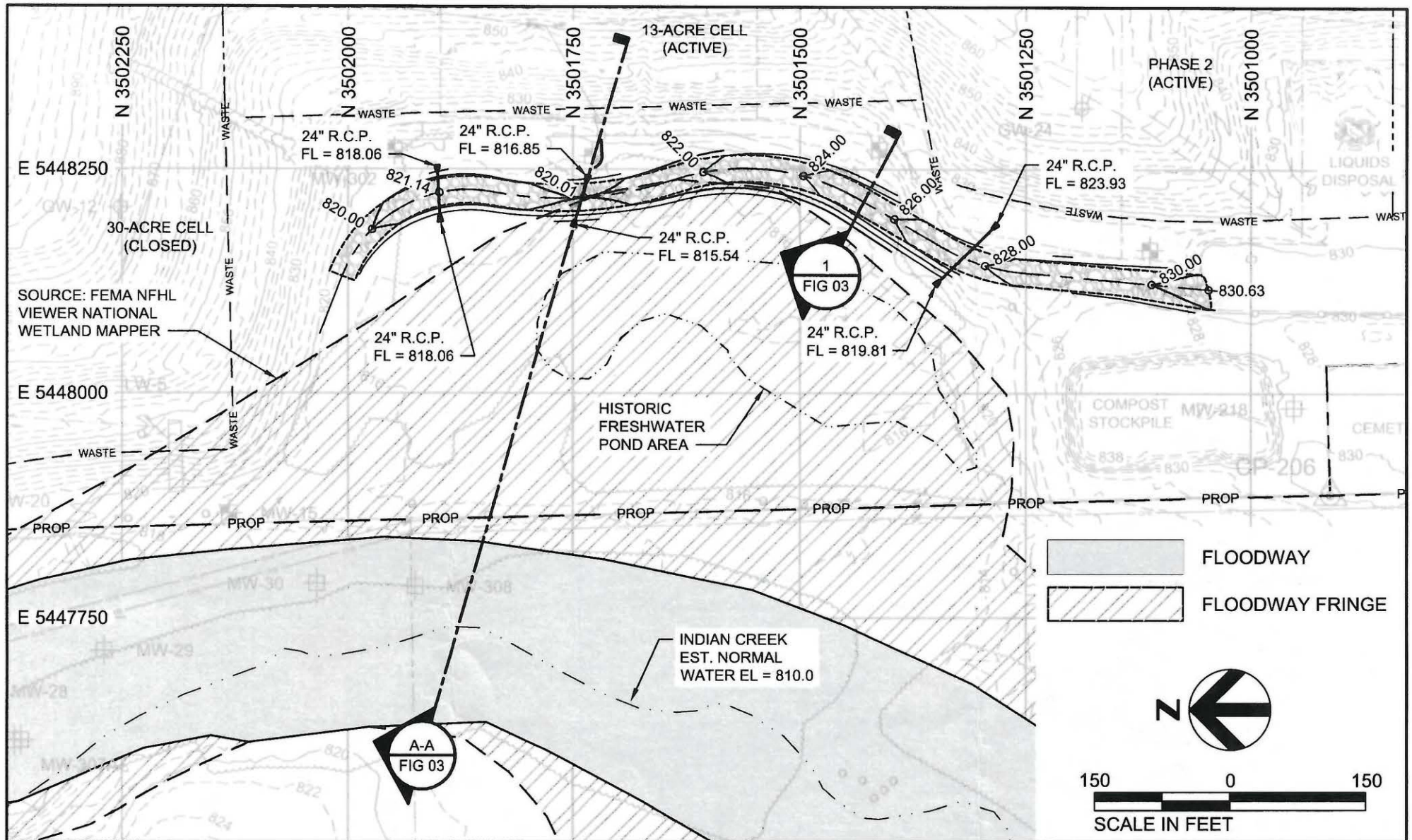
² If the navigable water is not subject to the ebb and flow of the tide or included on the District's list of Rivers and Harbors Act Section 10 navigable waters list, do NOT use this document to make the determination. The District must continue to follow the procedure outlined in 33 CFR part 329.14 to make a Rivers and Harbors Act Section 10 navigability determination.

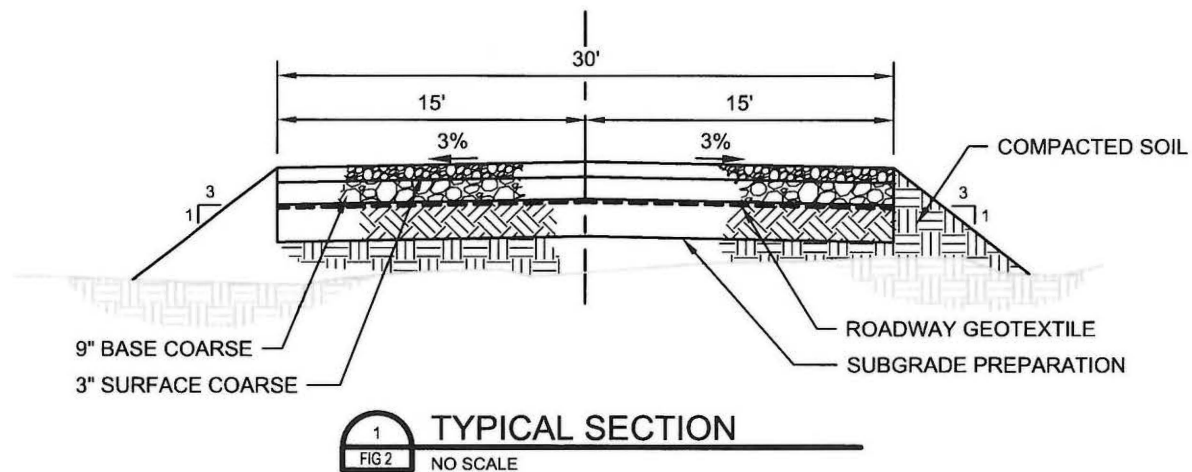
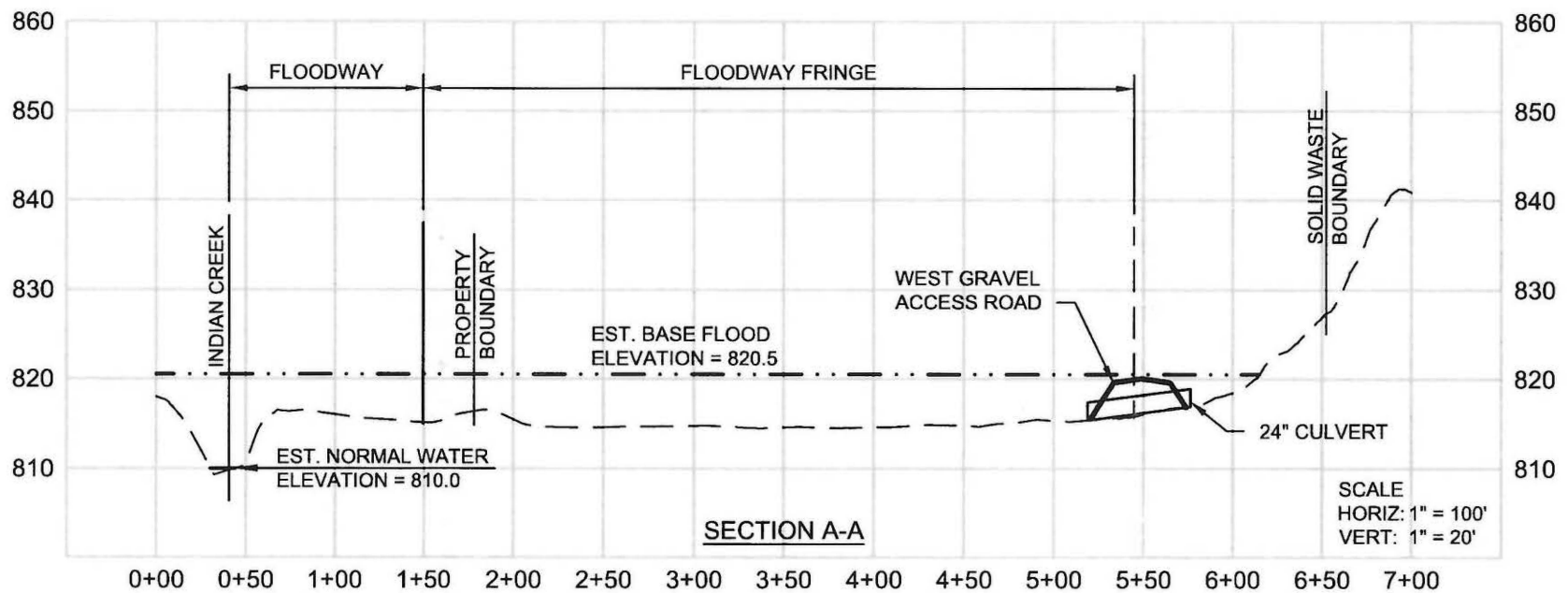
³ A stand-alone TNW determination is completed independently of a request for an AJD. A stand-alone TNW determination is conducted for a specific segment of river or stream or other type of waterbody, such as a lake, where independent upstream or downstream limits or lake borders are established. A stand-alone TNW determination should be completed following applicable guidance and should NOT be documented on the AJD form.

⁴ Some excluded waters, such as (b)(2) and (b)(4), may not be specifically identified on the AJD form unless a requestor specifically asks a Corps district to do so. Corps Districts may, in case-by-case instances, choose to identify some or all of these waters within the review area.

⁵ Because of the broad nature of the (b)(1) exclusion and in an effort to collect data on specific types of waters that would be covered by the (b)(1) exclusion, four sub-categories of (b)(1) exclusions were administratively created for the purposes of the AJD Form. These four sub-categories are not new exclusions, but are simply administrative distinctions and remain (b)(1) exclusions as defined by the NWPR.









- Regulatory Viewer
- Regulatory Map
- Compliance Viewer
- IPaC
- I-Sites
- Mitigation Banking
- IL IAS

Rock Island District Regulatory Viewer



Imagery and Lidar

- ☐ Service)
- ☐ IA ortho 2007 2010 nc (External Web GIS Service)
- ☐ IA naip 2011 cir (External Web GIS Service)
- ☐ IA naip 2011 nc (External Web GIS Service)
- ☐ IA naip 2013 cir (External Web GIS Service)
- ☐ IA naip 2013 nc (External Web GIS Service)
- ☐ IA naip 2014 cir (External Web GIS Service)
- ☐ IA naip 2014 nc (External Web GIS Service)
- ☐ IA naip 2017 cir (External Web GIS Service)
- ☐ IA naip 2017 nc (External Web GIS Service)
- ☒ MVR_NAIP_2017
- ☐ Photo Dates (External Web GIS Service)
- ☐ MVR Quad Maps



- Regulatory Viewer
- Regulatory Map
- Compliance Viewer
- IPaC
- I-Sites
- Mitigation Banking
- IL IAS

Rock Island District Regulatory Viewer



+

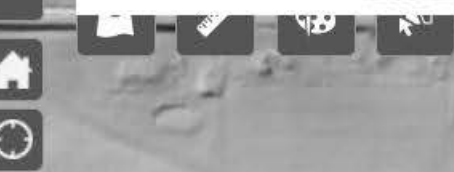
-

42.089229 -91.558598

X

Q

Show search results for 42.089229 -9...



Imagery and Lidar

☐

IA naip 2013 nc (External Web GIS Service) ...

☐

IA naip 2014 cir (External Web GIS Service) ...

☐

IA naip 2014 nc (External Web GIS Service) ...

☐

IA naip 2017 cir (External Web GIS Service) ...

☐

IA naip 2017 nc (External Web GIS Service) ...

☐

MVR_NAIP_2017 ...

☐

Photo Dates (External Web GIS Service) ...

☐

MVR Quad Maps ...

☐

IA LiDAR DEM 1m NAVD88 ft ...

☒

IA LiDAR DEM 1m hillshade ...

☒

IA LiDAR DEM 3m NAVD88 ft ...

☒

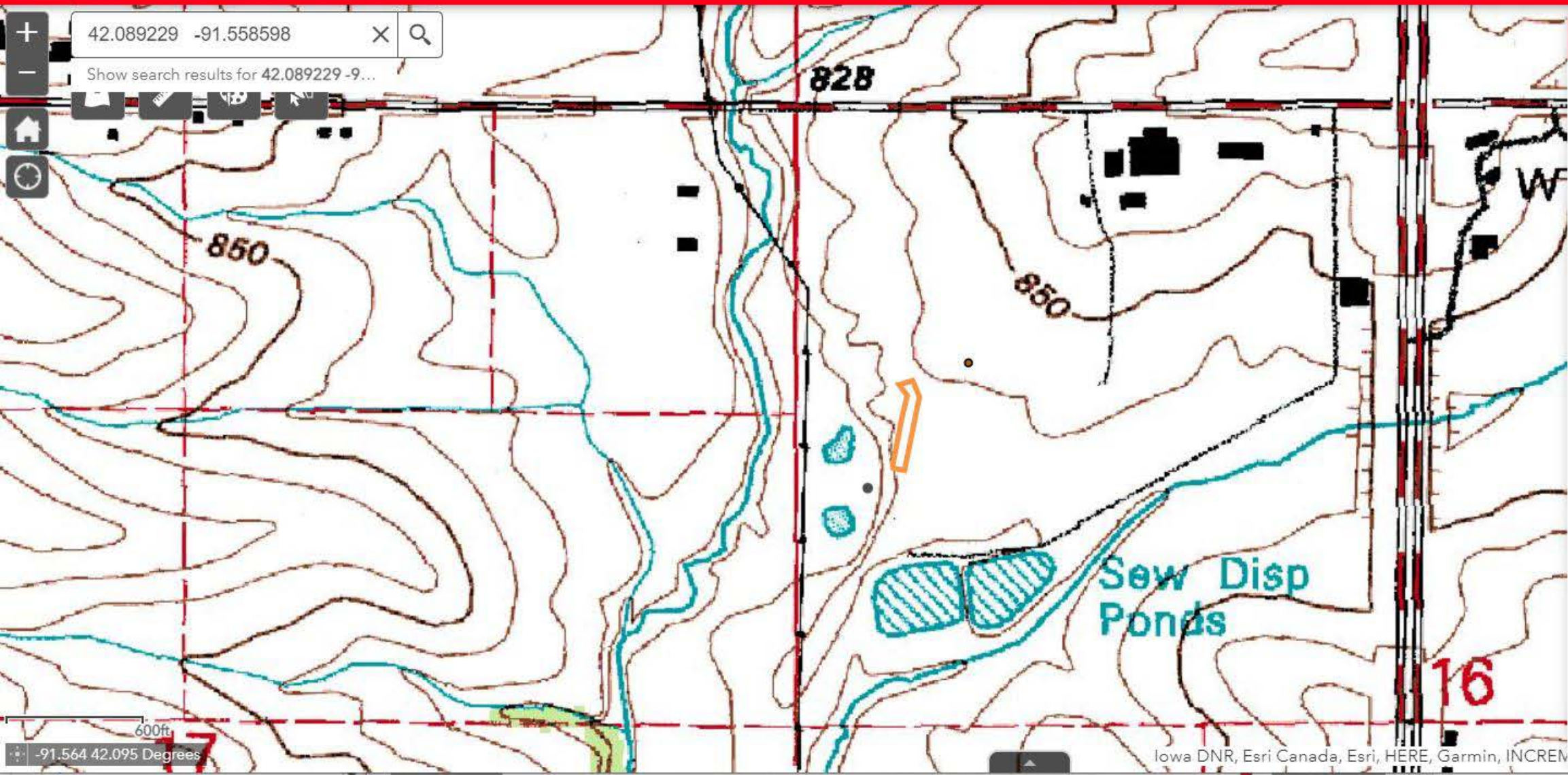
IA LiDAR DEM 3m hillshade ...

☐

IL_LiDAR_DEM_1m_NAVD88_ft ...

- Regulatory Viewer
- Regulatory Map
- Compliance Viewer
- IPaC
- I-Sites
- Mitigation Banking
- IL IAS

Rock Island District Regulatory Viewer



Imagery and Lidar

- ☐ IA naip 2013 nc (External Web GIS Service) ...
- ☐ IA naip 2014 cir (External Web GIS Service) ...
- ☐ IA naip 2014 nc (External Web GIS Service) ...
- ☐ IA naip 2017 cir (External Web GIS Service) ...
- ☐ IA naip 2017 nc (External Web GIS Service) ...
- ☐ MVR_NAIP_2017 ...
- ☐ Photo Dates (External Web GIS Service) ...
- ☒ MVR Quad Maps ...
- ☐ IA LiDAR DEM 1m NAVD88 ft ...
- ☐ IA LiDAR DEM 1m hillshade ...
- ☐ IA LiDAR DEM 3m NAVD88 ft ...
- ☐ IA LiDAR DEM 3m hillshade ...
- ☐ IL_LiDAR_DEM_1m_NAVD88_ft ...

BASEMAPS >

MAP LAYERS >

☒ Wetlands

☒ Riparian

☐ Riparian Mapping Areas

☒ Data Source

☐ Source Type

☐ Image Scale

☐ Image Year

☐ Areas of Interest

☐ FWS Managed Lands

☐ Historic Wetland Data

