



U.S. ARMY CORPS OF ENGINEERS
REGULATORY PROGRAM
APPROVED JURISDICTIONAL DETERMINATION FORM (INTERIM)
NAVIGABLE WATERS PROTECTION RULE

I. ADMINISTRATIVE INFORMATION

Completion Date of Approved Jurisdictional Determination (AJD): 06-JUL-2021

ORM Number: MVR-2021-00694-AF

Associated JDs:

Review Area Location¹:

State/Territory: IA City: Balflo County: Mills County

Center Coordinates of Review Area: Latitude 41.0438 Longitude -95.689738

II. FINDINGS

A. Summary: Check all that apply. At least one box from the following list **MUST** be selected. Complete the corresponding sections/tables and summarize data sources.

- ☐ The review area is comprised entirely of dry land (i.e., there are no waters or water features, including wetlands, of any kind in the entire review area). Rationale: N/A or describe rationale.
- ☐ There are "navigable waters of the United States" within Rivers and Harbors Act jurisdiction within the review area (complete table in section II.B).
- ☒ There are "waters of the United States" within Clean Water Act jurisdiction within the review area (complete appropriate tables in section II.C).
- ☒ There are waters or water features excluded from Clean Water Act jurisdiction within the review area (complete table in section II.D).

B. Rivers and Harbors Act of 1899 Section 10 (§ 10)²

§ 10 Name	§ 10 Size	§ 10 Criteria	Rationale for § 10 Determination
N/A	N/A	N/A	N/A

C. Clean Water Act Section 404

Territorial Seas and Traditional Navigable Waters ((a)(1) waters)³

(a)(1) Name	(a)(1) Size	(a)(1) Criteria	Rationale for (a)(1) Determination
N/A	N/A	N/A	N/A

Tributaries ((a)(2) waters):

(a)(2) Name	(a)(2) Size	(a)(2) Criteria	Rationale for (a)(2) Determination
IS-1	1030 feet	(a)(2) Intermittent tributary contributes surface water flow directly or indirectly to an (a)(1) water in a typical year	This feature meets the criteria for an intermittent tributary. The tributary flows to Keg Creek, an A2 water that flows to the Missouri River (A1)
IS-2	985 feet	(a)(2) Intermittent tributary contributes surface water flow directly or indirectly to an (a)(1) water in a typical year	This feature meets the criteria for an intermittent tributary. The tributary flows to Keg Creek, an A2 water that flows to the Missouri River (A1)
IS-3	1017 feet	(a)(2) Intermittent tributary contributes surface water flow directly or indirectly to an (a)(1) water in a typical year	This feature meets the criteria for an intermittent tributary. The tributary flows to Keg Creek, an A2 water that flows to the Missouri River (A1)

¹ Map(s)/Figure(s) are attached to the AJD provided to the requestor.

² If the navigable water is not subject to the ebb and flow of the tide or included on the District's list of Rivers and Harbors Act Section 10 navigable waters list, do NOT use this document to make the determination. The District must continue to follow the procedure outlined in 33 CFR part 329.14 to make a Rivers and Harbors Act Section 10 navigability determination.

³ A stand-alone TNW determination is completed independently of a request for an AJD. A stand-alone TNW determination is conducted for a specific segment of river or stream or other type of waterbody, such as a lake, where independent upstream or downstream limits or lake borders are established. A stand-alone TNW determination should be completed following applicable guidance and should NOT be documented on the AJD form.

⁴ Some excluded waters, such as (b)(2) and (b)(4), may not be specifically identified on the AJD form unless a requestor specifically asks a Corps district to do so. Corps Districts may, in case-by-case instances, choose to identify some or all of these waters within the review area.

⁵ Because of the broad nature of the (b)(1) exclusion and in an effort to collect data on specific types of waters that would be covered by the (b)(1) exclusion, four sub-categories of (b)(1) exclusions were administratively created for the purposes of the AJD Form. These four sub-categories are not new exclusions, but are simply administrative distinctions and remain (b)(1) exclusions as defined by the NWPR.



**U.S. ARMY CORPS OF ENGINEERS
REGULATORY PROGRAM
APPROVED JURISDICTIONAL DETERMINATION FORM (INTERIM)
NAVIGABLE WATERS PROTECTION RULE**

IS-4	1109 feet	(a)(2) Intermittent tributary contributes surface water flow directly or indirectly to an (a)(1) water in a typical year	This feature meets the criteria for an intermittent tributary. The tributary flows to Keg Creek, an A2 water that flows to the Missouri River (A1)
IS-5	2943 feet	(a)(2) Intermittent tributary contributes surface water flow directly or indirectly to an (a)(1) water in a typical year	This feature meets the criteria for an intermittent tributary. The tributary flows to Keg Creek, an A2 water that flows to the Missouri River (A1)
IS-6	2097 feet	(a)(2) Intermittent tributary contributes surface water flow directly or indirectly to an (a)(1) water in a typical year	This feature meets the criteria for an intermittent tributary. The tributary flows to Keg Creek, an A2 water that flows to the Missouri River (A1)
IS-7	4139 feet	(a)(2) Intermittent tributary contributes surface water flow directly or indirectly to an (a)(1) water in a typical year	This feature meets the criteria for an intermittent tributary. The tributary flows to Keg Creek, an A2 water that flows to the Missouri River (A1)
PS-1	2426 feet	(a)(2) Perennial tributary contributes surface water flow directly or indirectly to an (a)(1) water in a typical year	This feature meets the criteria for an perennial tributary. The tributary flows to Keg Creek, an A2 water that flows to the Missouri River (A1)

Lakes and ponds, and impoundments of jurisdictional waters ((a)(3) waters):

(a)(3) Name	(a)(3) Size	(a)(3) Criteria	Rationale for (a)(3) Determination
N/A	N/A	N/A	N/A

Adjacent wetlands ((a)(4) waters):

(a)(4) Name	(a)(4) Size	(a)(4) Criteria	Rationale for (a)(4) Determination
WL-2	0.34 acres	(a)(4) Wetland separated from an (a)(1)-(a)(3) water only by an artificial structure allowing a direct hydrologic surface connection between the wetland and the (a)(1)-(a)(3) water in a typical year	Wetland 2 is inundated by PS-1 in a typical year via a culvert that is underneath Ivory Road. PS-1 is a perennial stream that flows to the Missouri River.
WL-3, Emergent	14.87 acres	(a)(4) Wetland abuts an (a)(1)-(a)(3) water	Wetland 3 abuts PS-1.
WL-3, Forested	0.4 acres	(a)(4) Wetland abuts an (a)(1)-(a)(3) water	Wetland 3 abuts PS-1
WL-3, Scrub/Shrub	0.23 acres	(a)(4) Wetland abuts an (a)(1)-(a)(3) water	Wetland 3 abuts PS-1
WL-5, Emergent	1.62 acres	(a)(4) Wetland separated from an (a)(1)-(a)(3) water only by an artificial structure allowing a direct hydrologic surface connection between the wetland and the (a)(1)-(a)(3) water in a typical year	Wetland 5 is separated from wetland 3 by a culvert. A direct connection exists during a typical year. Wetland 3 abuts PS-1, a perennial tributary of the Missouri River.
WL-5, Forested	0.41 acres	(a)(4) Wetland separated from an (a)(1)-(a)(3) water only by an artificial structure allowing a direct hydrologic surface connection between the wetland and the (a)(1)-(a)(3) water in a typical year	Wetland 5 is separated from wetland 3 by a culvert. A direct connection exists during a typical year. Wetland 3 abuts PS-1, a perennial tributary of the Missouri River.

¹ Map(s)/Figure(s) are attached to the AJD provided to the requestor.

² If the navigable water is not subject to the ebb and flow of the tide or included on the District's list of Rivers and Harbors Act Section 10 navigable waters list, do NOT use this document to make the determination. The District must continue to follow the procedure outlined in 33 CFR part 329.14 to make a Rivers and Harbors Act Section 10 navigability determination.

³ A stand-alone TNW determination is completed independently of a request for an AJD. A stand-alone TNW determination is conducted for a specific segment of river or stream or other type of waterbody, such as a lake, where independent upstream or downstream limits or lake borders are established. A stand-alone TNW determination should be completed following applicable guidance and should NOT be documented on the AJD form.

⁴ Some excluded waters, such as (b)(2) and (b)(4), may not be specifically identified on the AJD form unless a requestor specifically asks a Corps district to do so. Corps Districts may, in case-by-case instances, choose to identify some or all of these waters within the review area.

⁵ Because of the broad nature of the (b)(1) exclusion and in an effort to collect data on specific types of waters that would be covered by the (b)(1) exclusion, four sub-categories of (b)(1) exclusions were administratively created for the purposes of the AJD Form. These four sub-categories are not new exclusions, but are simply administrative distinctions and remain (b)(1) exclusions as defined by the NWPR.



**U.S. ARMY CORPS OF ENGINEERS
REGULATORY PROGRAM
APPROVED JURISDICTIONAL DETERMINATION FORM (INTERIM)
NAVIGABLE WATERS PROTECTION RULE**

		(a)(3) water in a typical year	
WL-5, Scrub/Shrub	0.07 acres	(a)(4) Wetland separated from an (a)(1)-(a)(3) water only by an artificial structure allowing a direct hydrologic surface connection between the wetland and the (a)(1)-(a)(3) water in a typical year	Wetland 5 is separated from wetland 3 by a culvert. A direct connection exists during a typical year. Wetland 3 abuts PS-1, a perennial tributary of the Missouri River.
WL-6, Emergent	1.24 acres	(a)(4) Wetland abuts an (a)(1)-(a)(3) water	Wetland abuts an A2 tributary.
WL-6, Forested	4.46 acres	(a)(4) Wetland abuts an (a)(1)-(a)(3) water	Wetland abuts an A2 tributary.
WL-6, Scrub/Shrub	0.39 acres	(a)(4) Wetland abuts an (a)(1)-(a)(3) water	Wetland abuts an A2 tributary.
WL-8	0.28 acres	(a)(4) Wetland abuts an (a)(1)-(a)(3) water	Wetland abuts an A2 tributary.
WL-9, Emergent	1.58 acres	(a)(4) Wetland abuts an (a)(1)-(a)(3) water	Wetland abuts an A2 tributary.
WL-9, Forested	1.07 acres	(a)(4) Wetland abuts an (a)(1)-(a)(3) water	Wetland abuts an A2 tributary.
WL-9, Scrub/Shrub	0.1 acres	(a)(4) Wetland abuts an (a)(1)-(a)(3) water	Wetland abuts an A2 tributary.

D. Excluded Waters or Features

Excluded waters ((b)(1) – (b)(12))⁴:

Exclusion Name	Exclusion Size	Exclusion ⁵	Rationale for Exclusion Determination
EF-1	84 feet	(b)(3) Ephemeral feature, including an ephemeral stream, swale, gully, rill, or pool	Does not meet the criteria of an intermittent or perennial stream in a typical year.
EF-10	77 feet	(b)(3) Ephemeral feature, including an ephemeral stream, swale, gully, rill, or pool	Does not meet the criteria of an intermittent or perennial stream in a typical year.
EF-11	122 feet	(b)(3) Ephemeral feature, including an ephemeral stream, swale, gully, rill, or pool	Does not meet the criteria of an intermittent or perennial stream in a typical year.
EF-12	91 feet	(b)(3) Ephemeral feature, including an ephemeral stream, swale, gully, rill, or pool	Does not meet the criteria of an intermittent or perennial stream in a typical year.
EF-13	210 feet	(b)(3) Ephemeral feature, including an ephemeral stream, swale, gully, rill, or pool	Does not meet the criteria of an intermittent or perennial stream in a typical year.
EF-14	101 feet	(b)(3) Ephemeral feature, including an ephemeral stream, swale, gully, rill, or pool	Does not meet the criteria of an intermittent or perennial stream in a typical year.
EF-15	101 feet	(b)(3) Ephemeral feature, including an ephemeral stream, swale, gully, rill, or pool	Does not meet the criteria of an intermittent or perennial stream in a typical year.
EF-16	88 feet	(b)(3) Ephemeral feature, including an ephemeral stream, swale, gully, rill, or pool	Does not meet the criteria of an intermittent or perennial stream in a typical year.
EF-17	117 feet	(b)(3) Ephemeral feature, including	Does not meet the criteria of an intermittent or

¹ Map(s)/Figure(s) are attached to the AJD provided to the requestor.

² If the navigable water is not subject to the ebb and flow of the tide or included on the District's list of Rivers and Harbors Act Section 10 navigable waters list, do NOT use this document to make the determination. The District must continue to follow the procedure outlined in 33 CFR part 329.14 to make a Rivers and Harbors Act Section 10 navigability determination.

³ A stand-alone TNW determination is completed independently of a request for an AJD. A stand-alone TNW determination is conducted for a specific segment of river or stream or other type of waterbody, such as a lake, where independent upstream or downstream limits or lake borders are established. A stand-alone TNW determination should be completed following applicable guidance and should NOT be documented on the AJD form.

⁴ Some excluded waters, such as (b)(2) and (b)(4), may not be specifically identified on the AJD form unless a requestor specifically asks a Corps district to do so. Corps Districts may, in case-by-case instances, choose to identify some or all of these waters within the review area.

⁵ Because of the broad nature of the (b)(1) exclusion and in an effort to collect data on specific types of waters that would be covered by the (b)(1) exclusion, four sub-categories of (b)(1) exclusions were administratively created for the purposes of the AJD Form. These four sub-categories are not new exclusions, but are simply administrative distinctions and remain (b)(1) exclusions as defined by the NWPR.



**U.S. ARMY CORPS OF ENGINEERS
REGULATORY PROGRAM
APPROVED JURISDICTIONAL DETERMINATION FORM (INTERIM)
NAVIGABLE WATERS PROTECTION RULE**

		an ephemeral stream, swale, gully, rill, or pool	perennial stream in a typical year.
EF-18	169 feet	(b)(3) Ephemeral feature, including an ephemeral stream, swale, gully, rill, or pool	Does not meet the criteria of an intermittent or perennial stream in a typical year.
EF-19	723 feet	(b)(3) Ephemeral feature, including an ephemeral stream, swale, gully, rill, or pool	Does not meet the criteria of an intermittent or perennial stream in a typical year.
EF-2	195 feet	(b)(3) Ephemeral feature, including an ephemeral stream, swale, gully, rill, or pool	Does not meet the criteria of an intermittent or perennial stream in a typical year.
EF-20	83 feet	(b)(3) Ephemeral feature, including an ephemeral stream, swale, gully, rill, or pool	Does not meet the criteria of an intermittent or perennial stream in a typical year.
EF-21	95 feet	(b)(3) Ephemeral feature, including an ephemeral stream, swale, gully, rill, or pool	Does not meet the criteria of an intermittent or perennial stream in a typical year.
EF-22	105 feet	(b)(3) Ephemeral feature, including an ephemeral stream, swale, gully, rill, or pool	Does not meet the criteria of an intermittent or perennial stream in a typical year.
EF-23	365 feet	(b)(3) Ephemeral feature, including an ephemeral stream, swale, gully, rill, or pool	Does not meet the criteria of an intermittent or perennial stream in a typical year.
EF-24	149 feet	(b)(3) Ephemeral feature, including an ephemeral stream, swale, gully, rill, or pool	Does not meet the criteria of an intermittent or perennial stream in a typical year.
EF-25	141 feet	(b)(3) Ephemeral feature, including an ephemeral stream, swale, gully, rill, or pool	Does not meet the criteria of an intermittent or perennial stream in a typical year.
EF-26	447 feet	(b)(3) Ephemeral feature, including an ephemeral stream, swale, gully, rill, or pool	Does not meet the criteria of an intermittent or perennial stream in a typical year.
EF-27	168 feet	(b)(3) Ephemeral feature, including an ephemeral stream, swale, gully, rill, or pool	Does not meet the criteria of an intermittent or perennial stream in a typical year.
EF-28	75 feet	(b)(3) Ephemeral feature, including an ephemeral stream, swale, gully, rill, or pool	Does not meet the criteria of an intermittent or perennial stream in a typical year.
EF-29	116 feet	(b)(3) Ephemeral feature, including an ephemeral stream, swale, gully, rill, or pool	Does not meet the criteria of an intermittent or perennial stream in a typical year.
EF-3	231 feet	(b)(3) Ephemeral feature, including an ephemeral stream, swale, gully, rill, or pool	Does not meet the criteria of an intermittent or perennial stream in a typical year.
EF-30	71 feet	(b)(3) Ephemeral feature, including an ephemeral stream, swale, gully, rill, or pool	Does not meet the criteria of an intermittent or perennial stream in a typical year.
EF-31	271 feet	(b)(3) Ephemeral feature, including an ephemeral stream, swale, gully, rill, or pool	Does not meet the criteria of an intermittent or perennial stream in a typical year.
EF-32	150 feet	(b)(3) Ephemeral feature, including an ephemeral stream, swale, gully, rill, or pool	Does not meet the criteria of an intermittent or perennial stream in a typical year.

¹ Map(s)/Figure(s) are attached to the AJD provided to the requestor.

² If the navigable water is not subject to the ebb and flow of the tide or included on the District's list of Rivers and Harbors Act Section 10 navigable waters list, do NOT use this document to make the determination. The District must continue to follow the procedure outlined in 33 CFR part 329.14 to make a Rivers and Harbors Act Section 10 navigability determination.

³ A stand-alone TNW determination is completed independently of a request for an AJD. A stand-alone TNW determination is conducted for a specific segment of river or stream or other type of waterbody, such as a lake, where independent upstream or downstream limits or lake borders are established. A stand-alone TNW determination should be completed following applicable guidance and should NOT be documented on the AJD form.

⁴ Some excluded waters, such as (b)(2) and (b)(4), may not be specifically identified on the AJD form unless a requestor specifically asks a Corps district to do so. Corps Districts may, in case-by-case instances, choose to identify some or all of these waters within the review area.

⁵ Because of the broad nature of the (b)(1) exclusion and in an effort to collect data on specific types of waters that would be covered by the (b)(1) exclusion, four sub-categories of (b)(1) exclusions were administratively created for the purposes of the AJD Form. These four sub-categories are not new exclusions, but are simply administrative distinctions and remain (b)(1) exclusions as defined by the NWPR.



**U.S. ARMY CORPS OF ENGINEERS
REGULATORY PROGRAM
APPROVED JURISDICTIONAL DETERMINATION FORM (INTERIM)
NAVIGABLE WATERS PROTECTION RULE**

		rill, or pool	
EF-33	218 feet	(b)(3) Ephemeral feature, including an ephemeral stream, swale, gully, rill, or pool	Does not meet the criteria of an intermittent or perennial stream in a typical year.
EF-34	92 feet	(b)(3) Ephemeral feature, including an ephemeral stream, swale, gully, rill, or pool	Does not meet the criteria of an intermittent or perennial stream in a typical year.
EF-35	266 feet	(b)(3) Ephemeral feature, including an ephemeral stream, swale, gully, rill, or pool	Does not meet the criteria of an intermittent or perennial stream in a typical year.
EF-36	756 feet	(b)(3) Ephemeral feature, including an ephemeral stream, swale, gully, rill, or pool	Does not meet the criteria of an intermittent or perennial stream in a typical year.
EF-37	335 feet	(b)(3) Ephemeral feature, including an ephemeral stream, swale, gully, rill, or pool	Does not meet the criteria of an intermittent or perennial stream in a typical year.
EF-4	266 feet	(b)(3) Ephemeral feature, including an ephemeral stream, swale, gully, rill, or pool	Does not meet the criteria of an intermittent or perennial stream in a typical year.
EF-5	78 feet	(b)(3) Ephemeral feature, including an ephemeral stream, swale, gully, rill, or pool	Does not meet the criteria of an intermittent or perennial stream in a typical year.
EF-6	111 feet	(b)(3) Ephemeral feature, including an ephemeral stream, swale, gully, rill, or pool	Does not meet the criteria of an intermittent or perennial stream in a typical year.
EF-7	139 feet	(b)(3) Ephemeral feature, including an ephemeral stream, swale, gully, rill, or pool	Does not meet the criteria of an intermittent or perennial stream in a typical year.
EF-8	355 feet	(b)(3) Ephemeral feature, including an ephemeral stream, swale, gully, rill, or pool	Does not meet the criteria of an intermittent or perennial stream in a typical year.
EF-9	74 feet	(b)(3) Ephemeral feature, including an ephemeral stream, swale, gully, rill, or pool	Does not meet the criteria of an intermittent or perennial stream in a typical year.
ES-1	870 feet	(b)(3) Ephemeral feature, including an ephemeral stream, swale, gully, rill, or pool	Does not meet the criteria of an intermittent or perennial stream in a typical year.
ES-10	193 feet	(b)(3) Ephemeral feature, including an ephemeral stream, swale, gully, rill, or pool	Does not meet the criteria of an intermittent or perennial stream in a typical year.
ES-11	112 feet	(b)(3) Ephemeral feature, including an ephemeral stream, swale, gully, rill, or pool	Does not meet the criteria of an intermittent or perennial stream in a typical year.
ES-12	552 feet	(b)(3) Ephemeral feature, including an ephemeral stream, swale, gully, rill, or pool	Does not meet the criteria of an intermittent or perennial stream in a typical year.
ES-2	1088 feet	(b)(3) Ephemeral feature, including an ephemeral stream, swale, gully, rill, or pool	Does not meet the criteria of an intermittent or perennial stream in a typical year.
ES-3	346 feet	(b)(3) Ephemeral feature, including an ephemeral stream, swale, gully, rill, or pool	Does not meet the criteria of an intermittent or perennial stream in a typical year.

¹ Map(s)/Figure(s) are attached to the AJD provided to the requestor.

² If the navigable water is not subject to the ebb and flow of the tide or included on the District's list of Rivers and Harbors Act Section 10 navigable waters list, do NOT use this document to make the determination. The District must continue to follow the procedure outlined in 33 CFR part 329.14 to make a Rivers and Harbors Act Section 10 navigability determination.

³ A stand-alone TNW determination is completed independently of a request for an AJD. A stand-alone TNW determination is conducted for a specific segment of river or stream or other type of waterbody, such as a lake, where independent upstream or downstream limits or lake borders are established. A stand-alone TNW determination should be completed following applicable guidance and should NOT be documented on the AJD form.

⁴ Some excluded waters, such as (b)(2) and (b)(4), may not be specifically identified on the AJD form unless a requestor specifically asks a Corps district to do so. Corps Districts may, in case-by-case instances, choose to identify some or all of these waters within the review area.

⁵ Because of the broad nature of the (b)(1) exclusion and in an effort to collect data on specific types of waters that would be covered by the (b)(1) exclusion, four sub-categories of (b)(1) exclusions were administratively created for the purposes of the AJD Form. These four sub-categories are not new exclusions, but are simply administrative distinctions and remain (b)(1) exclusions as defined by the NWPR.



U.S. ARMY CORPS OF ENGINEERS
REGULATORY PROGRAM
APPROVED JURISDICTIONAL DETERMINATION FORM (INTERIM)
NAVIGABLE WATERS PROTECTION RULE

ES-4	180 feet	(b)(3) Ephemeral feature, including an ephemeral stream, swale, gully, rill, or pool	Does not meet the criteria of an intermittent or perennial stream in a typical year.
ES-5	1219 feet	(b)(3) Ephemeral feature, including an ephemeral stream, swale, gully, rill, or pool	Does not meet the criteria of an intermittent or perennial stream in a typical year.
ES-6	251 feet	(b)(3) Ephemeral feature, including an ephemeral stream, swale, gully, rill, or pool	Does not meet the criteria of an intermittent or perennial stream in a typical year.
ES-7	158 feet	(b)(3) Ephemeral feature, including an ephemeral stream, swale, gully, rill, or pool	Does not meet the criteria of an intermittent or perennial stream in a typical year.
ES-8	1236 feet	(b)(3) Ephemeral feature, including an ephemeral stream, swale, gully, rill, or pool	Does not meet the criteria of an intermittent or perennial stream in a typical year.
ES-9	559 feet	(b)(3) Ephemeral feature, including an ephemeral stream, swale, gully, rill, or pool	Does not meet the criteria of an intermittent or perennial stream in a typical year.
WL-1	0.26 acres	(b)(1) Non-adjacent wetland	Wetland is isolated with no direct surface connection to an A2 tributary.
WL-4	0.13 acres	(b)(1) Non-adjacent wetland	Wetland is isolated with no direct surface connection to an A2 tributary.
WL-7	0.09 acres	(b)(1) Non-adjacent wetland	Wetland is isolated with no direct surface connection to an A2 tributary.

III. SUPPORTING INFORMATION

A. Select/enter all resources that were used to aid in this determination and attach data/maps to this document and/or references/citations in the administrative record, as appropriate.

X Information submitted by, or on behalf of, the applicant/consultant: *Wetland Delineation Report, Mid American's Green Advantage Enterprise Park, April 12-16, 2021.*

This information is sufficient for purposes of this AJD.

Rationale: *N/A or describe rationale for insufficiency (including partial insufficiency).*

___ Data sheets prepared by the Corps: *Title(s) and/or date(s).*

___ Photographs: *(NA, aerial, other, aerial and other) Title(s) and/or date(s).*

___ Corps Site visit(s) conducted on: *Date(s).*

___ Previous Jurisdictional Determinations (AJDs or PJDs): *ORM Number(s) and date(s).*

___ Antecedent Precipitation Tool: *provide detailed discussion in Section III.B.*

X USDA NRCS Soil Survey: *Figure 6 in Wetland Delineation*

X USFWS NWI maps: *Figure 5 in Wetland Delineation*

X USGS topographic maps: *Accessed via Google Earth and also Figure 2 Wetland Delineation.*

Other data sources used to aid in this determination:

Data Source (select)	Name and/or date and other relevant information
USGS Sources	N/A.
USDA Sources	N/A.

¹ Map(s)/Figure(s) are attached to the AJD provided to the requestor.

² If the navigable water is not subject to the ebb and flow of the tide or included on the District's list of Rivers and Harbors Act Section 10 navigable waters list, do NOT use this document to make the determination. The District must continue to follow the procedure outlined in 33 CFR part 329.14 to make a Rivers and Harbors Act Section 10 navigability determination.

³ A stand-alone TNW determination is completed independently of a request for an AJD. A stand-alone TNW determination is conducted for a specific segment of river or stream or other type of waterbody, such as a lake, where independent upstream or downstream limits or lake borders are established. A stand-alone TNW determination should be completed following applicable guidance and should NOT be documented on the AJD form.

⁴ Some excluded waters, such as (b)(2) and (b)(4), may not be specifically identified on the AJD form unless a requestor specifically asks a Corps district to do so. Corps Districts may, in case-by-case instances, choose to identify some or all of these waters within the review area.

⁵ Because of the broad nature of the (b)(1) exclusion and in an effort to collect data on specific types of waters that would be covered by the (b)(1) exclusion, four sub-categories of (b)(1) exclusions were administratively created for the purposes of the AJD Form. These four sub-categories are not new exclusions, but are simply administrative distinctions and remain (b)(1) exclusions as defined by the NWPR.



U.S. ARMY CORPS OF ENGINEERS
REGULATORY PROGRAM
APPROVED JURISDICTIONAL DETERMINATION FORM (INTERIM)
NAVIGABLE WATERS PROTECTION RULE

NOAA Sources	N/A.
USACE Sources	N/A.
State/Local/Tribal Sources	N/A.
Other Sources	N/A.

- B. Typical year assessment(s):** N/A or provide typical year assessment for each relevant data source used to support the conclusions in the AJD.
- C. Additional comments to support AJD:** Figure 7 and Figure 7a (21 pages) were used to determine jurisdiction. Pages are attached to AJD.

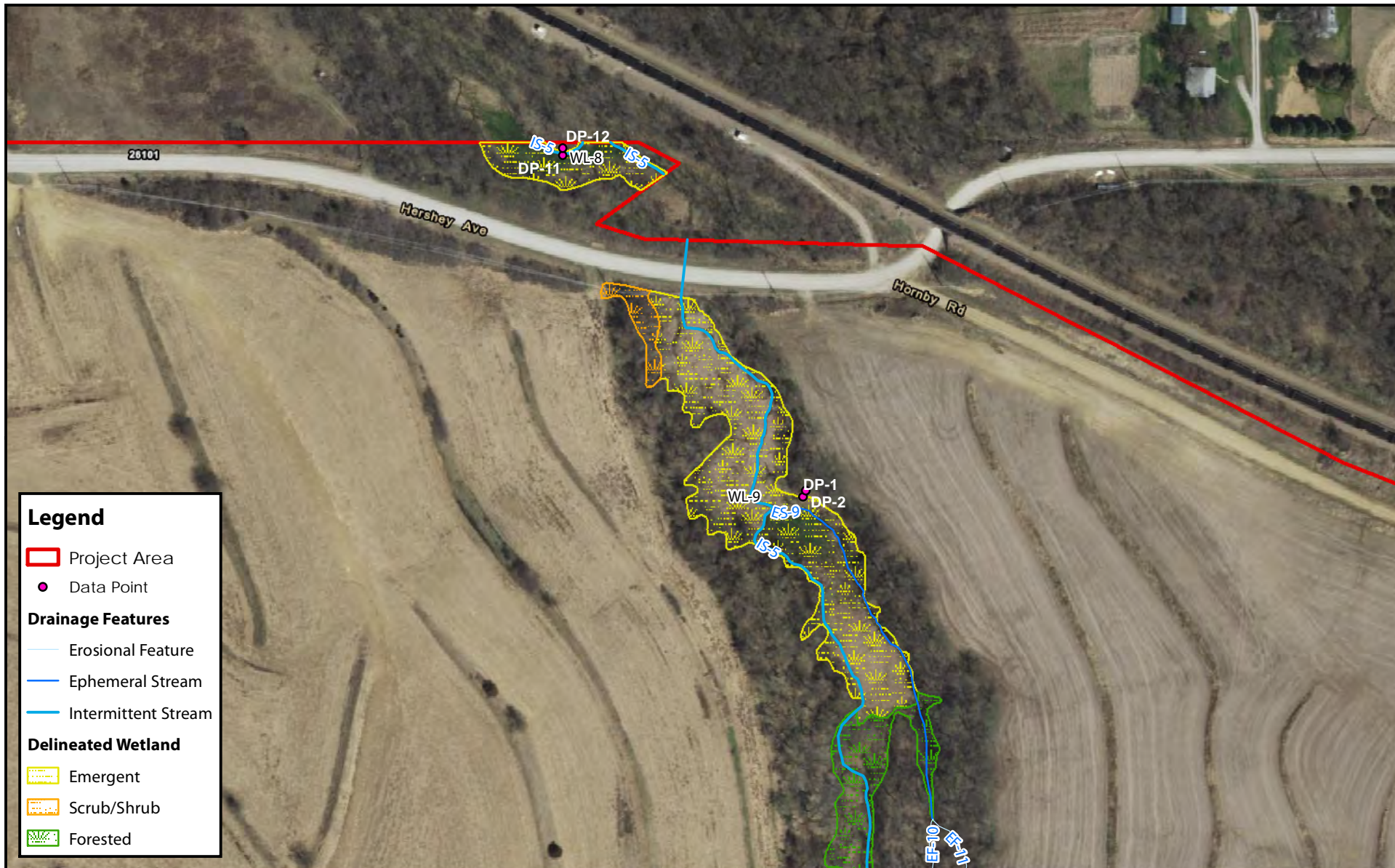
¹ Map(s)/Figure(s) are attached to the AJD provided to the requestor.

² If the navigable water is not subject to the ebb and flow of the tide or included on the District's list of Rivers and Harbors Act Section 10 navigable waters list, do NOT use this document to make the determination. The District must continue to follow the procedure outlined in 33 CFR part 329.14 to make a Rivers and Harbors Act Section 10 navigability determination.

³ A stand-alone TNW determination is completed independently of a request for an AJD. A stand-alone TNW determination is conducted for a specific segment of river or stream or other type of waterbody, such as a lake, where independent upstream or downstream limits or lake borders are established. A stand-alone TNW determination should be completed following applicable guidance and should NOT be documented on the AJD form.

⁴ Some excluded waters, such as (b)(2) and (b)(4), may not be specifically identified on the AJD form unless a requestor specifically asks a Corps district to do so. Corps Districts may, in case-by-case instances, choose to identify some or all of these waters within the review area.

⁵ Because of the broad nature of the (b)(1) exclusion and in an effort to collect data on specific types of waters that would be covered by the (b)(1) exclusion, four sub-categories of (b)(1) exclusions were administratively created for the purposes of the AJD Form. These four sub-categories are not new exclusions, but are simply administrative distinctions and remain (b)(1) exclusions as defined by the NWPR.



SHIVEHATTERY
ARCHITECTURE+ENGINEERING

Figure 7a: Wetland Delineation Expanded, Page 1 of 21

Orchard Hills | Mills County, Iowa | Project #4204000

Data Sources: ISU Iowa Geographic Map Server

0 100 200
Feet





SHIVEHATTERY
ARCHITECTURE+ENGINEERING

Figure 7a: Wetland Delineation Expanded, Page 2 of 21

Orchard Hills | Mills County, Iowa | Project #4204000

Data Sources: ISU Iowa Geographic Map Server

0 100 200
Feet





Legend

Project Area

● Data Point

Drainage Features

Ephemeral Stream

Intermittent Stream

SHIVEHATTERY
ARCHITECTURE+ENGINEERING

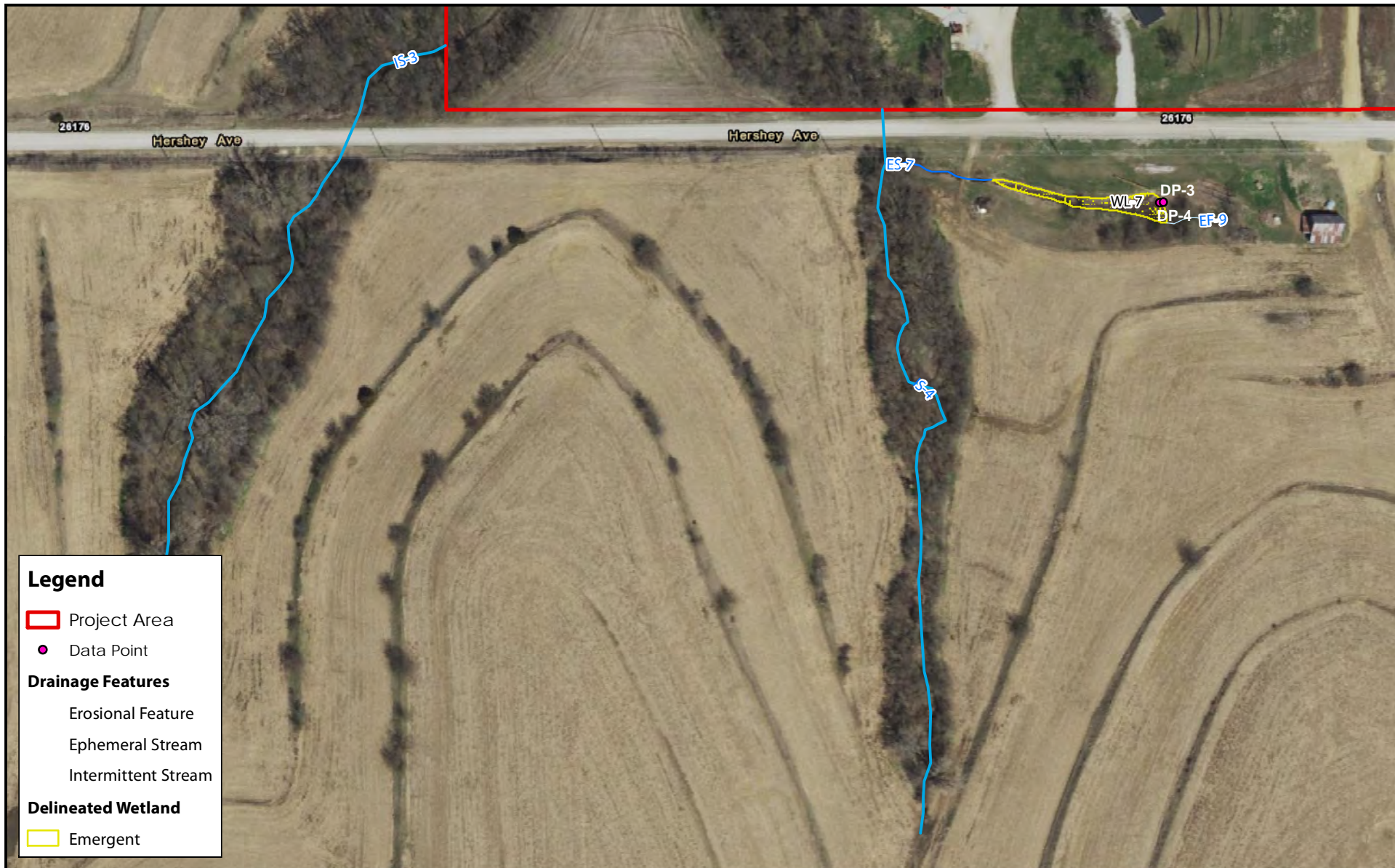
Figure 7a: Wetland Delineation Expanded, Page 3 of 21

Orchard Hills | Mills County, Iowa | Project #4204000

Data Sources: ISU Iowa Geographic Map Server

0 100 200
Feet





Legend

Project Area

● Data Point

Drainage Features

Erosional Feature

Ephemeral Stream

Intermittent Stream

Delineated Wetland

Emergent

SHIVEHATTERY
ARCHITECTURE+ENGINEERING

Figure 7a: Wetland Delineation Expanded, Page 4 of 21

Orchard Hills | Mills County, Iowa | Project #4204000

Data Sources: ISU Iowa Geographic Map Server

0 100 200
Feet





Legend

Project Area

● Data Point

Drainage Features

— Ephemeral Stream

— Perennial Stream

Delineated Wetland

Emergent

Scrub/Shrub

Forested

SHIVEHATTERY
ARCHITECTURE+ENGINEERING

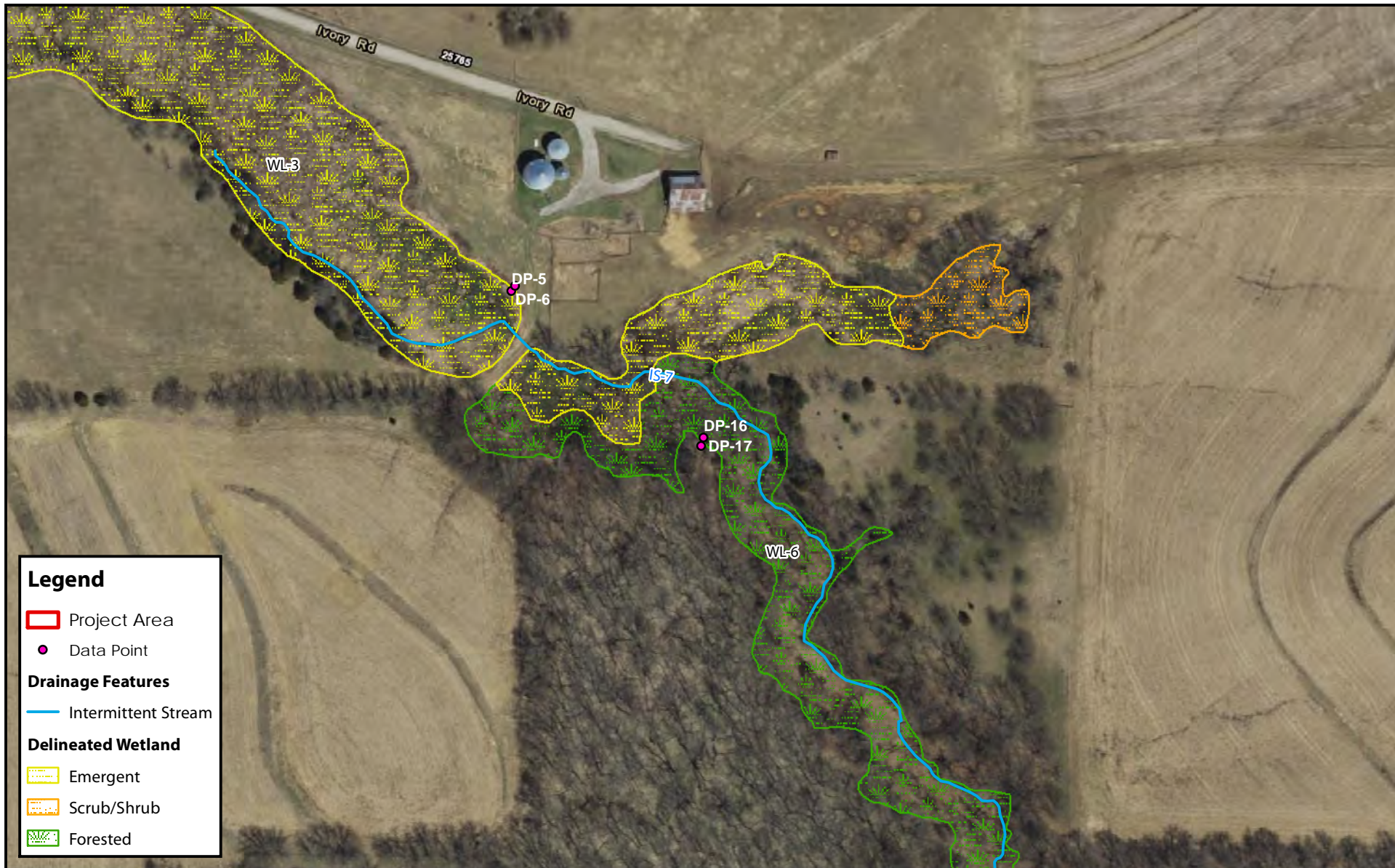
Figure 7a: Wetland Delineation Expanded, Page 5 of 21

Orchard Hills | Mills County, Iowa | Project #4204000

Data Sources: ISU Iowa Geographic Map Server

0 100 200
Feet





Legend

Project Area

● Data Point

Drainage Features

— Intermittent Stream

Delineated Wetland

Emergent

Scrub/Shrub

Forested

SHIVEHATTERY
ARCHITECTURE+ENGINEERING

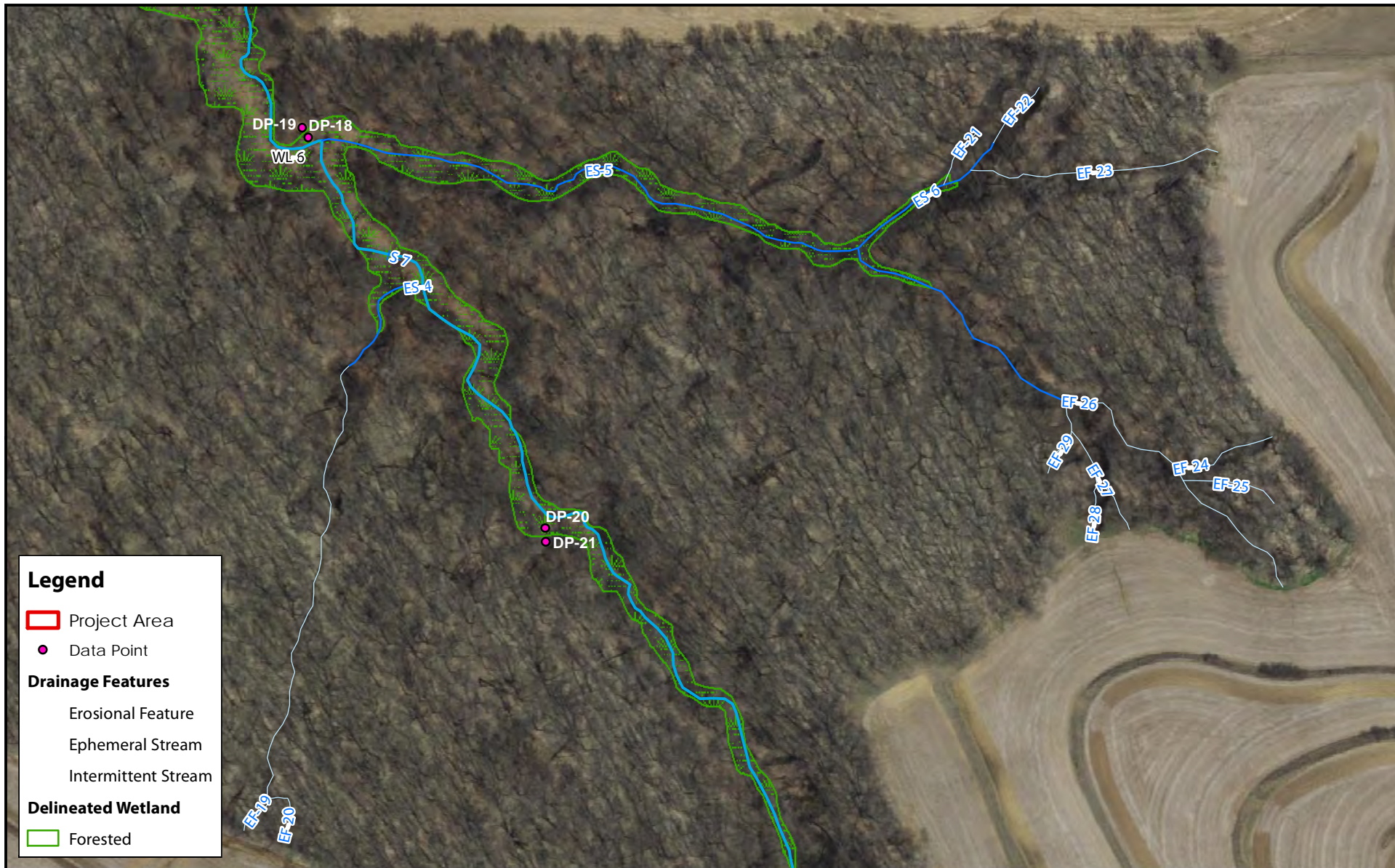
Figure 7a: Wetland Delineation Expanded, Page 6 of 21

Orchard Hills | Mills County, Iowa | Project #4204000

Data Sources: ISU Iowa Geographic Map Server

0 100 200
Feet





SHIVEHATTERY
ARCHITECTURE+ENGINEERING

Figure 7a: Wetland Delineation Expanded, Page 7 of 21

Orchard Hills | Mills County, Iowa | Project #4204000

Data Sources: ISU Iowa Geographic Map Server

0 100 200
Feet





Legend

Project Area

Drainage Features

Erosional Feature

Intermittent Stream

Delineated Wetland

Forested

SHIVEHATTERY
ARCHITECTURE+ENGINEERING

Figure 7a: Wetland Delineation Expanded, Page 8 of 21

Orchard Hills | Mills County, Iowa | Project #4204000

Data Sources: ISU Iowa Geographic Map Server

0 100 200
Feet



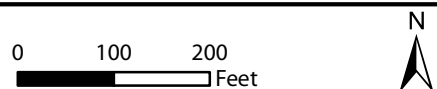


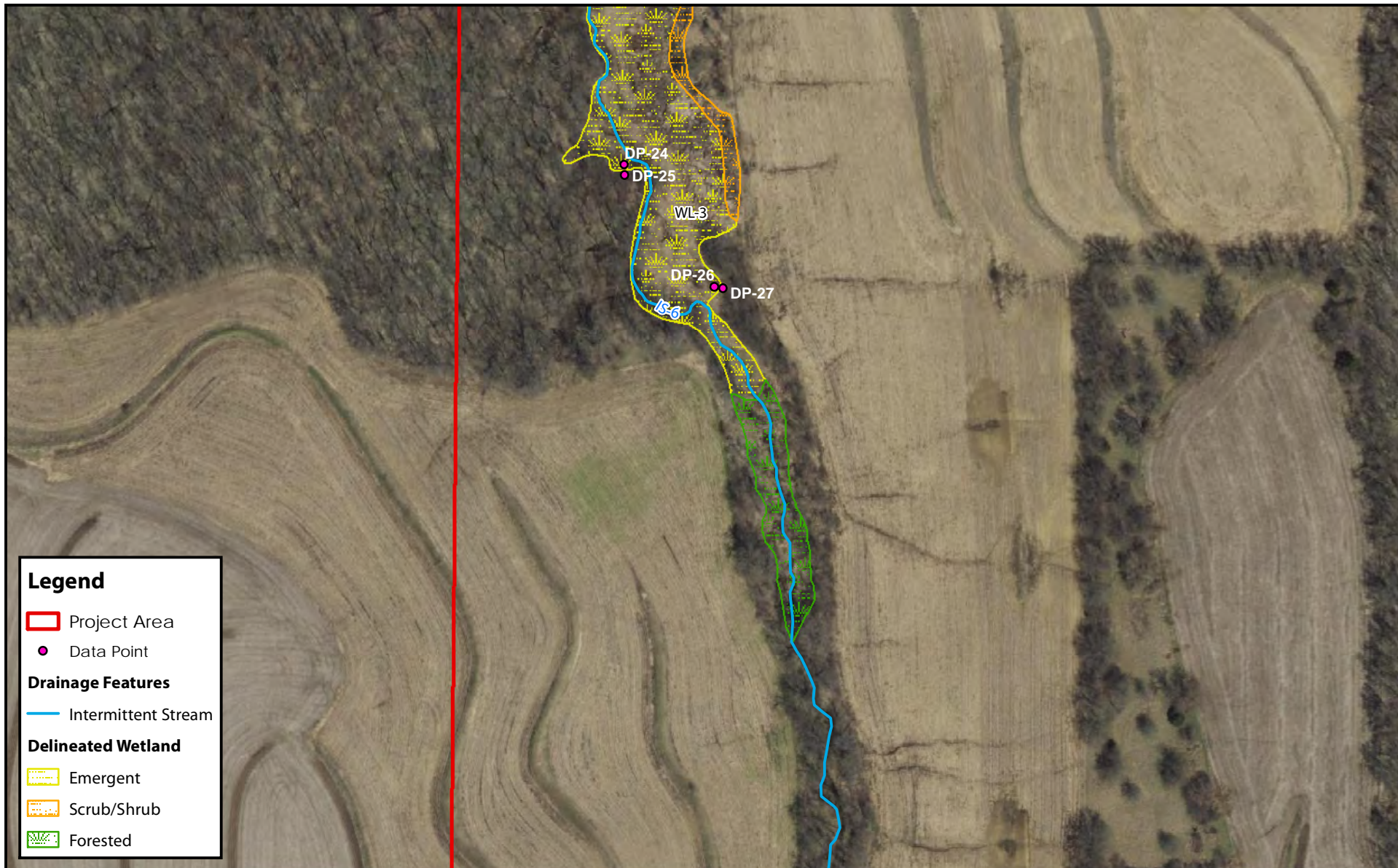
SHIVEHATTERY
ARCHITECTURE+ENGINEERING

Figure 7a: Wetland Delineation Expanded, Page 9 of 21

Orchard Hills | Mills County, Iowa | Project #4204000

Data Sources: ISU Iowa Geographic Map Server





SHIVEHATTERY
ARCHITECTURE+ENGINEERING

Figure 7a: Wetland Delineation Expanded, Page 10 of 21

Orchard Hills | Mills County, Iowa | Project #4204000

Data Sources: ISU Iowa Geographic Map Server

0 100 200
Feet





SHIVEHATTERY
ARCHITECTURE+ENGINEERING

Figure 7a: Wetland Delineation Expanded, Page 11 of 21

Orchard Hills | Mills County, Iowa | Project #4204000

Data Sources: ISU Iowa Geographic Map Server

0 100 200
Feet





Legend

- ▬ Project Area
- Data Point

Drainage Features

- Erosional Feature
- Intermittent Stream
- Perennial Stream

SHIVEHATTERY
ARCHITECTURE+ENGINEERING

Figure 7a: Wetland Delineation Expanded, Page 12 of 21

Orchard Hills | Mills County, Iowa | Project #4204000

Data Sources: ISU Iowa Geographic Map Server





SHIVEHATTERY
ARCHITECTURE+ENGINEERING

Figure 7a: Wetland Delineation Expanded, Page 13 of 21

Orchard Hills | Mills County, Iowa | Project #4204000

Data Sources: ISU Iowa Geographic Map Server

0 100 200
Feet





Legend

Project Area

● Data Point

Drainage Features

Erosional Feature

Intermittent Stream

SHIVEHATTERY
ARCHITECTURE+ENGINEERING

Figure 7a: Wetland Delineation Expanded, Page 14 of 21

Orchard Hills | Mills County, Iowa | Project #4204000

Data Sources: ISU Iowa Geographic Map Server

0 100 200
Feet





SHIVEHATTERY
ARCHITECTURE+ENGINEERING

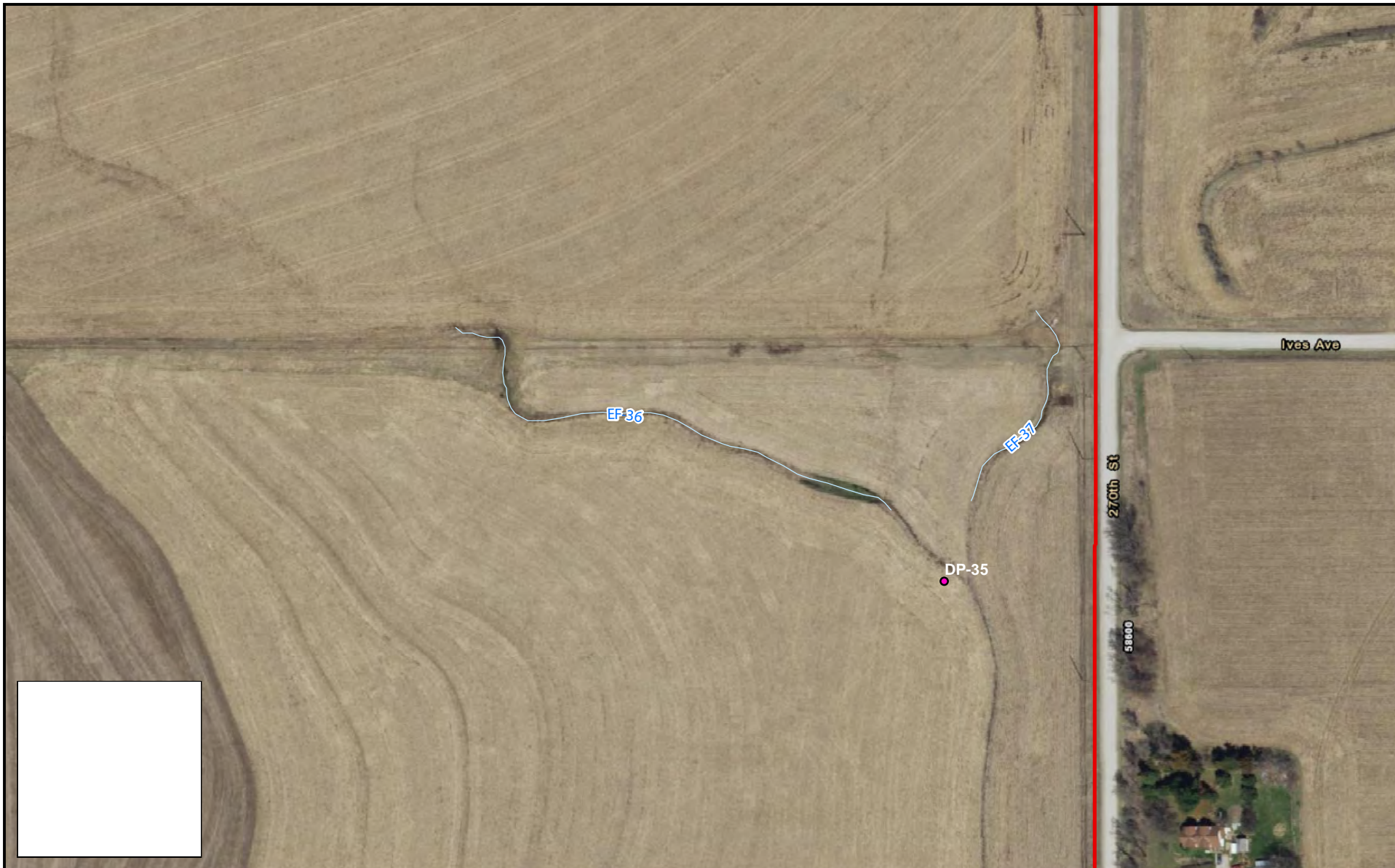
Figure 7a: Wetland Delineation Expanded, Page 15 of 21

Orchard Hills | Mills County, Iowa | Project #4204000

Data Sources: ISU Iowa Geographic Map Server

0 100 200
Feet





SHIVEHATTERY
ARCHITECTURE+ENGINEERING

Figure 7a: Wetland Delineation Expanded, Page 16 of 21

Orchard Hills | Mills County, Iowa | Project #4204000

Data Sources: ISU Iowa Geographic Map Server

0 100 200
Feet






Legend

 Project Area

Drainage Features

 Erosional Feature

SHIVEHATTERY
ARCHITECTURE+ENGINEERING

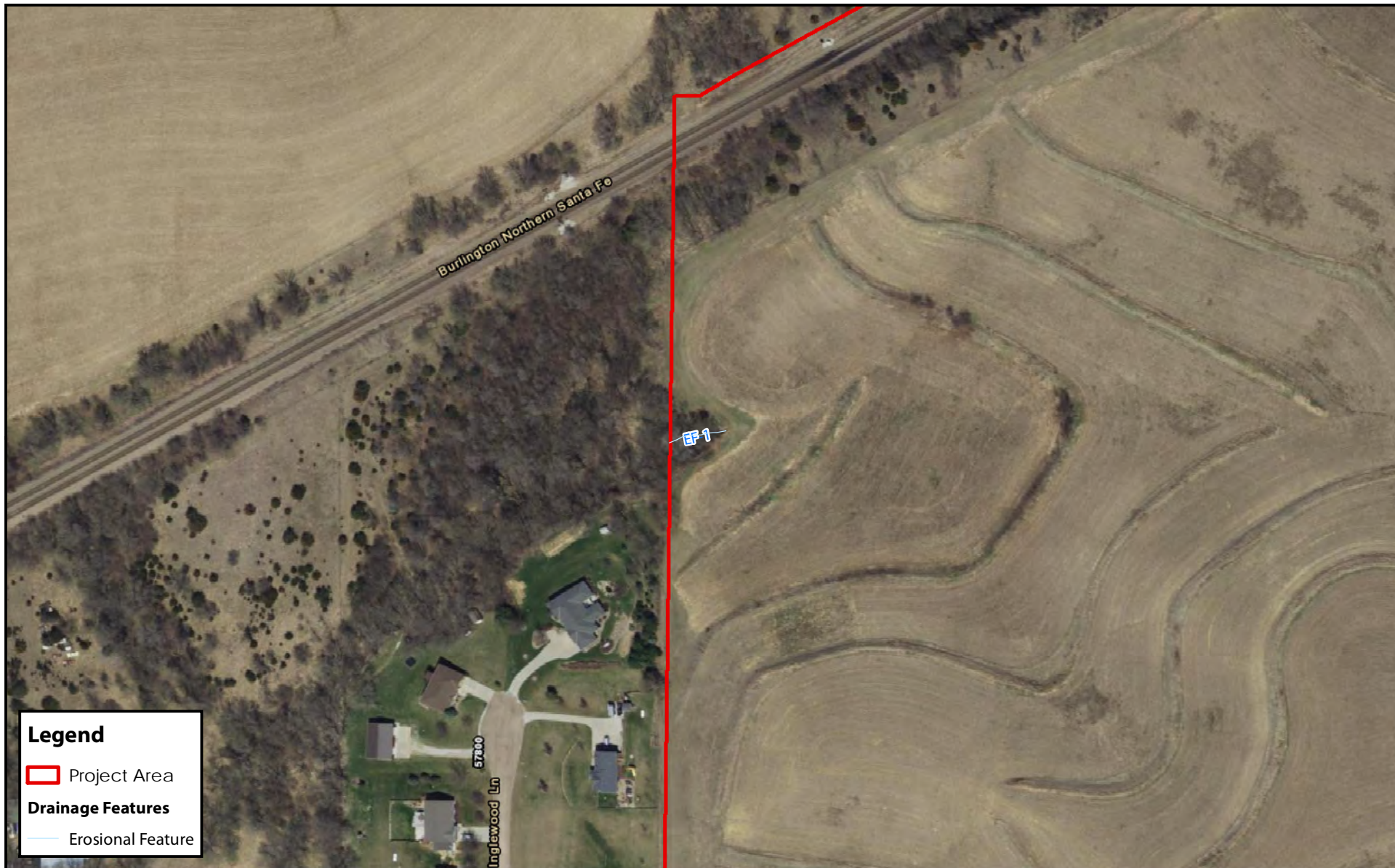
Figure 7a: Wetland Delineation Expanded, Page 18 of 21

Orchard Hills | Mills County, Iowa | Project #4204000

Data Sources: ISU Iowa Geographic Map Server

0 100 200
Feet





Legend

Project Area

Drainage Features

— Erosional Feature

SHIVEHATTERY
ARCHITECTURE+ENGINEERING

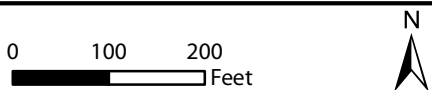
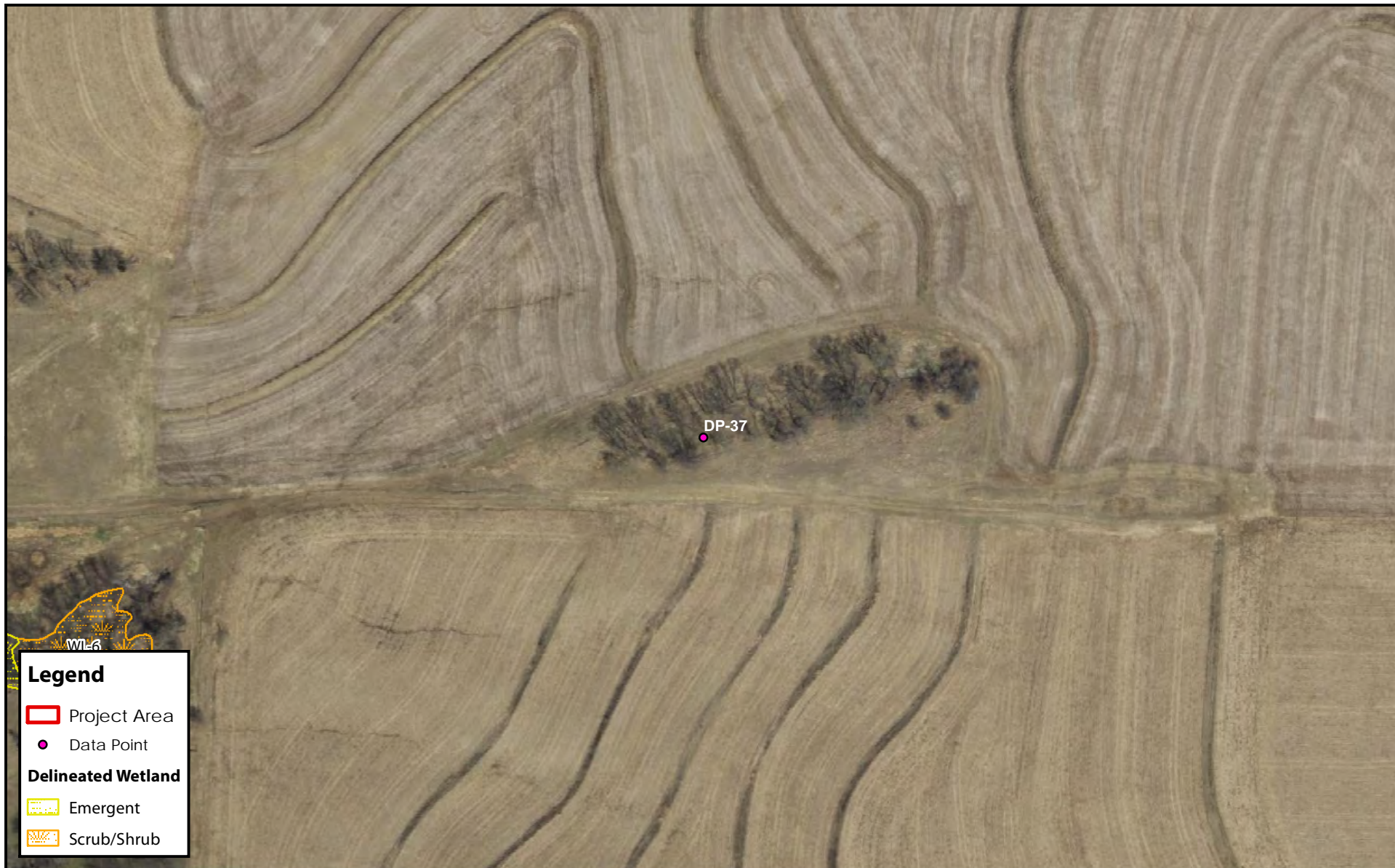


Figure 7a: Wetland Delineation Expanded, Page 19 of 21

Orchard Hills | Mills County, Iowa | Project #4204000

Data Sources: ISU Iowa Geographic Map Server





SHIVEHATTERY
ARCHITECTURE+ENGINEERING

Figure 7a: Wetland Delineation Expanded, Page 20 of 21

Orchard Hills | Mills County, Iowa | Project #4204000

Data Sources: ISU Iowa Geographic Map Server





Legend

-  Project Area
-  Data Point

SHIVEHATTERY
ARCHITECTURE+ENGINEERING

0 100 200
Feet



Figure 7a: Wetland Delineation Expanded, Page 21 of 21

Orchard Hills | Mills County, Iowa | Project #4204000

Data Sources: ISU Iowa Geographic Map Server

