



U.S. ARMY CORPS OF ENGINEERS  
REGULATORY PROGRAM  
APPROVED JURISDICTIONAL DETERMINATION FORM (INTERIM)  
NAVIGABLE WATERS PROTECTION RULE

**I. ADMINISTRATIVE INFORMATION**

Completion Date of Approved Jurisdictional Determination (AJD): 03-NOV-2020  
ORM Number: MVR-2020-00904-KLB  
Associated JDs: N/A or ORM numbers and identifiers (e.g. HQS-2020-00001-MSW-MITSITE)  
Review Area Location<sup>1</sup>:  
State/Territory: IA City: County/Parish/Borough: Webster County  
Center Coordinates of Review Area: Latitude 42.573324 Longitude -94.097131

**II. FINDINGS**

**A. Summary:** Check all that apply. At least one box from the following list **MUST** be selected. Complete the corresponding sections/tables and summarize data sources.

- The review area is comprised entirely of dry land (i.e., there are no waters or water features, including wetlands, of any kind in the entire review area). Rationale: N/A or describe rationale.
- There are “navigable waters of the United States” within Rivers and Harbors Act jurisdiction within the review area (complete table in section II.B).
- There are “waters of the United States” within Clean Water Act jurisdiction within the review area (complete appropriate tables in section II.C).
- There are waters or water features excluded from Clean Water Act jurisdiction within the review area (complete table in section II.D).

**B. Rivers and Harbors Act of 1899 Section 10 (§ 10)<sup>2</sup>**

§ 10 Name	§ 10 Size	§ 10 Criteria	Rationale for § 10 Determination
N/A	N/A	N/A	N/A

**C. Clean Water Act Section 404**

Territorial Seas and Traditional Navigable Waters ((a)(1) waters)<sup>3</sup>

(a)(1) Name	(a)(1) Size	(a)(1) Criteria	Rationale for (a)(1) Determination
N/A	N/A	N/A	N/A

Tributaries ((a)(2) waters):

(a)(2) Name	(a)(2) Size	(a)(2) Criteria	Rationale for (a)(2) Determination
N/A	N/A	N/A	N/A

Lakes and ponds, and impoundments of jurisdictional waters ((a)(3) waters):

(a)(3) Name	(a)(3) Size	(a)(3) Criteria	Rationale for (a)(3) Determination
N/A	N/A	N/A	N/A

Adjacent wetlands ((a)(4) waters):

(a)(4) Name	(a)(4) Size	(a)(4) Criteria	Rationale for (a)(4) Determination
N/A	N/A	N/A	N/A

<sup>1</sup> Map(s)/Figure(s) are attached to the AJD provided to the requestor.

<sup>2</sup> If the navigable water is not subject to the ebb and flow of the tide and included on the District's list of Rivers and Harbors Act Section 10 navigable waters list, do NOT use this document to make the determination. The District must continue to follow the procedure outlined in 33 CFR part 329.14 to make a Rivers and Harbors Act Section 10 navigability determination.

<sup>3</sup> A stand-alone TNW determination is completed independently of a request for an AJD. A stand-alone TNW determination is conducted for a specific segment of river or stream or other type of waterbody, such as a lake, where independent upstream or downstream limits or lake borders are established. A stand-alone TNW determination should be completed following applicable guidance and should NOT be documented on the AJD form.

<sup>4</sup> Some excluded waters, such as (b)(2) and (b)(4), may not be specifically identified on the AJD form unless a requestor specifically asks a Corps district to do so. Corps Districts may, in case-by-case instances, choose to identify some or all of these waters within the review area.

<sup>5</sup> Because of the broad nature of the (b)(1) exclusion and in an effort to collect data on specific types of waters that would be covered by the (b)(1) exclusion, four sub-categories of (b)(1) exclusions were administratively created for the purposes of the AJD Form. These four sub-categories are not new exclusions, but are simply administrative distinctions and remain (b)(1) exclusions as defined by the NWPR.



U.S. ARMY CORPS OF ENGINEERS  
REGULATORY PROGRAM  
APPROVED JURISDICTIONAL DETERMINATION FORM (INTERIM)  
NAVIGABLE WATERS PROTECTION RULE

**D. Excluded Waters or Features**

Excluded waters ((b)(1) – (b)(12))<sup>4</sup>:

Exclusion Name	Exclusion Size	Exclusion <sup>5</sup>	Rationale for Exclusion Determination
WA001	0.55 acres	(b)(1) Non-adjacent wetland	Wetland is isolated prairie-pothole, is not connected to other WOTUS
WA002	0.07 acres	(b)(1) Non-adjacent wetland	Wetland is isolated prairie-pothole, is not connected to other WOTUS
WA005	0.29 acres	(b)(1) Non-adjacent wetland	Wetland is isolated prairie-pothole, is not connected to other WOTUS Wetland is isolated prairie-pothole, is not connected to other WOTUS
WA006	0.74 acres	(b)(1) Non-adjacent wetland	Wetland is isolated prairie-pothole, is not connected to other WOTUS
WA007	0.12 acres	(b)(1) Non-adjacent wetland	Wetland is isolated prairie-pothole, is not connected to other WOTUS
WA011	0.53 acres	(b)(1) Non-adjacent wetland	Wetland is isolated prairie-pothole, is not connected to other WOTUS
WA013	0.02 acres	(b)(1) Non-adjacent wetland	Wetland is isolated prairie-pothole, is not connected to other WOTUS
WA014	0.13 acres	(b)(1) Non-adjacent wetland	Wetland is isolated prairie-pothole, is not connected to other WOTUS
WA015	0.29 acres	(b)(1) Non-adjacent wetland	Wetland is isolated prairie-pothole, is not connected to other WOTUS
WA016	0.34 acres	(b)(1) Non-adjacent wetland	Wetland is isolated prairie-pothole, is not connected to other WOTUS
WA017	0.19 acres	(b)(1) Non-adjacent wetland	Wetland is isolated prairie-pothole, is not connected to other WOTUS
WA018	0.06 acres	(b)(1) Non-adjacent wetland	Wetland is isolated prairie-pothole, is not connected to other WOTUS
WA019	0.1 acres	(b)(1) Non-adjacent wetland	Wetland is isolated prairie-pothole, is not connected to other WOTUS
WA021	0.22 acres	(b)(1) Non-adjacent wetland	Wetland is isolated prairie-pothole, is not connected to other WOTUS
WA023	0.08 acres	(b)(1) Non-adjacent wetland	Wetland is isolated prairie-pothole, is not connected to other WOTUS
WA024	0.08 acres	(b)(1) Non-adjacent wetland	Wetland is isolated prairie-pothole, is not connected to other WOTUS
WA026	1.09 acres	(b)(1) Non-adjacent wetland	Wetland is isolated prairie-pothole, is not connected to other WOTUS
WA027	0.26 acres	(b)(1) Non-adjacent wetland	Wetland is isolated prairie-pothole, is not connected to other WOTUS
WA028	0.23 acres	(b)(1) Non-adjacent wetland	Wetland is isolated prairie-pothole, is not connected to other WOTUS
WA029	0.38 acres	(b)(1) Non-adjacent wetland	Wetland is isolated prairie-pothole, is not connected to other WOTUS
WA030	0.17 acres	(b)(1) Non-adjacent wetland	Wetland is isolated prairie-pothole, is not connected to other WOTUS
WA031	0.21 acres	(b)(1) Non-adjacent wetland	Wetland is isolated prairie-pothole, is not connected to other WOTUS
WA034	0.19 acres	(b)(1) Non-adjacent wetland	Wetland is isolated prairie-pothole, is not connected to

<sup>1</sup> Map(s)/Figure(s) are attached to the AJD provided to the requestor.

<sup>2</sup> If the navigable water is not subject to the ebb and flow of the tide and included on the District's list of Rivers and Harbors Act Section 10 navigable waters list, do NOT use this document to make the determination. The District must continue to follow the procedure outlined in 33 CFR part 329.14 to make a Rivers and Harbors Act Section 10 navigability determination.

<sup>3</sup> A stand-alone TNW determination is completed independently of a request for an AJD. A stand-alone TNW determination is conducted for a specific segment of river or stream or other type of waterbody, such as a lake, where independent upstream or downstream limits or lake borders are established. A stand-alone TNW determination should be completed following applicable guidance and should NOT be documented on the AJD form.

<sup>4</sup> Some excluded waters, such as (b)(2) and (b)(4), may not be specifically identified on the AJD form unless a requestor specifically asks a Corps district to do so. Corps Districts may, in case-by-case instances, choose to identify some or all of these waters within the review area.

<sup>5</sup> Because of the broad nature of the (b)(1) exclusion and in an effort to collect data on specific types of waters that would be covered by the (b)(1) exclusion, four sub-categories of (b)(1) exclusions were administratively created for the purposes of the AJD Form. These four sub-categories are not new exclusions, but are simply administrative distinctions and remain (b)(1) exclusions as defined by the NWPR.



U.S. ARMY CORPS OF ENGINEERS  
REGULATORY PROGRAM  
APPROVED JURISDICTIONAL DETERMINATION FORM (INTERIM)  
NAVIGABLE WATERS PROTECTION RULE

			other WOTUS
WA037	3.56 acres	(b)(1) Non-adjacent wetland	Wetland is isolated prairie-pothole, is not connected to other WOTUS
WA038	0.58 acres	(b)(1) Non-adjacent wetland	Wetland is isolated prairie-pothole, is not connected to other WOTUS
WA039	0.76 acres	(b)(1) Non-adjacent wetland	Wetland is isolated prairie-pothole, is not connected to other WOTUS
WA040	0.4 acres	(b)(1) Non-adjacent wetland	Wetland is isolated prairie-pothole, is not connected to other WOTUS
WA042	0.17 acres	(b)(1) Non-adjacent wetland	Wetland is isolated prairie-pothole, is not connected to other WOTUS
WA043	0.13 acres	(b)(1) Non-adjacent wetland	Wetland is isolated prairie-pothole, is not connected to other WOTUS
WA044	0.16 acres	(b)(1) Non-adjacent wetland	Wetland is isolated prairie-pothole, is not connected to other WOTUS
WA045	0.27 acres	(b)(1) Non-adjacent wetland	Wetland is isolated prairie-pothole, is not connected to other WOTUS
WA046	0.08 acres	(b)(1) Non-adjacent wetland	Wetland is isolated prairie-pothole, is not connected to other WOTUS
WA048	0.06 acres	(b)(1) Non-adjacent wetland	Wetland is isolated prairie-pothole, is not connected to other WOTUS
WA049	0.14 acres	(b)(1) Non-adjacent wetland	Wetland is isolated prairie-pothole, is not connected to other WOTUS
WA050	0.31 acres	(b)(1) Non-adjacent wetland	Wetland is isolated prairie-pothole, is not connected to other WOTUS
WA051	0.24 acres	(b)(1) Non-adjacent wetland	Wetland is isolated prairie-pothole, is not connected to other WOTUS
WA054	0.84 acres	(b)(1) Non-adjacent wetland	Wetland is isolated prairie-pothole, is not connected to other WOTUS
WA055	0.28 acres	(b)(1) Non-adjacent wetland	Wetland is isolated prairie-pothole, is not connected to other WOTUS
WA056	3.46 acres	(b)(1) Non-adjacent wetland	Wetland is isolated prairie-pothole, is not connected to other WOTUS
WA058	0.51 acres	(b)(1) Non-adjacent wetland	Wetland is isolated prairie-pothole, is not connected to other WOTUS
WA059	0.23 acres	(b)(1) Non-adjacent wetland	Wetland is isolated prairie-pothole, is not connected to other WOTUS
WA064	0.27 acres	(b)(1) Non-adjacent wetland	Wetland is isolated prairie-pothole, is not connected to other WOTUS
WA065	0.81 acres	(b)(1) Non-adjacent wetland	Wetland is isolated prairie-pothole, is not connected to other WOTUS
WA066	0.15 acres	(b)(1) Non-adjacent wetland	Wetland is isolated prairie-pothole, is not connected to other WOTUS
WA067	0.23 acres	(b)(1) Non-adjacent wetland	Wetland is isolated prairie-pothole, is not connected to other WOTUS
WA068	0.66 acres	(b)(1) Non-adjacent wetland	Wetland is isolated prairie-pothole, is not connected to other WOTUS
WA071	0.27 acres	(b)(1) Non-adjacent wetland	Wetland is isolated prairie-pothole, is not connected to other WOTUS
WA075	0.04 acres	(b)(1) Non-adjacent wetland	Wetland is isolated prairie-pothole, is not connected to other WOTUS

<sup>1</sup> Map(s)/Figure(s) are attached to the AJD provided to the requestor.

<sup>2</sup> If the navigable water is not subject to the ebb and flow of the tide and included on the District's list of Rivers and Harbors Act Section 10 navigable waters list, do NOT use this document to make the determination. The District must continue to follow the procedure outlined in 33 CFR part 329.14 to make a Rivers and Harbors Act Section 10 navigability determination.

<sup>3</sup> A stand-alone TNW determination is completed independently of a request for an AJD. A stand-alone TNW determination is conducted for a specific segment of river or stream or other type of waterbody, such as a lake, where independent upstream or downstream limits or lake borders are established. A stand-alone TNW determination should be completed following applicable guidance and should NOT be documented on the AJD form.

<sup>4</sup> Some excluded waters, such as (b)(2) and (b)(4), may not be specifically identified on the AJD form unless a requestor specifically asks a Corps district to do so. Corps Districts may, in case-by-case instances, choose to identify some or all of these waters within the review area.

<sup>5</sup> Because of the broad nature of the (b)(1) exclusion and in an effort to collect data on specific types of waters that would be covered by the (b)(1) exclusion, four sub-categories of (b)(1) exclusions were administratively created for the purposes of the AJD Form. These four sub-categories are not new exclusions, but are simply administrative distinctions and remain (b)(1) exclusions as defined by the NWPR.



U.S. ARMY CORPS OF ENGINEERS  
REGULATORY PROGRAM  
APPROVED JURISDICTIONAL DETERMINATION FORM (INTERIM)  
NAVIGABLE WATERS PROTECTION RULE

WA080	0.32 acres	(b)(1) Non-adjacent wetland	Wetland is isolated prairie-pothole, is not connected to other WOTUS
WA081	0.08 acres	(b)(1) Non-adjacent wetland	Wetland is isolated prairie-pothole, is not connected to other WOTUS
WA084	0.07 acres	(b)(1) Non-adjacent wetland	Wetland is isolated prairie-pothole, is not connected to other WOTUS
WA085	0.32 acres	(b)(1) Non-adjacent wetland	Wetland is isolated prairie-pothole, is not connected to other WOTUS
WA087	0.31 acres	(b)(1) Non-adjacent wetland	Wetland is isolated prairie-pothole, is not connected to other WOTUS
WA088	0.96 acres	(b)(1) Non-adjacent wetland	Wetland is isolated prairie-pothole, is not connected to other WOTUS
WA089	0.36 acres	(b)(1) Non-adjacent wetland	Wetland is isolated prairie-pothole, is not connected to other WOTUS
WA091	0.33 acres	(b)(1) Non-adjacent wetland	Wetland is isolated prairie-pothole, is not connected to other WOTUS
WA095	0.09 acres	(b)(1) Non-adjacent wetland	Wetland is isolated prairie-pothole, is not connected to other WOTUS
WA096	0.48 acres	(b)(1) Non-adjacent wetland	Wetland is isolated prairie-pothole, is not connected to other WOTUS
WA097	0.09 acres	(b)(1) Non-adjacent wetland	Wetland is isolated prairie-pothole, is not connected to other WOTUS
WA098	0.18 acres	(b)(1) Non-adjacent wetland	Wetland is isolated prairie-pothole, is not connected to other WOTUS
WA099	0.04 acres	(b)(1) Non-adjacent wetland	Wetland is isolated prairie-pothole, is not connected to other WOTUS
WA100	0.11 acres	(b)(1) Non-adjacent wetland	Wetland is isolated prairie-pothole, is not connected to other WOTUS
WA101	0.01 acres	(b)(1) Non-adjacent wetland	Wetland is isolated prairie-pothole, is not connected to other WOTUS
WA102	0.05 acres	(b)(1) Non-adjacent wetland	Wetland is isolated prairie-pothole, is not connected to other WOTUS
WA103	0.04 acres	(b)(1) Non-adjacent wetland	Wetland is isolated prairie-pothole, is not connected to other WOTUS
WA104	0.08 acres	(b)(1) Non-adjacent wetland	Wetland is isolated prairie-pothole, is not connected to other WOTUS
WA105	0.01 acres	(b)(1) Non-adjacent wetland	Wetland is isolated prairie-pothole, is not connected to other WOTUS
WA106	0.02 acres	(b)(1) Non-adjacent wetland	Wetland is isolated prairie-pothole, is not connected to other WOTUS
WA107	0.04 acres	(b)(1) Non-adjacent wetland	Wetland is isolated prairie-pothole, is not connected to other WOTUS
WA108	0.04 acres	(b)(1) Non-adjacent wetland	Wetland is isolated prairie-pothole, is not connected to other WOTUS
WA109	0.03 acres	(b)(1) Non-adjacent wetland	Wetland is isolated prairie-pothole, is not connected to other WOTUS
WA110	0.17 acres	(b)(1) Non-adjacent wetland	Wetland is isolated prairie-pothole, is not connected to other WOTUS
WB001	0.77 acres	(b)(1) Non-adjacent wetland	Wetland is isolated prairie-pothole, is not connected to other WOTUS
WB003	0.43 acres	(b)(1) Non-adjacent wetland	Wetland is isolated prairie-pothole, is not connected to other WOTUS

<sup>1</sup> Map(s)/Figure(s) are attached to the AJD provided to the requestor.

<sup>2</sup> If the navigable water is not subject to the ebb and flow of the tide and included on the District's list of Rivers and Harbors Act Section 10 navigable waters list, do NOT use this document to make the determination. The District must continue to follow the procedure outlined in 33 CFR part 329.14 to make a Rivers and Harbors Act Section 10 navigability determination.

<sup>3</sup> A stand-alone TNW determination is completed independently of a request for an AJD. A stand-alone TNW determination is conducted for a specific segment of river or stream or other type of waterbody, such as a lake, where independent upstream or downstream limits or lake borders are established. A stand-alone TNW determination should be completed following applicable guidance and should NOT be documented on the AJD form.

<sup>4</sup> Some excluded waters, such as (b)(2) and (b)(4), may not be specifically identified on the AJD form unless a requestor specifically asks a Corps district to do so. Corps Districts may, in case-by-case instances, choose to identify some or all of these waters within the review area.

<sup>5</sup> Because of the broad nature of the (b)(1) exclusion and in an effort to collect data on specific types of waters that would be covered by the (b)(1) exclusion, four sub-categories of (b)(1) exclusions were administratively created for the purposes of the AJD Form. These four sub-categories are not new exclusions, but are simply administrative distinctions and remain (b)(1) exclusions as defined by the NWPR.



U.S. ARMY CORPS OF ENGINEERS  
REGULATORY PROGRAM  
APPROVED JURISDICTIONAL DETERMINATION FORM (INTERIM)  
NAVIGABLE WATERS PROTECTION RULE

			other WOTUS
WB004	0.22 acres	(b)(1) Non-adjacent wetland	Wetland is isolated prairie-pothole, is not connected to other WOTUS
WB007	0.15 acres	(b)(1) Non-adjacent wetland	Wetland is isolated prairie-pothole, is not connected to other WOTUS
WB008	0.27 acres	(b)(1) Non-adjacent wetland	Wetland is isolated prairie-pothole, is not connected to other WOTUS
WB009	0.24 acres	(b)(1) Non-adjacent wetland	Wetland is isolated prairie-pothole, is not connected to other WOTUS
WB010	0.56 acres	(b)(1) Non-adjacent wetland	Wetland is isolated prairie-pothole, is not connected to other WOTUS
WB012	0.59 acres	(b)(1) Non-adjacent wetland	Wetland is isolated prairie-pothole, is not connected to other WOTUS
WB014	0.29 acres	(b)(1) Non-adjacent wetland	Wetland is isolated prairie-pothole, is not connected to other WOTUS
WB015	0.1 acres	(b)(1) Non-adjacent wetland	Wetland is isolated prairie-pothole, is not connected to other WOTUS
WB016	0.2 acres	(b)(1) Non-adjacent wetland	Wetland is isolated prairie-pothole, is not connected to other WOTUS
WB017	0.63 acres	(b)(1) Non-adjacent wetland	Wetland is isolated prairie-pothole, is not connected to other WOTUS
WB018	0.48 acres	(b)(1) Non-adjacent wetland	Wetland is isolated prairie-pothole, is not connected to other WOTUS
WB019	0.14 acres	(b)(1) Non-adjacent wetland	Wetland is isolated prairie-pothole, is not connected to other WOTUS
WB020	0.07 acres	(b)(1) Non-adjacent wetland	Wetland is isolated prairie-pothole, is not connected to other WOTUS
WB021	0.17 acres	(b)(1) Non-adjacent wetland	Wetland is isolated prairie-pothole, is not connected to other WOTUS
WB022	0.05 acres	(b)(1) Non-adjacent wetland	Wetland is isolated prairie-pothole, is not connected to other WOTUS
WB023	0.09 acres	(b)(1) Non-adjacent wetland	Wetland is isolated prairie-pothole, is not connected to other WOTUS
WB024	0.04 acres	(b)(1) Non-adjacent wetland	Wetland is isolated prairie-pothole, is not connected to other WOTUS
WB028	0.09 acres	(b)(1) Non-adjacent wetland	Wetland is isolated prairie-pothole, is not connected to other WOTUS
WB029	0.38 acres	(b)(1) Non-adjacent wetland	Wetland is isolated prairie-pothole, is not connected to other WOTUS
WB031	0.13 acres	(b)(1) Non-adjacent wetland	Wetland is isolated prairie-pothole, is not connected to other WOTUS
WB033	0.31 acres	(b)(1) Non-adjacent wetland	Wetland is isolated prairie-pothole, is not connected to other WOTUS
WB035	0.11 acres	(b)(1) Non-adjacent wetland	Wetland is isolated prairie-pothole, is not connected to other WOTUS
WB039	0.2 acres	(b)(1) Non-adjacent wetland	Wetland is isolated prairie-pothole, is not connected to other WOTUS
WB040	0.98 acres	(b)(1) Non-adjacent wetland	Wetland is isolated prairie-pothole, is not connected to other WOTUS
WB043	0.06 acres	(b)(1) Non-adjacent wetland	Wetland is isolated prairie-pothole, is not connected to other WOTUS

<sup>1</sup> Map(s)/Figure(s) are attached to the AJD provided to the requestor.

<sup>2</sup> If the navigable water is not subject to the ebb and flow of the tide and included on the District's list of Rivers and Harbors Act Section 10 navigable waters list, do NOT use this document to make the determination. The District must continue to follow the procedure outlined in 33 CFR part 329.14 to make a Rivers and Harbors Act Section 10 navigability determination.

<sup>3</sup> A stand-alone TNW determination is completed independently of a request for an AJD. A stand-alone TNW determination is conducted for a specific segment of river or stream or other type of waterbody, such as a lake, where independent upstream or downstream limits or lake borders are established. A stand-alone TNW determination should be completed following applicable guidance and should NOT be documented on the AJD form.

<sup>4</sup> Some excluded waters, such as (b)(2) and (b)(4), may not be specifically identified on the AJD form unless a requestor specifically asks a Corps district to do so. Corps Districts may, in case-by-case instances, choose to identify some or all of these waters within the review area.

<sup>5</sup> Because of the broad nature of the (b)(1) exclusion and in an effort to collect data on specific types of waters that would be covered by the (b)(1) exclusion, four sub-categories of (b)(1) exclusions were administratively created for the purposes of the AJD Form. These four sub-categories are not new exclusions, but are simply administrative distinctions and remain (b)(1) exclusions as defined by the NWPR.



U.S. ARMY CORPS OF ENGINEERS  
REGULATORY PROGRAM  
APPROVED JURISDICTIONAL DETERMINATION FORM (INTERIM)  
NAVIGABLE WATERS PROTECTION RULE

**III. SUPPORTING INFORMATION**

**A. Select/enter all resources** that were used to aid in this determination and attach data/maps to this document and/or references/citations in the administrative record, as appropriate.

Information submitted by, or on behalf of, the applicant/consultant: *Delineation Application Package, July 2020.*

This information *is and is not* sufficient for purposes of this AJD.

Rationale: *The data sheets are not completed upon Corps approved data sheets. The Corps concurs with the delineation, after an exhaustive GIS search was conducted.*

\_\_\_ Data sheets prepared by the Corps: *Title(s) and/or date(s).*

Photographs: *Regulatory Viewer with Aerial Layer, October 2020.*

\_\_\_ Corps Site visit(s) conducted on: *Date(s).*

\_\_\_ Previous Jurisdictional Determinations (AJDs or PJDs): *ORM Number(s) and date(s).*

\_\_\_ Antecedent Precipitation Tool: *provide detailed discussion in Section III.B.*

USDA NRCS Soil Survey: *Websoil Survey site was not working. Used consultant's data.*

USFWS NWI maps: *Regulatory Viewer with NWI Layer, October 2020.*

USGS topographic maps: *Regulatory Viewer with Topographic Layer, October 2020.*

**Other data sources used to aid in this determination:**

Data Source (select)	Name and/or date and other relevant information
USGS Sources	Regulatory Viewer with NHD Layer, October 2020..
USDA Sources	N/A.
NOAA Sources	N/A.
USACE Sources	Regulatory Viewer with LIDAR Layer, October 2020.
State/Local/Tribal Sources	N/A.
Other Sources	US Drought Monitor, October 2020

**B. Typical year assessment(s):** The US Drought Monitor showed Webster County in a Severe Drought.

**C. Additional comments to support AJD:** All wetlands do not abut or are not adjacent to any WOTUS. They are isolated prairie potholes in the middle of agricultural fields. The data sheets used for this delineation are not Corps approved delineation sheets but through the use of GIS aerial mapping, the Regulatory Viewer, and other government mapping software, the Corps concurs with the delineation. There are a few aerial photographs attached that show examples of the excluded features. Further mapping can be found in ORM.

<sup>1</sup> Map(s)/Figure(s) are attached to the AJD provided to the requestor.

<sup>2</sup> If the navigable water is not subject to the ebb and flow of the tide or included on the District's list of Rivers and Harbors Act Section 10 navigable waters list, do NOT use this document to make the determination. The District must continue to follow the procedure outlined in 33 CFR part 329.14 to make a Rivers and Harbors Act Section 10 navigability determination.

<sup>3</sup> A stand-alone TNW determination is completed independently of a request for an AJD. A stand-alone TNW determination is conducted for a specific segment of river or stream or other type of waterbody, such as a lake, where independent upstream or downstream limits or lake borders are established. A stand-alone TNW determination should be completed following applicable guidance and should NOT be documented on the AJD form.

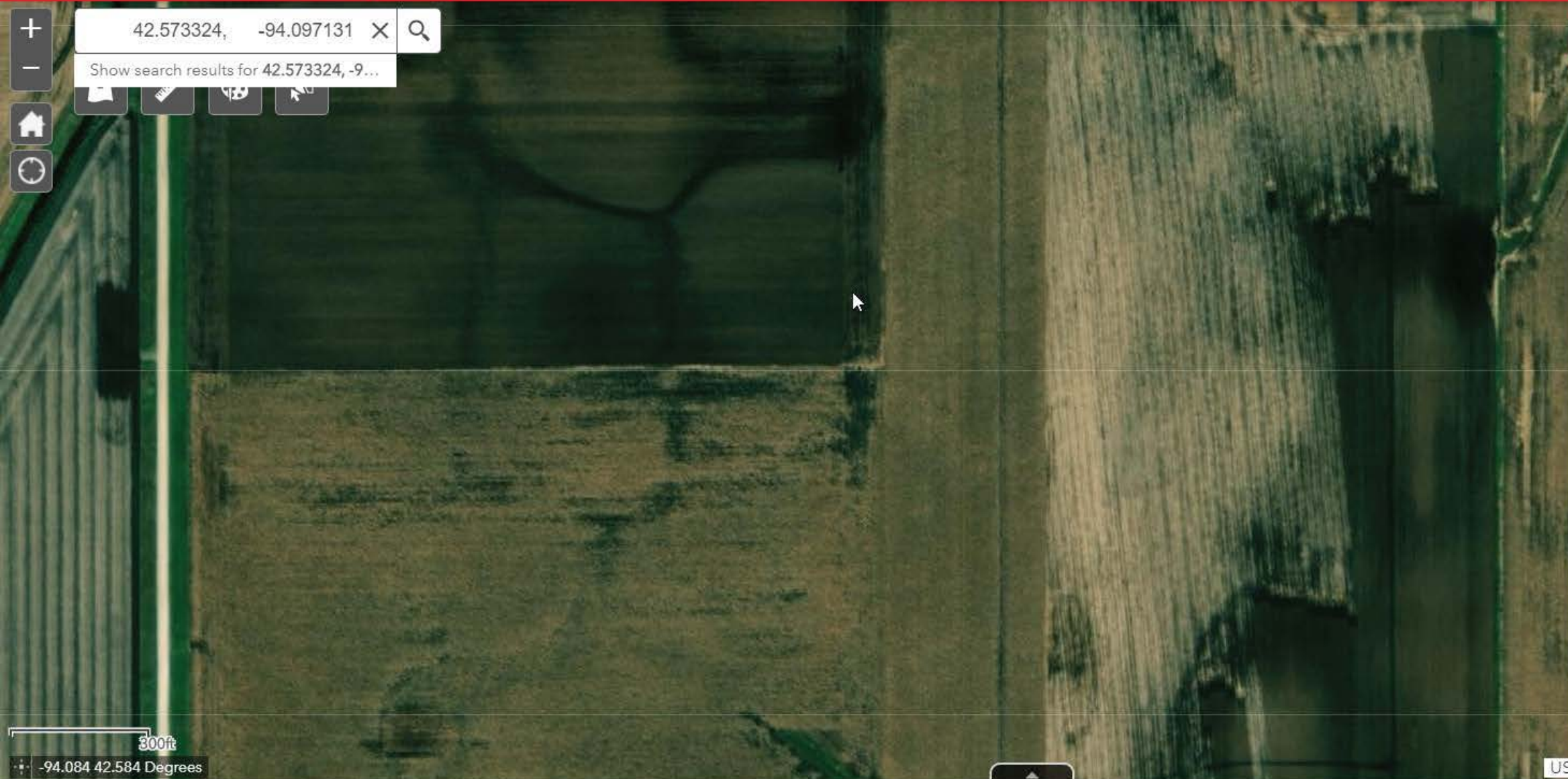
<sup>4</sup> Some excluded waters, such as (b)(2) and (b)(4), may not be specifically identified on the AJD form unless a requestor specifically asks a Corps district to do so. Corps Districts may, in case-by-case instances, choose to identify some or all of these waters within the review area.

<sup>5</sup> Because of the broad nature of the (b)(1) exclusion and in an effort to collect data on specific types of waters that would be covered by the (b)(1) exclusion, four sub-categories of (b)(1) exclusions were administratively created for the purposes of the AJD Form. These four sub-categories are not new exclusions, but are simply administrative distinctions and remain (b)(1) exclusions as defined by the NWPR.

# Rock Island District Regulatory Viewer

- Regulatory Viewer
- Regulatory Map
- Compliance Viewer
- IPaC
- I-Sites
- Mitigation Banking
- IL IAS

## Rock Island District Regulatory Viewer



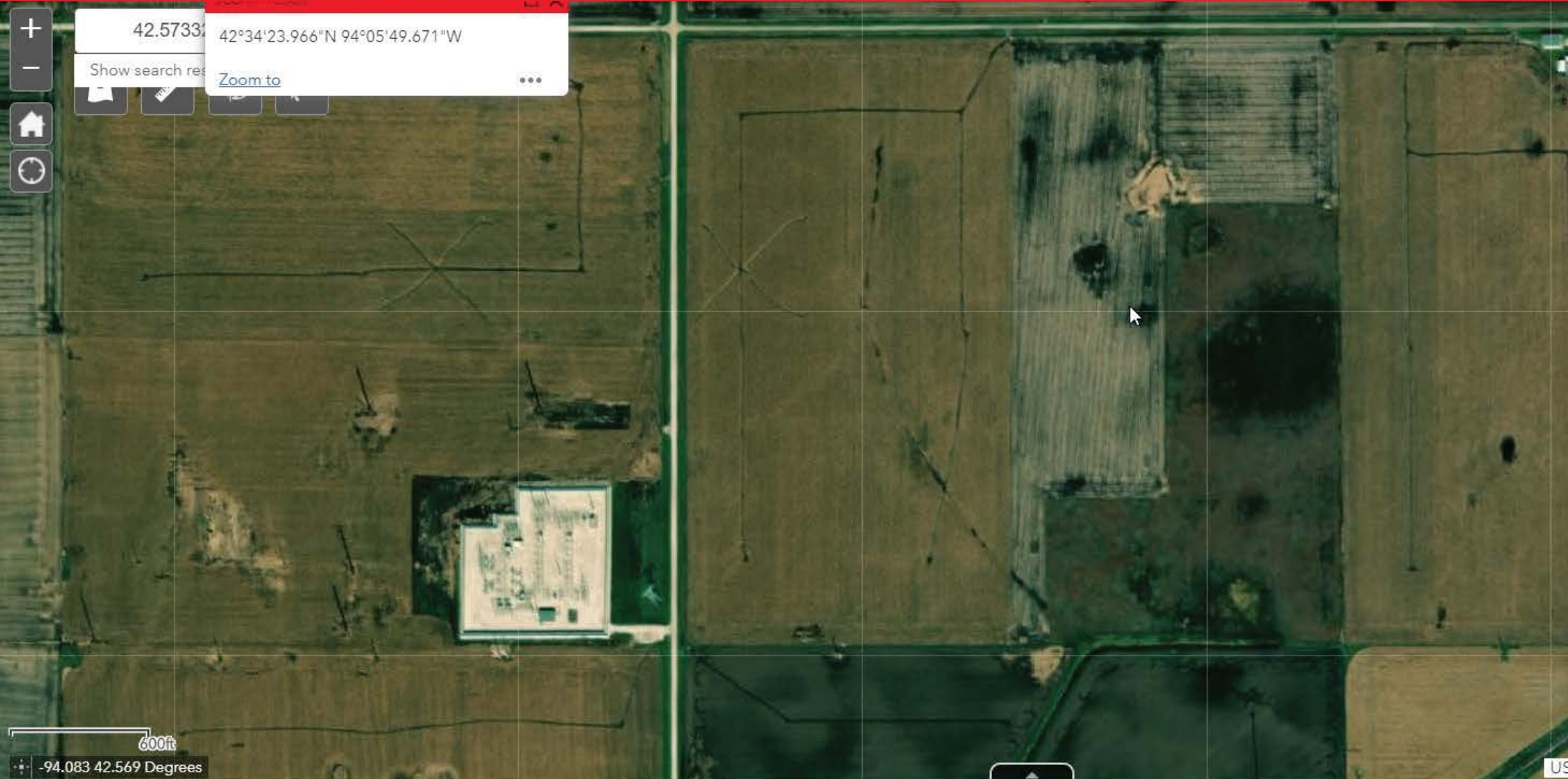
### Basemap Gallery

- Dark Gray Canvas
- Imagery
- Imagery with Labels
- Light Gray Canvas
- National Geographic
- Oceans
- OpenStreetMap
- Streets
- Terrain with Labels
- Topographic

# Rock Island District Regulatory Viewer

- Regulatory Viewer
- Regulatory Map
- Compliance Viewer
- IPaC
- I-Sites
- Mitigation Banking
- IL IAS

## Rock Island District Regulatory Viewer



### Basemap Gallery

- Dark Gray Canvas
- Imagery
- Imagery with Labels
- Light Gray Canvas
- National Geographic
- Oceans
- OpenStreetMap
- Streets
- Terrain with Labels
- Topographic